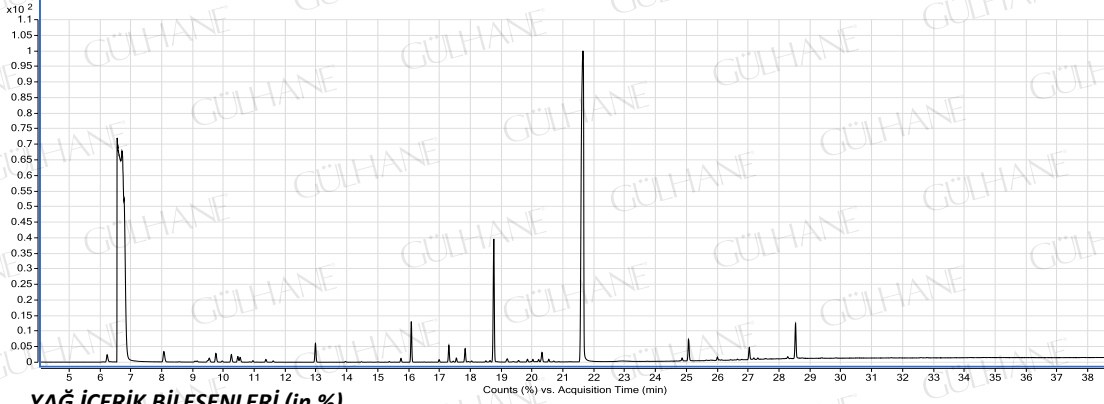


GÜLHANE®

Analiz Setifikası
ANASON YAĞI-ANISEED OIL
LOT NO: Y014_01/09



YAĞ İÇERİK BİLEŞENLERİ (in %)

| Bileşenler | % |
|---------------------|-------|
| alpha pinene | 1.07 |
| beta pinene | 0.08 |
| sabinene | 0.09 |
| beta myrcene | 0.36 |
| alpha phellandrene | 0.64 |
| dl-limonene | 0.61 |
| beta phellandrene | 0.41 |
| 1,8-cineole | 0.32 |
| gamma terpinene | 0.09 |
| paracymenene | 0.15 |
| alpha copaene | 0.17 |
| linalool | 2.49 |
| alpha bergamotene | 0.84 |
| terpinen 4-ol | 0.21 |
| trans caryophyllene | 0.71 |
| trans anethole | 7.3 |
| alpha terpineol | 0.23 |
| trans anethole | 0.51 |
| trans anethole | 78.27 |
| | 0.12 |
| p-anisaldehyde | 1.06 |
| anisyl acetone | 0.52 |
| foeniculin | 1.87 |

ANALİZİ YAPAN :
KİMYAĞER OZJAN KARAGÖZ