



## **Ezcad3 software installation instruction manual**

**(Unofficial manual, for reference only)**

Website: [www.bjjcz.com](http://www.bjjcz.com)

Sales Email: [market@bjjcz.com](mailto:market@bjjcz.com)

After-sales Email: [support@bjjcz.com](mailto:support@bjjcz.com)

Tel: 010-64426993/64426995/64873071

Fax: 010-64426995

Zip code: 100015

Address: 1st Floor, M3 Building, No.1 Jiuxianqiao East Road, Chaoyang District, Beijing

## 目录

I	Software Introduction.....	1
II	Software Installation.....	1
	1. Driver Installation.....	1
	2. Environmental installation.....	4
	3. Ezcad3 license activation.....	4
	3.1 Online activation.....	5
	3.2 Offline activation.....	7
	4.Ezcad3 installation.....	10
III	Common problems and solutions.....	11
	1. driver problem.....	11
	2. license problem.....	11
	3. environment problem.....	11

# I Software Introduction

The software has the following main functions:

Freely design the graphic pattern to be processed

Support for TrueType fonts, single line fonts (JSF), dot matrix fonts (DMF), 1D barcodes and Two-dimensional barcodes such as DataMatrix

Flexible variable text processing, changing text in real time during processing, and directly reading and writing texts dynamically

Powerful node editing and graphical editing for curve welding, cut and intersection operations

Supports up to 256 pens and can set different processing parameters for different objects

Compatible with common image formats (bmp, jpg, gif, tga, png, tif, etc.)

Compatible with commonly used vector graphics (ai, dxf, dst, plt, etc.) Ability to import 3D models in stl, dxf format

Commonly used image processing functions (grayscale conversion, black and white map conversion, dot processing, etc.), can be performed

Grayscale image processing

Powerful padding to support multiple fill types

A variety of control objects, users can freely control the system to interact with external devices

Projection marking of the top view for 3D model files

Layered marking for 3D models

## II Software Installation

### 1. Driver Installation

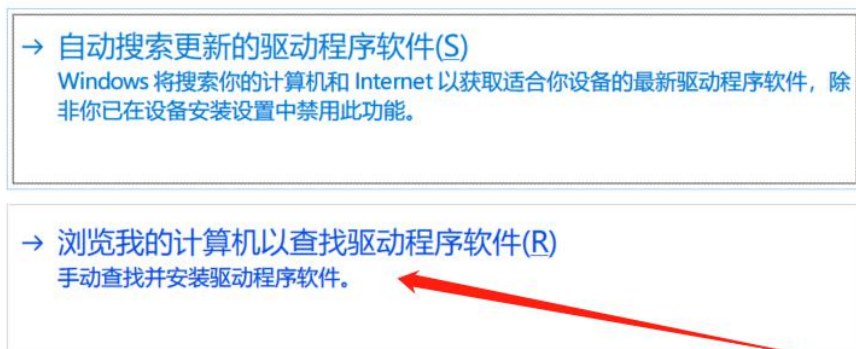
(1) .Connect DLC board with computer, then open the device manager of computer, as shown below and right click this board device to update driver.



(2) .click Browse my computer for driver software to install driver

← 更新驱动程序 - Laser Mark Control Board : DLC Version 1

你要如何搜索驱动程序?



(3) All the file include Ezcad3 and driver file and operating environment is in the CD,just copy them to PC,then select the right position of driver file,then click next ,then driver installation completed

←  更新驱动程序 - Laser Mark Control Board : DLC Version 1

## 浏览计算机上的驱动程序

在以下位置搜索驱动程序:

浏览(R)...

包括子文件夹(I)

→ 让我从计算机上的可用驱动程序列表中选择(L)

此列表将显示与该设备兼容的可用驱动程序，以及与该设备属于同一类别的所有驱动程序。

下一步(N)

取消

←  更新驱动程序 - Laser Mark Control Board : DLC Version 1

## Windows 已成功更新你的驱动程序

Windows 已安装完此设备的驱动程序:

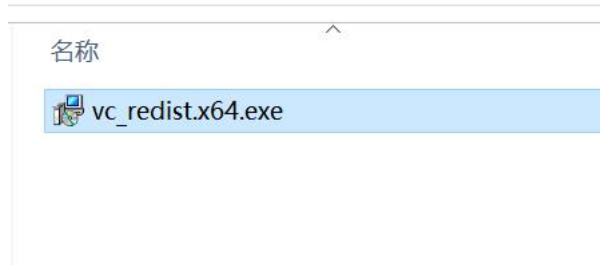


Laser Mark Control Board : DLC Version 1

关闭(C)

## 2. Environmental installation

Double click this exe file to install it.(if your PC has installed it,please skip this step)



## 3. Ezcad3 license activation

This step is very important,pls read it carefully!!!!!!!!!!!!!!!

Before plug in the red dongle(it looks like a U disk and there is a black sticker which has the 16 digits license number on it) on your PC,please make sure that there are no storage devices such as USB flash drives on the computer, except the computer hard drive.

Our red dongle could be activated for 5 times,but if you don't use the red dongle,then it could be only activated for 1 time,please pay attention to that.

We have two activation methods, customers can choose according to their own network conditions, divided into online activation (for working computers with network) and offline activation (for working computers without network)

### 3.1 Online activation

(1) Plug in the red dongle, then open the license manager, it is in the Ezcad3 folder. then click Activate

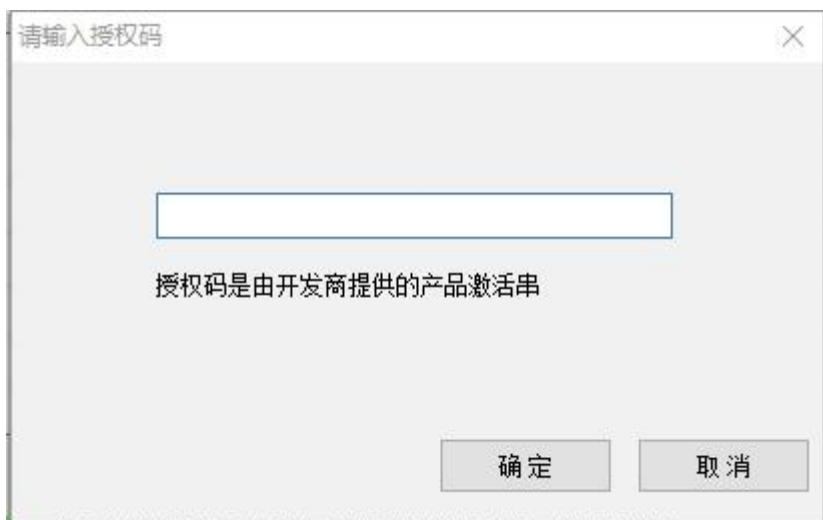
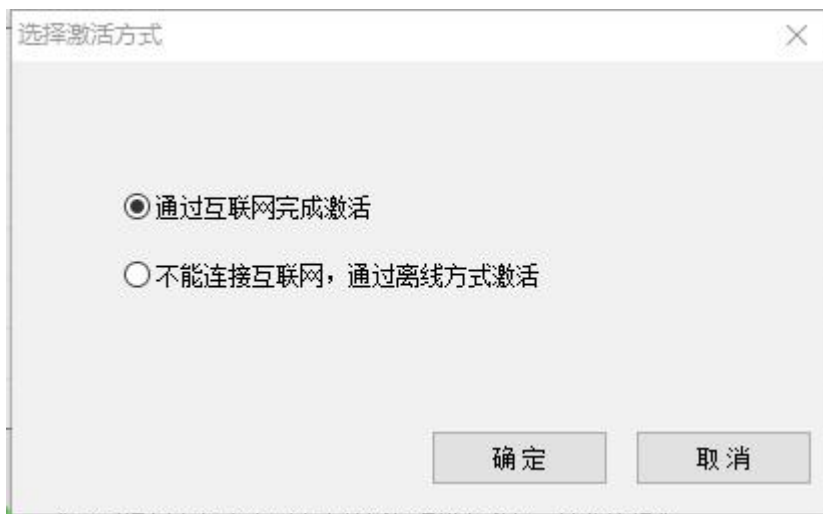
名称	修改日期	类型	大小
CORFILE	2019/9/6 19:01	文件夹	
LANG	2019/9/6 19:01	文件夹	
PARAM	2019/9/6 19:20	文件夹	
RES	2019/9/6 19:01	文件夹	
AUTOSAVE.ez3	2019/9/6 16:56	EZ3 文件	842 KB
CH365DLL64.dll	2015/6/15 17:29	应用程序扩展	25 KB
DfjzhControlerDll64.dll	2016/8/12 18:27	应用程序扩展	871 KB
dlc.dll	2019/9/5 18:12	应用程序扩展	411 KB
endpoint.dll	2019/4/26 9:16	应用程序扩展	223 KB
ezcad3.exe	2019/9/6 13:57	应用程序	1,548 KB
Ezcad3Kernel.dll	2019/9/6 13:57	应用程序扩展	6,356 KB
Ezcad3Motion.dll	2017/12/4 20:16	应用程序扩展	31 KB
LicenseManager_x64.exe	2018/10/10 15:58	应用程序	1,422 KB
OpenIssue.exe	2018/6/21 20:04	应用程序	99 KB
WrapAlgorithm.dll		应用程序扩展	888 KB

文件说明: 比特授权管理工具  
文件版本: 6.4.0.8632  
创建日期: 2019/9/6 19:01  
大小: 1.38 MB



(4).As shown below,we could see two way to activate license,the first way is

Complete activation via the internet, it is easy, just enter the license number and click OK.



授权管理工具 ×

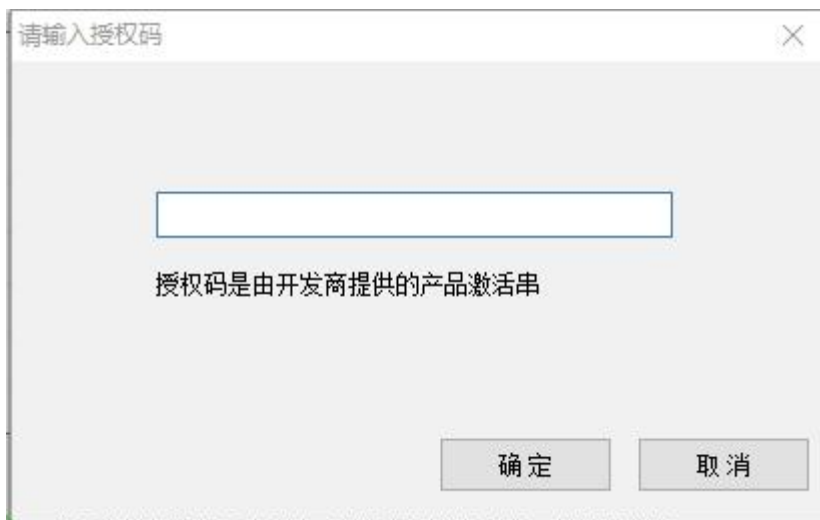
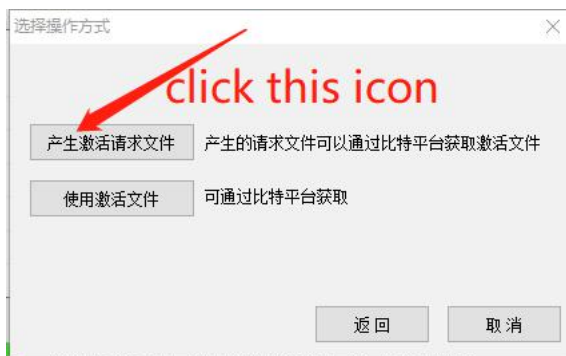
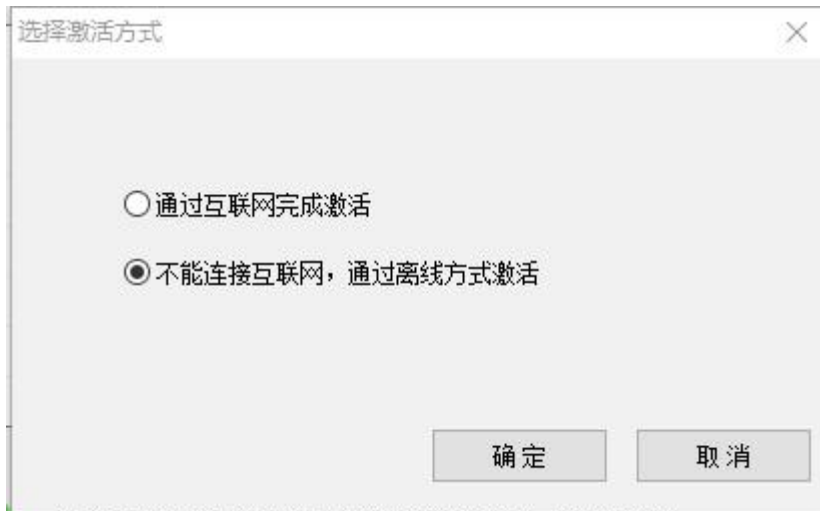
授权码激活操作成功





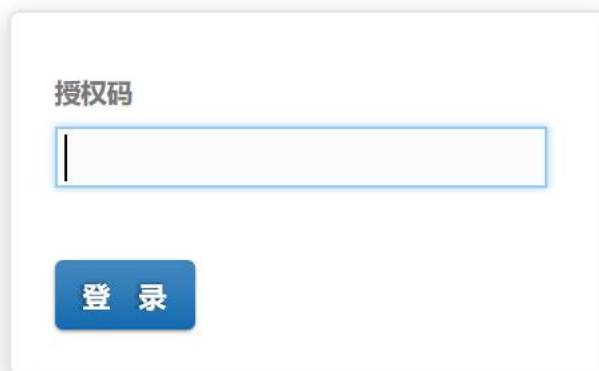
### 3.2 Offline activation

(1)When working computer without network,customer need to select the second way to activate license.Click license manager and click Activate and select Can't connect to the internet, activate offline

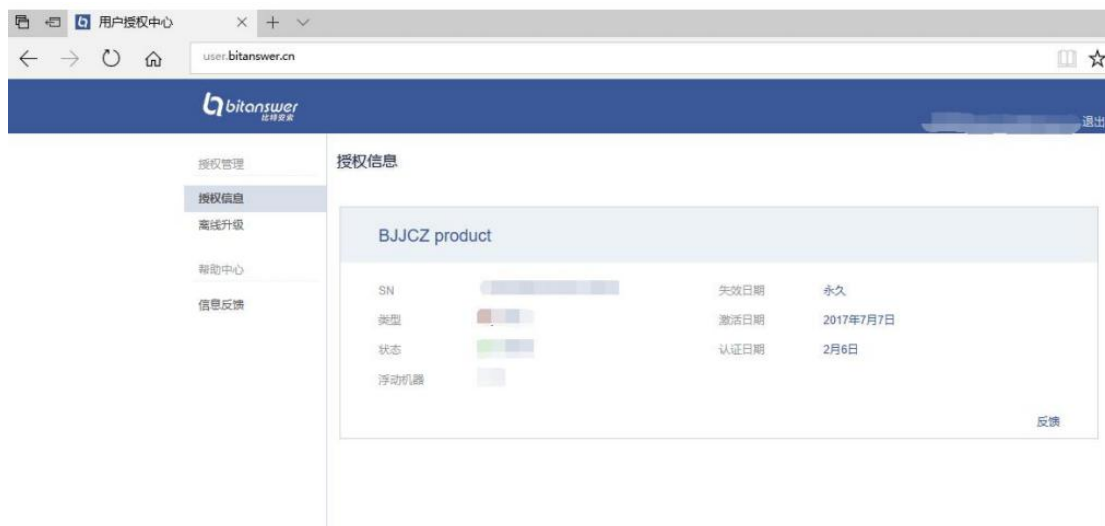


.After enter the license number,PC will generate a **.req file**,save it to PC.Enter the URL to enter this site.http://user.bitanswer.cn/logon  
(2) In this website,enter the license number,then click log in.

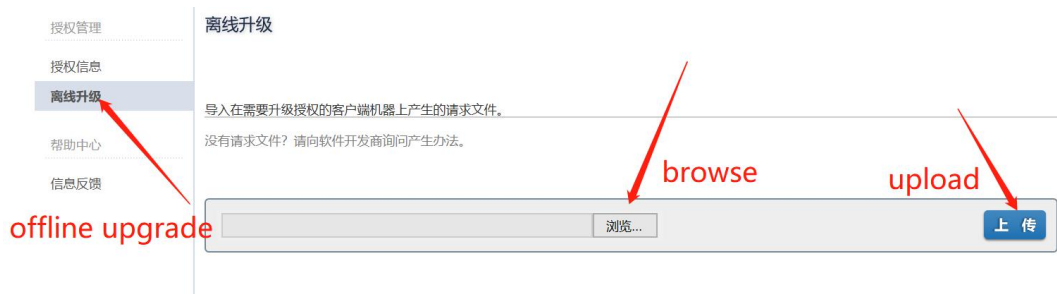
## 用户登录



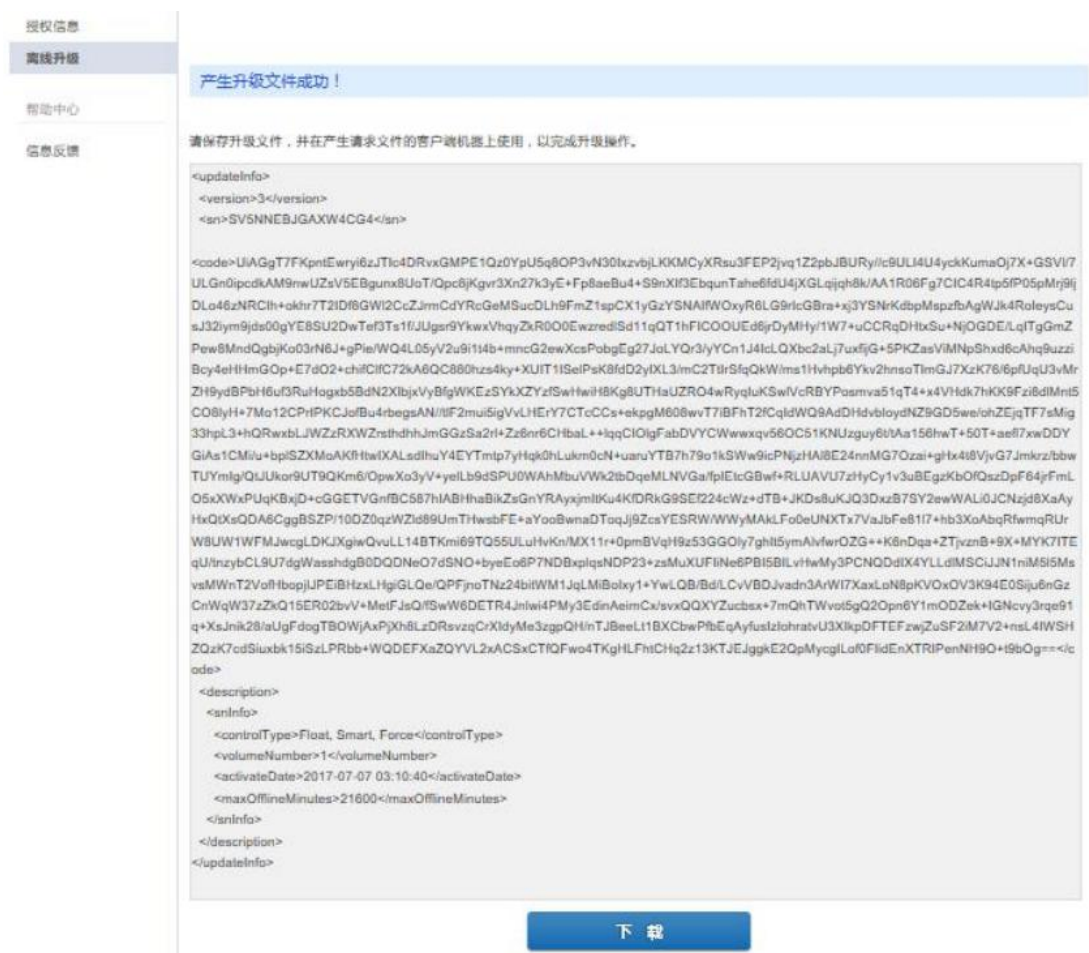
A login form titled "用户登录" (User Login). It features a text input field labeled "授权码" (Authorization Code) and a blue button labeled "登录" (Login).



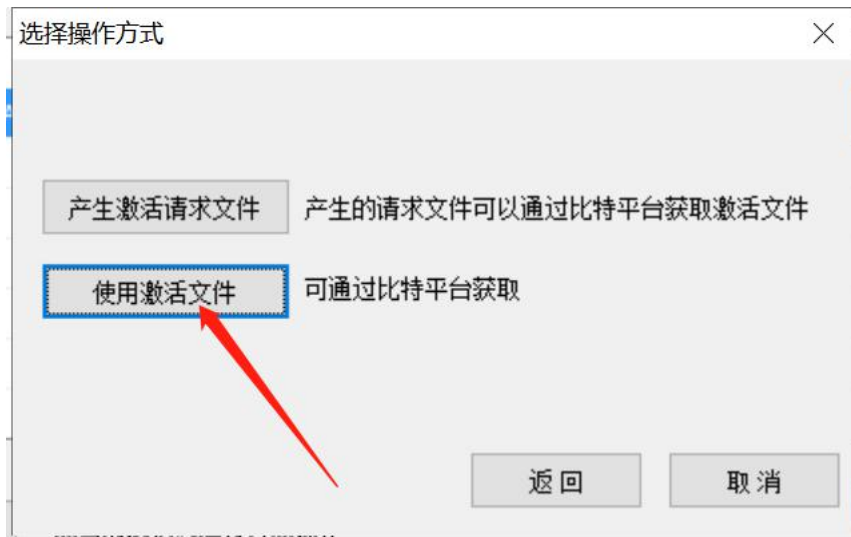
(3) .Click offline upgrade,then you could see as shown below.Then click Browse to select the **.req file** you just created, then upload it



(4) After upload the .req file, you could see as shown below, then click Download, and a .upd file will be generated and you need to save it. Copy the file to the computer you need to activate.



(5) In the computer you need to activate, open this interface (If you forgot how to open this interface, please refer to offline activation step one) and click Upload activation file, open the .upd file you just created. Then system will prompt to upgrade successfully.



(6) In this interface you can view the license status.



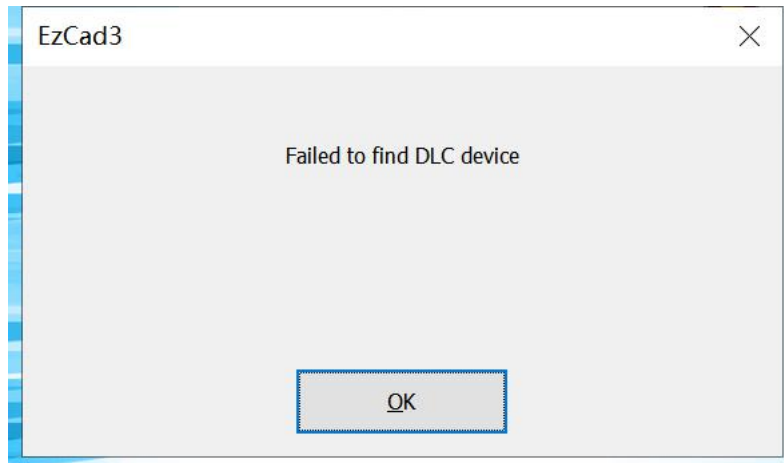
## 4.Ezcad3 installation

Just copy the Ezcad3 software from CD to the PC.

## III Common problems and solutions

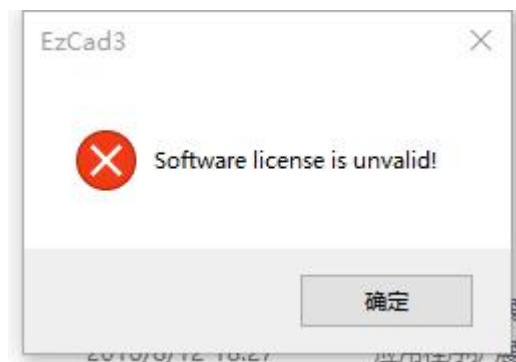
### 1. driver problem

When system prompts this popup,please check if you install the driver successfully,and if you firmly connect board with PC.



### 2. license problem

When system prompts this popup,please check the license status,check if you activate the license successfully.



### 3. environment problem

When system prompts this popup,this is because you don't install the environment,please try to install the operating environment again.

