

FLOWZONE[®]
CONCRETE +

OPERATION GUIDE

Model #: FZVACF-2.5

MONSOON 2.5™

5-POSITION VARIABLE PRESSURE
BATTERY POWERED ROLLING SPRAYER

9-GALLON TANK CAPACITY





ATTENTION

Please read the following information carefully. User must read and understand the entire manual before operating the sprayer. Failure to follow instructions or improper use could lead to sprayer failure and possible serious injuries.

- Never spray flammable, caustic, acidic, heat, pressure, or gas producing chemicals.
- Always read and follow chemical manufacturer's instructions before use with this sprayer as some chemicals may be hazardous when used with this sprayer.
- Never leave chemicals or solutions sitting in your sprayer after using.
- After using sprayer with chemicals, it is important to spray with fresh water for 3-5 minutes to ensure residual chemicals in the gun, wand, tank, pump, and hose are cleaned out.
- Read and follow all instructions and cautions on label of products used in this sprayer.
- Do not store your sprayer in extremely high temperatures. Heat can lead to the build-up of pressure within the sprayer, resulting in a possible explosion.
- Do not try to make modifications to the sprayer. Always use FlowZone[®] branded replacement parts from the manufacturer.
- Do not use batteries that are wet or have been damaged.
- Inspect sprayer hose, power knob, wand, and gun for damage or loose connections before each use.
- Do not lift or carry the sprayer by the hose, or wand. Carry by the handle only.
- Only spray when the air is calm (no wind or air movement) to prevent chemical spray from drifting into unintended areas.
- Keep sprayer and all chemicals out of the reach of children.
- Remove chemicals and thoroughly clean the sprayer after each

use. Failure to clean the sprayer may cause contamination of subsequent applications, will cause premature spray wear, and void the sprayer warranty.

NOTES

- The sprayer may have residual water in it when first opened. This is due to quality testing every sprayer undergoes before leaving our factory.
- Some parts may be located under the tank lid when first assembling the sprayer.
- **THIS SPRAYER IS DESIGNED TO OPERATE WITH ONLY FLOWZONE[®] BRANDED BATTERIES. ANY OTHER BATTERIES COULD CAUSE SERIOUS HARM OR INJURY TO THE OPERATOR AND SERIOUS DAMAGE TO THE SPRAYER.**

This product contains chemicals, including lead, known to the state of California to cause birth defects and other reproductive harm.



When using chemicals, always wear protective clothing, including respiratory protection masks, gloves, eye protection, etc.



Do not dispose of Lithium-ion batteries with household waste; recycle where facilities exist.

OPERATING

- Do not allow familiarity with products to make you careless. Remember that a single moment of carelessness is sufficient to cause serious injury.
- Always wear eye protection with side shields when handling or operating this sprayer. Failure to do so could result in serious injury from chemical contact or flying dirt or debris.
- The Lithium-ion battery pack can be used in temperatures down to 32°F. When operating in cold temperatures, put the battery pack in the battery compartment and use the sprayer in a light duty application. After about a minute the battery pack will warm up and begin operating normally.
- Always use the correct power setting for your application. Using the correct PSI and flow rate will result in a safer and more thorough treatment. For calibration resources please contact FlowZone® technical support. (Note: Always refer to local, state, and federal laws and regulations regarding your application.)

- Do not use the sprayer if the power switch is not functioning correctly. Any power tool that cannot be controlled with the switch is dangerous and must be repaired.
- Remove battery before making any adjustments, changing accessories, or storing the sprayer. Disconnect the sprayer from the power source by removing the battery pack. These preventative safety measures reduce the risk of starting the sprayer accidentally.

STORING

- Store sprayer out of reach of children and do not allow persons unfamiliar with the power tool or these instructions to operate the sprayer. Power tools are dangerous in the hands of untrained users.
- Maintain sprayers and accessories. Check for misalignment or binding of moving parts, breakage of parts and any other condition that may affect the sprayers operation.

SAFETY

- Use the sprayer and accessories in accordance with these instructions, taking into consideration the working conditions and the work to be performed. Use of this sprayer for applications that it was not intended for could result in a hazardous situation.
- Keep handles and lift points dry, clean and free from oil and grease. Slippery handles and lift points do not allow for safe handling and control of the sprayer.
- Risk of fire or explosion: Never use this sprayer with liquids such as gasoline, ethanol, methanol, or any other flammable or gas producing chemicals. Do not use sprayer around sparks, flame, or smoke. Failure to adhere to these instructions may cause ignition, resulting in potential injury and damage to property.
- To reduce the risk of fire, personal injury, and product damage from a short circuit, never immerse the sprayer, battery, or charger in fluids. Do not place or store sprayer where it could fall or be pulled into a tub or sink. Corrosive or conductive fluids, such as seawater, certain industrial chemicals, and bleach or bleach containing products, etc., can cause a short circuit.
- Electric shock hazard: Never spray toward electrical outlets.
- Spray area must be well ventilated to avoid hazardous fume build-up. Always refer to the product label of the chemical being used for safety instructions and proper use practices.
- Avoid spraying on windy days. Spraying in windy conditions could cause chemicals to be blown onto persons, plants, or objects that are not intended to be sprayed.

DO NOT RETURN SPRAYER TO STORE, if you experience problems or have questions contact our Customer Support, M-F 9am-5pm EST at **+1 803-339-2500**, or email: support@wessol.com, or find more information at fzspray.com/troubleshoot.

SAFETY CONT.

- Do not store chemicals in the tank. Chemicals can degrade seals and hoses. Drain and clean sprayer after each use. Failure to do so may void the sprayer warranty.
- Remove gloves before handling battery pack. Chemicals may be damaging to plastics.
- Thoroughly inspect the interior, exterior, and all components of the sprayer before each use. Check for cracked and deteriorated hoses, leaks, clogged nozzles and missing or damaged parts. If damaged, ensure the sprayer is repaired before use. Many accidents are caused by poor maintenance.
- Always remove the battery pack from the sprayer before performing any maintenance, storing or draining of the sprayer.
- Do not eat or smoke while handling or operating the sprayer. Refer to the product label of the chemical being used for user safety practices.
- Do not use the battery compartment for storage.
- Always use common sense and be cautious when using the sprayer. It is not possible to anticipate every situation that could result in a dangerous outcome. Do not use this sprayer if you do not understand these operating instructions or if you feel the work is beyond your capability.
- Maintain labels and nameplates. These carry important information. If unreadable or missing, contact FlowZone® Support.

**Manuals are subject to updates.
Scan the QR code to view the
most updated manual online!**



or visit: www.fzspray.com/operation-guides

REGISTER YOUR SPRAYER!

To take advantage of the 1-year Limited Warranty from WESSOL, LLC. Register your sprayer at the website below:

www.fzspray.com/register

Please read and follow this manual carefully to ensure that you get the most out of your new sprayer. If you need assistance with the assembly or operation of your sprayer, please don't hesitate to contact WESSOL via the support methods below:

www.fzspray.com

spraysquad@fzspray.com

+1 803-339-2500

TABLE OF CONTENTS

ABOUT		page 6-7
1.1	specifications.....	page 6
1.2	what's in the box.....	page 7
SET UP		page 8-12
2.1	assembly.....	page 8
2.2	spraying.....	page 10
2.3	aftercare.....	page 12
MAINTENANCE		page 13-15
3.1	parts and accessories.....	page 13
3.2	troubleshooting.....	page 15
WARRANTY		page 16
4.1	warranty policy.....	page 16



THE POWER OF YOUR SPRAYER

Harness the convenience of the GHT quick-connect hose by switching between spraying chemicals and delivering water to tools such as cut saws and core drills. Easily comply with OSHA Table 1 regulations with FlowZone® Concrete+!

Easily switch from delivering water through tools to spraying chemicals such as curing compounds, form release, cleaning chemicals, pesticides and more. Powered by a 18V lithium-ion battery, this sprayer results in 2-3x more efficiency than a manual sprayer. Plus operate continuously for up to 3 hours and spray more than 76 gallons per battery charge at a distance of 30 feet.

CONCRETE+ MONSOON 2.5 SPECIFICATIONS			
Model Number	FZVACF-2.5	Pump Type	Heavy Duty Diaphragm Pump
Battery Type	Lithium-ion	Spray Time	Up to 3 hours
Battery Voltage	18V	Pressure	Up to 115 psi
Battery Capacity	5.2Ah	Spray Distance	>30 feet (10 meters)
Battery Charging Time	1.5 hours	Tank Capacity	9 gallons
Battery Cycle Life	1,000 cycles	Flow Rate	0.250 gal/min to .634 gal/min
Battery Charger	21V/2.5A	Pump Life	1,000 hours



WHAT'S INSIDE

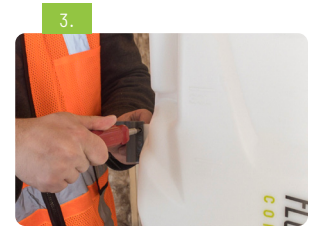
For part numbers and replacement parts please see page 14.

Part	Name	Part	Name	Part	Name
1	Tank Lid	7	Stainless-Steel Spray Wand	13	0° Pin Stream Nozzle
2	9-Gallon Tank	8	20-Ft. GHT-GHT Hose	14	25° Fan Nozzle
3	Tank Strainer	9	Spray Gun	15	Wheels & Cotter Pins
4	Top & Bottom Holster	10	18V/5.2Ah Battery Pack	16	Handle with Storage
5	Nuts & Bolts	11	21V/2.5A Charger		
6	Hose Storage Brackets	12	Adjustable Cone Nozzle		

ASSEMBLY

PART A: ASSEMBLING YOUR NEW SPRAYER

1. Remove the nuts and bolts, holsters (4), and nozzles (12, 13, 14) from the tank strainer (3). Set aside.
2. Place a wheel (15) on the axel connected to the tank. Slide a cotter pin through the hole in the axel. Gently pry the cotter pin open to secure the wheel on to the axel. Repeat for the other wheel.
3. Next, place the top wand holster at the protruding holster mount on the sprayer tank. While holding the holster in place, insert a nut on one side of the hexagonal slot and screw the bolt through the other side using a Philip's head screwdriver until the bolt fastens into the nut. Repeat for the bottom holster/slot.
4. Stand the sprayer upright and loosen the knobs (without removing them completely) on both sides where the handle (16) will be inserted.



ASSEMBLY CONT.

PART A: ASSEMBLING YOUR NEW SPRAYER

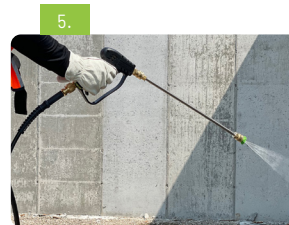
5. Insert the sprayer handle into the slots and adjust to your desired height. It may be easier to slide the knobs onto the handle while you are positioning it. Secure the handle by tightening the knobs back onto the threads on the spray tank.
6. Place a hose storage bracket (6) on the back of the spray tank. Attach the bracket to the tank using a phillips-head screwdriver and the bolts. Repeat for the other bracket.
7. Connect the male end of the hose (8) with the female end of the jumper hose attached to the sprayer tank. Pull back the collar on the female GHT fitting, insert the hose, and release the fitting.
8. Attach the spray gun (8) to the female end of the hose using the same method.
9. If spraying with the stainless-steel spray wand (7), pull back on the collar of the quick-connect fitting on the spray gun and insert the male wand quick-connect. Push the collar back into its original position. Nozzles can be placed on the spray wand using the same process.
9. Wrap the hose around the storage brackets, snap the spray wand into the wand holster and place any unused nozzles into the storage slots until ready to spray.



SPRAYING

PART B: PREPARING TO SPRAY

1. Although the battery may be partially charged upon delivery, it is essential to fully charge the battery (10) prior to the first operation. The charge level can be viewed by activating the indicator lights on the battery by pressing on the battery icon. The indicator lights should flash while the battery is plugged in and charging.
2. In a separate container, prepare the solution you want to spray according to the chemical manufacturer's instructions. Remove the tank lid and carefully pour the solution through the tank strainer. Securely tighten the tank lid.
3. Determine the nozzle you would like to use and insert it into the spray gun or spray wand.
4. Turn the pump on by rotating the variable-pressure dial clockwise to the desired position.
5. To begin spraying, simply hold down the trigger on the spray gun. Always make sure to wear proper PPE when spraying chemicals through the sprayer.



BATTERY CARE

CHARGING AND STORING YOUR BATTERY



Please read the following information carefully. User must read and understand entire manual before operating this sprayer. Improper use or failure to follow instructions could lead to sprayer failure and possible serious injuries.

These batteries have been designed to provide maximum trouble-free life. However, like all batteries, they will eventually wear out. Do not disassemble battery pack and attempt to replace the batteries. Handling of these batteries especially when wearing rings or jewelry could result in serious burns.

- Recharge only with the charger specified by the manufacturer. A charger that is suitable for one type of battery pack may create a risk of fire when used with another battery pack.
- Only use the battery pack specifically designated for the particular sprayer being used. Use of any other battery packs may create a risk of injury and fire.
- When battery pack is not in use, keep it away from other metal objects like paper clips, coins, keys, nails, screws or other small metal objects that can make a connection from one terminal to another. Shorting the battery terminals together may cause burns or fires.
- If the battery is damaged, liquid can be ejected from the battery; avoid contact. **If contact accidentally occurs, flush with water. If liquid contacts eyes, immediately seek medical help.**
- Liquid ejected from the battery may cause irritation or burns.
- Do not use a battery pack or sprayer that is damaged or modified. Damaged or modified batteries may exhibit unpredictable behavior resulting in fire, explosion or risk of injury.
- Do not expose a battery pack or sprayer to fire or excessive temperature. Exposure to fire or temperature above 265°F (130°C) may cause explosion.
- Follow all charging instructions and do not charge the battery pack outside the temperature range specified in the instructions. Charging improperly or in a temperature outside the specified range may damage the battery and increase the risk of fire.



If after 2 hours during the charging process, none of the LEDs are lit, remove the battery pack from the charger to avoid damaging the product. DO NOT insert another battery. Contact Technical Support, email support@wessol.com or call +1 803.339.2500

STORING BATTERY PACK LONGER THAN 30 DAYS

- Store the battery pack where the temperature is below 80°F and away from moisture.
- Store the battery pack in a 30%-50% charged condition.
- For long-term storage, regular charging of the battery is required to maximize battery life. Check the battery level using the indicator lights every 4 weeks. Recharge the battery if it falls below 3 bars. Do not allow the battery to fully discharge.

BATTERY RECYCLING PREPARATION

- To preserve natural resources, please recycle or dispose of the batteries properly.
- This product contains Lithium-ion batteries. Local, state or federal laws may prohibit disposal of lithium-ion batteries in ordinary trash. Consult your local waste authority for information regarding available recycling and/or disposal options.

LITHIUM-ION BATTERY PACKS

- Lithium-ion batteries deliver fade free power for their entire run time. Lithium-ion batteries will not gradually lose power due to decreasing battery charge. Instead, power from the battery pack will drop from full to zero once the full charge has been drained from the battery. Once this happens, recharging of the battery is required. It is not necessary to drain the battery pack completely before recharging.

BATTERY PACK PROTECTION FEATURES

- Lithium-ion battery packs are designed with features that protect the lithium-ion cells and maximize battery life. If the sprayer stops during use, release the trigger to reset and resume operation. If the sprayer still doesn't work, the battery needs to be recharged.

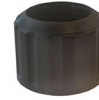
AFTERCARE

PART C: MAINTAINING YOUR SPRAYER

1. Safely dispose of any extra product according to the chemical manufacturer's instructions. Rinse out any residual solution in the spray tank with warm, soapy water.
2. Spray fresh water through the sprayer for 3 to 5 minutes to clear the tank and internal components of chemicals.
3. Disconnect the spray gun from the hose and allow the hose to hang down towards the ground; draining the hose of excess liquid.
4. Thoroughly dry the sprayer tank with a clean cloth and clear the nozzles and internal inlet filter of any buildup.
5. Store the sprayer in a dry, clean, and shaded place to protect it from extreme heat or frost. Never leave your sprayer exposed in the back of a vehicle.

NOTE: For long-term storage, regular charging of the battery is required to maximize battery life. Check the battery level using the indicator lights every 4 weeks. Recharge the battery if it falls below 3 bars. Do not allow the battery to fully discharge.



**FZRACP****FZRACS****FZRABW****FZAAEM****FZAAEL****FZRAHP****FZRACU****FZRAGM****FZRACN****FZRAES****FZRAFF****FZRAFJ****FZRADF****FZRAAS****FZRADJ****FZRADE**

ACCESSORIES & REPLACEMENT PARTS

All parts and accessories can be purchased online at www.fzspray.com.

Part	Name	Part	Name	Part	Name
FZRACP	20-Ft. GHT-GHT Hose	FZRACU	Tank Lid	FZRADF	Hose Storage Brackets
FZRACS	Top & Bottom Holster	FZRAGK	Pump Inlet Filter	FZRAAS	Stainless-steel Spray Wand
FZRABW	Tank Strainer	FZRACN	Quick-Connect Spray Gun	FZRADJ	Rolling Sprayer Wheels
FZAAEM	18V/5.2Ah Battery Pack	FZRAES	High/Variable-Pressure Pump & Circuit Board Assembly	FZRADE	Sprayer Handle with Storage
FZAAEL	21V/2.5A Charger	FZRAFF	Diaphragm Pump		
FZRAHP	Drain Plug	FZRAFJ	Circuit Board		



FZAAAR



FZAAAP



FZAAAQ

Part	Name	Part	Name	Part	Name
FZAAAR	Adjustable Cone Nozzle				
FZAAAP	Quick-Connect 0° Jet Nozzle				
FZAAAQ	Quick-Connect 25° Fan Nozzle				

TROUBLESHOOTING

COMMON SOLUTIONS

If your sprayer is experiencing trouble, see below or visit fzspray.com/troubleshoot for detailed instructions/videos on how to determine which part is not functioning.

To contact Technical Support, email support@wessol.com or call **+1 803.339.2500**

PROBLEM	POSSIBLE REASON(S)	SOLUTION
Sprayer is not turning on and there is no sound coming from the sprayer	Dead battery	Charge the battery. If the battery will not charge, test the charger or call Support at +1 803.339.2500 for a replacement if applicable.
	Loose/worn connections on power switch	Remove back cover plate. Using pliers, move all three wires on the power switch over to the neighboring side, to the extra set of wire contacts.
	Defective micro-switch	Purchase replacement part or contact Support for help.
	Defective circuit board	Purchase replacement part or contact Support for help.
Leaks from gun/nozzle area	Loose connection	Ensure spray gun is fully tightened onto threaded end of the hose.
	Missing or worn gasket	Contact Support or go to fzspray.com to purchase replacement gaskets.
Clogged pump / hose / gun / wand / nozzle.	Not rinsing tank / pump / hose / gun / nozzle(s) with water after use.	Rinse sprayer thoroughly with warm, soapy water after each use.
Dead battery	Defective charger	If the LED indicator lights do not turn on or only one red LED is on after being on charger for over 2 hours, test the charger using a multimeter. Replace if necessary.
	Damaged lithium cells	If the battery receives no reading from a multimeter, a replacement battery is needed.
Pump makes a sound when sprayer is on and output is	Clog in filter or nozzle	Check filter or nozzles for clog. Using warm water, thoroughly clean the components.
	Clog in pump	Open the pump and clean. Contact Support for assistance.
Leak from sprayer tank	Loose hose-pump connection	Open cover plate and identify the hose clamps. Use a flathead screwdriver to tighten.
	Damage on pump	Replace the pump.
	Damage on tank	Replace the sprayer tank.

WARRANTY COVERAGE

WESSOL, LLC warrants to the original purchaser that the FlowZone® Concrete+ product will function as intended under normal use and consistent maintenance, subject to the limitations and exclusions detailed below. At the discretion of WESSOL, LLC, we will repair or replace any parts found to be defective in material or workmanship without charge, apart from shipping and handling costs, during the covered warranty period.

WARRANTY PERIOD

The warranty period will begin from the date of retail purchase and exist for one (1) year, regardless of when the unit is placed in service. The warranty period is not extended if we opt to repair or replace the product in question.

WARRANTY CLAIMS

WESSOL, LLC reserves the right to require the return of the defective product, proof of purchase, and established product registration to file a claim under this warranty.

If the product fails to function as intended **DO NOT RETURN IT TO THE STORE**, call our customer support hotline at +1803.339.2500, email warranty@wessol.com or submit a contact form at fzspray.com/warranty.

PRODUCT REGISTRATION

All sprayers purchased from FlowZone® or an authorized distributor must be registered online to validate the warranty and allow for warranty claim processing. Go to fzspray.com/register to register your sprayer.

EXCLUSIONS AND LIMITATIONS

WESSOL, LLC only warrants products purchased from authorized distributors. Products purchased from unauthorized resellers or distributors are not subject to warranty services. The limited warranty does not cover damages, loss, or injury resulting from transportation, storage, accident, improper use, neglect, modifications, normal wear, or operation not in accordance with the instruction manual.

WESSOL, LLC reserves the right to change the design or specifications of any product without obligation to modify previously produced units.

ANY IMPLIED WARRANTIES, INCLUDING THE IMPLIED WARRANTY OF MERCHANTABILITY AND FITNESS FOR CONSUMER USE, ARE LIMITED TO THE DURATION SPECIFIED ABOVE. WESSOL, LLC'S LIABILITY IS LIMITED SOLELY TO THE REPAIR OR REPLACEMENT OF THE NON-FUNCTIONING PRODUCT OR PART. WESSOL, LLC EXCLUDES LIABILITY UNDER THIS WARRANTY FOR ANY AND ALL INCIDENTAL AND CONSEQUENTIAL LOSS OR DAMAGE.

In no event shall WESSOL, LLC be liable for any incidental, special, consequential or punitive damages, or for any costs, attorney fees, expenses, losses or delays alleged to be as a consequence of any damage to, failure of, or defect in any product including, but not limited to, any claims for loss of profits. Some states do not allow limitations on how long an implied warranty lasts, or the exclusion or limitation of incidental or consequential damages, so these limitations or exclusions may not apply to you. This warranty gives you specific legal rights and you may have other rights which vary from state to state.

fzspray.com/warranty



FLOWZONE[®]

CONCRETE +

fzspray.com/concreteplus

spraysquad@fzspray.com

+1 803.339.2500

© WESSOL, LLC 2022