

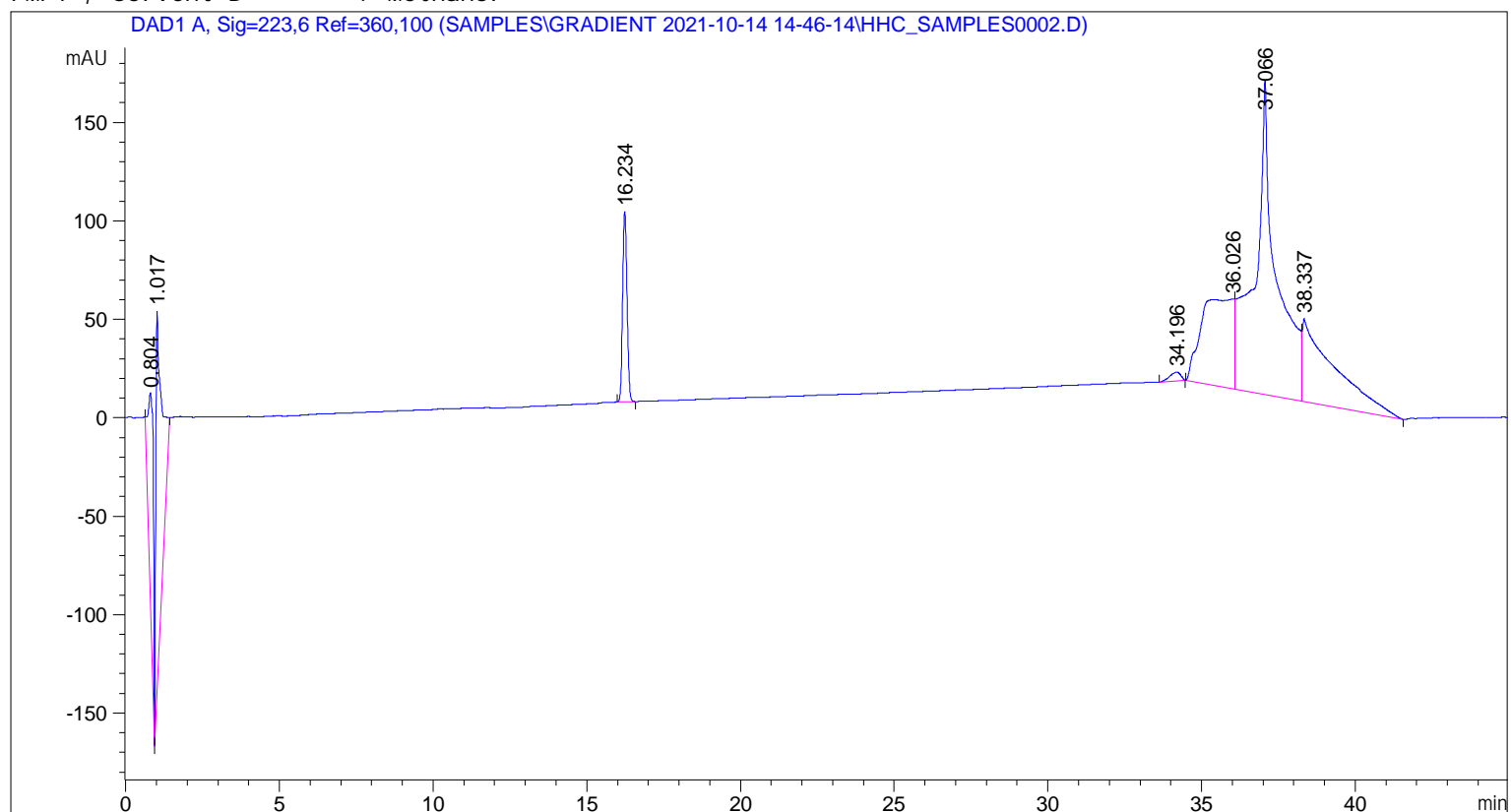
Sample Name: 101121KSD1

```
=====
Acq. Operator   : ADS                               Seq. Line :    2
Acq. Instrument : Instrument 1                       Location  : Vial 4
Injection Date  : 10/14/2021 3:33:04 PM             Inj       :    1
                                                    Inj Volume: 10.0 µl
Acq. Method     : C:\CHEM32\1\DATA\SAMPLES\GRADIENT 2021-10-14 14-46-14\CANNABINOID_ACN_
                GRADIENT_30.M
Last changed    : 10/14/2021 2:37:20 PM by ADS
Analysis Method : C:\CHEM32\1\METHODS\CANNABINOID_ACN_GRADIENT_30.M
Last changed    : 10/14/2021 2:37:20 PM by ADS
=====
```

```
Instrument Conditions :      At Start      At Stop
Column Temp. (left)  :      30.0          30.0 °C
Column Temp. (right) :      30.0          30.0 °C
Pressure             :      274.7          273.4 bar
Flow                 :      1.500          1.500 ml/min
```

```
Detector Lamp Burn Times: Current On-Time Accumulated On-Time
DAD 1, UV Lamp          :      483.94          2231.0 h
DAD 1, Visible Lamp     :      OFF            21215.0 h
```

```
Solvent Description :
PMP1, Solvent A      : Water
PMP1, Solvent B      : Methanol
```



Sample Name: 101121KSD1

ESTD Percent Report

Sorted By : Signal
Multiplier: : 1.0000
Dilution: : 1.0000
Sample Amount: : 1.00000e-1 [mg/ml]
Do not use Multiplier & Dilution Factor with ISTDs

Summed Peaks Report

Signal 1: DAD1 A, Sig=223,6 Ref=360,100

Final Summed Peaks Report

Signal 1: DAD1 A, Sig=223,6 Ref=360,100

Area Percent Report

Sorted By : Signal
Multiplier: : 1.0000
Dilution: : 1.0000
Sample Amount: : 1.00000e-1 [mg/ml]
Do not use Multiplier & Dilution Factor with ISTDs

Signal 1: DAD1 A, Sig=223,6 Ref=360,100

Table with 7 columns: Peak #, RetTime [min], Type, Width [min], Area [mAU\*s], Height [mAU], Area %. Contains 7 rows of peak data.

Totals : 1.90539e4 651.30015

Summed Peaks Report

Signal 1: DAD1 A, Sig=223,6 Ref=360,100

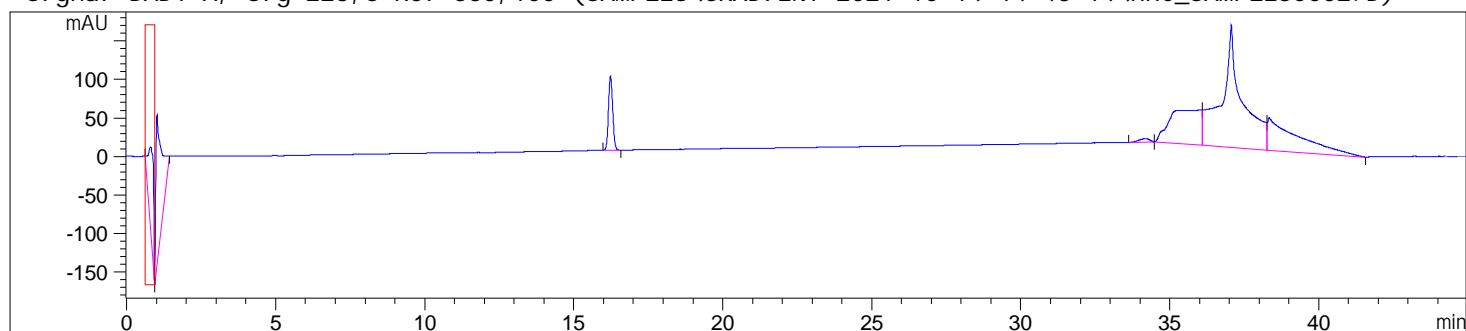
Final Summed Peaks Report

Signal 1: DAD1 A, Sig=223,6 Ref=360,100

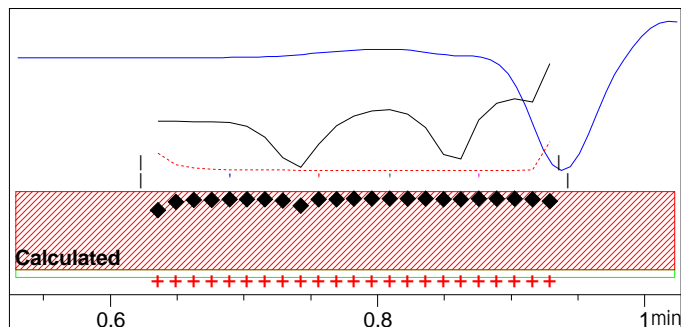
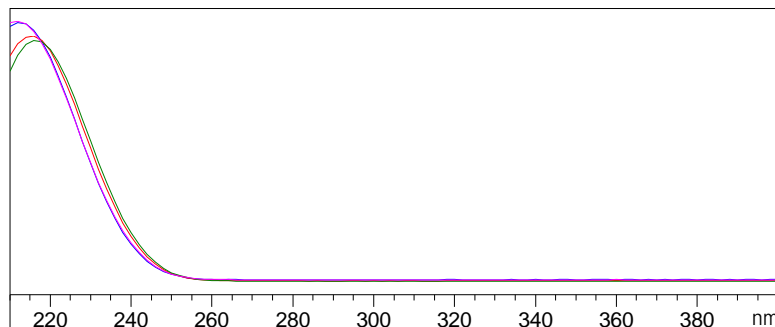
Sample Name: 101121KSD1

Compound-related custom fields:

Signal DAD1 A, Sig=223,6 Ref=360,100 (SAMPLES\GRADIENT 2021-10-14 14-46-14\HHC\_SAMPLES0002.D)



Peak : 1 at 0.804 min Name : ?



-&gt; The purity factor exceeds the calculated threshold limit. &lt;-

Purity factor : 995.221 (23 of 23 spectra exceed the calculated threshold limit.)

Threshold : 999.913 (Calculated with 23 of 23 spectra)

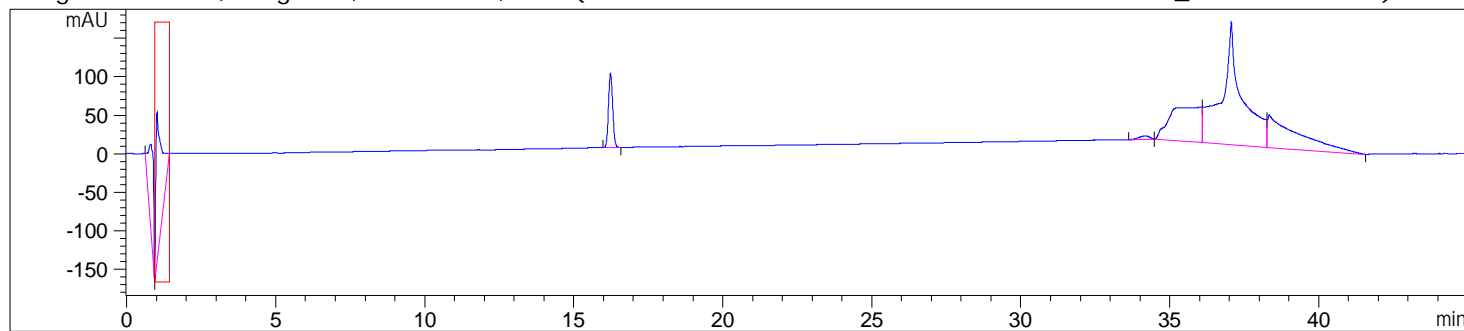
Reference : Peak start and end spectra (integrated) (0.623 / 0.943)

Spectra : 4 (Selection automatic, 5)

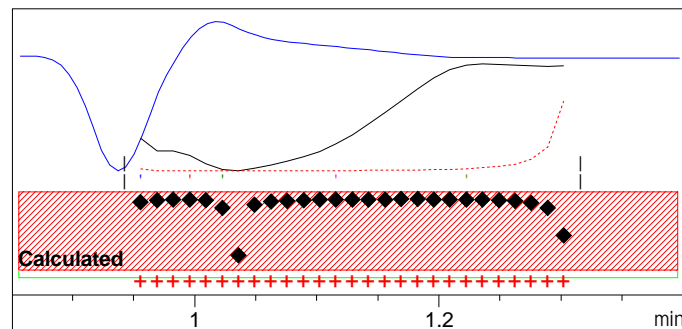
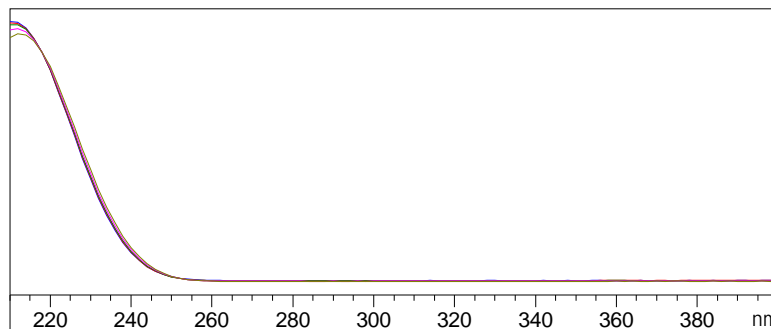
Noise Threshold: 0.053 (12 spectra, St.Dev 0.0294 + 3 \* 0.008)

Sample Name: 101121KSD1

Signal DAD1 A, Sig=223,6 Ref=360,100 (SAMPLES\GRADIENT 2021-10-14 14-46-14\HHC\_SAMPLES0002.D)



Peak : 2 at 1.017 min Name : ?



-&gt; The purity factor exceeds the calculated threshold limit. &lt;-

Purity factor : 999.395 (27 of 27 spectra exceed the calculated threshold limit.)

Threshold : 999.958 (Calculated with 27 of 27 spectra)

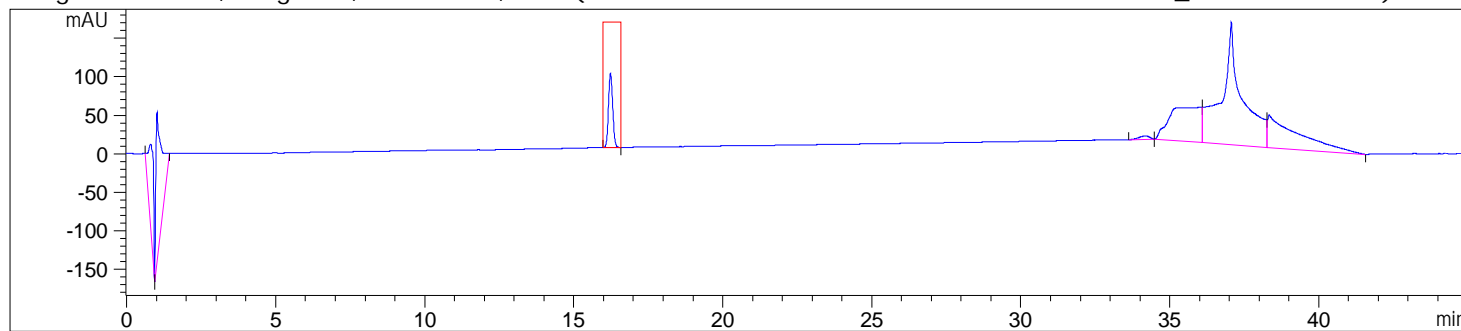
Reference : Peak start and end spectra (integrated) (0.943 / 1.316)

Spectra : 5 (Selection automatic, 5)

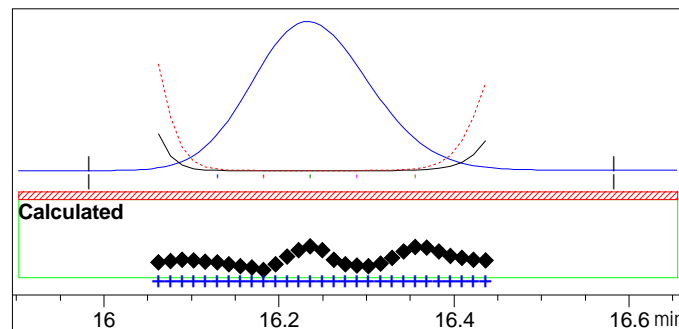
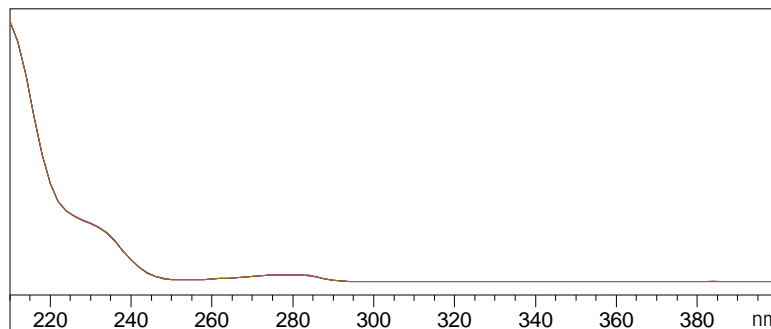
Noise Threshold: 0.053 (12 spectra, St.Dev 0.0294 + 3 \* 0.008)

Sample Name: 101121KSD1

Signal DAD1 A, Sig=223,6 Ref=360,100 (SAMPLES\GRADIENT 2021-10-14 14-46-14\HHC\_SAMPLES0002.D)



Peak : 3 at 16.234 min Name : ?



-&gt; The purity factor is within the calculated threshold limit. &lt;-

Purity factor : 999.957 (29 of 29 spectra are within the calculated threshold limit.)

Threshold : 999.782 (Calculated with 29 of 29 spectra)

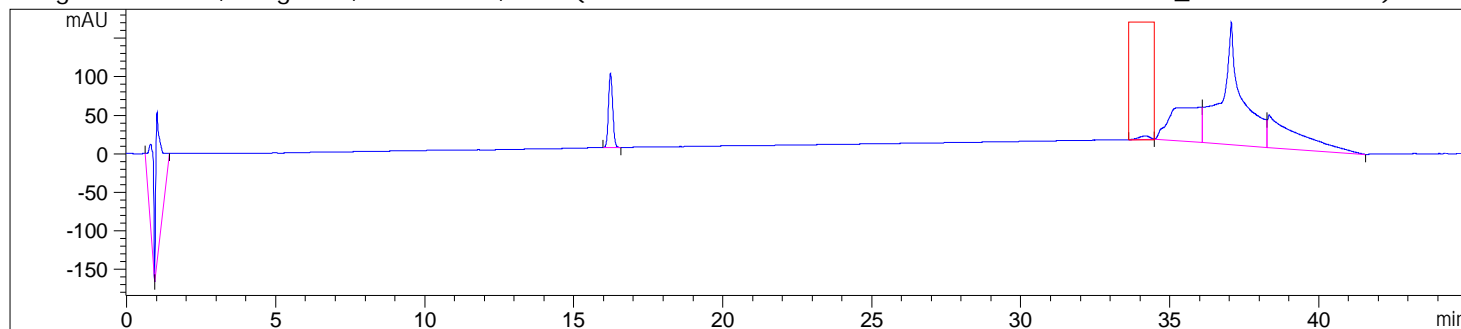
Reference : Peak start and end spectra (integrated) (15.983 / 16.583)

Spectra : 5 (Selection automatic, 5)

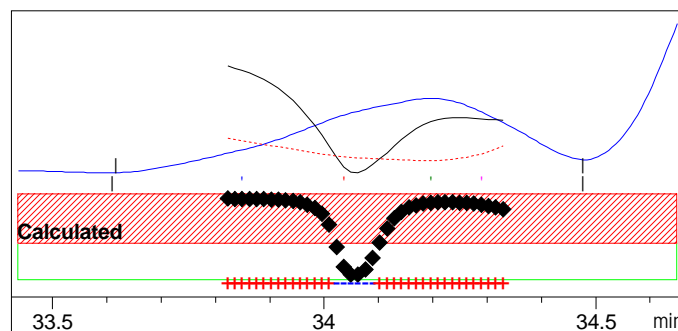
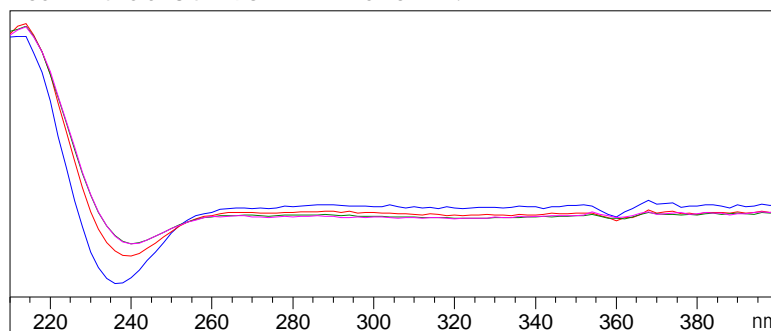
Noise Threshold: 0.053 (12 spectra, St.Dev 0.0294 + 3 \* 0.008)

Sample Name: 101121KSD1

Signal DAD1 A, Sig=223,6 Ref=360,100 (SAMPLES\GRADIENT 2021-10-14 14-46-14\HHC\_SAMPLES0002.D)



Peak : 4 at 34.196 min Name : ?



-&gt; The purity factor exceeds the calculated threshold limit. &lt;-

Purity factor : 973.519 (33 of 39 spectra exceed the calculated threshold limit.)

Threshold : 998.093 (Calculated with 33 of 39 spectra)

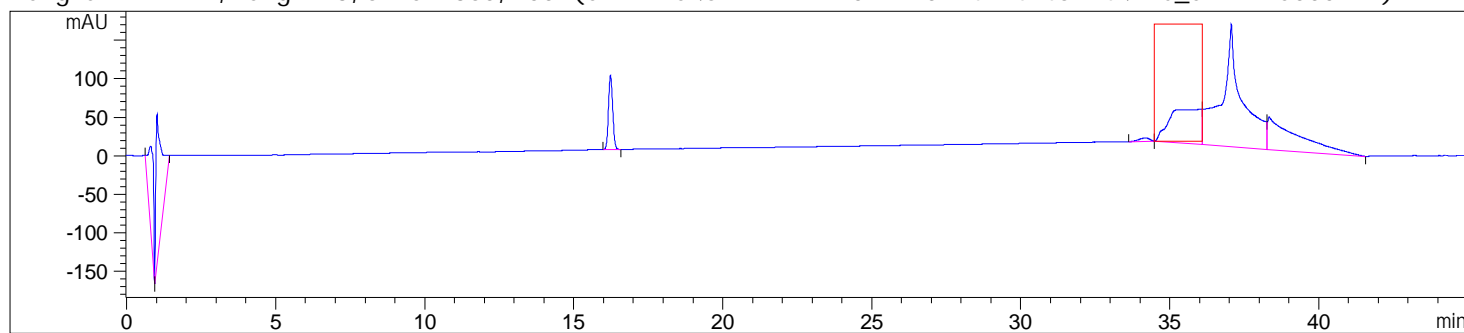
Reference : Peak start and end spectra (integrated) (33.609 / 34.476)

Spectra : 4 (Selection automatic, 5)

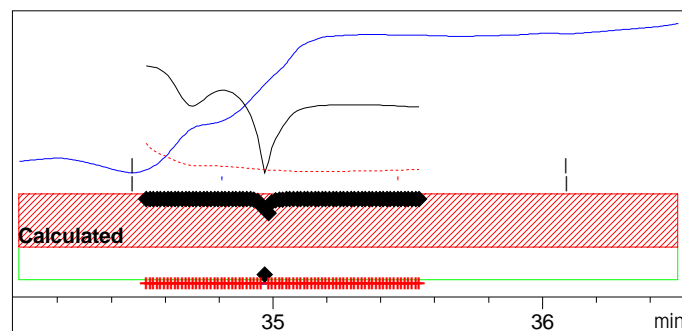
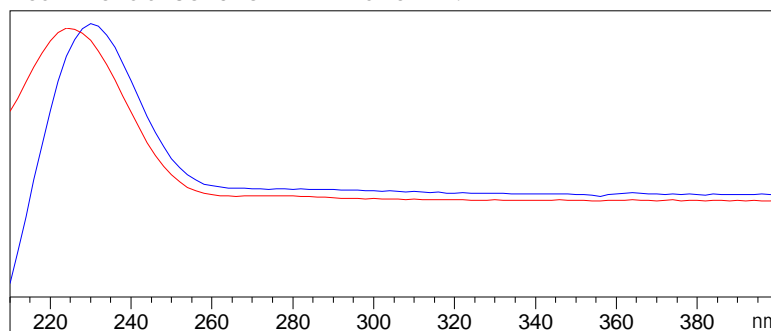
Noise Threshold: 0.053 (12 spectra, St.Dev 0.0294 + 3 \* 0.008)

Sample Name: 101121KSD1

Signal DAD1 A, Sig=223,6 Ref=360,100 (SAMPLES\GRADIENT 2021-10-14 14-46-14\HHC\_SAMPLES0002.D)



Peak : 5 at 36.026 min Name : ?



-&gt; The purity factor exceeds the calculated threshold limit. &lt;-

Purity factor : 854.560 (76 of 77 spectra exceed the calculated threshold limit.)

Threshold : 999.509 (Calculated with 76 of 77 spectra)

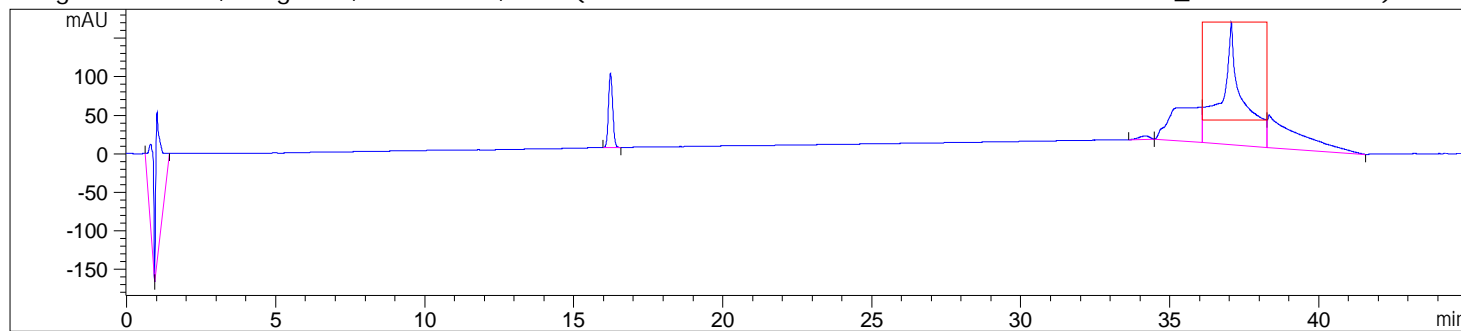
Reference : Peak start and end spectra (integrated) (34.476 / 36.089)

Spectra : 2 (Selection automatic, 5)

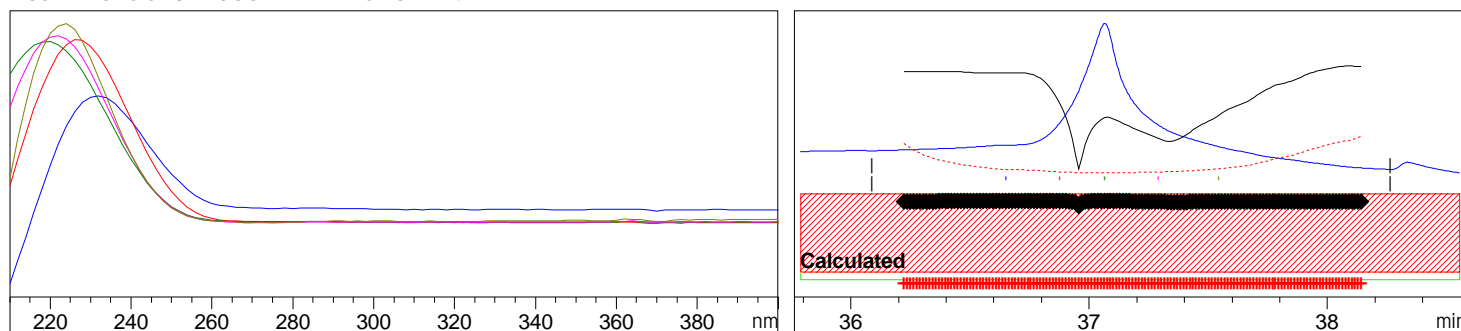
Noise Threshold: 0.053 (12 spectra, St.Dev 0.0294 + 3 \* 0.008)

Sample Name: 101121KSD1

Signal DAD1 A, Sig=223,6 Ref=360,100 (SAMPLES\GRADIENT 2021-10-14 14-46-14\HHC\_SAMPLES0002.D)



Peak : 6 at 37.066 min Name : ?



-&gt; The purity factor exceeds the calculated threshold limit. &lt;-

Purity factor : 650.679 (145 of 145 spectra exceed the calculated threshold limit.)

Threshold : 999.185 (Calculated with 145 of 145 spectra)

Reference : Peak start and end spectra (integrated) (36.089 / 38.263)

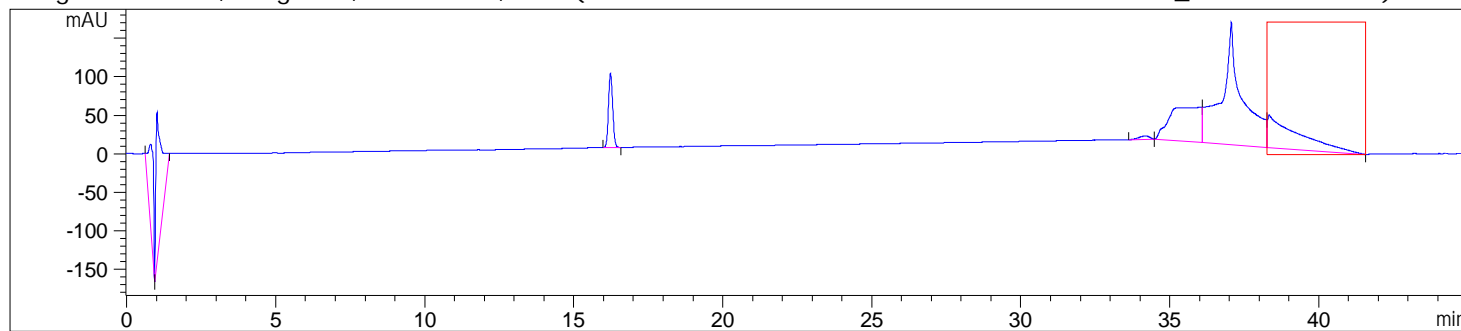
Spectra : 5 (Selection automatic, 5)

Noise Threshold: 0.053 (12 spectra, St.Dev 0.0294 + 3 \* 0.008)

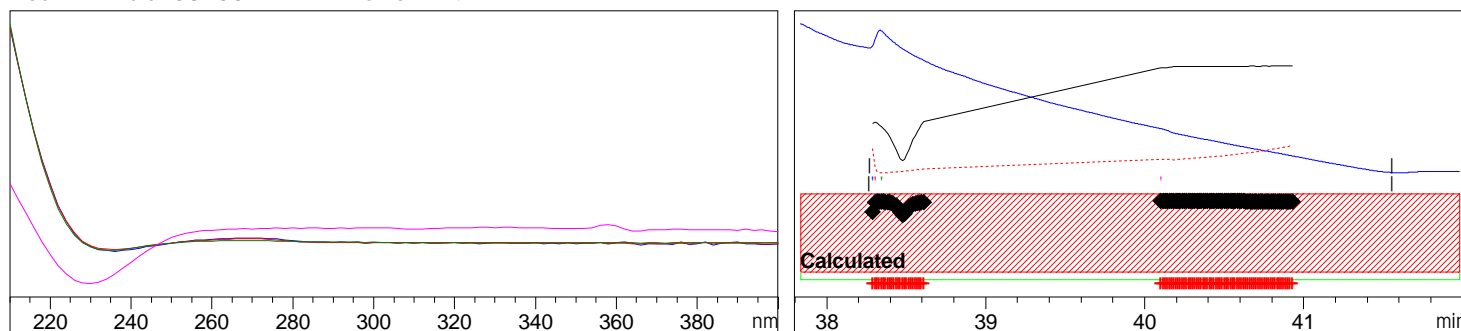


Sample Name: 101121KSD1

Signal DAD1 A, Sig=223,6 Ref=360,100 (SAMPLES\GRADIENT 2021-10-14 14-46-14\HHC\_SAMPLES0002.D)



Peak : 7 at 38.337 min Name : ?



-&gt; The purity factor exceeds the calculated threshold limit. &lt;-

Purity factor : 367.464 (88 of 88 spectra exceed the calculated threshold limit.)

Threshold : 998.683 (Calculated with 88 of 88 spectra)

Reference : Peak start and end spectra (integrated) (38.263 / 41.556)

Spectra : 4 (Selection automatic, 5)

Noise Threshold: 0.053 (12 spectra, St.Dev 0.0294 + 3 \* 0.008)

\*\*\* End of Report \*\*\*