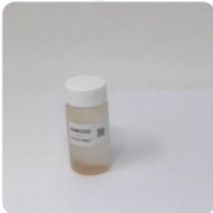


License No. 800025015  
FL License # CMTL-0003  
CLIA No. 10D1094068

## Certificate of Analysis

Compliance Test

Batch # D10-2106229 Batch Date: 2021-07-11 Extracted From: HEMP	Test Reg State: Florida	Production Facility: CNP Operating Production Date: 2021-07-09
Order # CNP210628-020012 Order Date: 2021-07-11 Sample # AABO232	Sampling Date: 2021-07-14 Lab Batch Date: 2021-07-14 Completion Date: 2021-07-27	Initial Gross Weight: 11.921 g



Potency Tested  
 Residual Solvents Passed

### Delta 8/Delta 10 Potency 12

Specimen Weight: 49.100 mg

Analyte	Dilution (1:n)	LOD (%)	LOQ (%)	Result (mg/g)	(%)
Delta-10 THC	1000.000	0.000003	0.001	601.100	60.110
Delta-8 THC	100.000	0.000026	0.001	170.011	17.011
Delta-9 THC	100.000	0.000013	0.001	<LOQ	
CBDA	100.000	0.00001	0.001	<LOQ	
CBGA	100.000	0.00008	0.001	<LOQ	
CBN	100.000	0.000014	0.001	<LOQ	
CBDV	100.000	0.000065	0.001	<LOQ	
CBD	100.000	0.000054	0.001	<LOQ	
CBG	100.000	0.000248	0.001	<LOQ	
THCV	100.000	0.000007	0.001	<LOQ	
THCA-A	100.000	0.000032	0.001	<LOQ	
CBC	100.000	0.000018	0.001	<LOQ	

Tested (LCUV)

### Potency Summary

Total Delta 8 17.01%	Total Delta 10 60.11%
Total THC None Detected	Total CBD None Detected
Total CBG None Detected	Total CBN None Detected
Other Cannabinoids None Detected	Total Cannabinoids 77.12%

*Xueli Gao*  
Xueli Gao  
Ph.D., DABT  
Lab Toxicologist

*Axia Sun*  
Axia Sun  
D.H.Sc., M.Sc., B.Sc., MT (AAB)  
Lab Director/Principal Scientist



Definitions and Abbreviations used in this report: \*Total CBD = CBD + (CBD-A \* 0.877), \*Total THC = THCA-A \* 0.877 + Delta 9 THC, \*CBG Total = (CBGA \* 0.877) + CBG, \*CBN Total = (CBNA \* 0.877) + CBN, \*Other Cannabinoids Total = CBC + CBDV + THCV + THCV-A, \*Total Detected Cannabinoids = CBD Total + CBG Total + CBN Total + THC Total + CBC + CBDV + THCV + THCV-A, \*Analyte Details above show the Dry Weight Concentrations unless specified as 12% moisture concentration. (mg/ml) = Milligrams per Milliliter, LOQ = Limit of Quantitation, LOD = Limit of Detection, Dilution = Dilution Factor (ppb) = Parts per Billion, (%) = Percent, (cfu/g) = Colony Forming Unit per Gram (cfu/g) = Colony Forming Unit per Gram, LOD = Limit of Detection, (µg/g) = Microgram per Gram (ppm) = Parts per Million, (ppm) = (µg/g), (aw) = aw (area ratio) = Area Ratio, (mg/Kg) = Milligram per Kilogram, \*Measurement of Uncertainty = +/- 5%

This report shall not be reproduced, without written approval, from ACS Laboratory. The results of this report relate only to the material or product analyzed. Test results are confidential unless explicitly waived otherwise. Accredited by a third-party accrediting body as a competent testing laboratory pursuant to ISO/IEC 17025 of the International Organization for Standardization.