

Assembly Instructions

Invacare® Top End® Pro™-2 All Sport Wheelchair



Part #: 1181409
Rev: A

Be sure to record your serial number and read the owners manual.

What you will receive



Box includes:

- Complete wheel assemblies
- Base frame
- Seat frame (assembled w/ side guards, upholstery, cushion, and frame protector)
- Footrest
- Axles
- Adjustable anti-tip assembly
- Positioning strap
- All attaching hardware.



Tools you will need:

- **Adjustable wrench**
- **5mm allen wrench**
- **4mm allen wrench**
- **Two 10 mm combination wrenches or socket**
- **7/16 and ¾ inch wrench**
- **An assistant may also be helpful to hold frame in place while installing seat frame**
- **Entire assembly should take about 30-45 minutes**

Step one – Adjusting and installing wheels

A. Adjust the nut on the axle receiver.

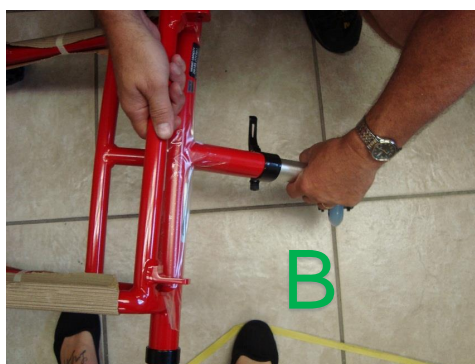
- The axle receiver nut will be loosely installed on the axle receiver bolt, this nut will need to be tightened down with the adjustable wrench.

B. Adjust the nut on the actual axle so that the ball bearing locks into place when put through the wheels and inserted into axle receiver.



Step two – Installing anti-tip

- Install adjustable anti-tip wheel.
- A. Release and loosen the quick release lever attached to the anti-tip clamp
- B. Insert adjustable anti-tip into base frame, with wheel facing down.
- C. With rear wheels still on tighten quick release lever with anti-tip at level desired (should be about a fingers width off the ground)
 - Wheels can be taken off after this is done, which will prevent the chair from rolling around while installing the other parts.



Step three – Attaching the L brackets

- There will be L brackets and curved brackets
 - The L brackets are for the front, and curved for the rear
- The L brackets attach with the bolts that are bagged with 4 bolts that are all the same size.
- The curved brackets attach with the bolts that are bagged with 2 short bolts and 2 longer bolts and then separate bag with 2 single bolts.
- Note : Bolts should be left a little loose until all are installed.



These bolts will be used instead of the two larger bolts in the hardware bag for the curved brackets



Step three – continued (L brackets)

- **Attach the L brackets to the inside of the welded tabs on the seat frame.**
 - Insert the bolt from the inside of the seat frame (use one flat washer, one split washer, and one nut for each bolt).
 - Use the two 10MM wrenches to hold and tighten the bolts.
- **Keep in mind that the hole that you choose to mount the L bracket in will determine the center of gravity on the chair.**
 - Refer to page 40 of the owners manual



Step four – Curved brackets

- **Attach the curved brackets to the inside of the welded tabs on the seat frame.**
 - » You will want to take the larger bolts out of the bag and set them aside (these are extras and will not be used on the chair, use the two smaller bolts in the hardware bag to attach each curved bracket to the chair.
 - » The bolts which are bagged separately will be used to attach the curved bracket to the base frame.
- **Insert the bolts from the outside of the seat frame (use one flat washer, one nordlock washer, and one nut for each bolt.**
 - » Use a 10MM wrench and a 4MM allen wrench to tighten the bolts in place.

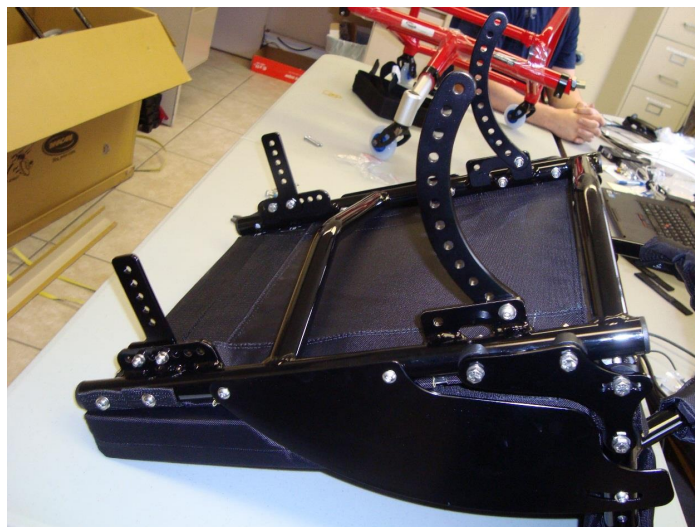
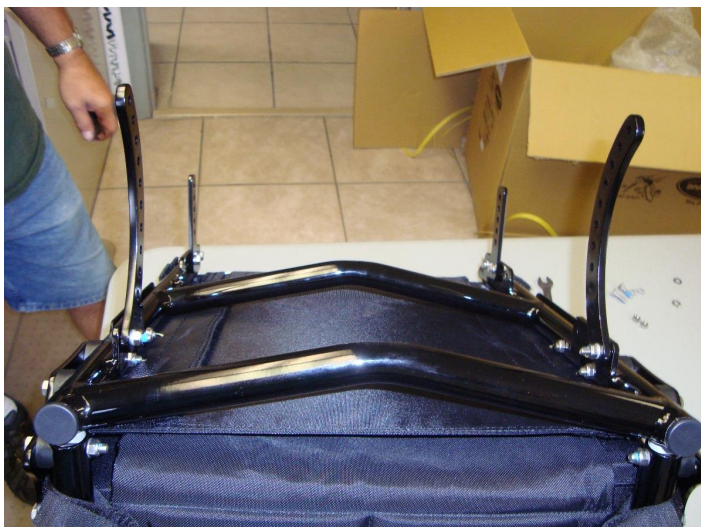


These will be used instead



Step four - continued

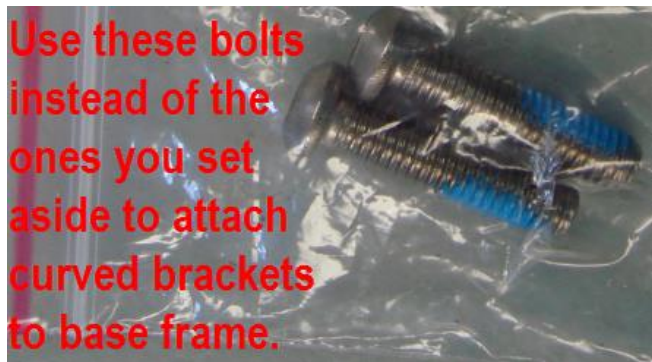
Be sure to leave the brackets slightly loose, so that they can be adjusted and attached to the base frame



Step five – Attach seat frame to base frame

- Take seat frame and place it on top of the base frame, with the brackets lined up to the tabs welded in the rear and the holes drilled in the frame on the front.
- Use the coped washers and the bolts that are bagged together to attach the front L brackets into the hole.
- Use the bolts that had been set aside earlier to attach the curved brackets to the welded tab.
- Now go back to the brackets on the seat frame, and make sure to tighten them all the way down.

**Use these bolts
instead of the
ones you set
aside to attach
curved brackets
to base frame.**



Step five – continued (front L brackets)

- Place flat and a coped washer on each bolt then put the bolt through the drilled hole in the front of the frame (make sure the head of the bolt is on the inside of the frame), place the second coped washer on the inside of the frame and then place base frame on top and secure in the position desired.



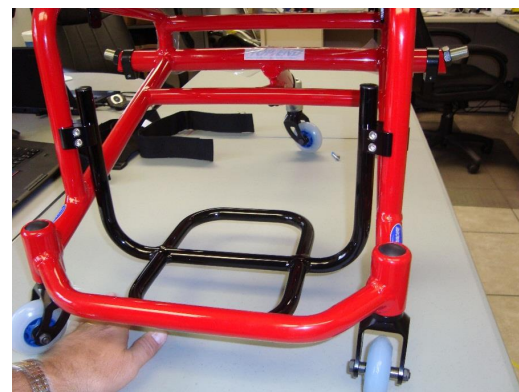
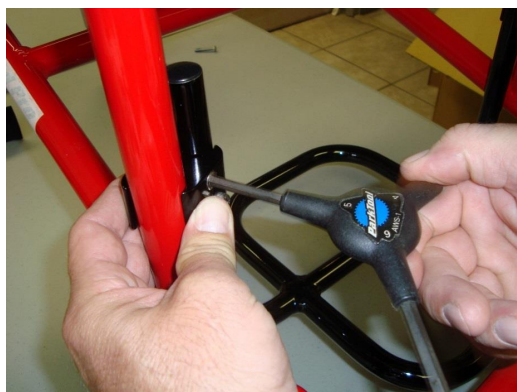
Step Six – Attaching the curved brackets

- Adjust the seat frame so that the curved bracket is in the position and height desired.
- Use the bolts, as well as a washer, and a nut to attach and secure the curved bracket in place, again, make sure the head of the bolt is installed on the inside of the frame.



Step Seven – footrest

- **Use the two-part clamps and 4 bolts.**
 - Assemble the clamps as seen in picture below.
- **Place the larger side of the clamps around the base frame down tube in the position desired.**
- **Put the other side of the clamp around the footrest and tighten using allen key.**



Step Eight – Calf strap and seat belt

- Attach foot strap around front down tubes in desired position.
- Attach seat belt strap around the back frame in desired location. (we suggest putting the strap through the sideguard for secure attachment.)





Special notes – Seat depth info

- **The seat depth is factory set at 17”, but is adjustable. There are two straps in the front of the chair, one can be removed to make the seat depth 15”, and the second can be removed making the chair 13” deep. A new cushion will need to be purchased, or the current one modified, to accommodate the change in seat depth.**
- **Call Customer service with any questions, 1-800-532-8677 or email us at Topendorders@Invacare.com.**

Enjoy your chair



- Be sure to record your serial number and read the owners manual.
- If you have any questions you can call customer service at 1-800-532-8677



©2015 Invacare Corporation. All rights reserved. Trademarks are identified by the symbols ™ and ®. All trademarks are owned by or licensed to Invacare Corporation unless otherwise noted. Form 15-195 151074.