

[FLARESPACE]

Tenzing Trailhead Brushguard

Installation Instructions

02.27.24



LET 'S GO!!

Thank You for your purchase. The Tenzing Trailhead Brushguard is named after Tenzing Norgay. Tenzing was the one of the first two individuals known to reach the summit of Mount Everest which he accomplished with Sir Edmund Hillary on May 29, 1953.

This is a fairly easy install and should take about 2 hours. You will need a trusty friend to help lift the Brushguard into place.

Extreme attention to detail with items fitting perfectly is a priority.

Please be sure to read this instruction manual in its entirety before installing this Brushguard. Safety glasses are strongly recommended. Take your time and be mindful with the tools as personal harm and/or damage is possible if you're not careful.

Only install this product with the supplied hardware as substituting or modifying hardware could damage your awesome rig.

Thank you for supporting the overlanding community. We are jealous that we can't join you out on the open road and beyond, but sincerely hope this product will enrich your experience.

- Your friends at Flarespace

PARTS INCLUDED:

1. (1) Tenzing Trailhead Brushguard
2. (1) 40mm M8 bolt
3. (2) 8mm Flat Washers
4. (2) 5/16" Aluminum spacers 5/8" in height
5. M5 Hex (Allen) wrench (used to remove red tow hook cover)
6. (2) Front Sensor Mounts

TOOLS NEEDED:

1. Flat Blade Screwdriver
2. File or Pine Cone Drill Bit
3. ½" Wrench (Ratcheting Box Wrench makes it easier)
4. ½ Socket
5. T 45 Socket
6. T 20 Socket (for European license plate adaptor removal)
7. 2" Green Painters Tape
8. Alignment Tool
9. Loctite 242
10. (2) 3/8" size, 1" OD, high-temp PEEK plastic washers



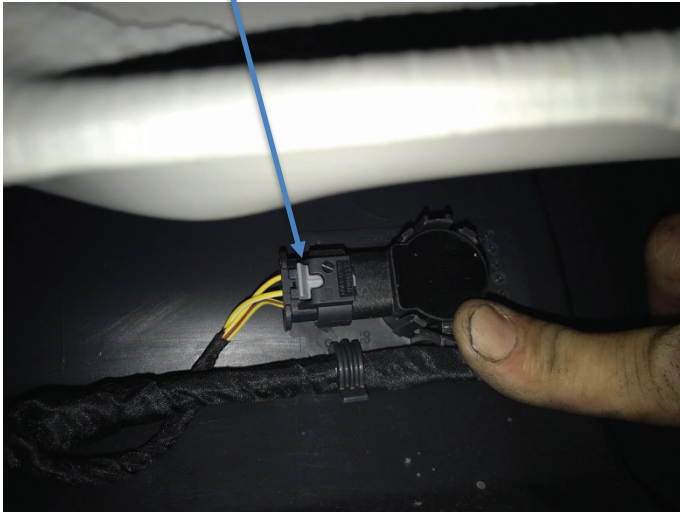
STEP 1:

Remove metal cross member and (4) factory bolts from underneath van using 1/2" wrench and socket.

Save these bolts for use with Tenzing Trailhead Brushguard.



Slide this clip to left.



STEP 2: From underneath the front bumper locate the (2) sensors on either side of the license plate frame.

Locate the white clip on each sensor and with a small flathead screw driver, carefully push this clip to the left. This will release the connector from the sensor. You will have to wiggle the connector free from the sensor.



Sensor

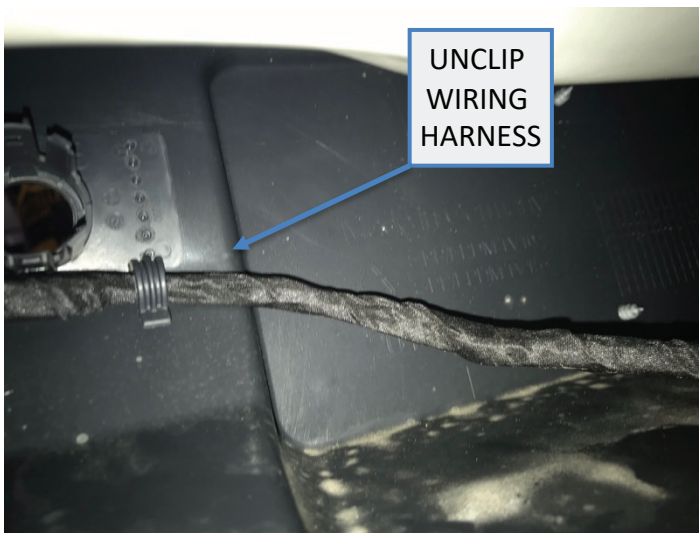
STEP 3: Unclip sensors from bumper and put in a safe place.

STEP 4:

Using a file or pine cone bit, carefully widen both sensor holes on original bumper just enough to bring the wire harness and connector back thru original holes.

TECH NOTE: Do not remove any more material than necessary.





UNCLIP
WIRING
HARNESS

STEP 5:

From underneath vehicle, unclip the wiring harness from the original bumper allowing the sensor connectors to obtain slack.



STEP 6:

Push the sensor connector through the hole you enlarged. Reconnect the sensors to the outlets and leave them hanging for now.



STEP 7:

Using a flat blade screwdriver, remove the plastic cover revealing the tow hook mounting hole. Attach factory tow hook to van and tighten into place with alignment tool.

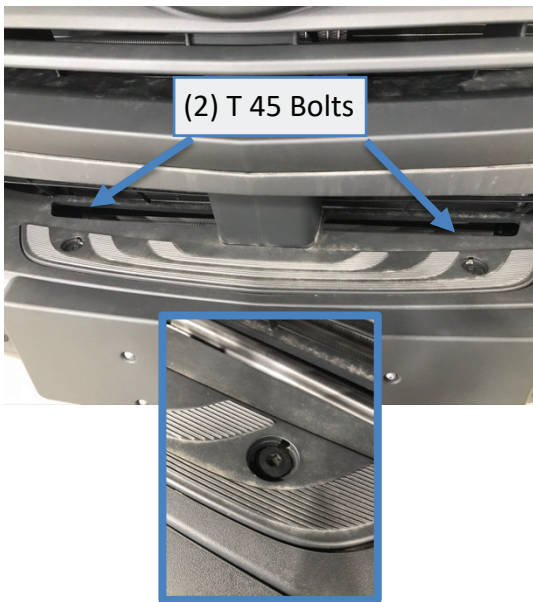
NOTE: Factory tow hook should be located underneath passenger side floor mat along with jack accessories.



STEP 8:

Prep original bumper on both sides as pictured using 2" automotive grade painters tape, Double up layers so the Mercedes bumper doesn't get scratched when installing TTB.

Tech Tip: You may also want to tape the lower portion of the Mercedes Emblem.



STEP 9:

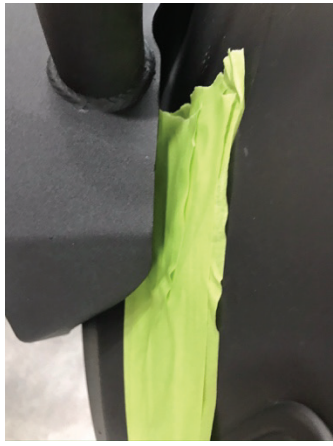
Remove (2) original T 45 Bolts located on top of original bumper.



STEP 10:

Install 5 washer stack in top (2) holes of original bumper.

TECH NOTE: Parts kits may include spacers rather than washers. Simply use one large and one smaller spacer for each side in place of the washers.



STEP 11:

Have a friend, buddy, or neighbor help you lift the Tenzing into place. Attach to rig by hand threading only the top (2) included bolts to hold Tenzing in place. Line up so that there is equal spacing on both sides of bumper.



STEP 12:

Line up the (4) bolts underneath. Add Loctite 242 to all bolts and hand tighten.

TECH TIP: Push the plastic bumper upward from underneath to get to all (4) bolts.



STEP 13:

Inspect Tenzing from top and adjust so that there is equal spacing on both sides of the Brushguard in-between stock bumper and Tenzing. Tighten all bolts when you are happy with the alignment.



Front Sensor



Sensor Hole Cover

STEP 14:

Insert front sensors into Brushguard from behind. There is very little slack for sensors, and little room for your hands, so be careful.

If you don't have front sensors, use the (2) plastic sensor hole covers.

That's it, you are done! Congrats, you just finished the install. Now you can enjoy the rewards and your rig has never looked better.

YOUR WARRANTY

Subject to the limitations and exclusions described in this warranty, Flarespace will remedy defects in materials or workmanship by repairing or replacing, at its option, a defective product without charge for parts or labor. In addition, Flarespace may elect, at its option, not to repair or replace a defective product but rather issue to a purchaser a refund equal to the purchase price paid for the product or a credit to be used toward the purchase of a new Flarespace product.

This warranty excludes problems caused by normal wear and tear including, but not limited to, scratches, dents, tears, or aesthetic oxidation of surfaces, natural breakdown of colors and materials over extended time and use, commercial use, accidents, or unlawful vehicle operation. No warranty is given for defects resulting from conditions beyond Flarespace's control including, but not limited to, modifications or repairs not performed or authorized by Flarespace, misuse, overloading, or failure to assemble, install or use the product in accordance with Flarespace's written instructions or guidelines included with the product or made available to the purchaser originally.

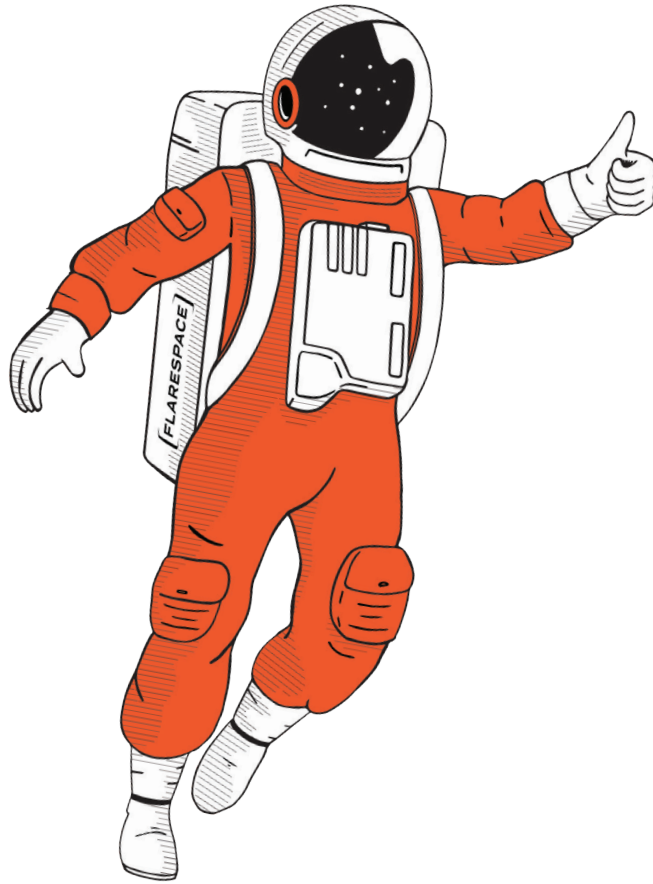
Items purchased from dealers may either be returned to the place of purchase and they will facilitate your warranty or you may work directly with Flarespace.
Warranties are non-transferable.

HOW DO I SUBMIT A WARRANTY CLAIM?

Email info@flarespace.com and include the following:

When the product was purchased, what the issue is, and photo(s) of the product highlighting the area of issue.

We are available Monday - Friday from 9am-5pm MT, and will try to reply to your email within 2 business days or as soon as possible.



FLARESPACE.COM
COPYRIGHT © 2024
FLARESPACE, LLC.
ALL RIGHTS RESERVED