



nVader

BY [FLARESPACE]

TIRE BUCKET MOUNT



Installation Instructions

NVADER Tire Mount

Overview:

This procedure covers how to install the Nvader Tire Mount to your Nvader rack and how to mount a spare tire to the Nvader tire mount. Please read through and carefully follow these installation instructions completely, should you have any questions or need any assistance contact Flarespace.

Applicable Vehicles:

Any vehicle with a Nvader Rack installed

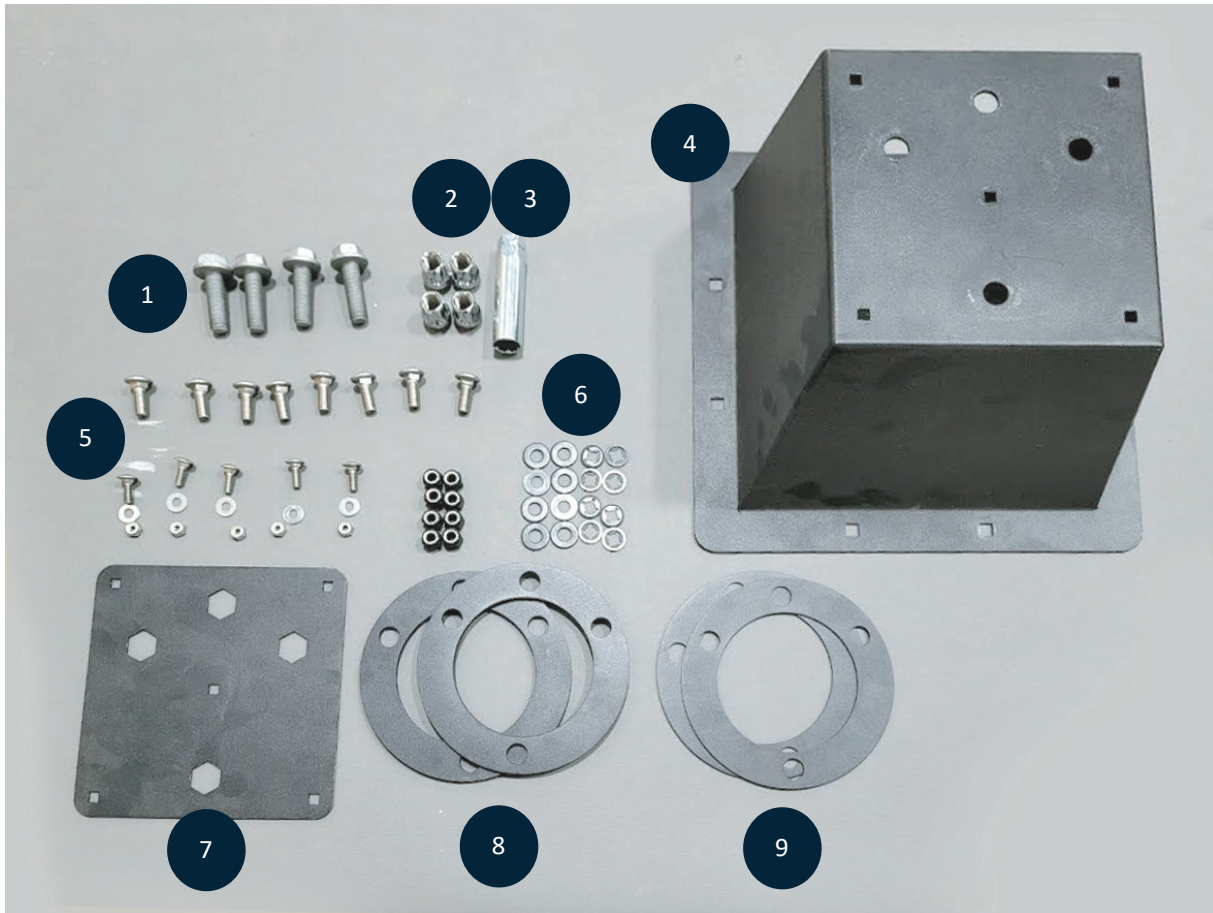
Safety Alert:

This procedure requires the use of powered tools, thus we highly recommend only performing this procedure if you feel comfortable doing so. If you do choose to proceed, we strongly recommend the use of personal protective equipment. If not installed correctly, this tire mount may cause serious damage or death. It is recommended to always recheck your work once finishing a step.

Tools and Supplies Needed:

- Nvader Tire Mount Kit
- Torque wrench
- 6" socket extension
- 9/16" socket
- 7/16" socket
- 17mm socket

Part Identification



- 1. (4) Mounting Bolts
- 2. (4) Lug Nuts
- 3. Splined Lug Nut Tool
- 4. Wheel Mount Platform
- 5. Mounting Bolt Capture Plate Hardware

- 6. Mounting Hardware
- 7. Mounting Bolt Capture Plate
- 8. (2) Thick Wheel Spacer Rings
- 9. (2) Thin Wheel Spacer Rings

Installation Procedure:

1. Assemble the tire mount
 - a. Insert the (4) Provided M14 Flange bolts as shown in figure 1.
 - b. Place the capture plate into the tire mounting platform so that the M14 Flange bolts are aligned with the corresponding holes in the wheel mount platform and are sandwiched between the capture plate and wheel mount platform. See figure 2.



Figure 1
Insert (4) M14 bolts into the mounting bolt capture plate.

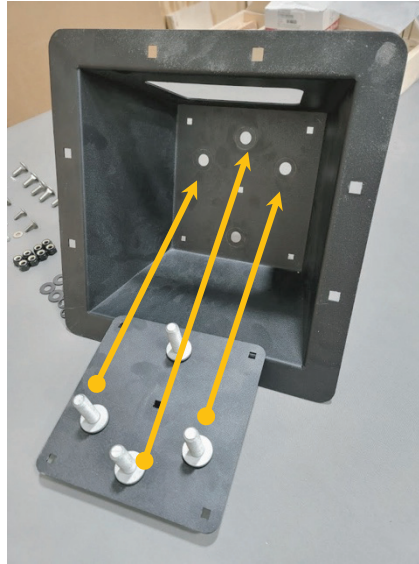


Figure 2
Align M14 bolts with holes in tire mounting platform.

- c. Install (1) of the 1/4"-20 x 3/4" carriage bolts through the square hole in the center of the wheel mounting platform front face as shown in figure 3a. Then, loosely install a 1/4" washer and 1/4"-20 nyloc nut to the bolt on the inside of the wheel mount platform as shown in figure 3b. Pay special attention that the mounting bolts stay engaged with the capture plate during this process.

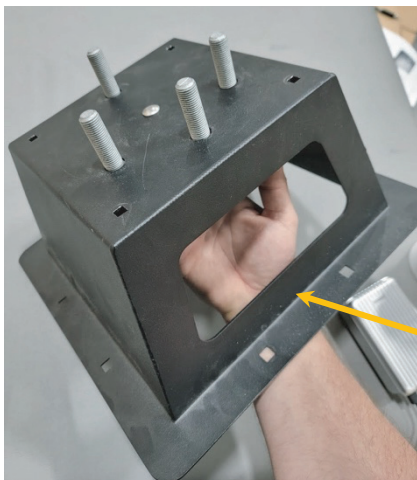


Figure 3b
Loosely install 1/4" washer and nyloc nut

Figure 3a
Insert 1/4"-20 carriage bolt



- d. Install the remaining (4) 1/4" bolts, washers and nuts to the wheel mount platform and the capture plate.

- e. Using a torque wrench with a 6" socket extension, tighten the 1/4" nuts on the inside of the wheel mounting platform shown in figure 4. While tightening each nut, ensure the head of the carriage bolt stays pressed against the front face of the wheel mounting platform so that the square hole does not become stripped out. Torque the nuts to 8ft-lbs. or 96in-lbs. Over torquing these bolts could cause the bolt to fracture and break.

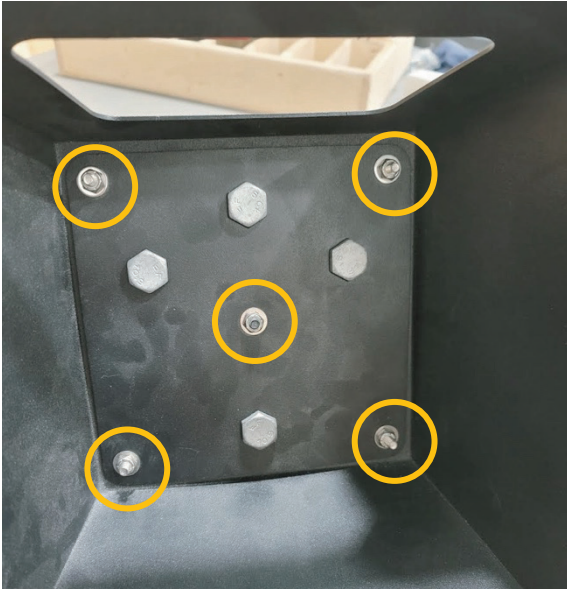


Figure 4

Tighten all (5) 1/4" nuts

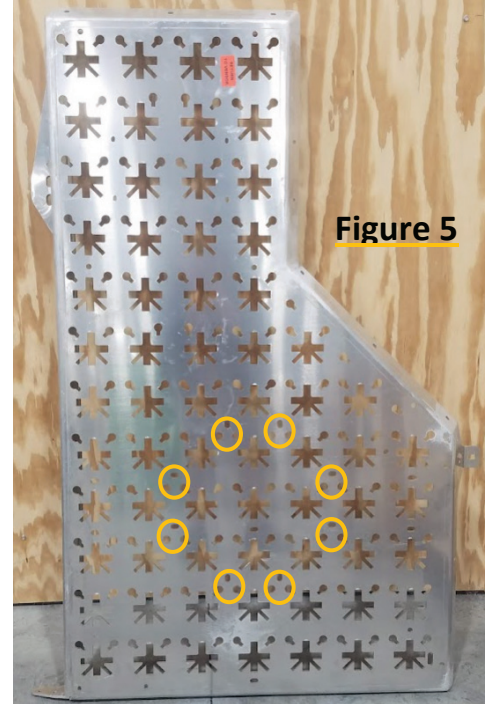
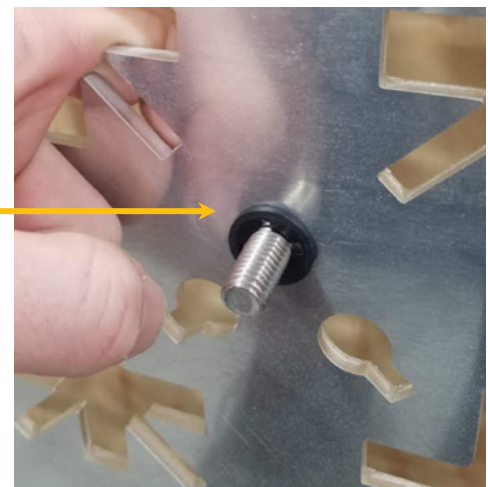


Figure 5

- 2. Install the Nvader tire mount to the Nvader rack
 - a. **On the driver's side** Nvader rack, locate the (8) mounting slots shown in figure 5.
 - b. In each mounting slot, insert a 3/8"-16 carriage bolt from the backside of the Nvader rack through the front and install a retaining washer as shown in figure 6.

Figure 6

Install 3/8" carriage bolt and hold in place with a retaining washer. These retaining washers are needed to help installation on a van that the racks have already been installed. Therefore, if your Nvader racks are not installed on your van you do not have to have the retaining washers.



- c. Next, align the tire mount mounting holes (located on the outer flange of the wheel mounting platform) with the (8) bolts on the Nvader rack. Loosely install a 3/8" washer and nyloc nut to each bolt. Ensure the lug bolt pattern is oriented as shown in figure 7.

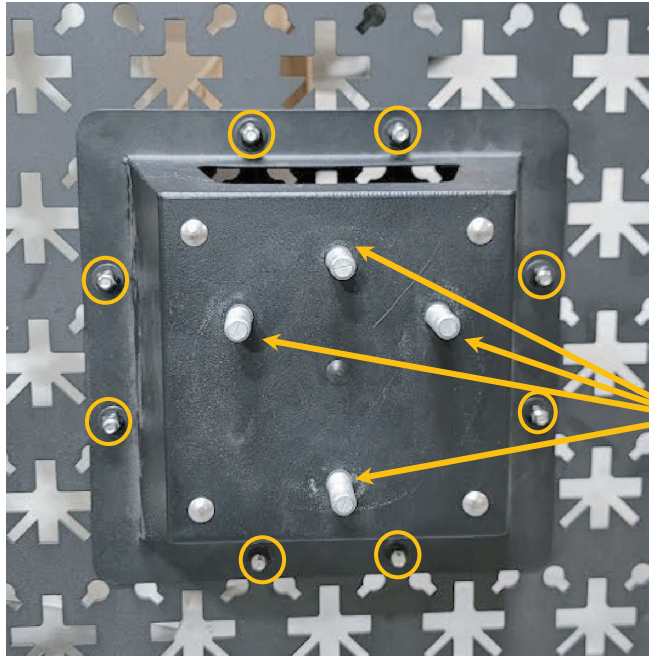


Figure 7

Install washers and nuts to all (8) mounting bolts.

Ensure proper lug bolt orientation, 3 bolts to the top of the tire mounting platform and to the top of the Nvader panel.

- d. Using a torque wrench set to 30 ft-lbs and a 9/16" socket, torque each of the 3/8" nuts. While tightening each nut, ensure the head of the carriage bolt stays pressed against the back face of the Nvader rack so that the bolt slot does not become stripped out.
3. Mount spare tire to the Nvader tire mount.
 - a. Install the appropriate wheel spacers as follows
 - i. Beast brand Beast Mode wheels do not use any spacers.
 - ii. Stealth and non-Beast brand Beast Mode wheels use all spacers, installed in the order (first to last) thick, thin, thick, thin as shown in figure 8.



Figure 8

Install spacers as required.



Beast MODE wheel no spacers needed



Vision branded Beast MODE Wheels all spacers needed



Stock Mercedes wheel all spacers needed



Stealth and Classic MODE wheels all spacers needed

**open ended ball seat m14x1.5 lug nuts needed not supplied*

When tire and wheel are installed to the NVADER panel system via this mount, the tire should just make contact with the main plane of the NVADER panel and be snug. If using the spacers when not needed this can cause the tire to be mounted off of the rear panel and can cause extreme stress to the panel resulting in serious damage, injury or death.

- b. Place wheel on exposed M14 mounting studs as shown figure 9 and begin installing the (4) provided splined open ended M14x1.5 lug nuts.
 - c. Torque the (4) lug nuts to 50 ft-lbs with the corresponding socket and splined lug nut tool.
4. Recommended service procedures
- a. It is recommended to check the torque on the spare tire mount lug nuts during every oil change and tire rotation based on the vehicle's standard maintenance intervals.



Figure 9
Install (4) lug nuts.



*Special note:
When using the spacers you may see some threads to the interior of the open nut. These are still the correct thread engagement.*

YOUR WARRANTY

Subject to the limitations and exclusions described in this warranty, Flarespace will remedy defects in materials or workmanship by repairing or replacing, at its option, a defective product without charge for parts or labor.

In addition, Flarespace may elect, at its option, not to repair or replace a defective product but rather issue to a purchaser a refund equal to the purchase price paid for the product or a credit to be used toward the purchase of a new Flarespace product.

This warranty excludes problems caused by normal wear and tear including, but not limited to, scratches, dents, tears, or aesthetic oxidation of surfaces, natural breakdown of colors and materials over extended time and use, commercial use, accidents, or unlawful vehicle operation. No warranty is given for defects resulting from conditions beyond Flarespace's control including, but not limited to, modifications or repairs not performed or authorized by Flarespace, misuse, overloading, or failure to assemble, install or use the product in accordance with Flarespace's written instructions or guidelines included with the product or made available to the purchaser originally.

Items purchased from dealers may either be returned to the place of purchase and they will facilitate your warranty or you may work directly with Flarespace. Warranties are non-transferable.

HOW DO I SUBMIT A WARRANTY CLAIM FOR WEB STORE PRODUCTS?

Email info@flarespace.com and include the following:

- When the product was purchased.
- What the issue is.
- Photo(s) of the product highlighting the area of issue.

We are available Mon - Fri from 9am-5pm MT, and will try to reply to your email within 2 business days.



nVader

BY [FLARESPACE]

INSTALLATION INSTRUCTIONS