

[FLARESPACE]

TENZING TRAILHEAD BRUSHGUARD

INSTALLATION INSTRUCTIONS

[FLARESPACE]

LET'S GO!

This is a fairly easy install and should take about 2 hours. You will need a trusty friend to help lift the Brushguard into place.

Extreme attention to detail with items fitting perfectly is a priority.

Please be sure to read this instruction manual in its entirety before installing the Brushguard. Safety glasses are strongly recommended. Take your time and be mindful with the tools as personal harm and/or damage is possible if you're not careful.

Only install this product with the supplied hardware as substituting or modifying hardware could damage your awesome rig.

Thank you for supporting the overlanding community. We are jealous that we can't join you out on the open road and beyond, but sincerely hope this product will enrich your experience.

-Your friends at Flarespace

PARTS INCLUDED:

1. (1) Tenzing Trailhead Brushguard
2. (2) M8 x40mm Bolts
3. (2) 8mm Flat Washers
4. (2) 8mm Plastic washers
5. (2) 5/16" aluminum spacers 5/8" in height
6. (2) 5/16" aluminum spacers 1/4" in height
7. (2) Front Sensor Mounts
8. (2) Front Cap Mounts (only needed for van without front sensors)
9. (2) Front License plate mounts
10. (2) Tow hook cover bolts
11. M5 Hex (Allen) wrench (used to remove red tow hook cover)

TOOLS NEEDED:

1. Flat Blade Screwdriver
2. File or Pine Cone Drill Bit
3. 1/2" Wrench (Ratcheting Box Wrench makes it easier)
4. 1/2" Socket
5. T 45 Socket
6. T 20 Socket (for European license plate adapter removal)
7. 2" Painters Tape
8. Alignment Tool
9. Loctite 242
10. (2) 3/8" size, 1" OD, high-temp PEEK plastic washers



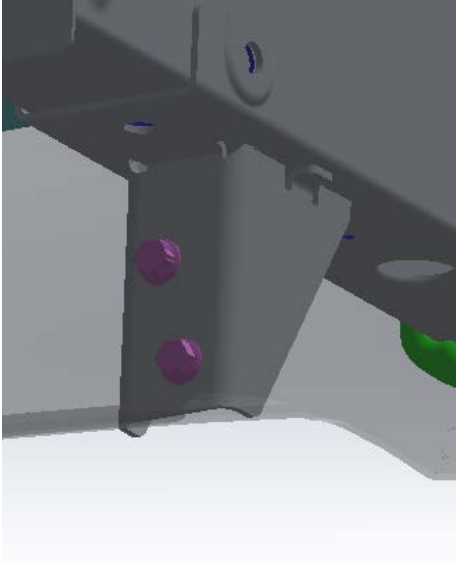
STEP 1:

Remove metal cross member and (4) factory bolts from underneath van using 1/2" wrench and socket.



NOTE: Save these bolts for use with Tenzing Trailhead Brushguard.

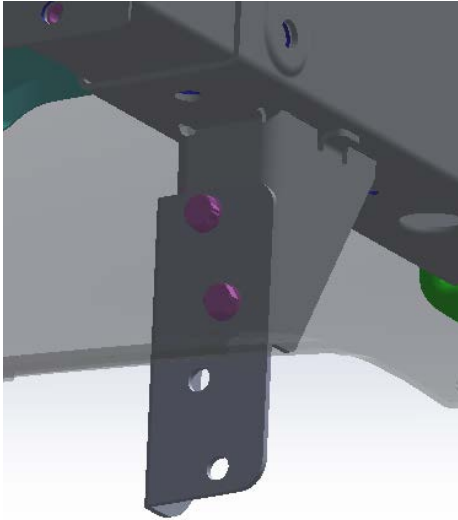
Discard the removed shown crossmember.



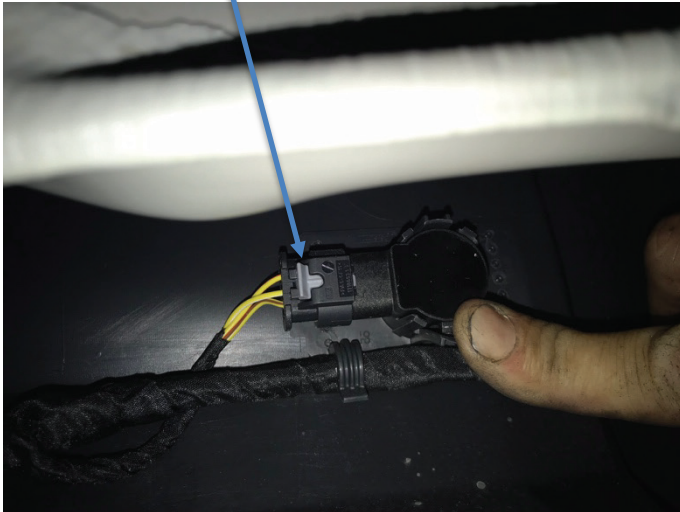
STEP 1A:

For Rear Wheel Drive Sprinters only.
Skip to step 2 if you are working on a 4 wheel drive or All Wheel Drive Sprinters.

To the frame areas that you removed the bracket from in STEP 1, attach the RWD adapter brackets as shown using the factory Mercedes hardware removed in STEP 1.



Slide this clip to left.



STEP 2:

From underneath the front bumper locate the (2) sensors on either side of the license plate frame.

Locate the white clip on each sensor and with a small flathead screw driver, carefully push this clip to the left. This will release the connector from the sensor. You will have to wiggle the connector free from the sensor.



Sensor

STEP 3:

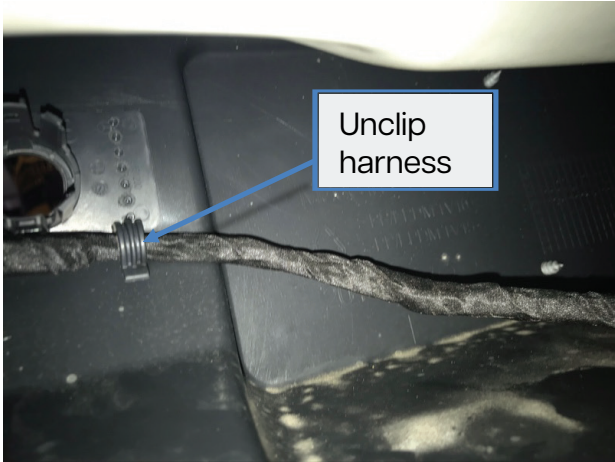
Unclip sensors from bumper and put in a safe place.



STEP 4:

Using a file or pine cone bit, carefully widen both sensor holes on original bumper just enough to bring the wire harness and connector back through original holes.

NOTE: Do not remove any more material than necessary.



STEP 5:

From underneath vehicle, unclip the wiring harness from the original bumper allowing the sensor connectors to obtain slack.



STEP 6:

Push the sensor connector through the hole you enlarged. Reconnect the sensors to the outlets and leave them hanging for now.

NOTE: Due to the short length of wiring harness the Driver side hole will need to be widened.



STEP 7:

Using a flat blade screwdriver, remove the plastic cover revealing the tow hook mounting hole. Attach factory tow hook to van and tighten into place with alignment tool.

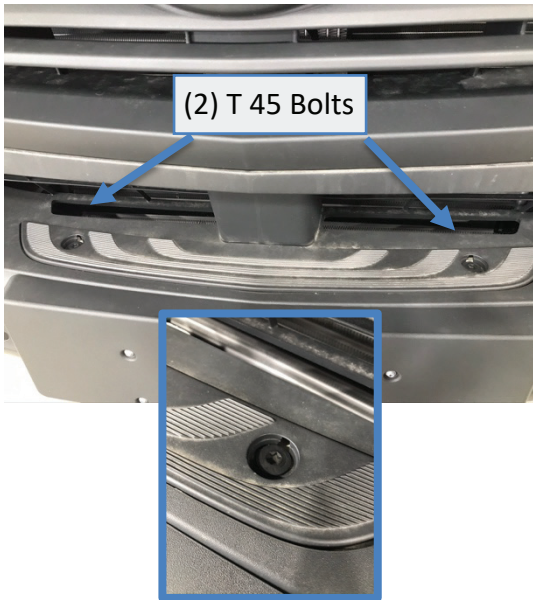
NOTE: Factory tow hook should be located underneath passenger side floor mat along with jack accessories.



STEP 8:

Prep original bumper on both sides as pictured using 2" automotive grade painters tape, Double up layers so the Mercedes bumper doesn't get scratched when installing TTB.

Tech Tip: You may also want to tape the lower portion of the Mercedes Emblem.



STEP 9:

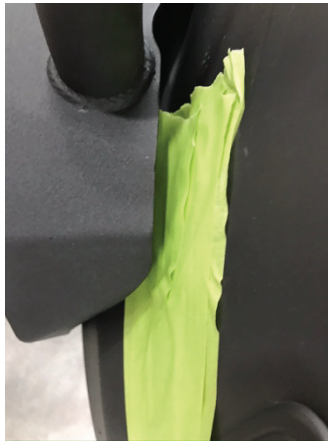
Remove (2) original T 45 Bolts located on top of original bumper.



STEP 10:

Install spacers into step holes. Each side gets both a 5/8" and 1/4" spacer.

NOTE: Parts kits may include washers rather than spacers. Simply stack the washers to create the spacing needed to keep the brushguard above the plastic step when installed.



STEP 11:

Have a friend help you lift the brushguard into place. Attach by hand tightening the two included M8 bolts, black plastic washers and Black flat washers. Adjust the bumper so that there is even spacing on both sides of the brushguard to the plastic bumper cover.



STEP 12:

Line up the (4) factory Mercedes bolts underneath to the Mercedes frame or to the previously installed RWD adapter brackets using the supplied M8x25mm bolts, washers and M8 nuts. Add Loctite 242 to all bolts and hand tighten.

NOTE: Push the plastic bumper upward from underneath to get to all (4) bolt locations .



STEP 13:

Inspect brushguard from top and adjust so that there is equal spacing on both sides of the brushguard in-between plastic Mercedes bumper cover and brushguard. Tighten all bolts when you are happy with the alignment.



Front Sensor



Sensor Hole Cover

STEP 14:

Insert front sensors into Brushguard from behind. There is very little slack for sensors, and little room for your hands, so be careful.

If you don't have front sensors, use the (2) plastic sensor hole covers.

**That's it, you are done! Congrats, you just finished the install.
Now you can enjoy the rewards and your rig has never looked better.**

YOUR WARRANTY

Subject to the limitations and exclusions described in this warranty, Flarespace will remedy defects in materials or workmanship by repairing or replacing, at its option, a defective product without charge for parts or labor. In addition, Flarespace may elect, at its option, not to repair or replace a defective product but rather issue to a purchaser a refund equal to the purchase price paid for the product or a credit to be used toward the purchase of a new Flarespace product.

This warranty excludes problems caused by normal wear and tear including, but not limited to, scratches, dents, tears, or aesthetic oxidation of surfaces, natural breakdown of colors and materials over extended time and use, commercial use, accidents, or unlawful vehicle operation. No warranty is given for defects resulting from conditions beyond Flarespace's control including, but not limited to modifications or repairs not performed or authorized by Flarespace, misuse, overloading, failure to assemble, install or use the product in accordance with Flarespace's written instructions or guidelines included with the product or made available to the purchaser originally.

Items purchased from dealers may either be returned to the place of purchase and they will facilitate your warranty or you may work directly with Flarespace. Warranties are non-transferable.

HOW DO I SUBMIT A WARRANTY CLAIM?

Email info@flarespace.com and include the following:

When the product was purchased, what the issue is, and photos of the product highlighting the area of issues.

We are available Monday - Friday from 9am-5pm MT, and will try to reply to your email within 2 business days or as soon as possible.



FLARESPACE.COM
COPYRIGHT © 2022
FLARESPACE, LLC. ALL
RIGHTS RESERVED