



GARAGE ORGANIZER (DRIVER SIDE)

INSTALLATION INSTRUCTIONS
for 2022+ only

Install Beast Soft Goods Driver Side Garage Organizer

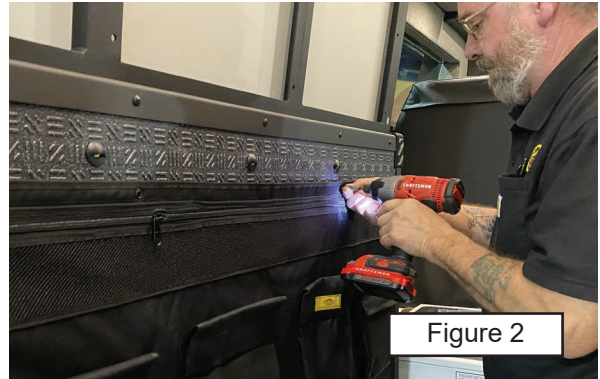
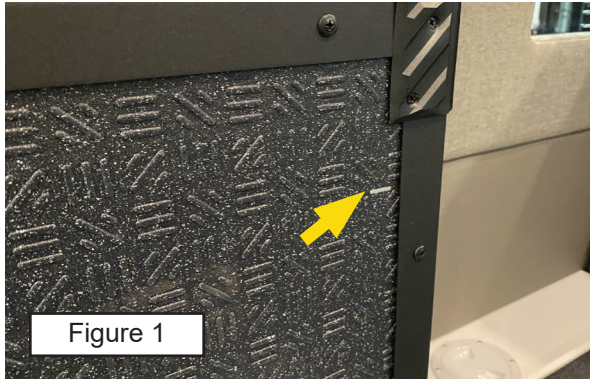
Parts /Hardware Needed	
Description	QTY:
Flarespace Garage Organizer	1
#8 x 3/4" Stainless Steel Wafer Screws	10
Silver Sharpie	Pen

Tools/Jigs Needed	
Description	QTY:
Mesuring Tape	1
Speed Square	1
Drill	1
#2 Phillips Bit	1
Screw Driver	1

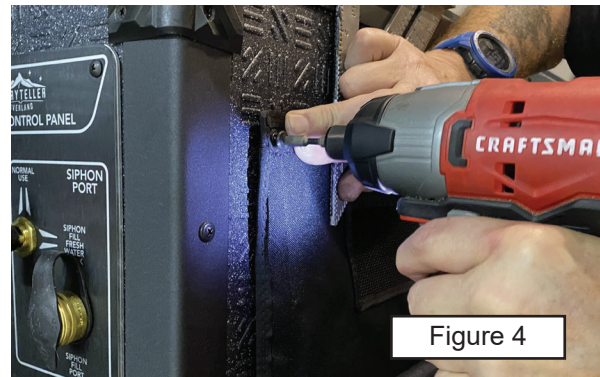
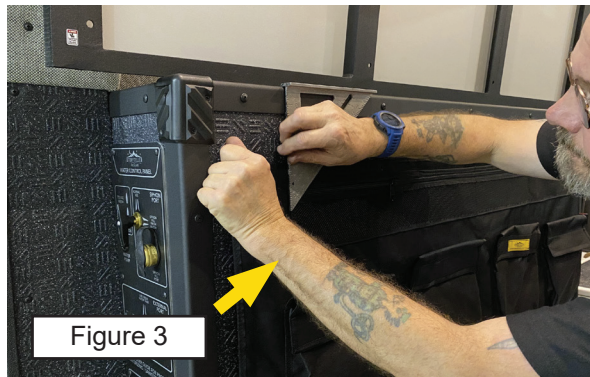
Install Beast Soft Goods Driver Side Garage Organizer

1. Install Driver Side Garage Organizer

a. With a speed square or tape measure mark a location down 4 3/4" from the top of the frame and 2 1/4" from the front of the frame. (Figure 1) Then use (1) 3/4" wafer screw and secure the screw in the top right corner of the driver side organizer. (Figure 2) It may be helpful to have a second set of hands hold the organizer when getting the first screw started.

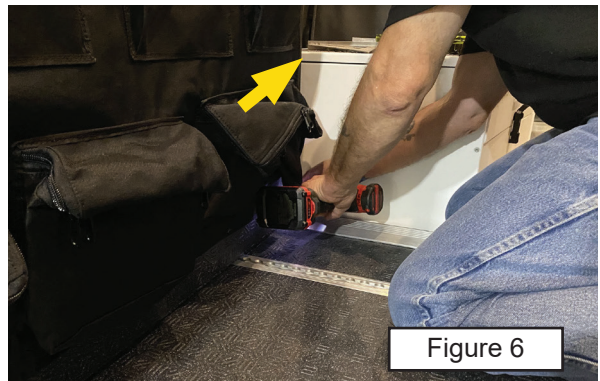
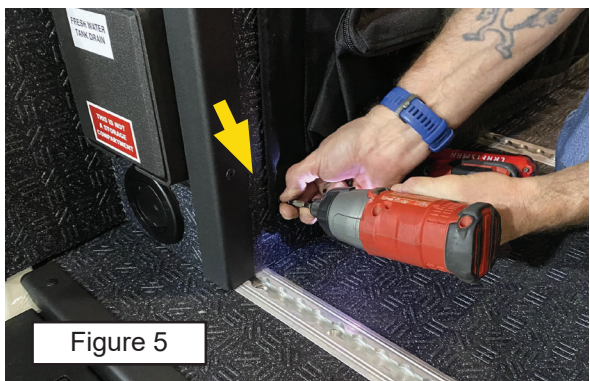


b. Then move to the opposite end of the organizer, near the back doors, use the speed square to align the grommet holes centered at the same 4 3/4" down. (Figure 3)



c. Secure the corner of organizer panel in place with a 3/4" wafer screw. (Figure 4)

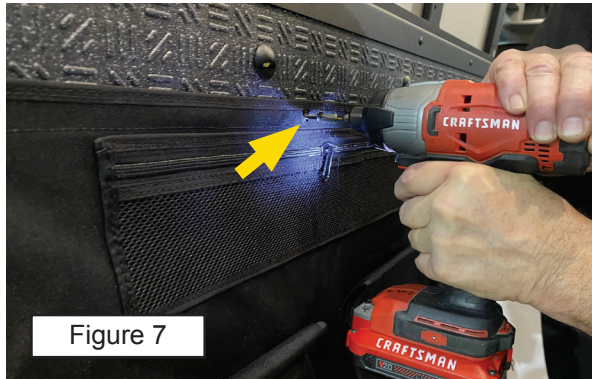
d. Tension the panel down to the lower back corner and secure in place using a 3/4" wafer screw. (Figure 5) Align the organizer with the front edge of the trim nearest the shower base and secure using a 3/4" wafer screw. (Figure 6)

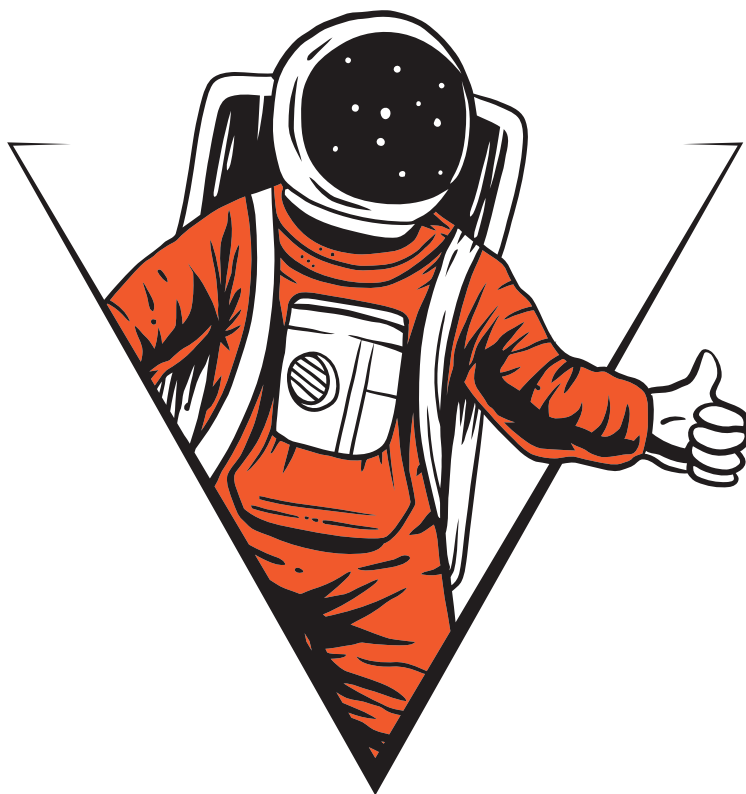


Install Beast Soft Goods Driver Side Garage Organizer

e. Install the remaining (6) wafer screws, making sure to keep the garage organizer tight against the panel and work back and forth or top to bottom. (Figure 7)

f. With the (10) wafer screws secured on the driver side garage organizer, the install is complete. (Figure 8)





FLARESPACE.COM
COPYRIGHT © 2022
FLARESPACE, LLC.
ALL RIGHTS RESERVED