



 **TRNDlabs**

USER GUIDE  
**HYDRA**  
Travel Steamer



[WWW.TRNDLABS.COM](http://WWW.TRNDLABS.COM)

**Thank you for purchasing the  
HYDRA Travel Steamer and  
welcome to the world of TRNDlabs  
products.**

The HYDRA is an easy-to-use travel steamer, that helps you keep your clothes wrinkle-free in no time. With its compact design, you can take it easily with you while traveling. It is heated up and ready to steam within 2 minutes!

# Table of Contents

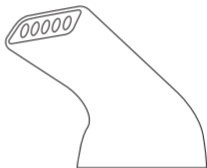
Parts Identification	5
Functions	6
Setup	7
How to Use	8
Specifications	10
Troubleshooting	11
Safety Information	13

# Parts Identification

Steamer

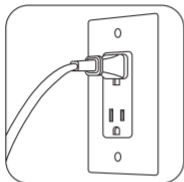


Nozzle

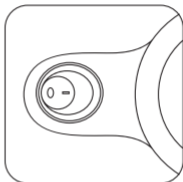


# Functions

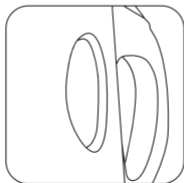
Plug



On/Off Button

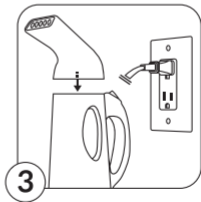
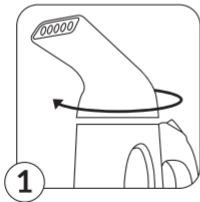


Water Tank



## Setup


- 1 Detach the nozzle on top of the HYDRA by turning it clockwise.
- 2 Fill it with clean, cold water. Make sure you do not exceed the maximum capacity.
- 3 Put the nozzle back on and plug it in.



## How to Use

- 1 Press the On/Off button and wait for approximately 2 minutes. After 2 minutes it will start steaming and you are ready to steam your clothes.
- 2 Hold the steamer about 6 inches away from the garment and gently move it back and forth over the fabric. Be sure to keep the steamer moving at all times.



- 
- For the best results, start at the top of the garment and work your way down.
  - If the HYDRA runs out of water, turn it off, refill the tank, and turn it on again.
  - When finished, turn the steamer off and allow it to cool down before emptying any remaining water from the tank.

## Specifications

<b>Heat Up Time:</b>	2 minutes
<b>Water Tank Capacity:</b>	150 ml (5.1 oz)
<b>Voltage:</b>	120V
<b>Power:</b>	800W
<b>Dimensions:</b>	21.0 x 13.5 x 18.5 cm
<b>Weight:</b>	486 grams (17.1 oz)

## Troubleshooting

**Problem:** The HYDRA fails to heat or no steam is coming from the nozzle.

*Solution:*

- It is connected to a power source with the wrong voltage. Solve this by plugging it into a 120V power outlet.
- There is no or insufficient water in the water tank. Fill the tank up to the maximum line.



**Problem:** Water sprays or gurgles out of the nozzle.

*Solution:*

- There is too much water in the water tank. Pour out water until the tank is filled up to the maximum line.
- There are water drops near the nozzle holes. Solve by holding the HYDRA vertically and shaking it gently, to allow the water to drain back into the tank.

**Problem:** The HYDRA is steaming intermittently.

*Solution:*

- Mineral build-up inside the tank and nozzle. Remove by following a descaling procedure, for example with vinegar.

## Safety information

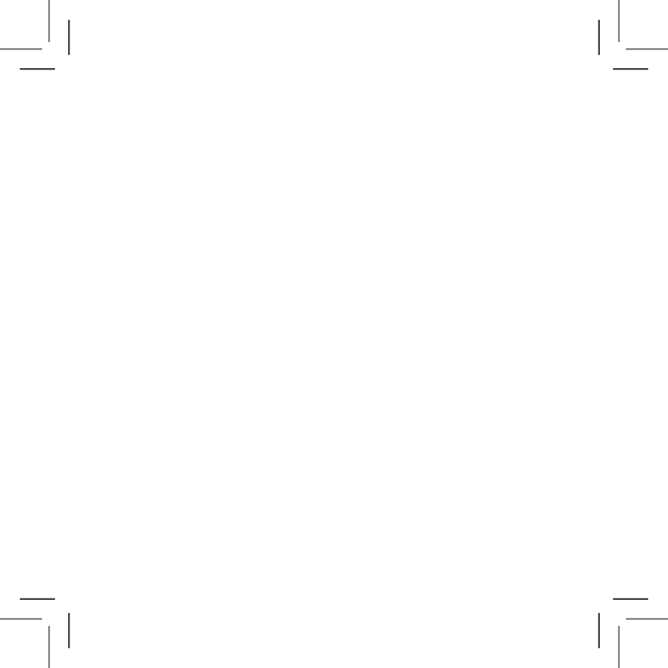
- Do not plug the device into a power source other than 120V. Using a power source with higher voltage will likely cause a short circuit.
- Unplug the device when not in use, when you refill the tank, or when you clean the device.
- Do not use the device where it is close to water, like a filled bathtub or a toilet.
- When the device falls into the water, unplug the device immediately. Do not try to grab the device.
- Do not point the device at a person, animal, or anything different than clothes at any time. Pointing it at a person may cause injury.
- Do not use to steam your clothes while wearing them.
- Safe to use by people above 18 years old.
- Do not use the device when the power cable is damaged.
- Do not use an extension cord with the device.



The contents of this document are subject to change.  
Download the latest version from  
[www.trndlabs.com](http://www.trndlabs.com).

If you have any questions about this document, please  
contact TRNDlabs by sending a message  
to [hello@trndlabs.com](mailto:hello@trndlabs.com).

© 2023 TRNDlabs. All rights reserved.





4044/1/EN