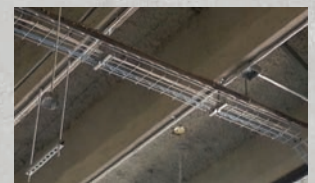
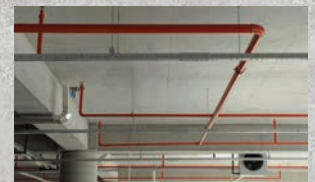




APPROVED FOR USE IN CRACKED AND UNCRACKED CONCRETE



National Code Compliant



ETA 21/0891 Approved



Cracked Concrete Approved



Fire Rated Fasteners



Australian Standards



ZINC INTERNAL

NEW



For multiple use non-structural applications

DLXTM-S DROP-IN ANCHOR is a single piece internally threaded expansion anchor suitable for solid base material and hollow core concrete available in a carbon steel clear zinc plated finish.

The anchor is set by displacement of the pre-assembled expander cone to enable full expansion of the anchor body. The anchor must be set with the correct ICCONS® setting tools (see page 2).

The lip feature ensures the anchor will mount flush with the concrete surface for consistency. The internal thread is suitable for machined bolts or threaded rod. The DLXTM-S Drop-In Anchor is ETA Assessed for redundant non-structural systems.

Part No.	Description	mm	mm	mm	qty	qty
DLXTM1025-S	M10 x 25mm Lip Drop-in Anchor Approved	12	28	M10	50	800
DLXTM1225-S	M12 x 25mm Lip Drop-in Anchor Approved	15	29	M12	50	800

DLXTM-S DROP-IN ANCHOR



Approved for use in cracked and uncracked concrete

TDS | 1042.2



Lip Drop-in Setting Tool

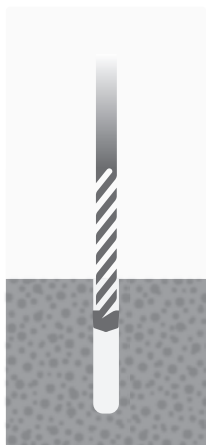
For use with Lip Drop-in Anchors.

Use of Setting Tool is necessary for the correct installation of Drop-in Anchors.

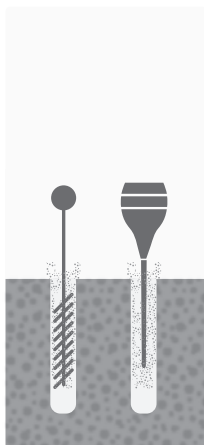


Part No.	Description	qty
DLST1025-S	M10 x 25mm Setting Tool - Soft Grip	1
DLST1225-S	M12 x 25mm Setting Tool - Soft Grip	1

INSTALLATION



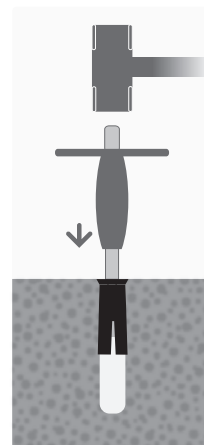
With the correct diameter drill bit, drill a hole to the correct depth.



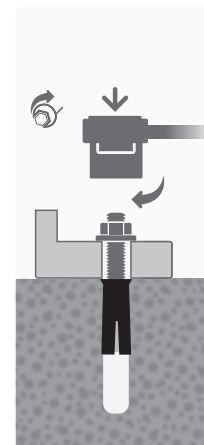
Clean dust and other material from the hole. Blow dust from the hole.



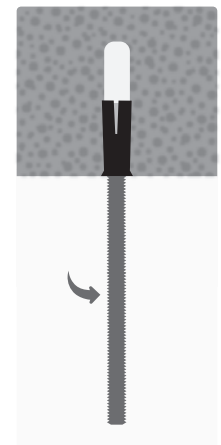
Push in Lip Drop-in by hand or by hammer blows, anchor should be flush to concrete surface.



Set the Lip Drop-in with setting tool. The Lip Drop-in is installed correctly if the setting tool pin is completely inside the anchor.



Place fixture in position and insert machined bolt and tighten until firm (do not exceed recommended torque).



For threaded rod installations wind in rod until firm, do not over tighten.

INSTALLATION DATA DLXTM-S DROP-IN ANCHOR

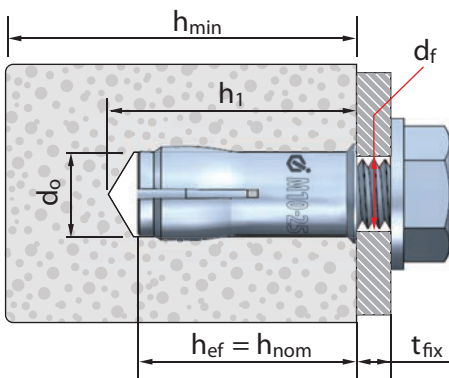
		M10 x 25mm	M12 x 25mm
Nominal Drill diameter	d_o	12	15
Internal Thread Diameter	M	10	12
Depth of Drill Hole	h_1	28	29
Distance b/w anchor and prestressing steel	a_p	50	50
Effective anchor depth	h_{ef}	25	25
Maximum thread depth	$L_{s,max}$	13	13
Minimum thread depth	$L_{s,min}$	8	10
Fixture clearance hole	d_f	12	14
Maximum installation torque	T_{inst}	17	38



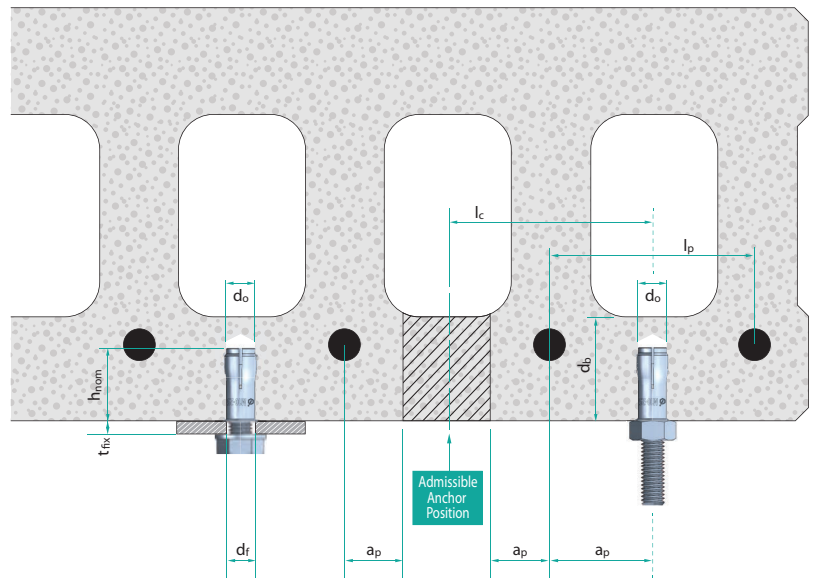
MATERIAL SPECIFICATIONS

Anchor Component	Steel
Body M10/M12	Carbon Steel, Zinc Plated $\geq 5\mu\text{m}$ ISO 4042
Expansion Cone	Carbon Steel, Zinc Plated $\geq 5\mu\text{m}$ ISO 4042
Retaining Disc	Paper or plastic

DLXTM-S -
For use in concrete
C20/25 to C50/60



DLXTM-S -
For use in precast prestressed hollow core slabs
With flange thickness $\geq 35\text{mm}$ and concrete C30/37
to C50/60



DLXTM-S Drop-in	
h_{\min}	= thickness of member
h_1	= depth of drilled hole
h_{ef}	= effective anchorage depth
t_{fix}	= fixture thickness
L_s	= length of thread inside the anchor
T_{inst}	= max. installation torque
d_f	= fixture clearance hole diameter

DLXTM-S Drop-in	
d_o	= nominal diameter of drill bit
$h_{\text{ef}} = h_{\text{nom}}$	= effective anchorage depth
L_s	= length of thread inside the anchor
T_{inst}	= max. installation torque
a_p	= distance between anchor and prestressing steel $\geq 50\text{mm}$
d_b	= bottom flange thickness
l_c	= core distance $\geq 100\text{mm}$
l_p	= prestressing steel spacing $\geq 100\text{mm}$
C_{\min}	= edge distance
d_f	= fixture clearance hole diameter



Minimum thickness of concrete member, spacing and edge distance

DLXTM-S Drop-in anchor			Size M10-25	Size M12-25
Minimum thickness of member	h_{min}	[mm]	80	80
Minimum spacing	S_{min}	[mm]	75	75
Minimum edge distance	C_{min}	[mm]	60	60

Minimum thickness, spacing and edge distance of precast prestressed hollow core slabs

DLXTM-S Drop-in anchor			Size M10-25	Size M12-25
Minimum thickness of member	h_{min}	[mm]	35	35
Minimum spacing	S_{min}	[mm]	200	200
Minimum edge distance	C_{min}	[mm]	150	150

Design Data in accordance with AS 5216:2021 (Redundant non-structural system only)

DLXTM-S Drop-in anchor - Any load direction				Size M10-25	Size M12-25
Characteristic resistance in concrete C20/25 - C50/60	F_{oRk}	[kN]	\geq Rod 4.6	4.0	4.0
Installation safety factor	γ_{inst}	[-]		1.2	1.2
Characteristic spacing	S_{cr}	[mm]		120	120
Characteristic edge distance	C_{cr}	[mm]		60	60
Design resistance in concrete C20/25 - C50/60	F_{oRd}	[kN]	\geq Rod 4.6	2.2 ⁽¹⁾	2.2 ⁽¹⁾

¹⁾ Load in any direction

Design Data for use in precast prestressed hollow core slabs with bottom flange thickness ≥ 35 mm

DLXTM-S Drop-in anchor - Any load direction				Size M10-25	Size M12-25
Characteristic resistance in concrete C30/37 - C50/60	F_{Rk}	[kN]		6.0	6.5
Installation safety factor	γ_{inst}	[-]		1.4	1.4
Spacing	$S_{cr} = S_{min}$	[mm]		200	200
Edge distance	$C_{cr} = C_{min}$	[mm]		150	150
Design resistance in concrete C30/37 - C50/60	F_{Rd}	[kN]	\geq Rod 4.6	2.9 ⁽¹⁾	3.1 ⁽¹⁾

¹⁾ Load in any direction

Characteristic values of resistance under fire exposure in any direction for use in concrete C20/25 to C50/60 (NOT for use in prestressed hollow slabs)

DLXTM-S Drop-in anchor - Fire resistance class				Size M10-25	Size M12-25	
R30	Characteristic resistance	$F_{Rk,fi}$	[kN]	\geq Steel 4.6	0.54	0.54
R60	Characteristic resistance	$F_{Rk,fi}$	[kN]	\geq Steel 4.6	0.54	0.54
R90	Characteristic resistance	$F_{Rk,fi}$	[kN]	\geq Steel 4.6	0.54	0.54
R120	Characteristic resistance	$F_{Rk,fi}$	[kN]	\geq Steel 4.6	0.43	0.43
DLXTM-S Drop-in anchor - Spacing and edge distance under fire exposure				Size M10-25	Size M12-25	
R30 - R120	Spacing distance	$S_{cr,fi}$	mm	100	100	
R30 - R120	Edge distance	$C_{cr,fi}$	mm	50	50	

ICCONS® PTY LTD

VICTORIA - HEAD OFFICE
383 Frankston Dandenong Rd,
Dandenong South,
Vic, 3175
P: **03 9706 4344**

NSW Branch

Unit A, 17 Seddon Street,
Bankstown,
New South Wales, 2200
P: **02 9791 6869**

QLD Branch

42-44 Nealdon Dr
Meadowbrook,
Queensland, 4131
P: **07 3200 6455**

FNQ Branch

41 Corporate Crescent
Garbutt,
Queensland, 4814
P: **07 2111 3453**

S.A Branch

29-31 Weaver Street,
Edwardstown,
South Australia 5039
P: **08 8234 5535**

W.A. Branch

90 Christable Way,
Landsdale,
Western Australia, 6065
P: **08 6305 0008**

NORTHERN TERRITORY

Unit 1, 14 Menmuir Street,
Winnellie,
Northern Territory 0820
P: **08 8947 2758**

NEW ZEALAND

Sesto Fasteners

5E Piermark Road,
Albany, Auckland,
New Zealand 0630
P: **+64 9415 8564**
E: sestofasteners@gmail.com

THAILAND

ICCONS (Thailand) Co. Ltd.
55 Phetkasem 62/3, Bangkokhae,
Bangkok 0160
P: **+ 66 2 801 0764**
F: **+ 66 2 801 0764**
M: **+ 66 8 1 710 8745**
E: icconsthailand@hotmail.com