

Troubleshooting

If the towel warmer is taking a long time to reach the optimal temperature, make sure that you are using only dry towels. Trying to heat damp towels will greatly extend the heating cycle.

Technical Specifications

Dimensions: 12.6" x 12.6" x 13.4" (320.9 x 320.9 x 340.4 mm)

Voltage: 120 V AC

Hertz: 60 Hz

Wattage Max: 220 W

Capacity: 0.35 ft³. (10 L)

LIMITED WARRANTY ON LIVEFINE® TOWEL WARMER

THIS LIMITED WARRANTY GIVES YOU SPECIFIC LEGAL RIGHTS AND YOU MAY ALSO HAVE OTHER RIGHTS, WHICH VARY FROM STATE TO STATE.

WE WARRANT THAT DURING THE WARRANTY PERIOD, THE PRODUCT WILL BE FREE FROM DEFECTS IN MATERIALS AND WORKMANSHIP.

LIMITATION OF LIABILITY

TO THE EXTENT NOT PROHIBITED BY LAW, THIS WARRANTY IS EXCLUSIVE AND IN LIEU OF ALL OTHER WARRANTIES, ORAL, WRITTEN, STATUTORY, EXPRESS OR IMPLIED. EXCEPT FOR THE EXPRESS WARRANTIES CONTAINED IN THIS LIMITED WARRANTY STATEMENT AND TO THE EXTENT NOT PROHIBITED BY LAW, WE DISCLAIM ALL OTHER WARRANTIES, EXPRESSED OR IMPLIED, STATUTORY OR OTHERWISE, INCLUDING WITHOUT LIMITATION, THE WARRANTIES OF MERCHANTABILITY AND FITNESS FOR A PARTICULAR PURPOSE. SOME STATES DO NOT ALLOW DISCLAIMERS OF IMPLIED WARRANTIES, SO THIS DISCLAIMER MAY NOT APPLY TO YOU. TO THE EXTENT SUCH WARRANTIES CANNOT BE DISCLAIMED UNDER THE LAWS OF YOUR JURISDICTION, WE LIMIT THE DURATION AND REMEDIES OF SUCH WARRANTIES TO THE DURATION OF THIS EXPRESS LIMITED WARRANTY.

OUR RESPONSIBILITY FOR DEFECTIVE GOODS IS LIMITED TO REPAIR, REPLACEMENT OR REFUND AS DESCRIBED BELOW IN THIS WARRANTY STATEMENT.

WHO MAY USE THIS WARRANTY? C&A Marketing, Inc. located at 114 Tived Lane East, Edison, NJ ("we") extend this limited warranty only to the consumer who originally purchased the product ("you"). It does not extend to any subsequent owner or other transferee of the product.

WHAT DOES THIS WARRANTY COVER? This limited warranty covers defects in materials and workmanship of the LiveFine® Towel Warmer (the "product") for the Warranty Period as defined below.

WHAT DOES THIS WARRANTY NOT COVER? This limited warranty does not cover any damage due to: (a) transportation; (b) storage; (c) improper use; (d) failure to follow the product instructions or to perform any preventive maintenance; (e) modifications; (f) unauthorized repair; (g) normal wear and tear; or (h) external causes such as accidents, abuse, or other actions or events beyond our reasonable control.

WHAT IS THE PERIOD OF COVERAGE? This limited warranty starts on the date of your purchase and lasts for one year (the "Warranty Period"). The Warranty Period is not extended if we repair or replace the product. We may change the availability of this limited warranty at our discretion, but any changes will not be retroactive.

WHAT ARE YOUR REMEDIES UNDER THIS WARRANTY? With respect to any defective product during the Warranty Period, we will, at our sole discretion, either: (a) repair or replace such product (or the defective part) free of charge or (b) refund the purchase price of such product if an exchange unit cannot be provided.

HOW DO YOU OBTAIN WARRANTY SERVICE? To obtain warranty service, you must contact us at 1-888-390-7622 or by email at supportlfc@camarketing.com during the Warranty Period to obtain a Defective Merchandise Authorization ("DMA") number. No warranty service will be provided without a DMA number and return shipping costs to our facilities shall be assumed by you, the purchaser. Shipping costs of the replacement unit to you shall be assumed by us.



TOWEL WARMER

User Guide

LFHTTWL02

LIVEFINE is a trademark of C&A IP Holdings, LLC in the US.

All other products, brand names, company names, and logos are trademarks of their respective owners, used merely to identify their respective products, and are not meant to connote any sponsorship, endorsement or approval.

Distributed by C&A Marketing, Inc., 114 Tived Lane East, Edison, NJ 08837. Made in China.

© 2020. C&A IP Holdings, LLC. All Rights Reserved.



NEED HELP?

If you experience any problems with your LiveFine® Towel Warmer, please contact us at supportlfc@camarketing.com or 888-390-7622 before returning your product to the place of purchase.

WE'RE HERE TO HELP!

Thank you for purchasing the LiveFine® Towel Warmer. This User Guide is intended to provide you with guidelines to ensure that operation of this product is safe and does not pose risk to the user. Any use that does not conform to the guidelines described in this User Guide may void the limited warranty.

Please read all directions before using the product and retain this guide for reference. This product is intended for household use only. It is not intended for commercial use.

This product is covered by a limited one-year warranty. Coverage is subject to limits and exclusions. See warranty for details.

Safety Precautions

1. **⚠️ WARNING: CHOKING HAZARD – Small parts. This product contains small parts and is not suitable for children under 3 years old.**
2. Remove all packaging before using this device. Please keep all packaging materials out of reach of children and pets.
3. Properly dispose of all packing materials immediately after unpacking product, as the bags used for packaging could present a suffocation or choking hazard.
4. Read all instructions carefully before attempting to operate this device. Improper usage could result in a reduction in efficacy.
5. Always unplug this appliance from the electrical outlet immediately after using and before cleaning.
6. Do not immerse the unit in water or use outdoors.
7. Do not place or store appliance where it can fall or be pulled into a tub or sink.
8. Do not place in, or drop into, water or other liquids.
9. If an appliance falls into water, unplug it immediately. Do not reach into the water.
10. Do not use this unit to warm wet items; warm dry items only. Placing soaking wet items in the appliance could damage the product or create the risk of electrical shock.
11. Never operate if air openings are blocked. Keep the openings free of hair, lint, and dust.
12. Never drop or insert any object into any opening.
13. Keep away from flammable substances and heat sources.
14. Do not leave unit unattended while in use.
15. Surfaces may become hot; avoid touching them as they could cause injury.
16. Never operate this appliance if it has a damaged cord or plug, if it is not working properly, if it has been dropped or damaged, or dropped into water. Return the appliance to a service center for examination and repair.
17. This unit contains no user-serviceable parts. Do not disassemble or attempt to repair it. Doing so may void your warranty and cause damage or injury.

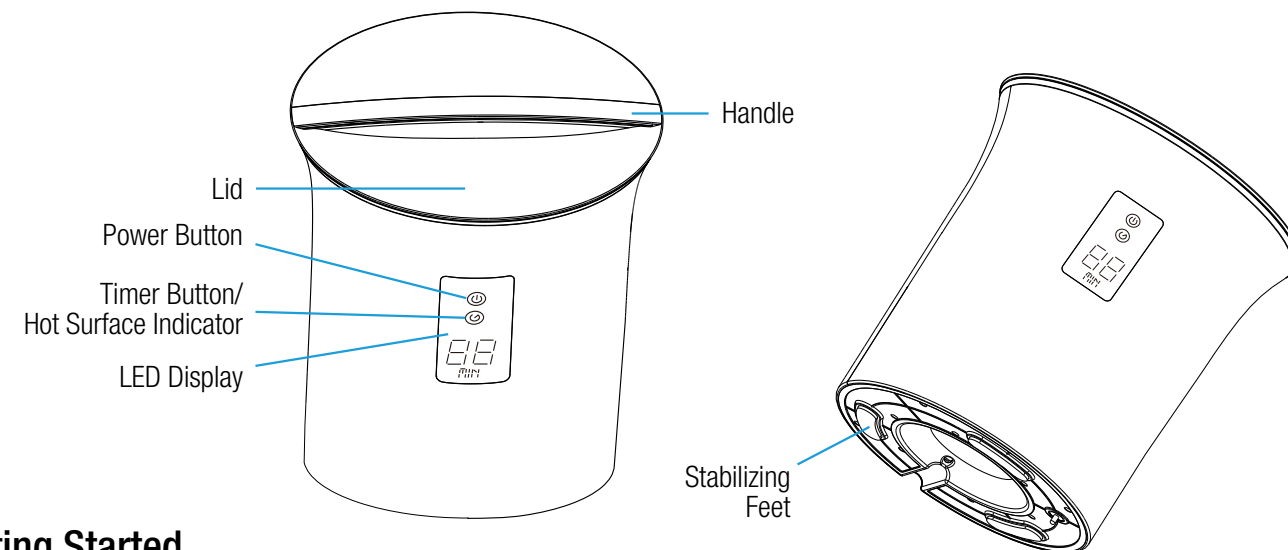
Package Contents

- Towel Warmer
- Lid
- User Guide

Features

- Warms two bath sheets at a time
- Timer lets you select 15, 30, 45, or 60 minutes of heat

Get to Know Your Towel Warmer



Getting Started

1. Open the lid and remove any contents.
2. Place the unit on a dry, level surface.
3. Insert the plug into a standard 120 V AC outlet.
4. Your towel warmer is now ready to use.

How to Use Your Towel Warmer

Please note:

- Your towel warmer will warm two bath sheets measuring up to 40" x 70" each. For best results, use 100% cotton or cotton blend towels.
- When the Hot Surface Indicator light is illuminated, the inside surfaces of the towel warmer are hot. Handle with care.
- It is normal for some condensation to form on the lid of the towel warmer.
- Do not use the towel warmer to dry wet items.
- Only use the towel warmer to warm fabrics.
- To clean the towel warmer, unplug and wipe with a dry cloth. Do not use detergents or harsh chemicals.

To warm towels:

1. Plug in the towel warmer.
2. Remove the lid and place your dry, **loosely** folded towels inside.
NOTE: If towels are tightly folded, they may not warm as well.
3. Replace the lid.
4. Press and hold the Power Button until the Timer Led on the LED Display illuminates. This will automatically select a 15-minute heating time. To adjust the heating time:
 - a. Press the Timer Button again for 30 minutes.
 - b. Press once again for 45 minutes.
 - c. Press once more for 60 minutes.
 - d. Press again to cycle back to 15 minutes.
5. The towel warmer will continue to maintain the optimal temperature for the remainder of the time you have set.
6. The towel warmer will automatically shut off after your selected amount of time has expired. To turn the towel warmer off manually, press the power button.