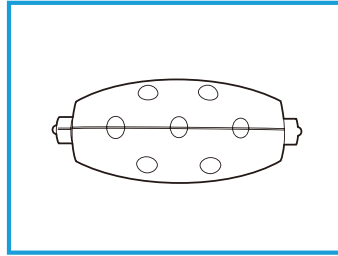


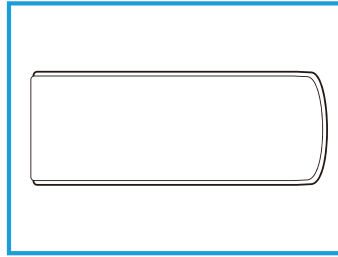
Using the Massage Rollers

- Press the Massage Rollers securely into their holders in the Foot Spa.
- Roll your feet over them for a kneading massage.



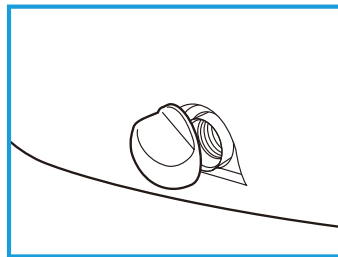
Using the Pumice Stone

- You can rub your feet over the Pumice Stone while it is in the Pumice Stone Holder.
- If you prefer, you can also remove it and use it manually.



Draining Water from the Foot Spa

1. Ensure the Foot Spa is off and unplugged.
2. Place over bathtub or sink.
3. Unscrew the Water Stopper and drain the water out through the Water Drain. Towel dry the Foot Spa.
4. Wind the power cord around the Cord Wrap underneath the Foot Spa.



Cleaning the Foot Spa

- Unplug and allow Foot Spa to cool before cleaning.
- Do not use scouring cleaning agents, benzene, kerosene, or cleaning agents made for glass or furniture. Clean only with a soft, damp cloth. Do not use a brush.
- The Pumice Stone and Splash Cover can be removed and cleaned separately in a dishwasher or by hand using soap and warm water.

Technical Specifications

Weight: 13 lbs.
Capacity: Comfortably fits up to a Men's Size 14.
Voltage: 120VAC
Hertz: 60 Hz
Wattage Max: 1,000W
Power Source: Power cord

LIMITED WARRANTY ON LIVEFINE® FOOT SPA

THIS LIMITED WARRANTY GIVES YOU SPECIFIC LEGAL RIGHTS AND YOU MAY ALSO HAVE OTHER RIGHTS, WHICH VARY FROM STATE TO STATE.

WE WARRANT THAT DURING THE WARRANTY PERIOD, THE PRODUCT WILL BE FREE FROM DEFECTS IN MATERIALS AND WORKMANSHIP.

LIMITATION OF LIABILITY

TO THE EXTENT NOT PROHIBITED BY LAW, THIS WARRANTY IS EXCLUSIVE AND IN LIEU OF ALL OTHER WARRANTIES, ORAL, WRITTEN, STATUTORY, EXPRESS OR IMPLIED. EXCEPT FOR THE EXPRESS WARRANTIES CONTAINED IN THIS LIMITED WARRANTY STATEMENT AND TO THE EXTENT NOT PROHIBITED BY LAW, WE DISCLAIM ALL OTHER WARRANTIES, EXPRESSED OR IMPLIED, STATUTORY OR OTHERWISE, INCLUDING WITHOUT LIMITATION, THE WARRANTIES OF MERCHANTABILITY AND FITNESS FOR A PARTICULAR PURPOSE. SOME STATES DO NOT ALLOW DISCLAIMERS OF IMPLIED WARRANTIES, SO THIS DISCLAIMER MAY NOT APPLY TO YOU. TO THE EXTENT SUCH WARRANTIES CANNOT BE DISCLAIMED UNDER THE LAWS OF YOUR JURISDICTION, WE LIMIT THE DURATION AND REMEDIES OF SUCH WARRANTIES TO THE DURATION OF THIS EXPRESS LIMITED WARRANTY.

OUR RESPONSIBILITY FOR DEFECTIVE GOODS IS LIMITED TO REPAIR, REPLACEMENT OR REFUND AS DESCRIBED BELOW IN THIS WARRANTY STATEMENT.

WHO MAY USE THIS WARRANTY? C&A Marketing, Inc. located at 114 Tived Lane East, Edison, NJ ("we") extend this limited warranty only to the consumer who originally purchased the product ("you"). It does not extend to any subsequent owner or other transferee of the product.

WHAT DOES THIS WARRANTY COVER? This limited warranty covers defects in materials and workmanship of the LiveFine® Foot Spa (the "product") for the Warranty Period as defined below.

WHAT DOES THIS WARRANTY NOT COVER? This limited warranty does not cover any damage due to: (a) transportation; (b) storage; (c) improper use; (d) failure to follow the product instructions or to perform any preventive maintenance; (e) modifications; (f) unauthorized repair; (g) normal wear and tear; or (h) external causes such as accidents, abuse, or other actions or events beyond our reasonable control.

WHAT IS THE PERIOD OF COVERAGE? This limited warranty starts on the date of your purchase and lasts for one year (the "Warranty Period"). The Warranty Period is not extended if we repair or replace the product. We may change the availability of this limited warranty at our discretion, but any changes will not be retroactive.

WHAT ARE YOUR REMEDIES UNDER THIS WARRANTY? With respect to any defective product during the Warranty Period, we will, at our sole discretion, either: (a) repair or replace such product (or the defective part) free of charge or (b) refund the purchase price of such product if an exchange unit cannot be provided.

HOW DO YOU OBTAIN WARRANTY SERVICE? To obtain warranty service, you must contact us at 1-888-390-7622 or by email at supportlfc@camarketing.com during the Warranty Period to obtain a Defective Merchandise Authorization ("DMA") number. No warranty service will be provided without a DMA number and return shipping costs to our facilities shall be assumed by you, the purchaser. Shipping costs of the replacement unit to you shall be assumed by us.

Get in Touch!

supportlfc@camarketing.com

1-888-390-7622

LIVEFINE is a trademark of C&A IP Holdings, LLC in the US.
All other products, brand names, company names, and logos are trademarks of their respective owners, used merely to identify their respective products, and are not meant to connote any sponsorship, endorsement or approval.
Distributed by C&A Marketing, Inc., 114 Tived Lane East, Edison, NJ 08837. Made in China.
© 2019. C&A IP Holdings, LLC. All Rights Reserved.



FOOT SPA

User Guide
LFFTSPAJET



NEED HELP?

If you experience any problems with your LiveFine® Foot Spa, please contact us at supportlfc@camarketing.com or 888-390-7622 before returning your product to the place of purchase.

WE'RE HERE TO HELP!

Thank you for purchasing the LiveFine® Foot Spa. This User Guide is intended to provide you with guidelines to ensure that operation of this product is safe and does not pose risk to the user. Any use that does not conform to the guidelines described in this User Guide may void the limited warranty.

Please read all directions before using the product and retain this guide for reference. This product is intended for household use only. It is not intended for commercial use.

This product is covered by a limited one-year warranty. Coverage is subject to limits and exclusions. See warranty for details.

Safety Precautions

WARNING: DO NOT USE THE FOOT SPA WITHOUT WATER.

- ⚠ WARNING: CHOKING HAZARD – Small parts. This product contains small parts and is not suitable for children under 3 years old.**
- Remove all packaging before using this device. Please keep all packaging materials out of reach of children and pets.
- Properly dispose of all packing materials immediately after unpacking product, as the bags used for packaging could present a suffocation or choking hazard.
- Read all instructions carefully before attempting to operate this device. Improper usage could result in injury or a reduction in efficacy.
- Always unplug this appliance from the electrical outlet immediately after using and before cleaning.
- This appliance should never be left unattended when plugged in. Unplug from outlet when not in use, and before putting on or taking off parts.
- Do not operate under a blanket or pillow. Excessive heating can occur and cause fire, electric shock, or injury.
- Close supervision is necessary when this appliance is used by, on, or near children or disabled persons.
- Use this appliance only for its intended use as described in the manual. Do not use attachments not recommended by the manufacturer.
- Never operate this appliance if it has a damaged cord or plug, if it is not working properly, if it has been dropped or damaged, or dropped into water. Return the appliance to a service center for examination and repair.
- Do not carry this appliance by its cord.
- Keep the cord away from heated surfaces.
- Never operate if air openings are blocked. Keep the openings free of hair, lint, and the like.
- Never drop or insert any object into any opening.
- Do not use outdoors.
- Do not operate where aerosol products are being used or oxygen is being administered.
- To disconnect, turn all controls to the off position, then remove plug from outlet.
- Do not stand on or in appliance. Use only while seated.

Health Precautions

- Consult your doctor before use if you: are pregnant, have a pacemaker, suffer from diabetes, phlebitis, or thrombosis, or are at an increased risk of developing blood clots due to recent surgery.
- Use should be pleasant and comfortable. If pain or discomfort occurs, discontinue use and consult your doctor.
- Do not use while sleeping or feeling drowsy.
- Avoid use if your feet are swollen, inflamed, or have any skin eruptions.
- This Foot Spa has a hot surface. If you are sensitive to heat, be careful during use.
- Connect to a properly grounded outlet only.
- Do not handle the plug if your hands are wet.

Package Contents

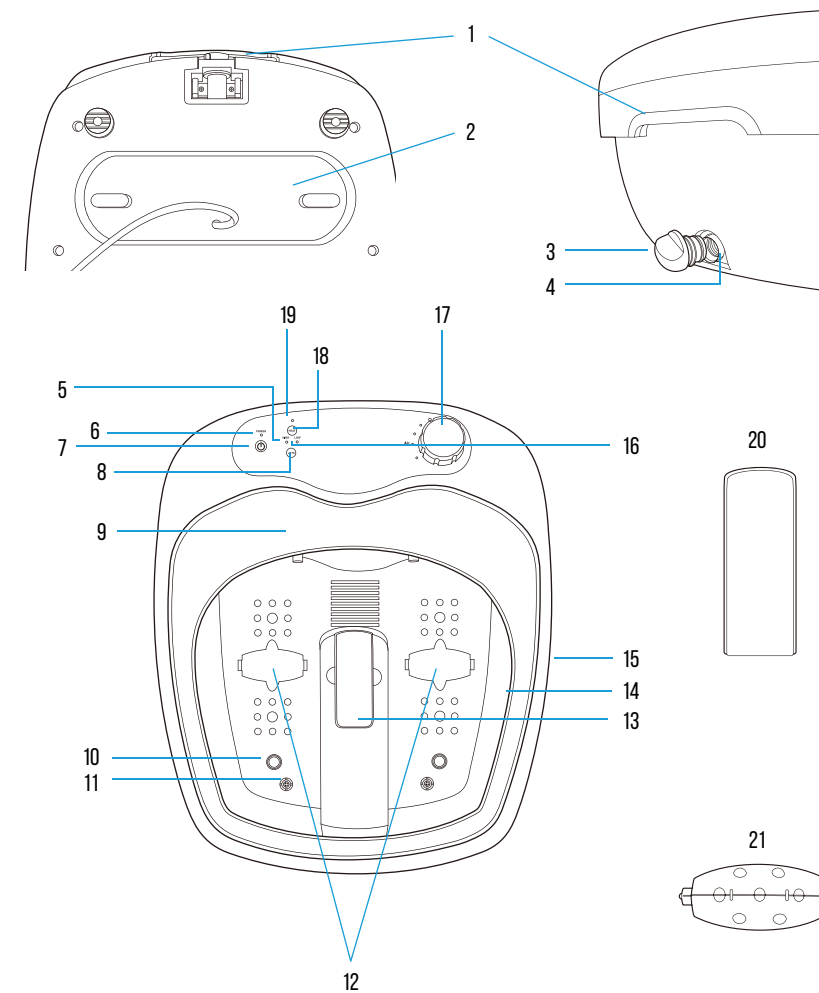
- Foot Spa
- Massage Rollers
- Pumice Stone

Features

- Powerful jets and targeted massage for the soles of your feet.
- Heat feature keeps water warm throughout your session.
- Two massage rollers soothe arches and stimulate reflexology zones.
- Pumice stone helps remove dry skin.
- Oversize tub with cover prevents splashing.

Get to Know Your Foot Spa

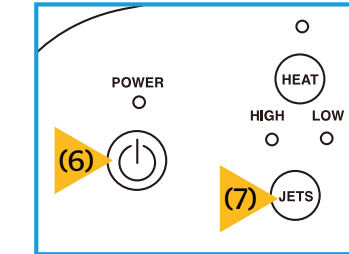
- Carrying Handles
- Cord Wrap
- Water Stopper
- Water Drain
- High Indicator
- Power Indicator
- Power Button
- Jet Button
- Rotatable Aqua Jets
- Water Sensors
- Air Holes
- Massage Node Holders
- Pumice Stone Holder
- Water Filling Line
- Splash Cover
- Low Indicator
- Air Knob
- Heat Button
- Heat Indicator
- Pumice Stone
- Massage Rollers



How to Use Your Foot Spa

Getting Started

- Make sure the Foot Spa is unplugged and turned off.
- Remove the Splash Cover.
- Fill with water up to the Max Fill Line. Do not exceed Max Fill Line.
- Replace Splash Cover.
- DO NOT ADD BATH SALTS, OILS, OR CRYSTALS TO THE WATER. Residue may build up and clog Air Holes.**
- Once the Foot Spa is filled, plug it in and turn on the Power Button. The Power indicator light will illuminate.
- The Aqua Jets will activate on Low. To change between Low and High speeds, press the Jets Button. The High or Low indicator light will illuminate for your desired speed.

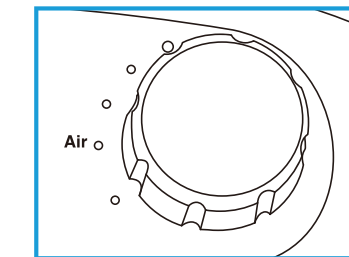


- To turn the Foot Spa off, press the Power Button again.

Note: If the Water Sensors do not detect the presence of water, the Foot Spa will not activate.

Adjusting Airflow

- Turn Air knob clockwise to increase the airflow from the Aqua Jets.
- Turn counterclockwise to decrease the airflow.



Using the Heat Feature

- Press the Heat Button.
- The Heat indicator light will illuminate.
- To turn off, press the Heat Button again.
- Heat feature can only be used when the Foot Spa is filled with water and the Aqua Jets are turned on.
- Heat will remain on for 30 minutes before shutting off automatically. To restart, press the Heat Button.
- For best results, fill the unit with room temperature (or warmer) water.

