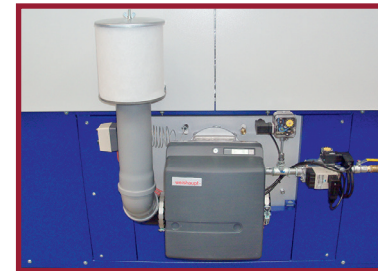
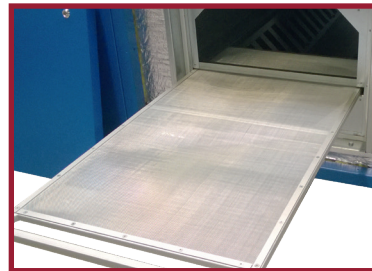


tesoma

compact three

compact three

 Made in Germany



Corporate Headquarters
9825 85th Avenue North
Maple Grove, MN 55369
tel. 763-391-7390

Mid Central States, KS
7943 Flint Street Bldg. 11
Lenexa, KS 66214
tel: 913-541-8304

South Central States, TX
345 Exchange Drive
Arlington, TX 76011
tel: 817-861-3464

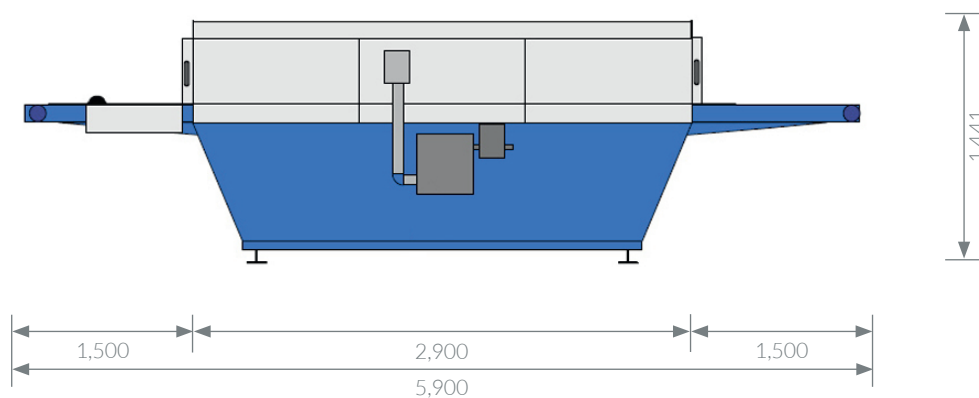
Mid Atlantic, OH
4860 Duff Drive - Suite B,
West Chester, OH 45246
tel: 859-568-2180

equipment. supplies. solutions. delivered.

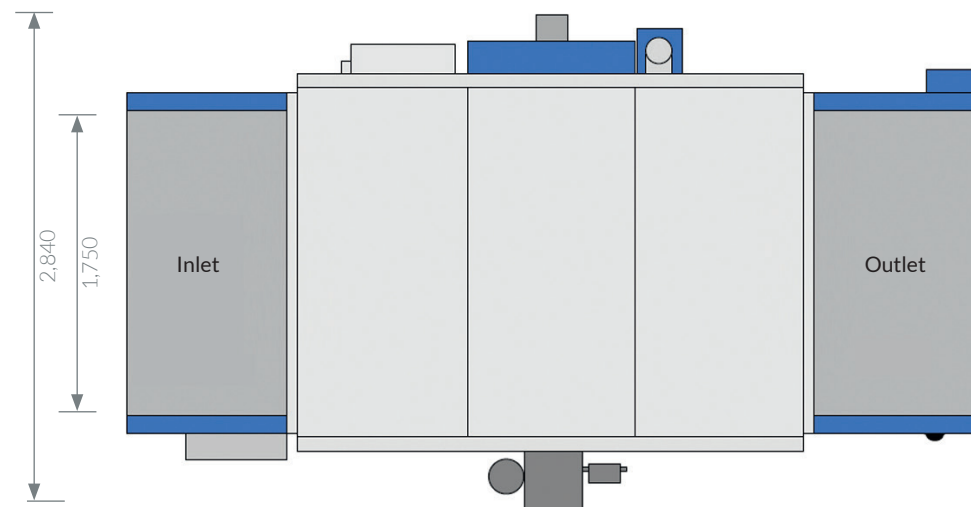
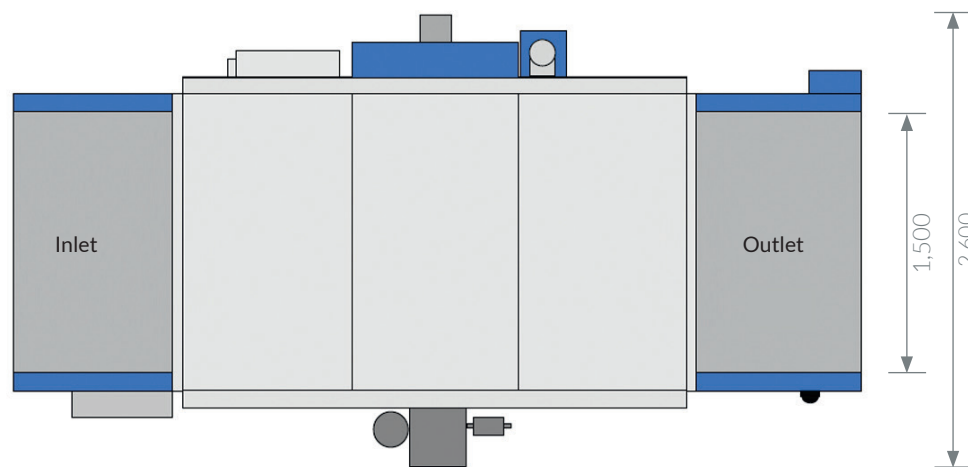
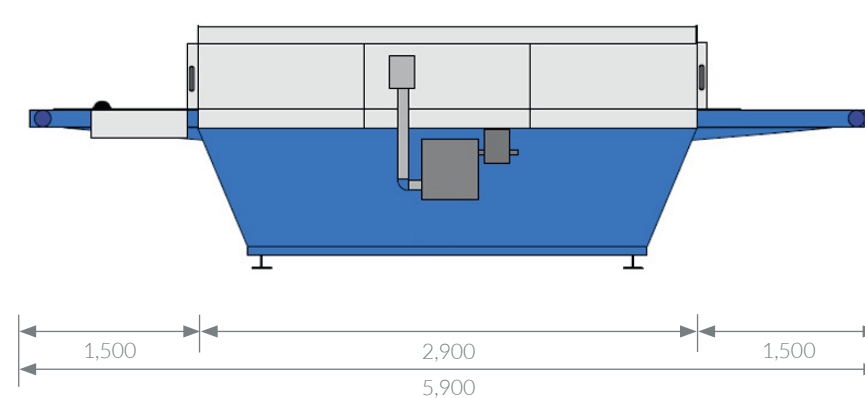
spsi.com

The illustrations shows the version with gas operation. All dimensions in mm.

1,500 mm belt width



1,750 mm belt width



Fast, but gentle drying with high air volume ensures optimum process reliability!

Application example 1
Plastisol print on cotton bags

Application example 2
Water based colors on cotton bags

Application example 3
Digital print on sweater

Capacity **720 pieces/hour** on 2 tracks

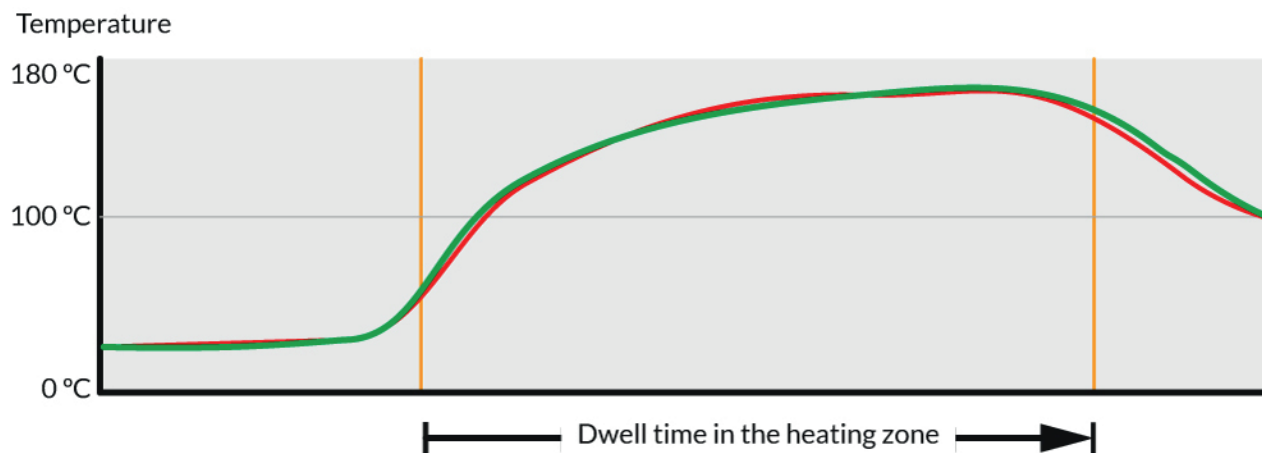
360 pieces/hour on 2 tracks

120 pieces/hour on 2 tracks

Dwell time in the heating zone **60 seconds**, 180 °C hot air (without infrared)

120 seconds, 170 °C hot air (without infrared)

360 seconds, 170 °C hot air (without infrared)



Exemplary schema
Sensor red = right bag, Sensor green = left bag



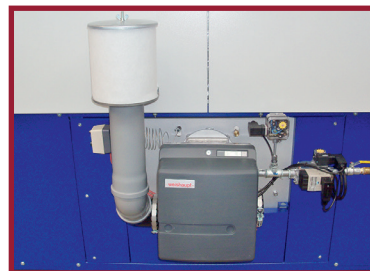
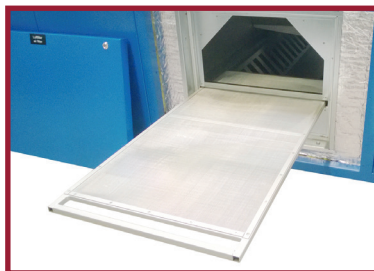
Belt width:	1,500 mm or 1,750 mm
Transport height:	950 +/- 25 mm
Tunnel height:	The nozzle distance to the conveyor belt is 100 mm
Transport:	Transport on fiberglass-coated glass fibre belt, mesh size 4 x 4 mm, kevlar spiral fastener, stainless steel closing wire, belt speed control via touch screen panel
Dwell time in the heating zone:	Stepless adjustable from 45 sec. - 7 min. for screen printing applications Stepless adjustable from 90 sec. - 15 min. for digital printing applications
Heating:	<u>Electrical version:</u> Heating with electrical resistance heaters, hot air temperature 50 °C up to 180 °C <u>Gas version:</u> Heating with Weishaupt type WG 10 N/0-D gas burner, max. 55 kW, hot air temperature 100 °C up to 180 °C



Configuration

Inlet:	1,500 mm
Heating zone:	2,900 mm
Outlet:	1,500 mm
Total length:	5,900 mm

- Filter:** Recirculation system with lint filter made of stainless steel, easily accessible from the outside.
- Control:** Operation via Raspberry PI with comfortable touch panel. Easy access to the dryer via remote control. Stepless of belt speed regulation and control of hot air temperature. Regulation of the air volume by an easy-to-use control handle.
- Operating safety and responsibility:** Easily accessible emergency stop buttons on the in- and outlet. Temperature monitoring with safety temperature limiter prevents damage due to overheating. Display of the operating status by signal light.
- Exhaust:** Exhaust air extraction on the back side with differential pressure sensor.
- Maintenance:** Access to the dryer interior via side cover, removable protective cover, filter accessible from the outside.
- General:** The average temperature on the outside surface is 25 °C at 20 °C room temperature. Maximum 50 °C. Total acoustic emission approx. 74 dB (A)

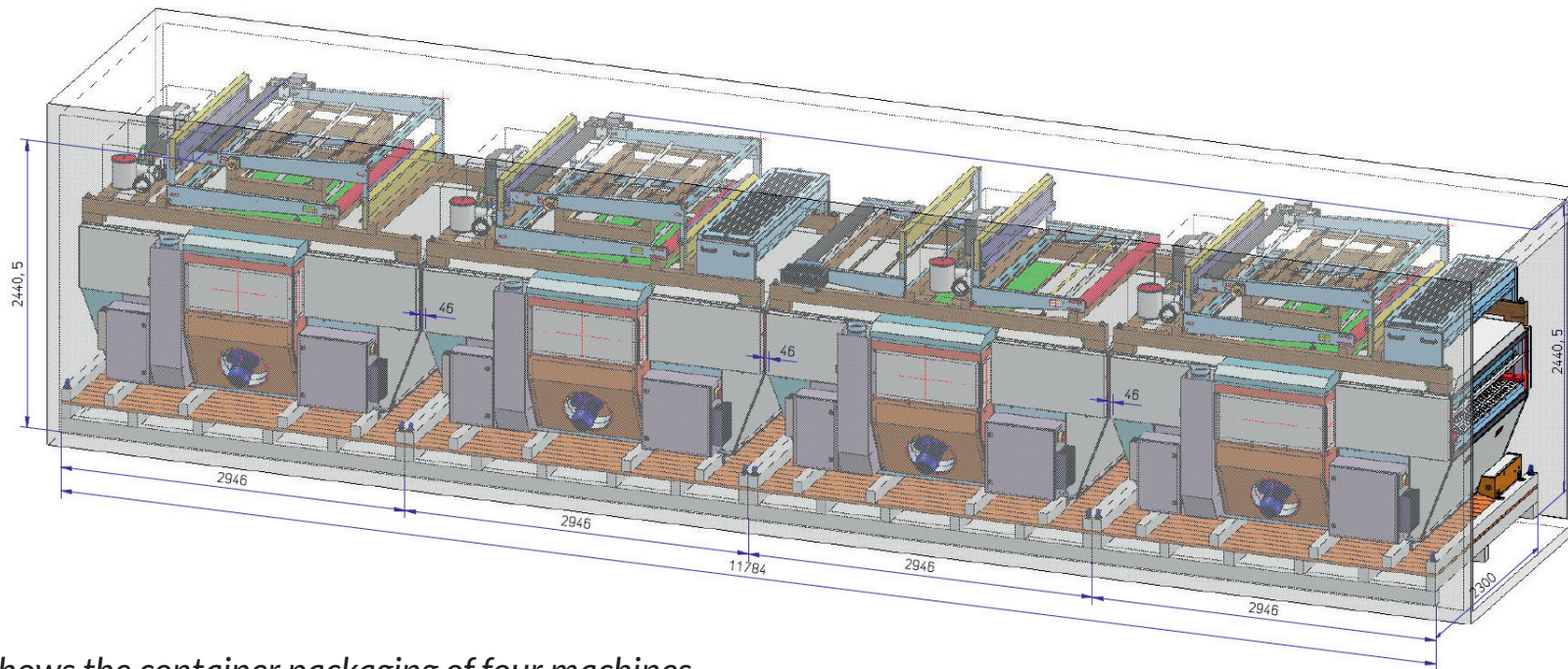


Dimensions (length x width x height) per machine

**Transport via
container shipping**
2,946 mm x 2,300 mm x 2,440 mm

Weight per machine

1,600 kg



The picture shows the container packaging of four machines.

Electrically heated

Nominal energy consumption during normal operation
(depending on the environmental conditions),
without infrared operation

22 kW/h

Power connection

40 kW / 61 A

Gas heated

Nominal energy consumption during normal operation
(depending on the environmental conditions),
without infrared operation

3 m³/h

Power connection

5 kW / 10 A

All information are approximate and depends on the actual production and ambient conditions.

