

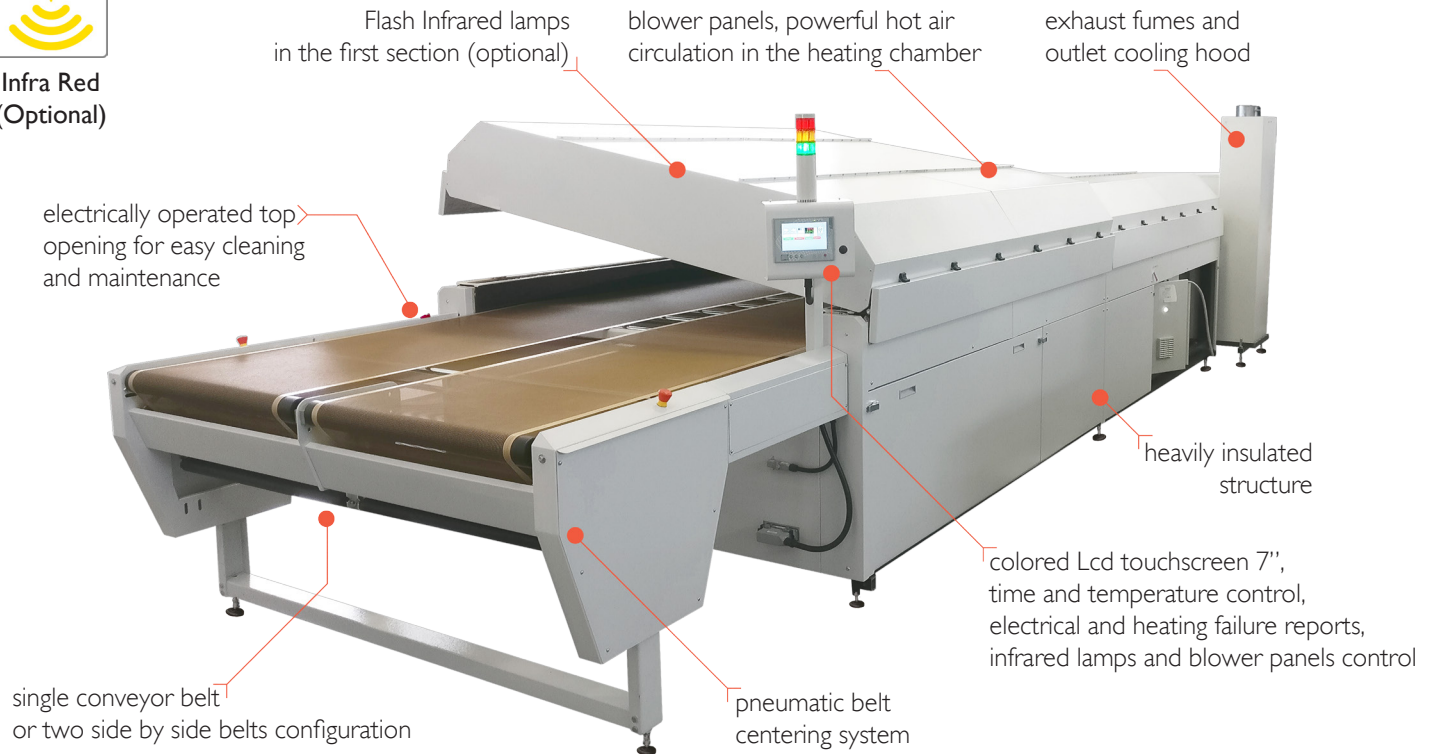


Hot Air



Infra Red
(Optional)

Gas, Forced hot Air, Powerful Dryers



Features

“Griff” is the tunnel dryer with the highest air circulation of its kind.

- It is designed to dry and cure fabrics printed with digital printers using water-based inks.
- The hot air circulation is particularly accurate and use reversed blades fans, with high efficiency and low noise.
- The air exchange is calibrated to expel water vapor and combustion fumes and facilitate drying.
- The outflow nozzles send the air onto the product in a perpendicular and high speed way.
- The temperature is regulated by a precision thermostat that drives a modulating premixed burner.
- The flame is always present and its intensity varies in function of power demand.
- The passage height is 130 mm, sufficient for the vast majority of products.
- The two independent belt speeds version can dry simultaneously two products with different drying time.
- It is possible to lift the upper section electronically to easily perform the internal cleaning of the dryer.

Optionals

- Inlet and outlet extensions
- IR heating with flash lamps in the first meter of the heating chamber



Hot Air



Infra Red (Optional)

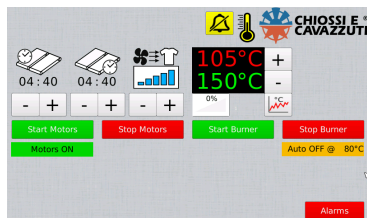


DTG Printing



Screen Printing

Main Application: DTG Digital Printing - Mass production



Griff PLC interface

New Configurations

Tunnel Length: 4, 6 or 8 meters Belt

width: 55", 70" or 2x35"



Infrared Lamps and upper section opening

Advantages

- new interactive interface
- optional combined drying system
- highest speed of hot air circulation
- powerful airflow specifically designed for DTG
- precise time and temperature control
- low consumption and efficient burner
- optional flash infrared lamps



Single belt configuration



Exhaust fumes and outlet cooling hood

Other models and configurations are available

TECHNICAL DATA	GRIFF 4140	GRIFF 4180	GRIFF 6180	GRIFF 8180
Electrical Requirements	400V 3P+N+PE 4,8 A	400V 3P+N+PE 4,8 A	400V 3P+N+PE 4,8 A	400V 3P+N+PE 5,1 A
Exhaust Specification	1500 m ³ /h Ø 200 mm	1500 m ³ /h Ø 200 mm	1500 m ³ /h Ø 200 mm	1500 m ³ /h Ø 300 mm
Max Temperature	392°F	392°F	392°F	392°F
Power Consumption (max)	2,5 kw	2,5 kw	2,5 kw	5 kw
Burner Power	40 kw	40 kw	40 kw	40 kw
Belt Width [mm]	57"	70" or 2-35"	70" or 2-35"	70" or 2-35"
Tunnel Length [mm]	13'	13'	19.6'	26.1'
Production ^{1,2} (light-dark)	480-320 pieces/h	640-420 pieces/h	940-470 pieces/h	1000+ pieces/h
Dimension (LxWxH)[mm]	274"x84"x82"	274"x97"x82"	353"x97"x82"	432"x97"x82"
Shipping Weight	3968 lb	4400 lb	5511 lb	8818 lb

^{1,2} Production of T-shirts with A4 size DTG print - 4 minutes curing time for light garments - 6 minutes curing time for dark garments.