

HYPERAX[®]

VOLT *eco*



Caution : Do not mount to any type of trailer or RV including Class B vehicles.

Specification:

Max loading weight : 120 lbs (60 lbs per bike)

Compatible with 2 inch hitch receiver

Carry bike wheels up to 5 inch

Fits bikes up to 58 inch wheelbase

Patented design

Please enter your key number below for future reference

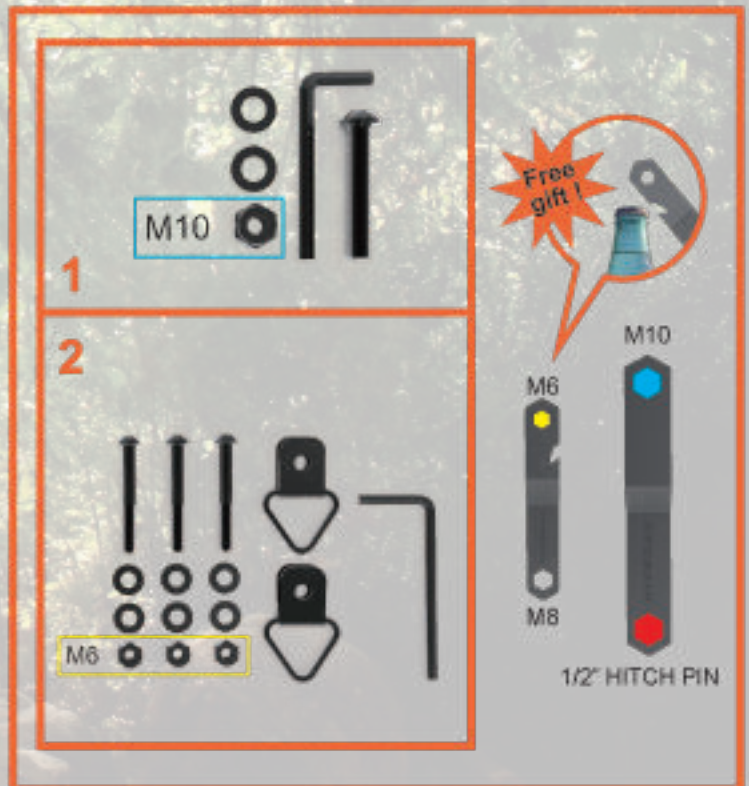
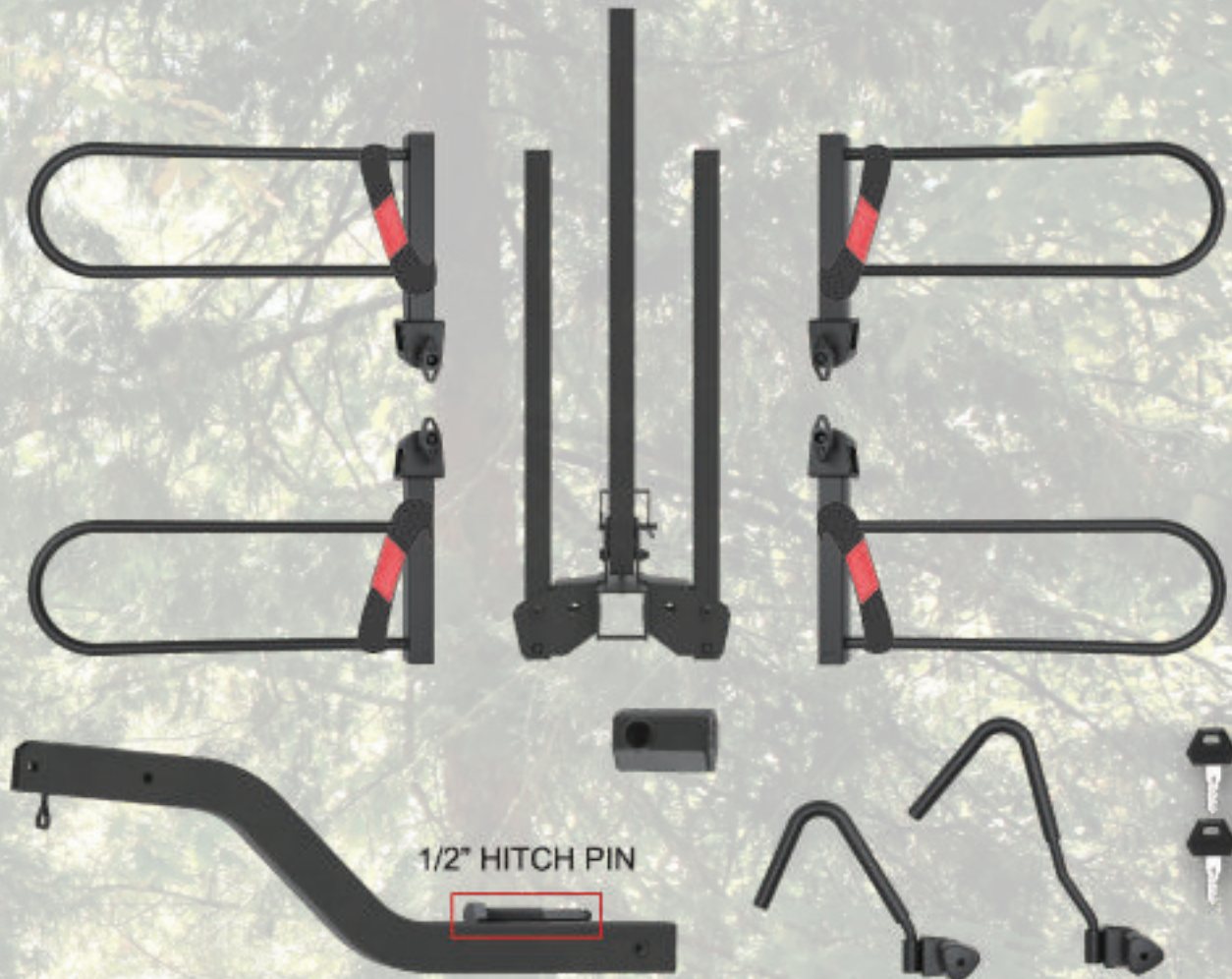


This manual was shipped with the product and might not be the latest version. Please scan the QR code to ensure updates.

Instructions



CHECKED ALL THE PARTS IF THERE ARE ANY PARTS MISSING, CONTACT WARRANTY@HYPERAX.CO



INSTALL THE RACK TO THE HITCH AND INSERT HITCH PIN AND SECURE IT WITH HITCH PIN LOCK



When the hitch pin is inserted by lock set fully, it is locked automatically.



1/2" HITCH PIN



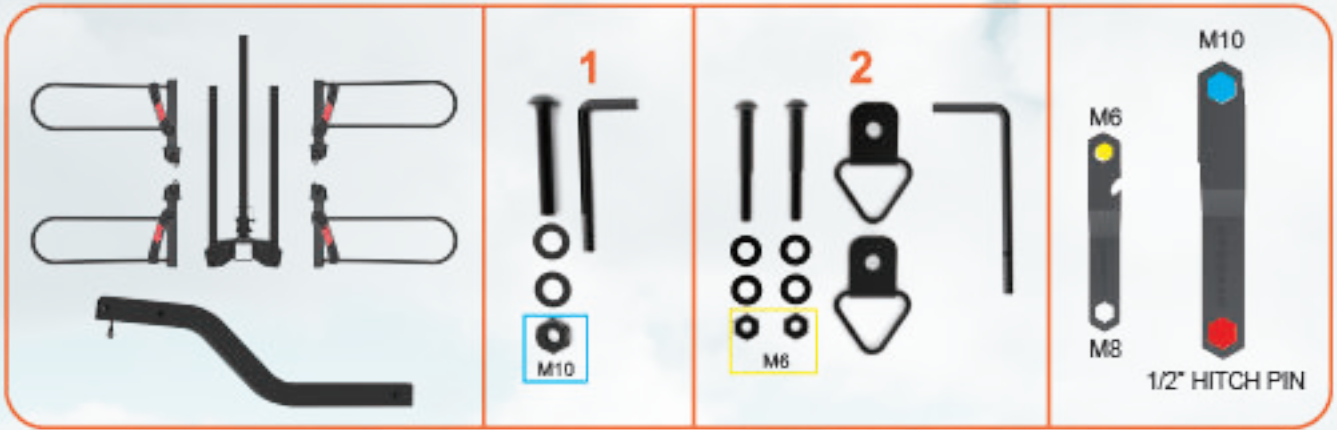
Detailed description: A photograph of the 1/2 inch hitch pin, which is a long metal bar with a red dot at one end and a hole at the other.



If you need to remove the lock set, use the key provided to unlock it.

A. This feature helps to locate the hitch pin hole position for next use.

B. Once you tighten the knob, it automatically locates the hole for next hitch pin insertion.



HYPERAX® ASSEMBLE CLAMPS AND CARRY HANDLE



C. Put your bike on with both hands.

B. Hold the main post with another hand then drop it down slowly.



B Push down the locking clamp to touch the bike frame firmly with one hand and hold the bike with another hand at the same time. Then tighten the locking clamp by rotating the knob clockwise.



D lock the bike with the key.

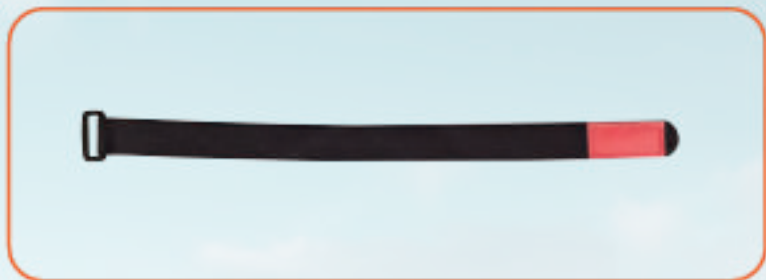
A. Remove the safety pin with one hand.



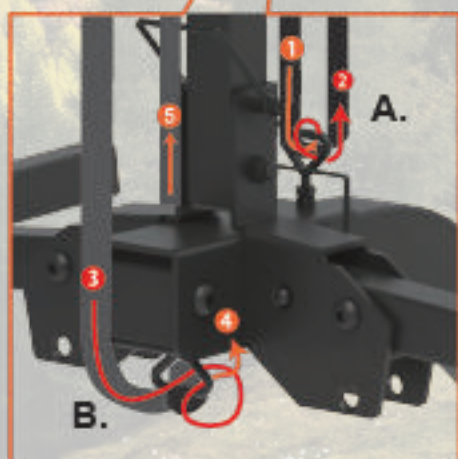
A Bring the main post back to original position with one hand and hold the bike with another hand at the same time.

C Insert the safety pin back with one hand and hold the post with another hand at the same time.

HYPERAX[®] STRAP ONTO THE WHEELS



Use Velcro straps to secure tires
Make sure the reflective material
is revealed.



A. Integrated safety strap hook for first bike.

B. Integrated safety strap hook for second bike.

C. load bikes in alternative position and secure each e bike with one security strap (see left diagram) make sure the safety strap secure the bike frame and the rack together use integrated velcro strap to organize the excess after it is tightened against the buckle.

| INSTALLATION COMPLETE |

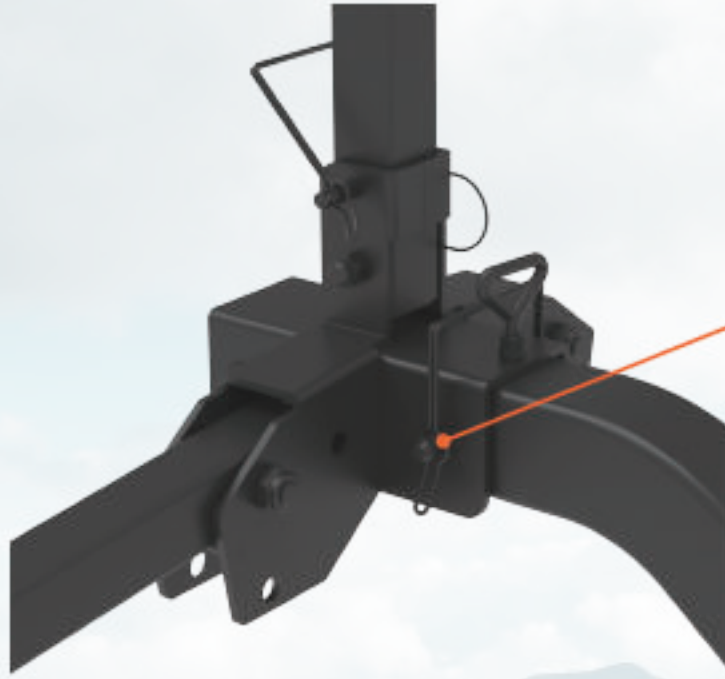


**Do not open the rear door
before the rack is tilted down.**



TILT DOWN WITH BIKES
FOR CARGO ACCESS

HYPERAX® |

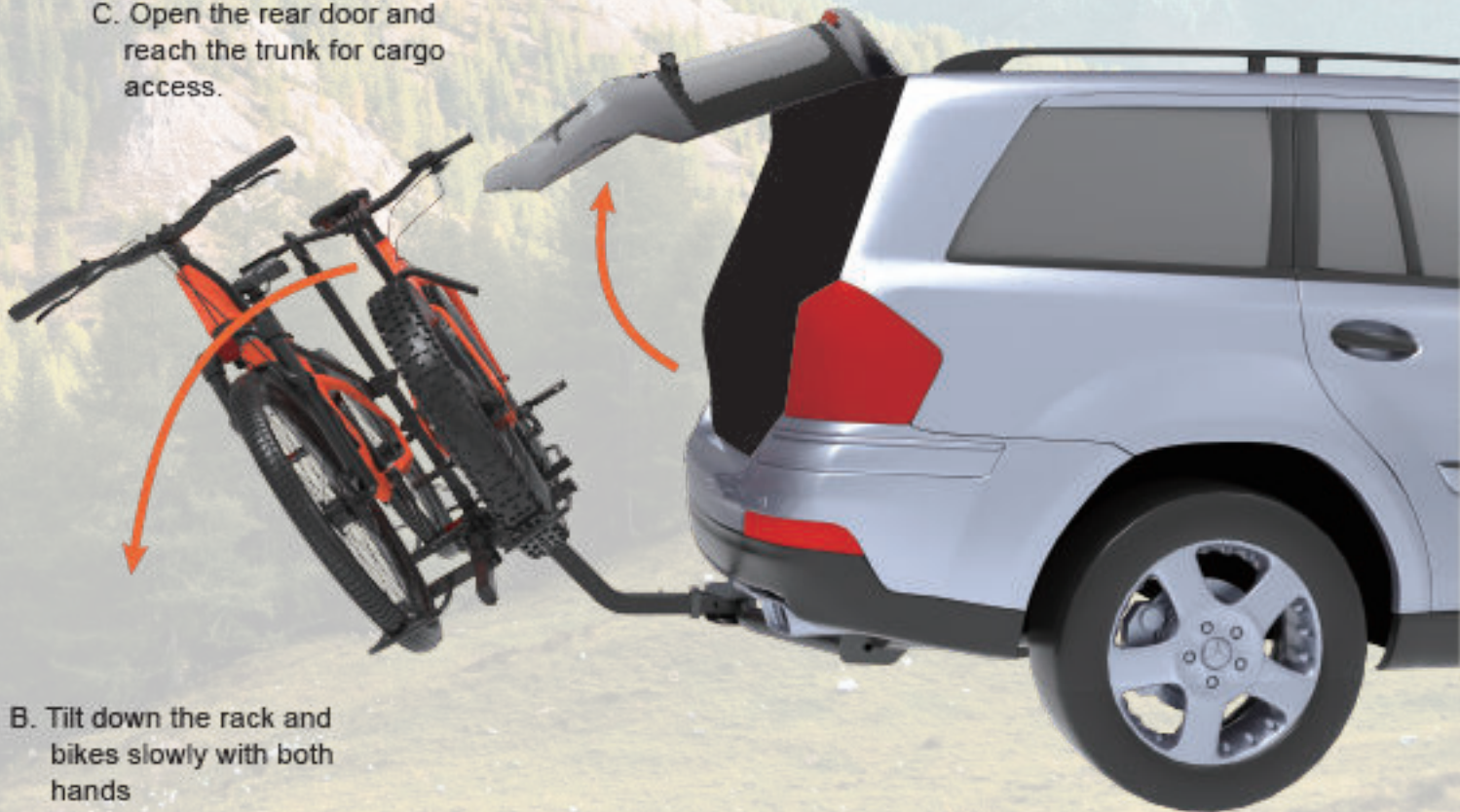


A. Remove the safety pin with one hand and hold the bike with another hand.



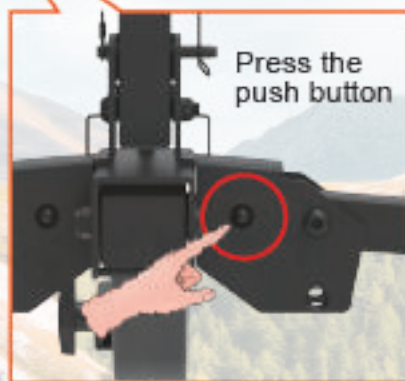
C. Open the rear door and reach the trunk for cargo access.

D. After the rack and bikes are back into original position, insert the safety pin back and use its lanyard retainer to secure it.



B. Tilt down the rack and bikes slowly with both hands

HYPERAX[®] STORAGE POSITION



Press the push button



Carry handle

Storage wall hook

Make sure the push buttons are fully engaged after the two lateral beams fold up

HYPERAX[®]



STORE ON THE GARAGE WALL

Warnings

1.0 General warning for car racks

- 1.1 Hyperax assumes no liability for injury to persons, damage to movable or immovable property, loss of profit, or any other loss or damage caused by the improper mounting or use of the carrier, including but **not** limited to mounting or use in conflict with the assembly instructions, mounting instructions or any other instructions given, in writing or verbally, by Hyperax or a Hyperax dealer.
- 1.2 The carrier and its parts must **not** be modified in any way.
- 1.3 Read all of the instructions and warranty information carefully before mounting and using the carrier.
- 1.4 Allow a minimum distance of 12" between the ground and the bottom of lowest wheel tray.
- 1.5 Rack must be installed directly into vehicle hitch receiver. Do **not** modify the hitch receiver or use hitch extenders.
- 1.6 Do **not** mount to any type of trailer or RV including Class B vehicles.
- 1.7 This carrier is **not** recommended for off-road use or for use at speed exceeding 70 mph (113 km/h).
- 1.8 Rack should only be used on vehicles with Class II 1 1/4", or Class III or IV 2" receiver hitches
- 1.9 Warning during fitting of the bike carrier.
- 1.10 Check the assembly instructions to make sure that all the necessary parts of the carrier are present.
- 1.11 Do **not** attempt to fit the carrier in any other way than the way shown in the mounting instructions.
- 1.12 Prior to installation, please clean the receiver hitch thoroughly.

2.0 Warning during loading of the bikes

- 2.1 Check and do **not** exceed the maximum weight per bike specified in the mounting instructions. In addition, the maximum load recommended for the vehicle itself always takes priority over the load specified in the assembly instructions. It is always the lower recommended maximum load that applies and that must **not** be exceeded.
- 2.2 The load must be carefully secured. Security strap must be used.
- 2.3 When loading bikes on the carrier, always position the largest and heaviest bikes closest to the car, followed by the smaller and lighter bikes.
- 2.4 The carrier is constructed to carry only standard bike frames. Tandem bikes must **not** be transported on the carrier. Always check and do **not** exceed the maximum bike wheelbase and tire width specified in the mounting instructions.
- 2.5 In the case of bikes with carbon frames or forks, always consult the bike manufacturer to check if you are allowed to use the carrier.
- 2.6 Hyperax assumes no liability for any damage to carbon frames or forks incurred during mounting and/or use of the carrier.
- 2.7 All easily removable parts of the bikes must be removed before transportation, including but **not** limited to water bottles, child seats, baskets, locks (if not permanently mounted) and air pumps.
- 2.8 When vehicles are equipped with power tailgate, it is necessary to turn off the power when you install car racks. If this option is **not** available, do **not** use car racks.
- 2.9 If necessary, the load must be fitted with the appropriate lights and warning signs in accordance with local laws. Car tail lights must remain visible
- 2.10 Always obey the local traffic laws, when you drive with car racks.
- 2.11 Not intended for tandems, mopeds or recumbents.
- 2.12 Do **not** install on a trailer or other towed vehicle unless the rack is approved for RV use per manufacturer recommendation.
- 2.13 Before transport of bikes, be sure your tires are properly inflated. Never carry bikes with flat or leaky tires. Loss of air pressure in tires can cause bikes to become unstable during transport.
- 2.14 Make sure bike tires are **not** directly behind exhaust pipe.

3.0 Warning during driving with bike racks

- 3.1 This product is **not** approved for and must **not** be used during off-road driving.
- 3.2 The vehicle driver is solely responsible for ensuring that the rack is in perfect condition and that the carrier and load are securely fastened (even if fitted by a third person).
- 3.3 The vehicle's total length and/or height may increase when a carrier is mounted. The bikes themselves may increase the vehicle's total width and height. Take special care when reversing and/or entering garages or ferries etc.
- 3.4 Replace any damaged or worn parts of the carrier immediately. During transportation, all levers, bolts and/or nuts must be tightened in accordance with the mounting instructions.
- 3.5 Carriers fitted with a lock must always be in the locked position. The keys must be removed and kept inside the vehicle during transport.
- 3.6 Be aware that the vehicle's driving characteristics and braking behavior (including in curves) might change.
- 3.7 Drive slowly over speed bumps, maximum speed 10 miles per hour.
- 3.8 For reasons of fuel economy and environmental impact as well as the safety of other road users, the carrier must be removed from the vehicle when **not** in use.

4.0 Maintenance

- 4.1 Clean the carrier regularly using warm water or car shampoo, especially when using or after using the carrier in coastal areas or during periods when salt is applied to the roads during winter time.
- 4.2 Lubricate the moving parts of the carrier when required.
- 4.3 Remove the carrier before using an automatic car wash.
- 4.4 If you lose part(s) of the carrier or part(s) of the carrier wear out, only use genuine Hyperax spare parts as replacements. Spare parts can be purchased from manufacturer via email at warranty@hyperax.co
- 4.5 To ensure that you receive the spare parts quickly, please provide the relevant product details and the serial number when making an inquiry.
- 4.6 Check tightness of all bolts and knobs periodically.
- 4.7 Check straps for wear and replace if worn.

Hyperax Limited Lifetime Warranty

Please be noted that this warranty is based on the purchaser with original retail price on a receipt or invoice(named "original purchaser"). Should this product transfer and/or sell to other person, warranty terminates. This product is solely available with personal, family and household use. It cannot be used for business or commercial purpose. We only warrant Hyperax-branded products against defects in manufacturer or delivery for the original purchaser during warranty time period specified below. If defects are believed to be caused by manufacturer or delivery after inspection by our technicians, Hyperax will remedy defects with repair or replacement, at Hyperax's option, without any charge subject to this warranty. In some cases, Hyperax may not repair or replace a defective product, at Hyperax's option, and instead issue either a refund equal to the purchase price paid for the product, or a credit to be used toward the purchase of new Hyperax products or components.

This warranty does not cover:

- 1.Problems result from normal wear and tear (including, but not limited to, scratches, dents, tears, or materials oxidation of surfaces, or natural breakdown of colors over extended time and use)
- 2.Commercial use, accidents, unlawful vehicle operation, or modifications or repairs not performed or authorized by Hyperax.
- 3.Products are not used properly with Hyperax instructions or warnings.
- 4.Circumstances go beyond Hyperax's expectation including, but not limited to, extreme weather events, theft, misuse, overloading, or failure to assemble, mount or use the product.
- 5.Any damage to non-Hyperax products transported using Hyperax products or used to connect Hyperax products.

Limitation of Liability:

Repair or replacement of a defective product or the issuance of a refund or credit (as determined by Hyperax) is the original purchaser's exclusive remedy according to this warranty. Damage or injury to the original purchaser, to his or her vehicle, cargo, or property, and/or to any other person or property is not covered by this warranty. This warranty is clearly made in lieu of any and all other express warranties, no matter oral or written.Hyperax's sole liability to any purchaser is limited to the remedy set forth above. In no event will Hyperax be liable for any lost profits, lost sales, or for any consequential, direct, indirect, incidental, special, exemplary, or punitive damages or for any other damages which were not directly and clearly caused by a defective product.

File A Claim:

We are sorry to hear that you are having difficulty in your product. Before contacting us, please have the following items ready, and send to warranty@hyperax.co (For purchase made at a Hyperax dealer, please contact the dealer where you purchased your product for support.)

- 1.Proof of purchase, as a receipt with original price and purchase date
- 2.Issue description like how it happened and what caused it
- 3.Close-up photos of the issue
- 4.Photos of the entire product (front, rear and sides)
- 5.A photo of product serial number (Located at the side of hitch draw bar)

We will reply to you for immediate help soon.

HYPERAX[®]
WARRANTY

Thank you for purchasing products from Hyperax. Please visit our Facebook for customer service and to get your limited lifetime warranty registration on official website. We will also post all our future events and products on Facebook and Youtube!

✉ E-mail: warranty@hyperax.co



Thank you for purchasing products from Hyperax.
Please visit our Facebook page for customer service
and to get your limited lifetime warranty registration
on official website. We will also post all our future
events and products on Facebook and Youtube!



Hitch Mounted Bike Rack Model : 2 E-Bike Platform rack