

## Art.9086

Concealed self-closing mixer

### Characteristics:

Standard flow at 3 bar: 10 L/min.  
 Flow rate with adjuster: 6 L/min, 5 L/min, 8 L/min  
 Pressure: (0.5 – 6) bar  
 Temperature: Max 80°  
 Standard closing time: 15" / 25"  
 Temperature Selection  
 NO water hammers



### Materials:

- Body in chromed brass plated brass conform to EN 1982, EN 12164, EN 12165 standards
- Push button in chromed brass plated brass conform to EN 1982, EN 12164, EN 12165 standards
- Lever for mixer in chromed brass plated brass conform to EN 1982, EN 12164, EN 12165 standards

### Reference standard:

EN 816:2017

### Features:

- Timing in conformity with EN 816
- Treatment of the nickel-chrome surface conformity with EN 248 standard
- Resistance to saline aggression 200h conformity to EN ISO 9227 standard

### Accessories / components supplied:

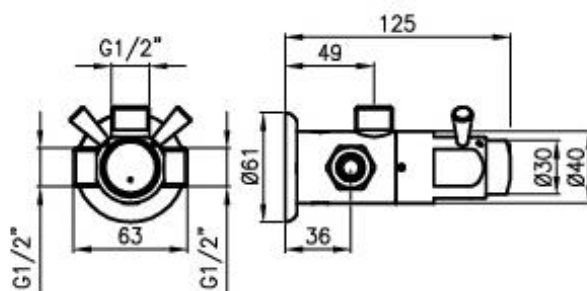
Ogiva  
 Ice cap awards

### Opzion:

Nichel FREE  
 Soft touch  
 Flow adjustment  
 Time adjustment  
 Vandal  
 Closing time adjustment:  
 3 " , 4" / 6 " , 8" / 12 "12" / 16 " ,  
 Available in DZR brass

### Note:

- Usare filtro a monte dell'impianto
- Pulizia solo con acqua e panno morbido evitando acidi e abrasivi



**15 anni**

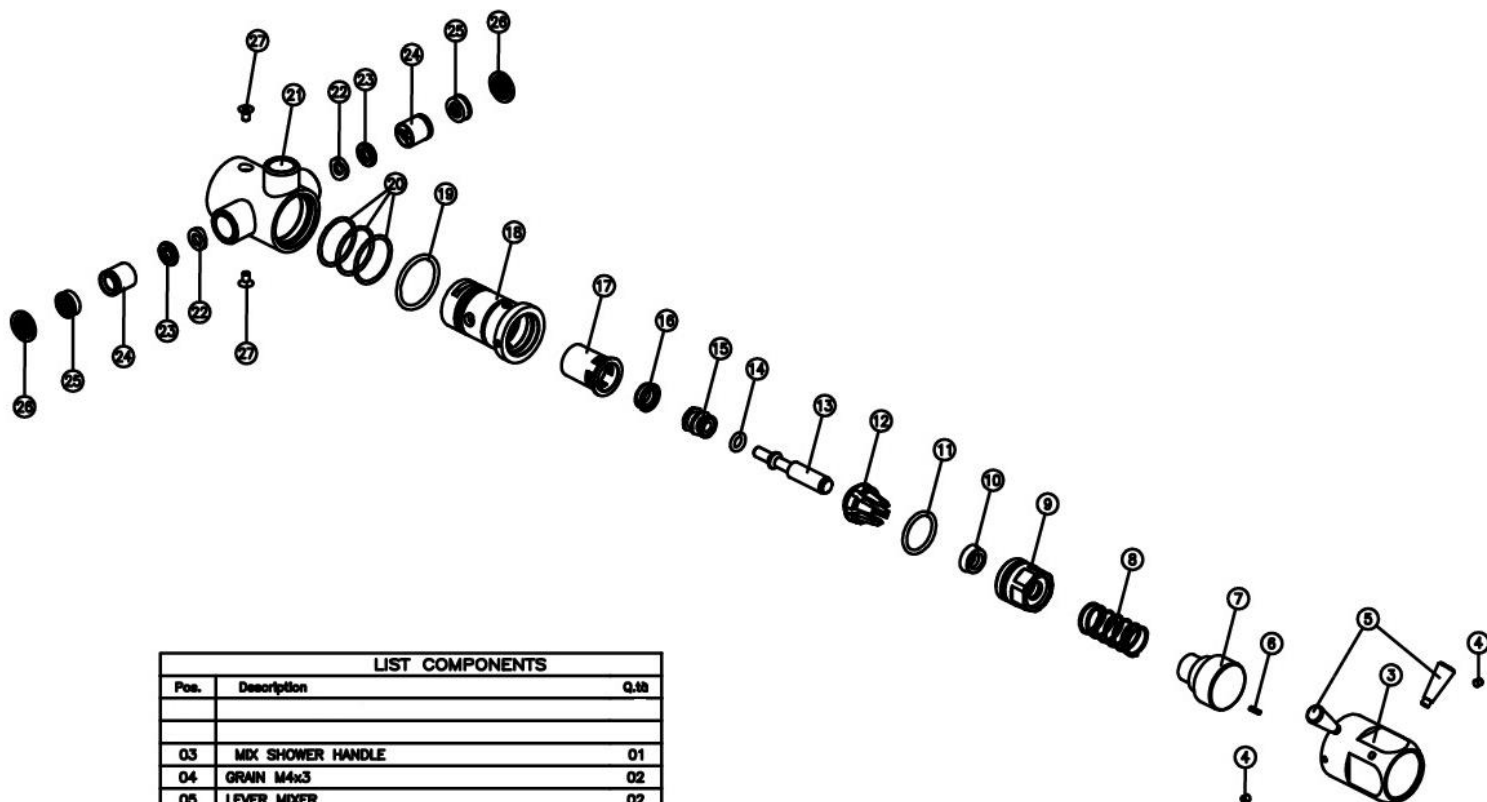


**Water saving up to 85%**



**MADE IN ITALY**

www.mcmtaps.it

**Art.9086**


LIST COMPONENTS		
Poe.	Description	Q.tà
03	MIX SHOWER HANDLE	01
04	GRAN M4x3	02
05	LEVER MIXER	02
06	GRAN	01
07	PUSH BUTTON	01
08	SPRING	01
09	HEAD VALVE Ø26 H.23,5 ES.24	01
10	GASKET	01
11	O-RING Ø20x2,5 OZONO	01
12	TURRET FOR VITONE	01
13	STEM Ø10 H.80	01
14	O-RING Ø6x2,5 NBR 70 Sh	01
15	VALVE Ø15 H.14,5 ES.14	01
16	GASKET Ø 7,8x8,7x4,7 EX707-250	01
17	CUP	01
18	TAP BODY	01
19	O-RING Ø20,30x2,62 NBR 70 Sh	01
20	O-RING Ø26,7x1,78 NBR 70 Sh	03
21	BODY	01
22	BUSH FOR SHOWER MIX	02
23	PREMIXED SHOWER WASHER FOR SHOWER MIX	02
24	NON-RETURN VALVE	02
25	FLOW REDUCER	02
26	FILTRE	02
27	SCREW	02