

## Art.9006

Automatic shut-off sanitary simple tap

### Characteristics:

Standard flow at 3 bar: 15 L/min  
 Flow rate with adjuster: 6 L/min, 5 L/min, 8 L/min,  
 Pressure: (0.5– 6) bar  
 Temperature: Max 80°C  
 Standard closing time: 15" / 25"  
 NO water hammers



### Materials:

- Body in chromed plated brass conform to EN 1982, EN 12164, EN 12165 standards
- Push button in chromed plated brass conform to EN 1982, EN 12164, EN 12165 standards
- Plate 21/24 in chromed plated brass conform to EN 1982, EN 12164, EN 12165 standards

### Reference standard:

EN 816:2017

### Certification:



### Features:

- Timing in conformity with EN 816
- Treatment of the nickel-chrome surface conformity with EN 248 standard
- Resistance to saline aggression 200h conformity to EN ISO 9227 standard

### Accessories / components supplied

Fixing kit (dowels and screws)

Warheads 15mm brass

Caps

### Options:

Regulation flow

Regulation Time

Anti-vandal

Nichel FREE

Soft touch operation

Available in DZR brass

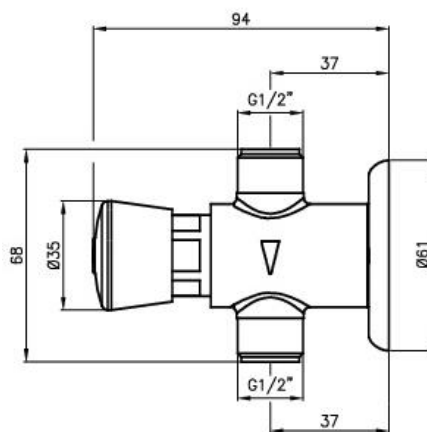
Lever command

Regulation Time

3", 8"/12", 12"/16", 4"/6"

### Note:

- Use a filter upstream of the system
- Cleaning only with water and soft cloth avoiding acids and abrasives



**15 anni**

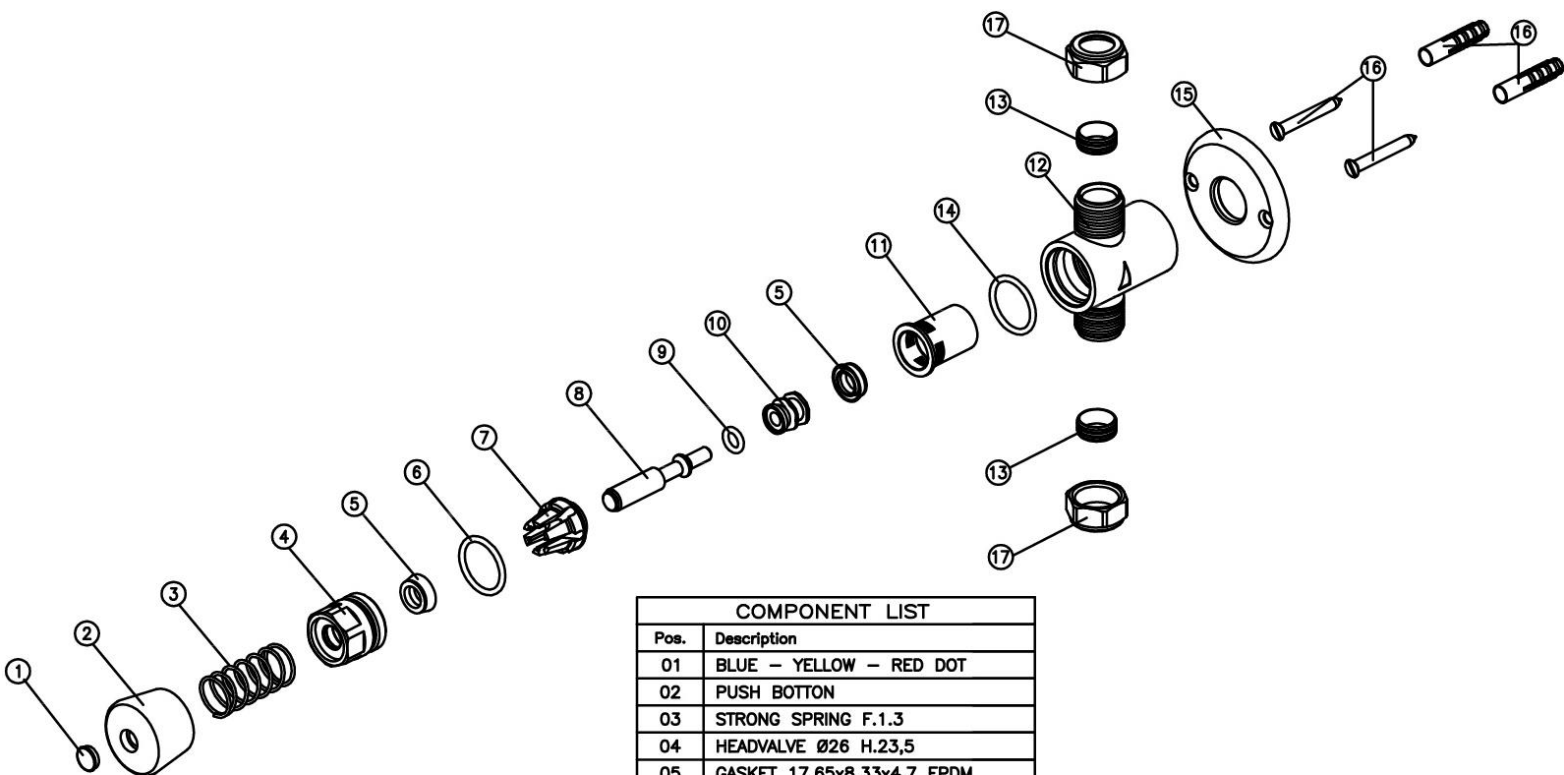


**Water saving up to 85%**



**MADE IN ITALY**

www.mcmtaps.it

**Art.9006**


COMPONENT LIST	
Pos.	Description
01	BLUE - YELLOW - RED DOT
02	PUSH BOTTON
03	STRONG SPRING F.1.3
04	HEADVALVE Ø26 H.23,5
05	GASKET 17.65x8.33x4.7 EPDM
06	O-RING 20x2.5 IN OZONO
07	CROWN RING
08	STEM Ø10
09	O-RING Ø6x2.5 IN EPDM 70
10	VALVE CH.14x14.5
11	CUP 4/6"
12	TAP BODY
13	OGIVA Ø17x15,2 H.7
14	O-RING 17x1.5 EPDM
15	PLATE
16	SCREW
17	CALOTTA ES.24 H.12