

SPECIFICATIONS

Push Button Shower Valve Panel Wall Unit 86mm (Adjustable Time&Temp)

Concealed self-closing mixer

GENERAL INFORMATION

Valve Type: Self Closing Metering Valve
Valve Activation: Manual Push Button Valve
Installation Type: Concealed Wall Mount
Body Material: Lead Free Solid Brass
Finish Type: Chrome Plated Finish

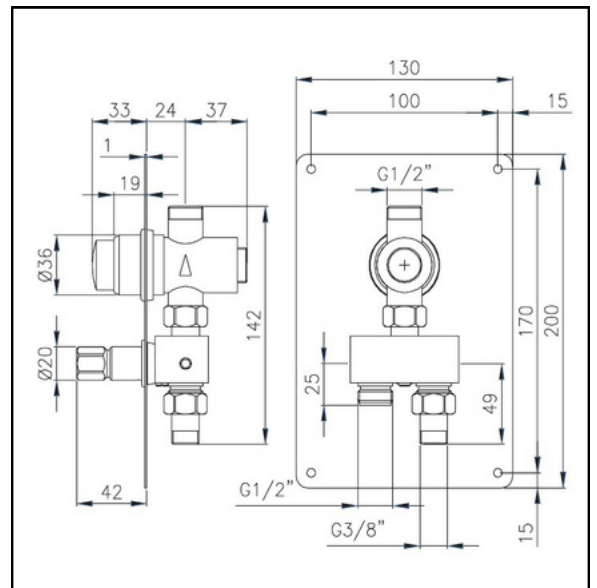
CONNECTIONS & DIMENSIONS

Connection Inlet: 1/2" MPT (3/8" FPT Adapters Included)
Connection Outlet: 1/2" MPT
Panel Width: 5.1" (130mm)
Panel Height: 7.9" (200mm)



PRODUCT FEATURES

Time Adjustable: Yes, 3-40 Seconds
Temperature Adjustable: Yes
Working Temperature Range: 40 Degrees F - 160 Degrees F
Built-in Premix: Yes
Lead Free and Corrosion Resistant
Vandal Resistant: reduces tampering and risk of flooding
Water Saving Up To 85%!



WHAT'S INCLUDED

Face Plate Panel
Push Button Shower Valve
Adapters With Washers (1/2 in MPT to 3/8 in FPT)
Black Buffer Ring (36x42 mm)
Black Buffer Ring (20x23 mm)
Filter Screens (1/2 in)
Compression Nut With Brass Ferrule (1/2 in)
Allen Wrench For Time Regulation (1.3 mm)
Phillips Pan Head Screws With Plastic Anchors (1 1/2 in)



40-160 °F



0.5-6 bar
2-4 bar (Recommended)



10 l/min (3 bar)



1/2" MPT



EN 12540, EN 1982,
EN 12164, EN 12165,
EN 816, ISO 9227
ADA COMPLIANT



15 Year Warranty

KING SUPPLY COMPANY
16 WHITINS RD
SUTTON, MA 01590
1 (866) 352-6652
INFO@KINGSUPPLY.COM

SLSHVC-ADJ-SCP

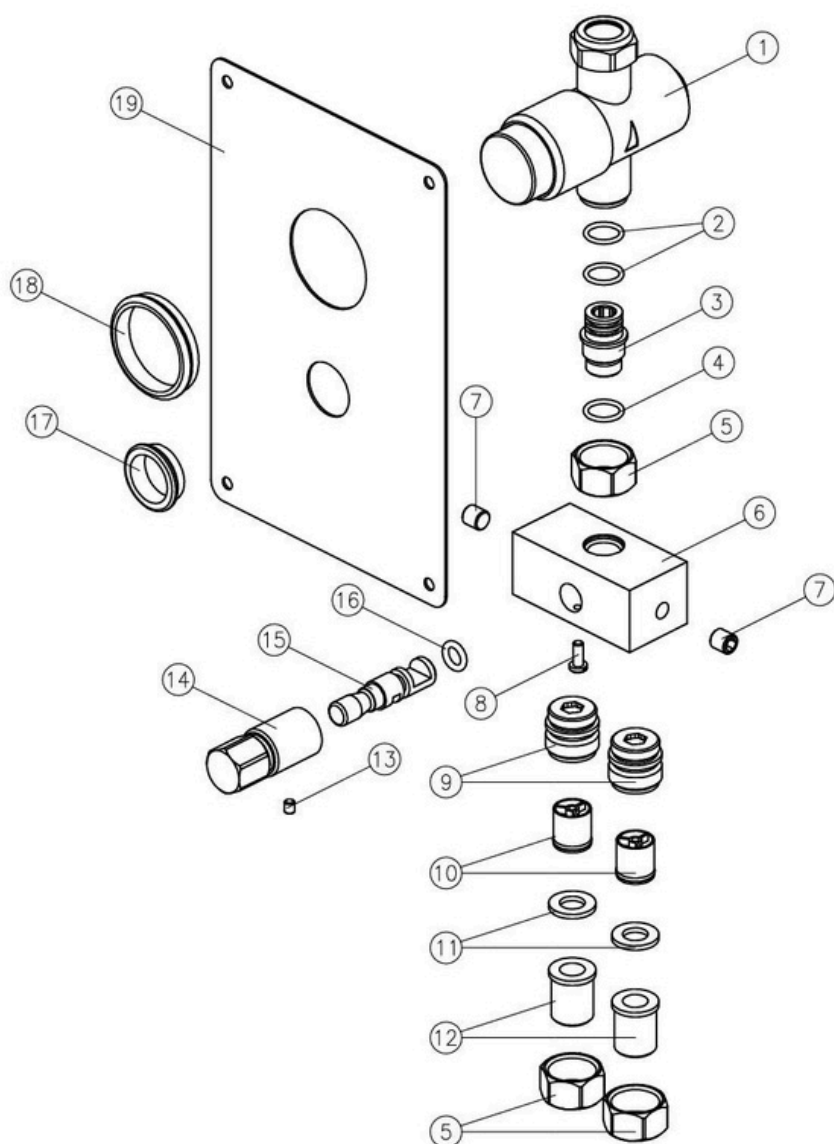
 100% Made in Italy



DIARAM

Push Button Shower Valve Panel Wall Unit 86mm (Adjustable Time&Temp)

Concealed self-closing mixer



LIST COMPONENT		
Pos.	Description	Q.tà
01	TAP BODY -- Art.9005	01
02	O-RING Ø10.82x1.78 NBR 70 SH	02
03	JUNCTION	01
04	O-RING Ø12.42x1.78 NBR 70 SH	01
05	CAP	03
06	BODY MIXER	01
07	GRAIN M8x8	02
08	SCREW M4x12.5	01
09	JUNCTION	02
10	VALVE	02
11	GASKET Ø18.5x11 H.2	02
12	JUNCTION	02
13	GRAIN M4x4	01
14	MIXER KNOB	01
15	MIXER STEM	01
16	O-RING Ø7x2.5 NBR 70 SH	01
17	SLIDING RING FOR MIXER	01
18	SCROLL RING FOR RECESSED SHOWER	01
19	PLATE Art.9005 MIX	01