



Fresh air in
your house!



VK-*Anti*RADON Series

CENTRIFUGAL INLINE FANS



Tel: 888-640-0925
513-348-3853
Fax: 513-268-4597

Sales@ventsus.com
VentsUS.com
11013 Kenwood Road,
Cincinnati, Ohio 45242

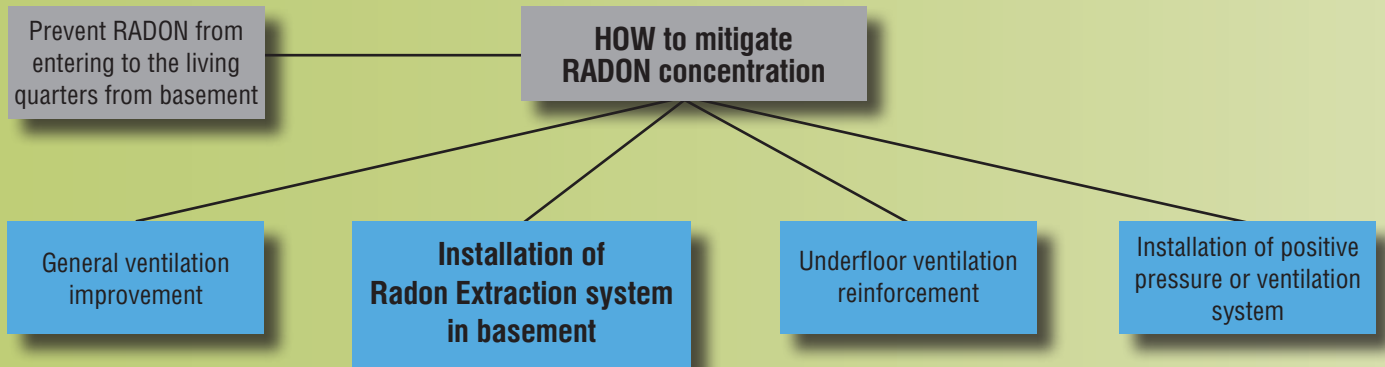


RADON in your home can be real and dangerous

We are surrounded by natural radioactive elements, which can be dangerous to human health in large quantities. RADON together with its half-decay products - plumbum, bismuth and polonium - is a dangerous substance. Fortunately, most radon decay products present in the air we breathe in is exhausted while breathing out. Still even a small radon quantity can provoke radiation contamination if

the radioactive particles get trapped in the lungs. Radon is the second leading cause of lung cancer worldwide. Radon is colorless, odorless and tasteless natural radioactive gas that can be found anywhere in nature. It is produced by the decay of uranium in soil. Radon becomes a problem when it is trapped in a building and becomes concentrated.

The most effective Radon reduction method is the installation of fans that can vent the elevated level of Radon outside. It is important to mitigate the radon if your basement or crawl space has tested positive for it.

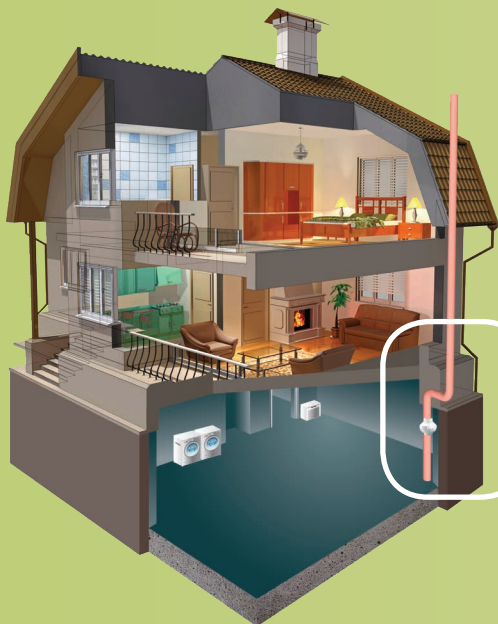


VENTILATION is one of the best ways to get RADON OUT of your home

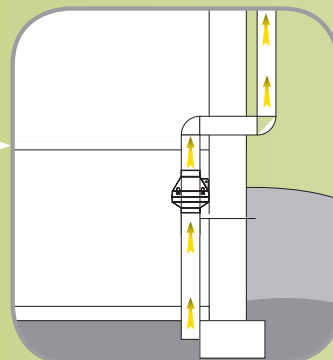


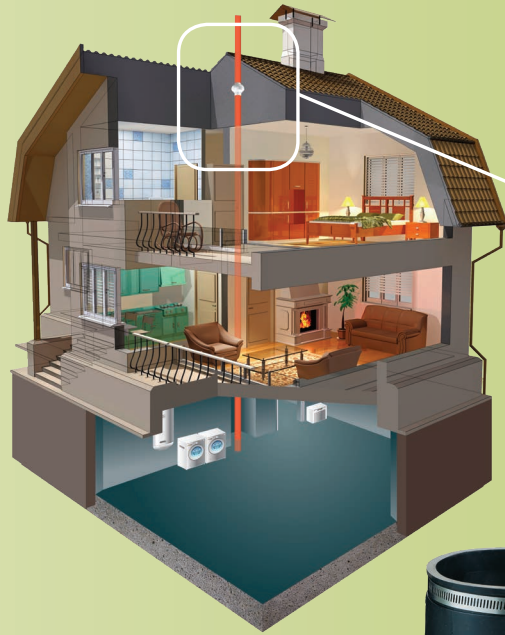
Solve your problem effectively and quickly with **VENTS VK-AntiRADON Fans**.
VENTS VK-AntiRADON fans meet requirements specifically for radon application.

Radon Extraction Installations in Basement

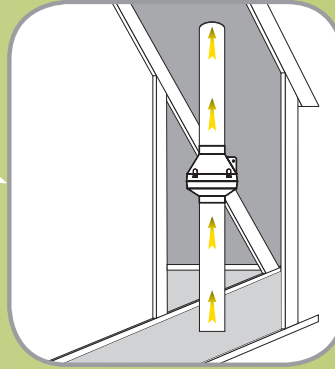


The **VENTS VK-AntiRADON** fan is fixed on the wall. The polluted air is extracted at roof level. The air ducts must be located at least 10' away from any window.





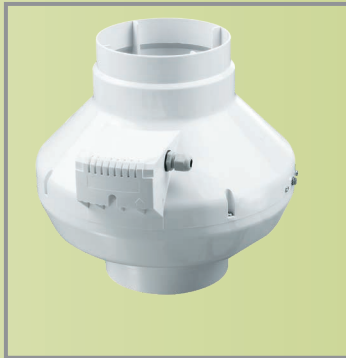
Attic installation. **VENTS VK-AntiRADON** fan installed in attic.



For airtight installation of **VK-AntiRADON** fan rubber collars with stainless clamps are recommended to use.

* not supplied with the fan

VK-AntiRADON fans

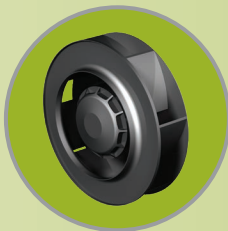


VENTS **VK-AntiRADON** fans are **specially designed** with high pressure capabilities for **Radon Mitigation** Application.

The fans are specifically designed for **radon extract** ventilation of basements, cellars, crawl spaces, etc. Compatible with Ø 4", 5", 6", 8", 10" and 12 ^{3/8}" round air ducts.

Installation made easy with the supplied mounting brackets.

Benefits:



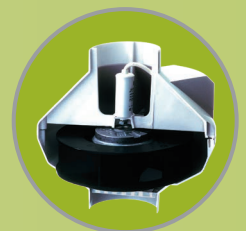
Dynamically Balanced Impeller
Ensures **Vibration Free Operation**.

Highly efficient backward inclined impeller delivers exceptional airflow even in high static pressure systems.



German Made High-Efficient
external rotor motor

Ball Bearings motor ensures **Low-Noise**
and **Maintenance-Free** operation



Factory Sealed case, **No Leakages**
UV Resistant durable UL94 certified plastic.

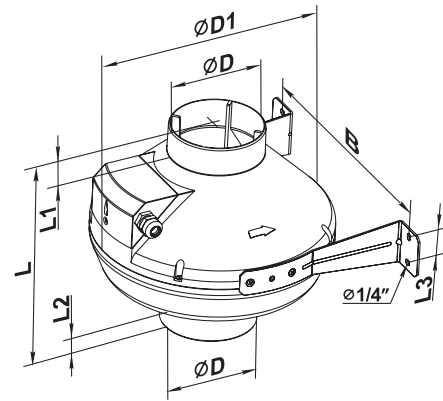


Power Cord & Mounting Brackets
Included



Dimensions

Model	Measurements [in.]							lbs
	ØD	ØD1	B	L	L1	L2	L3	
VK-AntiRADON 100	3 15/16"	9 13/16"	10 5/8"	9 1/16"	1 3/16"	1 1/16"	1 3/16"	4,7
VK-AntiRADON 125	4 15/16"	9 13/16"	10 5/8"	8 11/16"	1 3/16"	1 1/16"	1 3/16"	4,9
VK-AntiRADON 150	5 7/8"	11 13/16"	12 3/16"	11 1/4"	1 3/16"	1 3/16"	1 3/16"	5,7
VK-AntiRADON 200	7 7/8"	13 3/8"	13 15/16"	10 7/8"	1 3/16"	1 3/16"	1 9/16"	8,8
VK-AntiRADON 250	9 13/16"	13 3/8"	13 15/16"	10 7/16"	1 3/16"	1 3/16"	1 9/16"	9,9
VK-AntiRADON 315	12 3/8"	15 3/4"	16 5/16"	16 5/16"	1 9/16"	2 3/16"	1 9/16"	11,2



Performance

Model	Duct dia	Sones	RPM *	Watts *	CFM vs. Static Pressure (Ps) in WG					Max. Ps	Volt / Hz
					0"	0.2"	0.5"	1.0"	1.5"		
VK-AntiRADON 100	4"	8.54	3088	106	162	150	134	104	67	2.18	120 / 60
VK-AntiRADON 125	5"	7.14	2960	114	235	214	178	123	72	2.05	120 / 60
VK-AntiRADON 150	6"	7.16	2907	113	317	289	247	178	68	1.86	120 / 60
VK-AntiRADON 200	8"	8.10	3016	140	507	465	395	287	189	2.20	120 / 60
VK-AntiRADON 250	10"	10.20	2604	293	735	675	588	432	307	3.06	120 / 60
VK-AntiRADON 315	12 3/8"	11.50	2641	269	871	779	635	393	266	2.66	120 / 60

* The parameters RPM, Watts, Amps are stated in 0.2 in WG static pressure.

Specification

Voltage: **120V, 60Hz**

Motor: Single-phase external rotor motor with backward curved centrifugal impellers

Duct compatibility: **Ø 4", 5", 6", 8", 10", 12 3/8"**

Airflow capacity: up to **871 CFM**

Sones: **7.14 - 11.5**

Power consumption: **106 - 293 W**

Suitable for airstreams up to **122° F**

IP X4 protection

Thermal overload protection

Mounting bracket and power cord included

Five year warranty

Contacts

Tel: 888-640-0925

513-348-3853

Fax: 513-268-4597

Sales@ventsus.com

VentsUS.com

11013 Kenwood Road, Cincinnati, Ohio 45242

VENTS-US reserves the rights to modify any of its products features, designs, components, and specifications at any time and without notice to maintain the development and quality of manufactured goods.



Flow Chart Graphs can be viewed at www.vents-us.com/cat/684/

2017/05