

# Hang Kit

Part No. 4036695

## Parts Included:

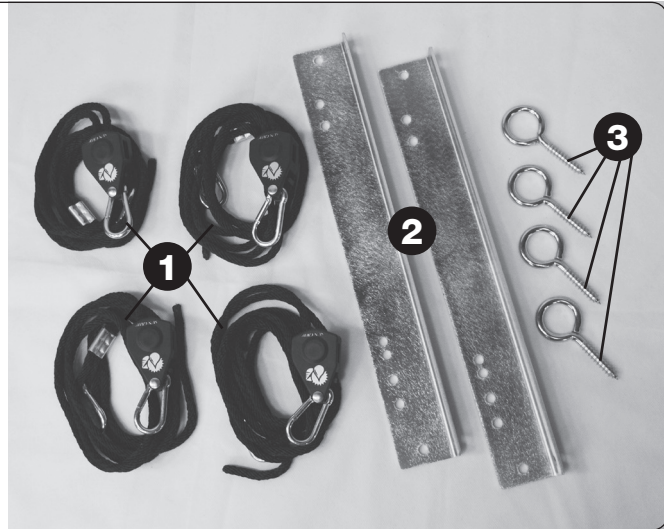
1. (4) Ratchet Straps
2. (2) Brackets
3. (4) Eye Bolts (3/8 x3-7)

## Tools Required:

- Tape Measure
- Level
- Screw Driver (Phillips or Regular) to use as leverage for Eye Bolts
- Screws for TJI joists (only applies if you have TJI joists)

## Optional Tool:

- Power Drill with 1/4" Drill Bit (to pre-drill Eye Bolt holes)



## ⚠ CAUTION!

MAKE SURE THE UNIT IS LEVEL AFTER INSTALLATION.

## Standard Joist Instructions

[SEE PAGE 3 FOR TJI JOIST INSTRUCTIONS]

**Step 1:** Gently tip the unit up on its back end in order to have access to the bottom foot holes.

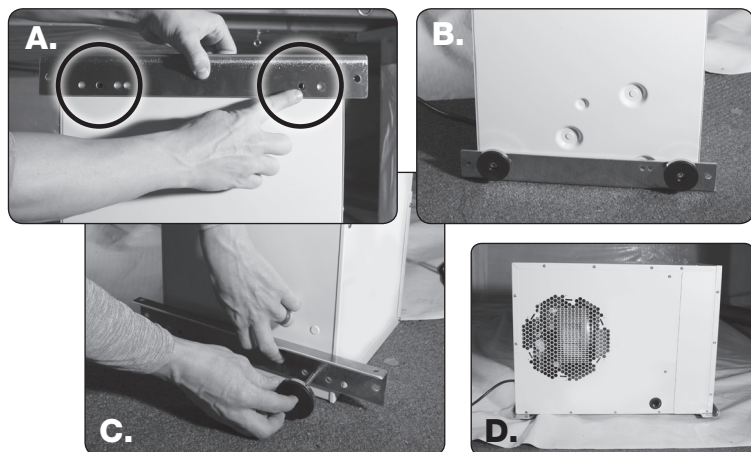


**Step 2:** Secure the brackets in place by using the leveling feet and the female threaded holes. (Leveling feet are packaged with the dehumidifier.) Line up the pre-drilled holes on the brackets with the leveling feet holes on the unit (Image A). Once lined up, screw in the leveling feet to secure the brackets to the dehumidifier (Image B).

If installing the hang kit on the 70 pint unit, turn the brackets over and secure them to the bottom of the dehumidifier using the pre-drilled holes and leveling feet. (Image C).

There are four leveling feet to screw in on each dehumidifier.

Once in place, gently tip the unit back down on the leveling feet with the brackets in place (Image D).



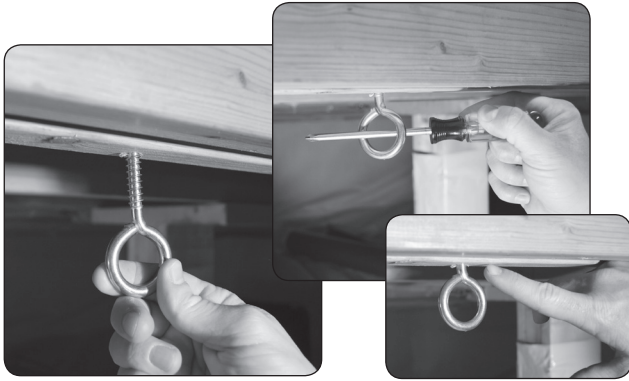
**Therma-Stor**

4201 Lien Rd Madison, WI 53704 • TOLL-FREE 1-800-533-7533 • www.thermastor.com • sales@thermastor.com

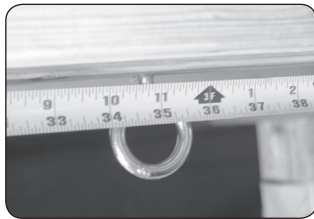
TS-930 5/17/16

OVER →

**Step 3.** Determine the placement of the unit and turn / screw your first eye bolt into position on the bottom of the floor or rim joist. Use a screw driver as leverage to tighten the eye bolt. Screw in until the threads are no longer visible.

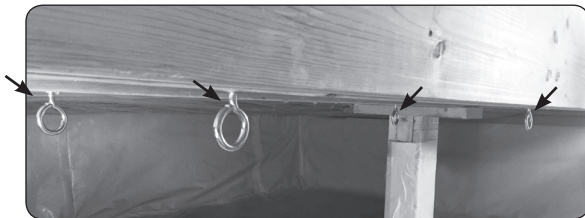


**Step 4:** Distance the second eye bolt 35" away from the first eye bolt on the same joist and screw into place.



**Step 5:** Use the remaining two eye bolts on the joist parallel to the joist used for the first two eye bolts. Eye up the location of the remaining two eye bolts and position them straight across from the first two eye bolts used in steps 3 and 4. The placement should be close but does not need to be precise.

Be sure to keep 35" of space between the two eye bolts on each joist.



**Step 6:** Position the unit directly below the eye bolts. Attach the four ratchet straps to the pre-drilled holes on the hang kit brackets using the non-ratchet clip end.



**Step 7:** Using the ratchet end of the ratchet strap, attach each strap to the eye bolts above the unit. If additional slack on the rope is needed, push the trigger on the ratchet end of the strap up and feed the rope through as needed.



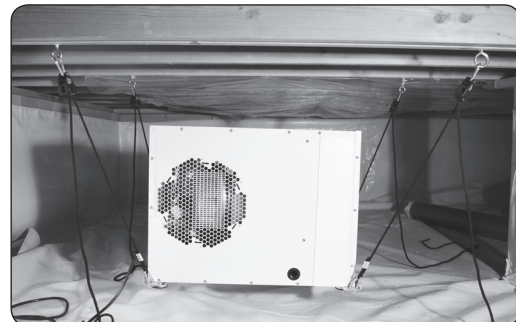
**Step 8:** Pull down on the ratchet rope, lifting the unit in place. We recommend pulling down on each individual ratchet rope 6-12 inches at a time until level.

### ⚠ CAUTION!

**MOVING THE STRAPS TOO QUICKLY CAN CAUSE THE UNIT TO ROCK AND TIP.**



Simultaneously pull up on the rope attached to the unit and down on the ratchet rope for better results.



# TJI Joist Instructions

## ⚠ CAUTION!

SCREWING THE EYE BOLTS DIRECTLY INTO THE BOTTOM FLANGE ON THE TJI JOIST WILL WEAKEN THE STRUCTURAL INTEGRITY OF THE JOIST.

When working with TJI floor joists, follow the standard instructions on the previous pages but factor in the following modification listed below:

A 2"x4" piece of wood can be cut to fit between two joists. Standard floor joists are 16" o.c. (on center) apart from one another. Measure and cut the 2"x4" accordingly to fit as shown in the diagram below. The 2"x4" will sit on the top side of the bottom flange and can be screwed in place with a few screws working through the web of the joists and into the 2"x4". The eye bolt will then be screwed into the 2"x4".

