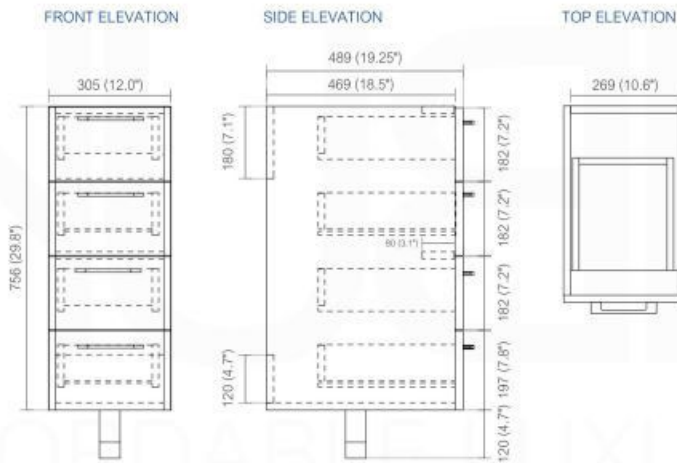
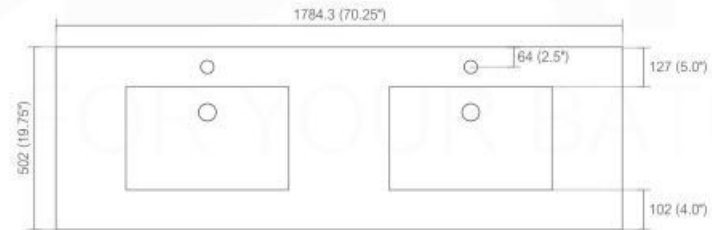


ANZIANO 72" DOUBLE SINK BATHROOM VANITY - SKU# ASL1572

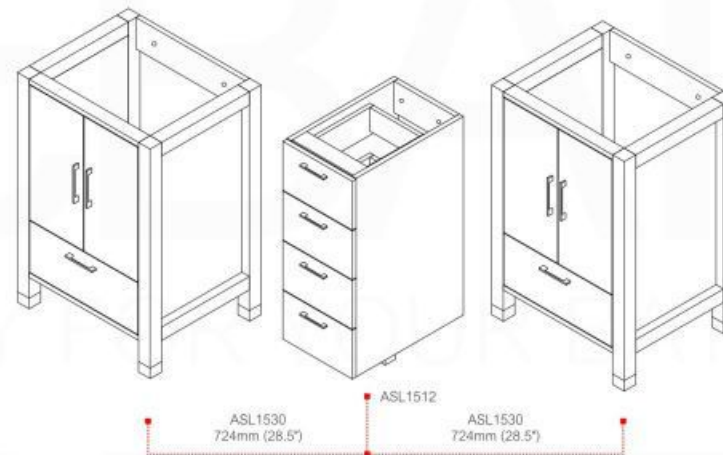


Discription:

- 18mm Thick MDO Construction Console w/ Four Doors and Six Drawers
- Integrated European Soft-Closing hardware
- Pure White Quartz Counter Top
- Hydraulic Hinges (more durable than spring activated)
- Open back, w/ 3.5" clearance behind drawers for easy plumbing access
- Matching Mirrors Available



SINK CUT OUT OPENING
400 (15.75"W) x 273 (10.75"D)



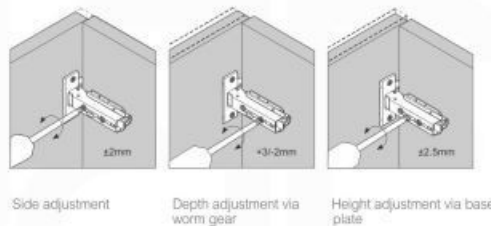
DETAILED MEASUREMENTS

- Floor to bottom of door
32.5cm | 12.79"
- Top measurements from left to right
- Edge to left faucet hole
37.5cm | 14.76"
- Left faucet hole to right faucet edge
103.5cm | 40.74"
- Right faucet hole to right edge
37.5cm | 14.76"
- Total length of top
178.5cm | 70.27"

Adjustments

The options for height adjustment depend on the type of base plate. All adjustments can be made independent of one another.

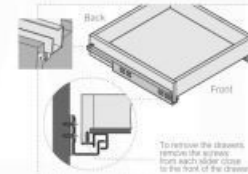
For depth adjustment, select base plates have worm gear adjustment access through the hinge arm.



Adjustments

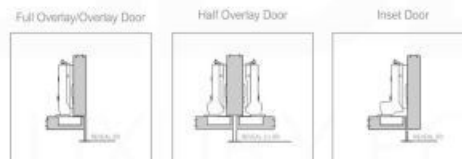
The options for height adjustment depend on the type of base plate. All adjustments can be made independent of one another.

For depth adjustment, select base plates have worm gear adjustment access through the hinge arm.



Reveal

The reveal (R) is the distance required between two doors or between the door and side wall of the cabinet to allow sufficient space for opening the door. The required reveal width (R) depends on the thickness of the door. Most cabinet makers prefer a reveal (R) of between 3mm and 6mm.

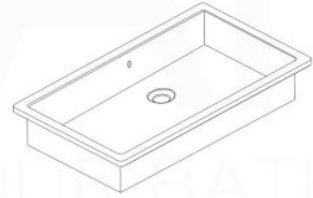


| Dimensions: | width | depth | height |
|-------------|-------|--------|--------|
| inches | 69" | 19.25" | 34.5" |
| mm | 1753 | 489 | 875 |

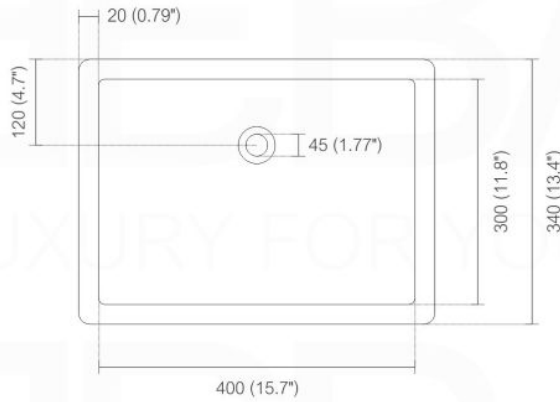
NOTE: DIMENSIONS AND TECHNICAL DETAILS ARE SUBJECT TO CHANGE WITHOUT NOTICE

All rights reserved. The authors retain all copyrights in any text, graphic images and photos in this book. No part of this publication may be reproduced or transmitted in any form or by any means, electronic or mechanical, including photocopying, recording, or any information storage and retrieval system, without permission in writing from the authors.

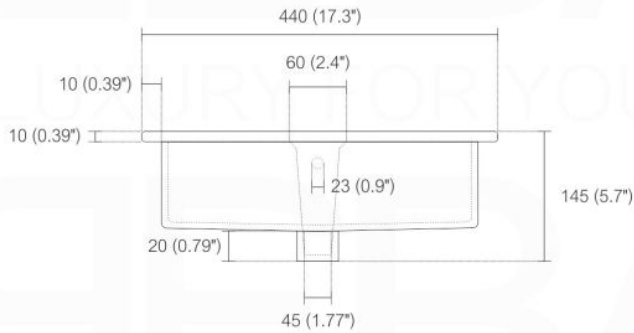
SQUARE UNDERMOUNT SINK KB16



TOP ELEVATION



FRONT ELEVATION



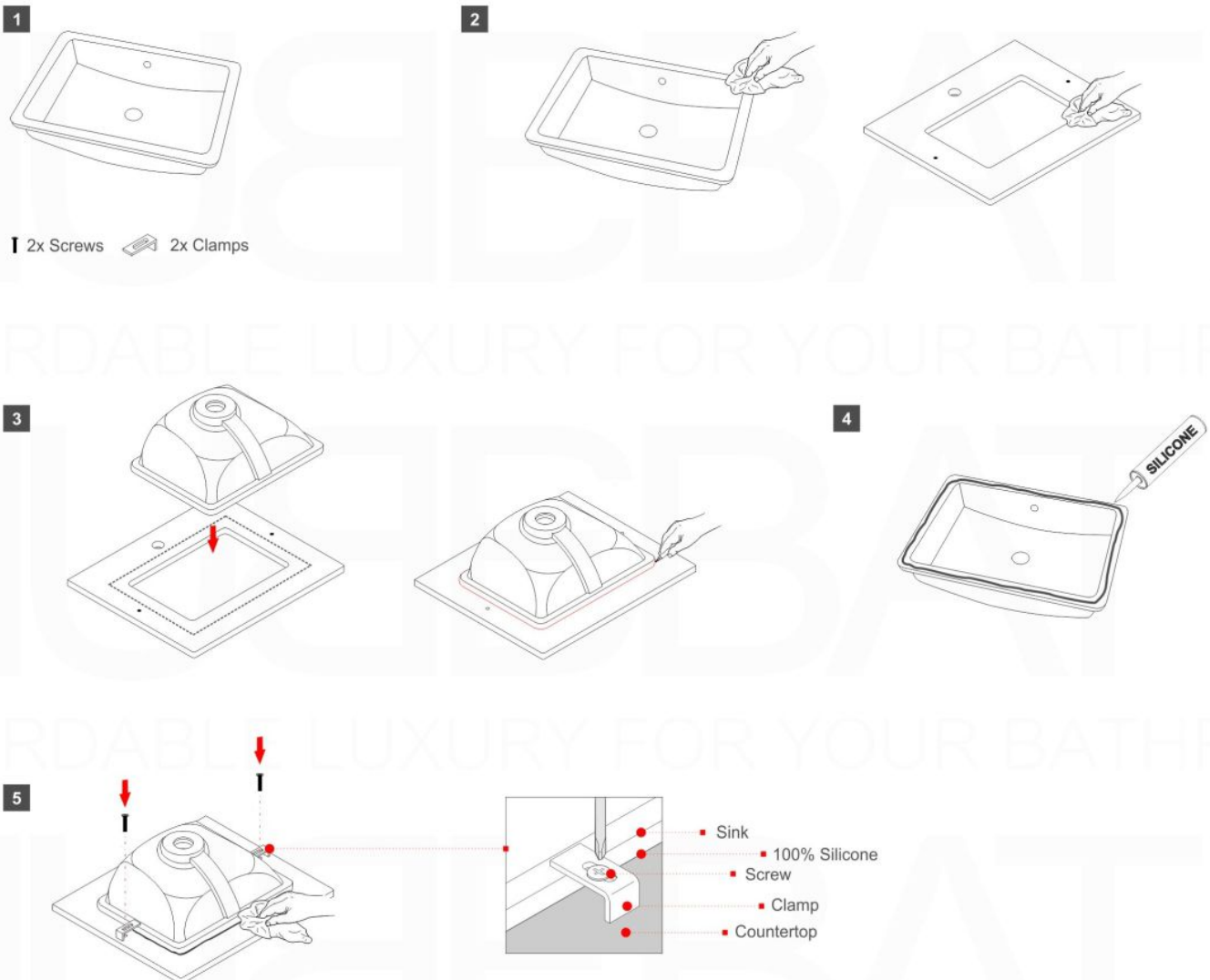
SIDE ELEVATION



UNDERMOUNT SINK - INSTALLATION

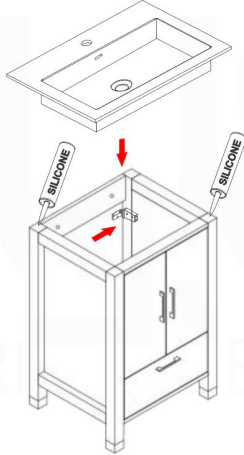
1. Unpack the new sink and check the contents of the materials supplied.
2. Clean the underside of the countertop and the rim of the sink.
3. Use actual basin as your template. Place it upside down on countertop by tracing edge of basin. Be sure to allow clearance for faucet and other accessories or fixtures.
4. Generously apply 100% silicone sealant around the rim.
5. Position the sink under the opening and install the clamps.
 * Use level to make sure that the basin is sitting level in all directions , front to back and side to side, while pressing down to seal. Carefully remove any excess silicone.
 * Leave to cure for 24 hours before removing the clamps.

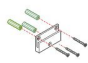
Note: Sink style, shape, cutout on top may vary from the picture above. Instructional purposes only.



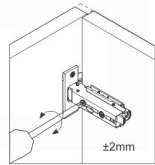
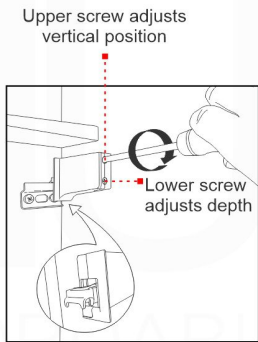
How to Install an Anziano Vanity | Remove / Install Drawers | Adjust Doors

INSTALLATION GUIDE

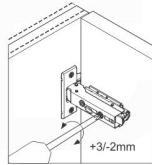


1. Determine your vanity placement and mark the area on the wall where it will be installed.
2. Locate and mark the location of the studs to which you will fasten your vanity. You can find studs by listening for a solid sound as you knock on the wall or by using a stud finder.
3. If your vanity cabinet has a solid back, mark and drill holes to accommodate drain pipes and supply pipes as necessary.
4. Mark the location of each of the wall mounting plates ensuring that they are positioned inside the sidewalls of the vanity unit. 
5. Place the vanity in the installation location. Verify that the vanity cabinet is level. If the vanity is not level, use vanity feet (if included) or wooden shims to adjust as necessary.
6. Install the integral sink/vanity top by applying a dot of silicone sealant on the corners of the vanity. Position the vanity top onto the vanity and press firmly into place. Wipe away any excess sealant with a damp cloth.

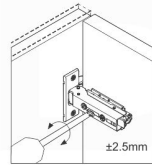
Note: We recommend consulting professional help if you are unfamiliar with installing bathroom vanities and/or plumbing.



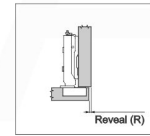
Side adjustment $\pm 2\text{mm}$



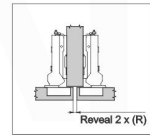
Depth adjustment via worm gear $+3/-2\text{mm}$



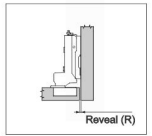
Depth adjustment via worm gear $\pm 2.5\text{mm}$



Full Overlay/Overlay Door **Reveal (R)**



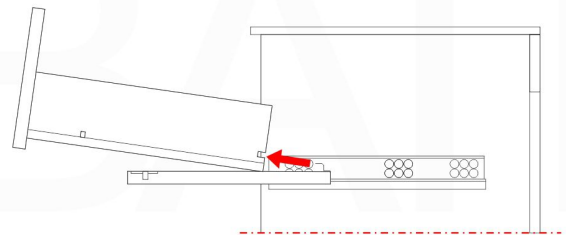
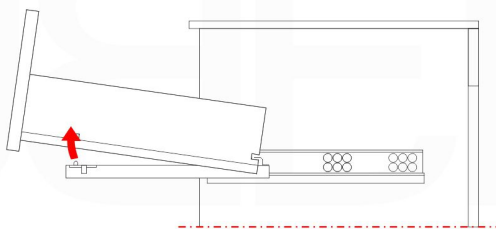
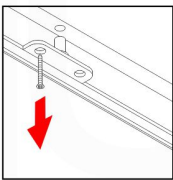
Half Overlay Door **Reveal 2 x (R)**



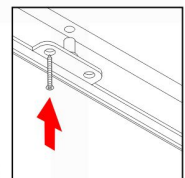
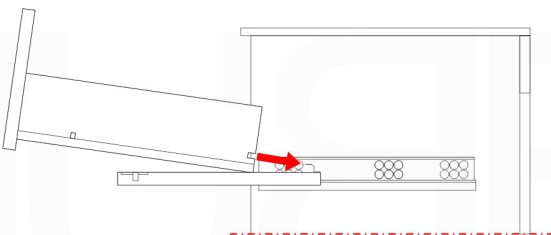
Inset Door **Reveal (R)**

REMOVE DRAWERS

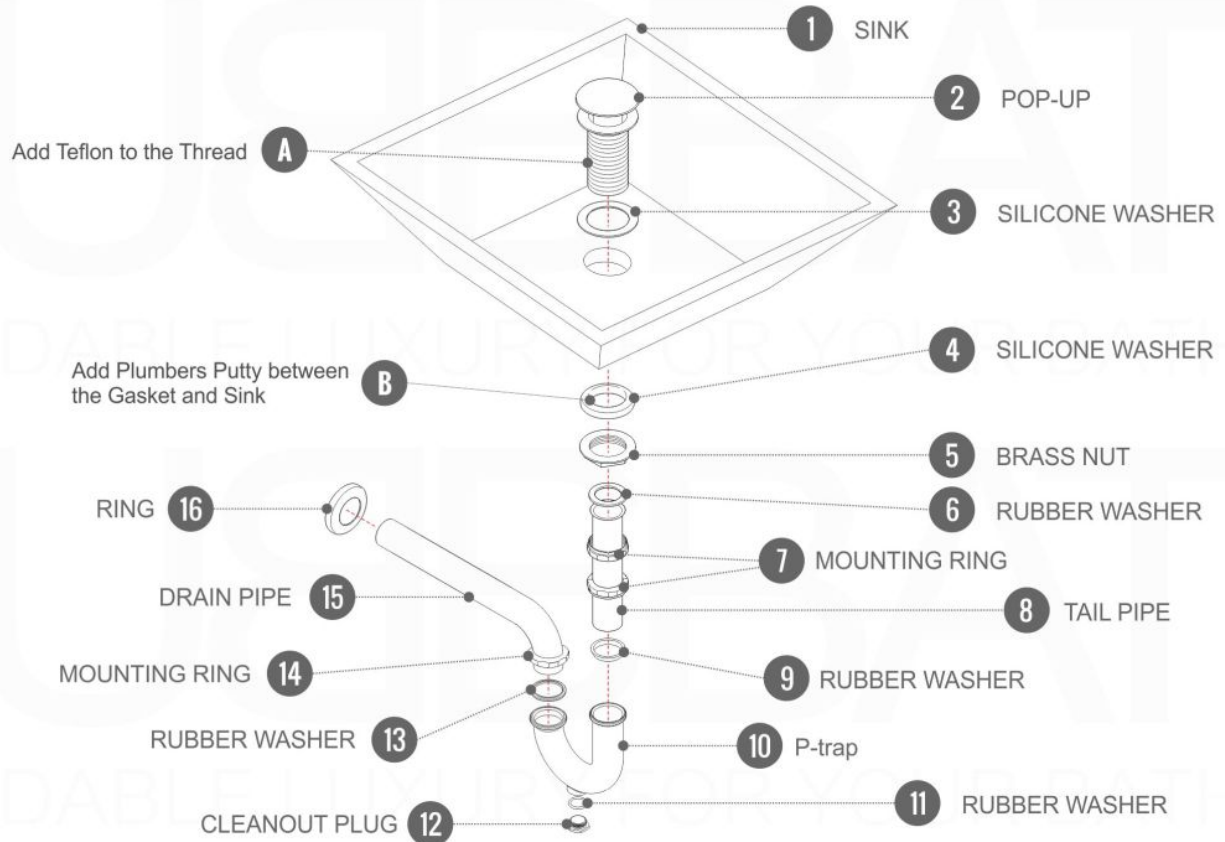
(Locate the screws on the bottom of the drawer)



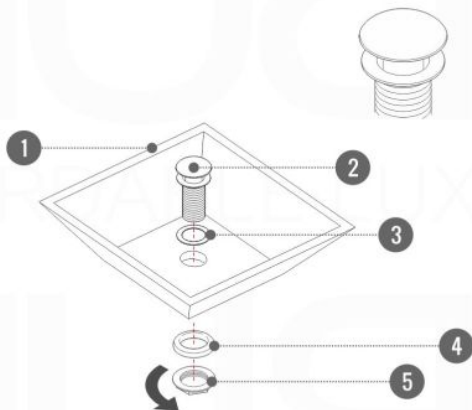
INSTALL DRAWERS



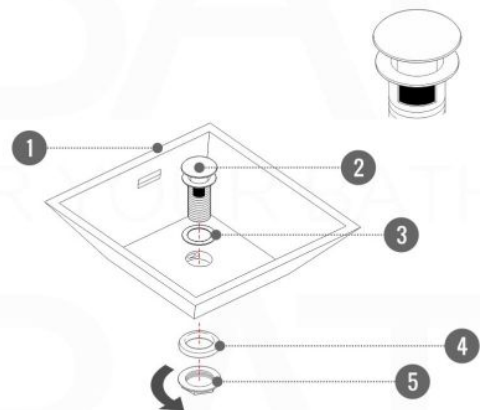
Pop-Up / P-trap Installation Instructions INSTALLATION GUIDE



FOR SINKS WITHOUT OVERFLOW
#SKU: P101N / P102N



FOR SINKS WITHOUT OVERFLOW
#SKU: P101 / P102



OR