

# 1/2" PEX Crimp Elbow Inlet

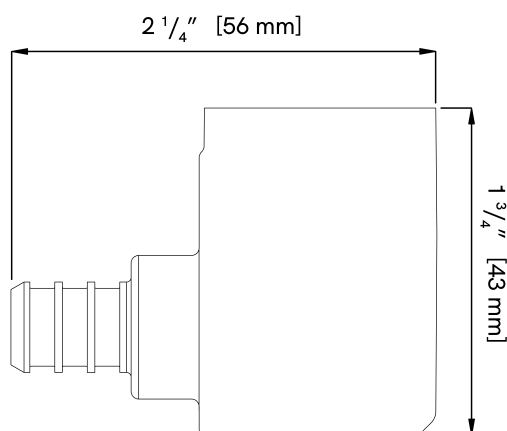
INL-EL-12-PEX-CR



This inlet replaces the default hydrant inlet with a 1/2" PEX Crimp connection. Quickly and reliably connect your Aquor hydrant to 1/2" PEX tubing for an easier installation. The elbow inlet shortens the overall length of the hydrant by 1/2".

Precision-cast 316L stainless steel. Includes stainless steel valve reset spring.

- For use with 1/2" PEX tubing, clamp or crimp rings
- Replaces the back end (inlet) of your Aquor hydrant
- 100% lead-free 316L stainless steel
- Positionable up to 360° from full lock in any direction



Compatibility	All Aquor hydrants and outlets except the Ground Hydrant
Inlet Threading	1/2" PEX Crimp
Outlet Threading	Unique to Aquor hydrants and outlets
Connection Type	PEX Clamp/Crimp
Material	Stainless Steel
Specification	ASTM F1807
Warranty	10 Years
SKU	INL-EL-12-PEX-CR

# 1/2" PEX Crimp Elbow Inlet

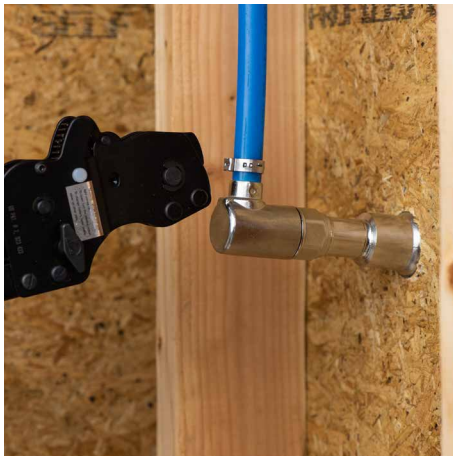
INL-EL-12-PEX-CR

## Installation



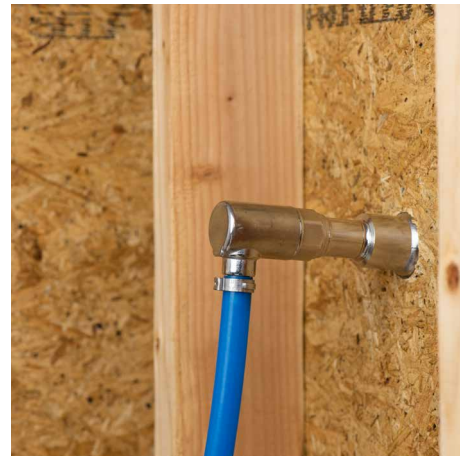
1) Remove existing inlet by unscrewing counterclockwise. Ensure the O-ring on the hydrant body is properly seated.

*Note: DO NOT use Teflon tape on hydrant body threads. This may cause leaks. Only use Teflon tape on plumbing connection (fitting) threads.*



2) Hand tighten new inlet on hydrant body by threading clockwise.

*Note: Elbow inlets can be positioned in any direction by rotating counterclockwise. The O-ring will keep a watertight seal up to 360° from full lock, up to 250 PSI.*



3) Attach to PEX tubing using appropriate tool and clamp or crimp ring. Check for leaks and test the hydrant operation.

For PEX joints, wait 10 minutes for it to shrink down and set before turning on the water.

If possible, use an expansion loop of PEX for easy plumbing maintenance down the road.