

How to import pedigree (ancestry) into APS Professional (v2.xx)

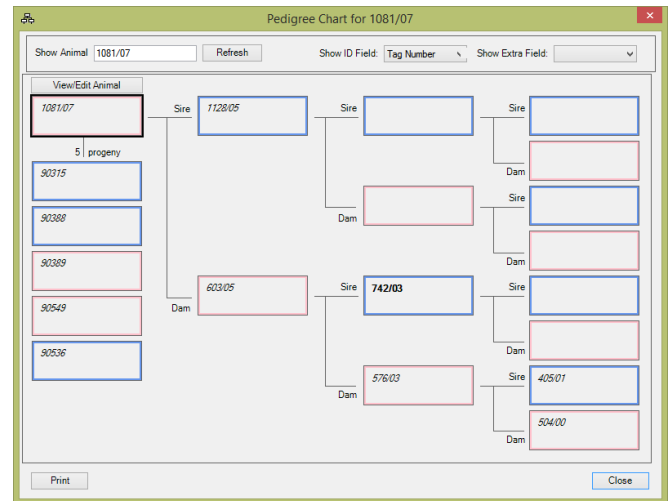
Introduction

APS Professional (comes free with the TSi or available as a purchased \$995+tax upgrade from APS Standard) can display animal pedigree charts on your PC.

On the TSi – the pedigree charts can be seen on the TSi screen. I.e. while you are on-farm, with the animal standing in front of you – to help you make decisions on breeding, treatment, sale value, cull, etc. On other weighscale & EID readers, the dam & sire can be displayed on-screen.

The chart can also display additional information on each animal, e.g. breed, or EBV, or velvet yield, etc.

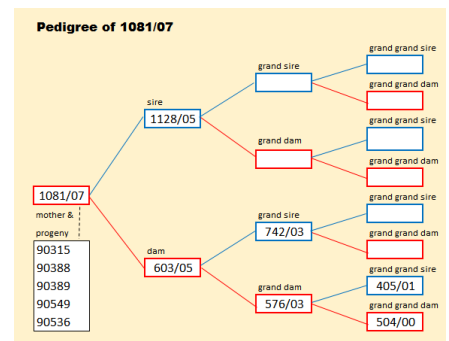
This helpsheet shows how it is easy to import existing pedigree (ancestry) data for animals, from Excel.



STEP 1:

Prepare data in Excel

- Prepare a simple Excel file with 3 fields for every animal. The field headings should be **"Tag No", "Dam", "Sire"**
 - Animal visual ID
 - Visual ID of Animal's dam, Visual ID of Animal's sire
- Type in (or copy/paste) the visual IDs of the animals. If Excel isn't recording them correctly (eg changing them to a date), type an apostrophe ' in front of the ID eg '12/05
NB. that all 3 of these visual IDs must conform to APS restrictions.
 Often this requires some reworking of the Excel data, in order to make it able to be imported:
 - Must be upper case letters and digits
 - Some punctuation is allowed: dash "-", slash "/", dot "."
 - Maximum 16 letters/numbers/punctuation
 - No spaces in the IDs (eg change "SIR TRIST" to "SIR.TRIST")
- (optional) you can also record columns for **Breed, Colour**
- (optional) record a column for **Sex**, with one of the values:
 - female, f, desexed female, heifer, hind, ewe, e
 - male, m, desexed male, steer, bull, stag, m, ram, r
- The 'dams & sires' should each have a line in this Excel file (even if they are not on-farm), otherwise you won't be able to view the pedigree charts for the 'dams & sires'
- 'Grand dams & sires' can also be individual lines in the Excel file, even if you don't know their dam and/or sire, otherwise you won't be able to view the pedigree charts for the 'grand dams & sires'. The same applies for 'great grand dams/sires'.



Excel:

Tag no	Dam	Sire	Sex
1081/07	603/05	1128/05	Female
1128/05			Male
603/05	576/03	742/03	Female
576/03	504/00	405/01	Female
405/01			Male
504/00			Female
90315		1081/07	Male
90388		1081/07	Male
90389		1081/07	Female
90549		1081/07	Female
90536		1081/07	Male

CSV:

```
"Tag no","Dam","Sire","Sex"
1081/07,603/05,1128/05,Female
1128/05,,Male
603/05,576/03,742/03,Female
576/03,504/00,405/01,Female
405/01,,Male
504/00,,Female
90315,,108/07,Male
90388,,108/07,Male
90389,,108/07,Female
90549,,108/07,Female
90536,,108/07,Male
```

The names of the animals must conform to the APS restrictions. This might mean that the IDs in APS are slightly different (e.g. abbreviated) from the names in a breed society register. It can be useful for the original breed society ID/name to be recorded in APS as a custom life data field so it can be displayed on reports and exported to CSV.

Note: If this preparation of data in Excel is taking you a long time (hours or days), be sure to frequently save your work!

STEP 2:

Save data into APS format

When you have completed editing your list of data in Excel, save the file in **CSV** format:

- a) **File > Save** (to first save it in Excel format)
- b) **File > Save-As**
 - Choose a location on your computer, where you will be able to easily find the files (e.g. 'desktop')
 - Change "Save as type" to "**CSV (Comma Delimited) (*.CSV)**"
 - Click **OK** when asked "The selected file does not support..."
 - Click **Yes** when asked "...may contain feature that are not compatible..."
- c) **File > Exit**
 - Click **Don't Save** when asked "Do you want to save changes"

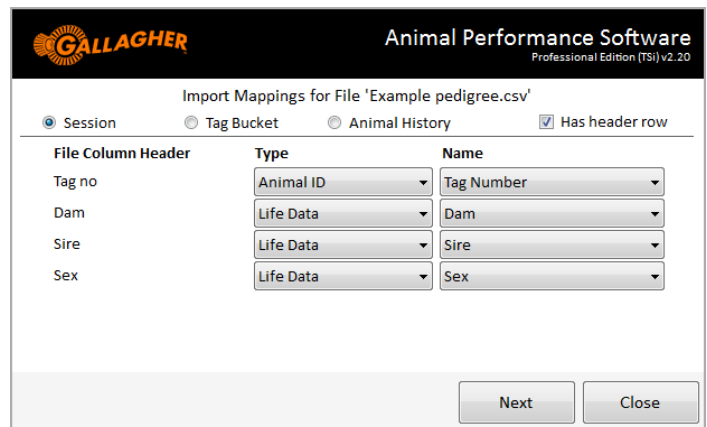
STEP 3:

Import into APS, as a life data file

- 1) Run **APS**
- 2) **Import/Export**
- 3) Find the folder, where your files were saved by Excel (e.g. 'desktop')
- 4) Find the file you just created in Excel
- 5) Click on the filename



- 6) Click on the **[Import]** button
- 7) Select "(●) **Session**"
- 8) Tick " **Has header row**"
- 9) "Tag Number" is configured as "Animal Identification" "**Tag Number**"
- 10) "Dam" is configured as "**Life Data**" "**Dam**"
- 11) "Sire" is configured as "**Life Data**" "**Sire**"
- 12) (optional) "Sex" is configured as "**Life Data**" "**Sex**"
- 13) **Next**
- 14) Very important!
If your file doesn't have an EID# then be careful to choose "**Identify animals using Tag Number**"
- 15) **Next**
- 16) **Import**
- 17) **Close**



File Column Header	Type	Name
Tag no	Animal ID	Tag Number
Dam	Life Data	Dam
Sire	Life Data	Sire
Sex	Life Data	Sex

Buttons: Next, Close

Troubleshooting:

APS will fail to import any animals that have and invalid information in the CSV file.

To view the import failures, look in the CSV file (in the same directory as your CSV file) called "...not imported".

The right hand column will show you the reason that the animal failed to import,

e.g.: **Invalid Tag '603/ 05'. Must contain only valid Tag characters**

If the CSV file that Excel created appears with semicolons instead of commas, you need to change the Windows setting for "List Separator".

- Start > Control Panel > Region > Additional Settings > List Separator

If this setting is not currently a comma, please change it to comma.

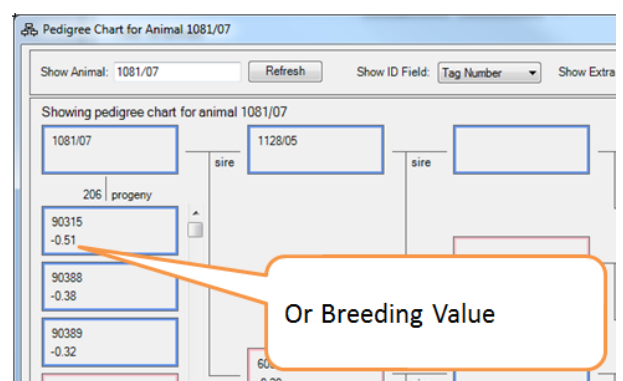
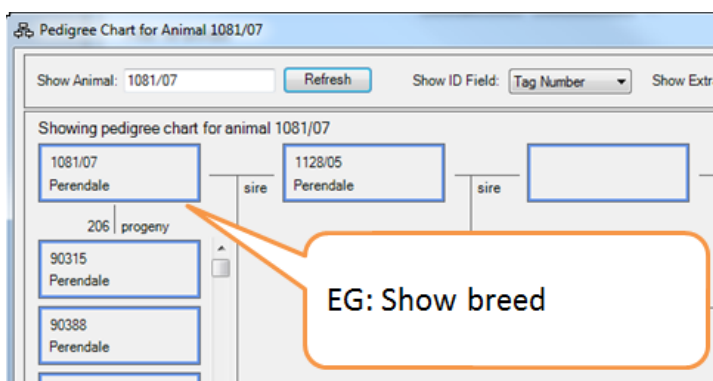
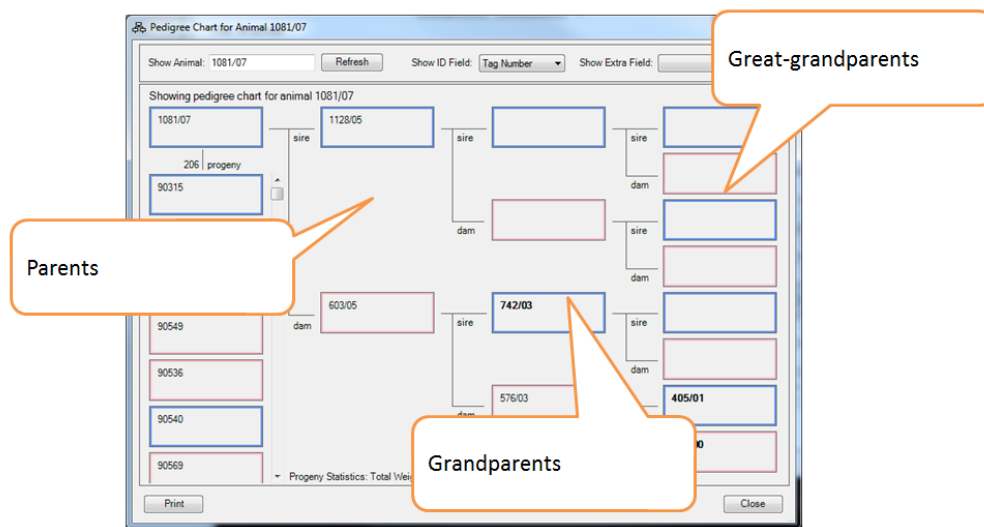
STEP 4:

View pedigree tree, to check information

In APS Office (part of APS Professional), the pedigree chart can be displayed by selecting an animal, then Right-Click to choose **Show in pedigree chart**.
The pedigree can also be displayed via the “Animal” menu.

On the Gallagher TSi weighscale, it is also possible to view the pedigree chart for an animal, by clicking on the **Pedigree** button on the “Yard screen”

When displaying the pedigree chart, additional information about the animal can be displayed, e.g. breed, an EBV, birth rank, velvet yield, etc. An average & total for the displayed information will appear on screen (if it is numeric information).
To find out more information on an animal shown in the pedigree chart (e.g. a grand sire), click on that animal's name. Then the pedigree chart will redraw, and all the progeny for the animal will appear to the left.



Pedigree chart notes:

The way an animal's tag is displayed, hints at the status of the animal.

Bold = sold/dead/not in system *Italic* = status unknown

Alternative method for TSi users:

If you have just a small number of animals, you might find it easier to enter data on TSi yard screen.

Use the following buttons on the TSi Yard/Collect screen:

- Pedigree:** to view the pedigree chart for the current animal, i.e the one named at top left of screen
- Find Tag:** this will create a new animal, if the tag you enter is not already in the system
- Change Life Data:** enter the dam & sire here. NB. You can't enter grand dam & grand sire this way, instead what you need to do is add the Dam & Sire as 2 separate animals, and then enter **their** dam & sire. These animals will then appear on the pedigree chart as grand dam & grand sire for the progeny of the animals you are entering pedigree records for.

What's good about this method, is that it allows you to focus on getting pedigree information correct, one animal at a time – useful if you are entering data from printed pedigree charts.

If your Excel file has columns for Grand Sire, Grand Dam, etc

Tag	Dam	Sire	Grand Dam 1	Grand Sire 1	Grand Dam 2	Grand Sire 2
1081/07	603/05	1128/05	576/03	742/03	UNKNOWN	UNKNOWN

You will need to rearrange the data, so it is a list of animals (one per line), including those without known parentage.

This is easily done in Excel, with careful copy/paste of data.

Tag	Dam	Sire
1081/07	603/05	1128/05
603/05	576/03	742/03
1128/05	UNKNOWN	UNKNOWN

