



ARGOS

ARGOS FRAGRANCES COLD AIR DIFFUSER

We advocate green environmental protection, refuse over-packging.

PRODUCT MANUAL

AFCAD 1001D

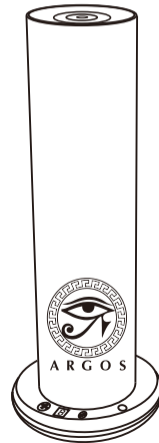


TABLE OF CONTENTS

NOTES -----	1
SPECIFICATIONS -----	2
APPLICATION ENVIRONMENT -----	3
OVERVIEW -----	4
WHAT'S INSIDE THE BOX -----	5
FILLING FRAGRANCE -----	6
USE METHODS -----	7
OPERATIONS -----	8
INSTALLATION INSTRUCTIONS -----	9
WARNING -----	11
EQUIPMENT CLEANING -----	12
TROUBLE SHOOTING -----	13

We advocate green environmental protection, refuse over-packging.



NOTES

Please comply with the following for safety reasons.



Do not modify or disassemble the scent machine without first consulting us.
In case of product failure please contact us.



Do not use the power chord if it is damaged, kinked or cut. It's a fire hazard.



To avoid electrical shock, do not touch the power adaptor or the machine while plugged into the electrical socket during a thunderstorm or lightning.

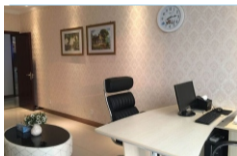


Do not dismantle or try to repair the machine while its plugged into the electrical outlet or in operation.

SPECIFICATIONS

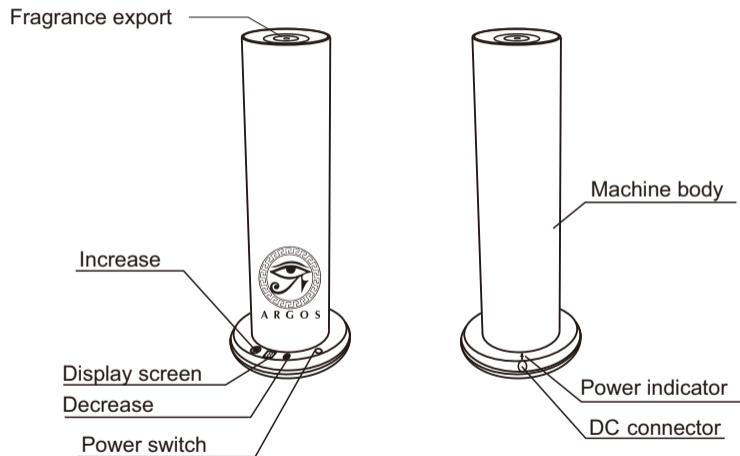
【 Model 】	AFCAD 1001D
【 Dimension 】	112*112*288mm
【 Voltage 】	DC 12V
【 Weight 】	1.4kg
【 Power 】	5W
【 Coverage 】	200m ³
【 Bottle capacity 】	120ml
【 Material 】	Machine:aluminum Bottle:PET
【 Accessories 】	Power adapter, bottle, manual

APPLICATION ENVIRONMENT

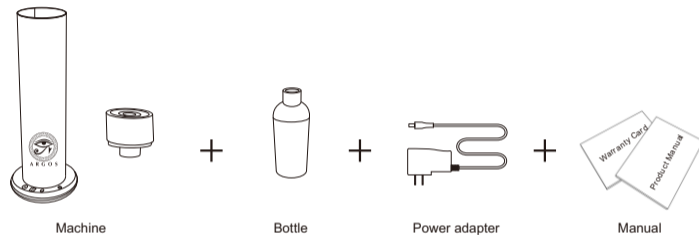


Office, Family house, VIP room, Guest room and other small places.

OVERVIEW

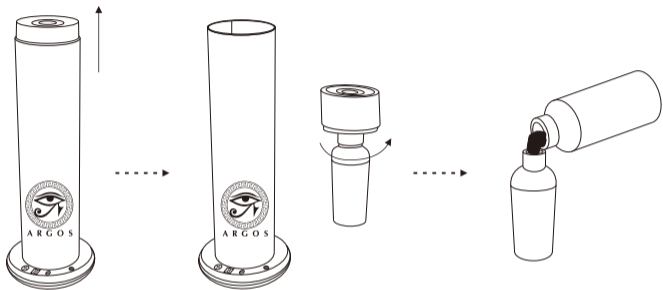


WHAT'S INSIDE THE BOX



Checking and make sure the packaging is complete when you first open it, if any problem please contact with us soon.

FILLING FRAGRANCE



1. Press on the top cover to open the machine.
2. Take out the top cover with diffusion head and bottle.
3. Unscrew the bottle.
4. Fill the bottle with fragrance.
4. Fill the bottle with fragrance. Do not fill to the top.

OPERATIONS

Power ON

Connect with 12V 1A power supply, short “beep” –power-on voice comes out, the screen displays scent intensity.

Power OFF

Press ⊖, no display on panel.

Intensity setting

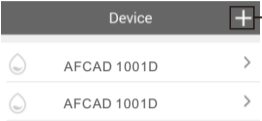
The machine total has 9 fragrance intensity grades, press ⊕, the intensity will increase, press ⊖, the intensity will decrease (Figure 4).

Power indicator

⚡ indicating the direction of the power supply.



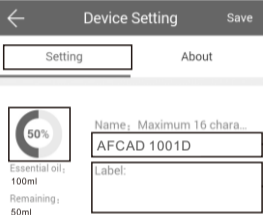
Instructions



Device + Add device
IOS shows

AFCAD 1001D >
AFCAD 1001D >

↓



Device Setting Save

Setting About

50%
Essential oil:
100ml
Remaining:
50ml

Name: Maximum 16 chara...
AFCAD 1001D Amend device name

Label: Remarks: location

Android system:
Delete working period ←
IOS :
slide left to delete™ ←

07:00-21:00 Grade: 09
Mon Tue Wed Thur Fri Sat Sun

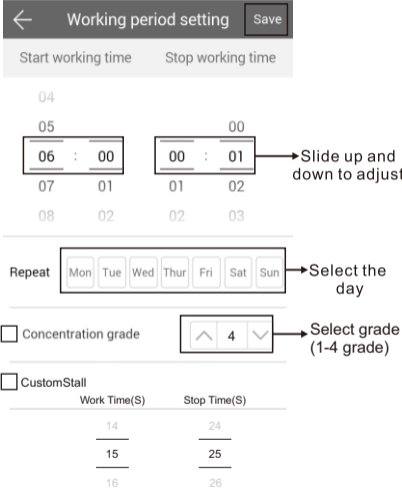
+ Add working period

Time switch

(PS: There are 5 working periods available to be set.)

After adjusting grade,
please save it BEFORE
going back to the home
page.

Instructions



Working period setting Save

Start working time Stop working time

04
05
06 : 00
07 01 00 : 01
08 02 02 03

Slide up and down to adjust


Repeat Mon Tue Wed Thur Fri Sat Sun Select the day

Concentration grade Select grade (1-4 grade)

CustomStall

Work Time(S)	Stop Time(S)
14	24
15	25
16	26

Please slide here to adjust working and pause seconds




Device control

Set About

PCB Version: GZZ1-030_V2.00
Equipment version: GZZ1-030_V2.00
APP version: A.V2.0.0

Change password OAD Upgrade

↓



Change password

The new password

Confirm password

Change password

If you forget the password, please press the reset button to restore the factory settings. The factory settings password is 8888.

INTENSITY AND CONSUMPTION

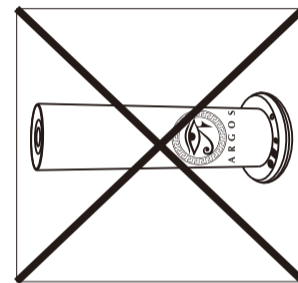
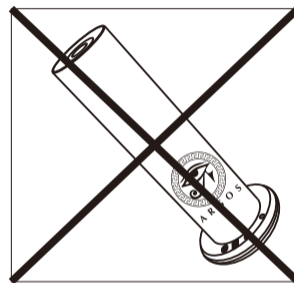
Grade	Working(s)	Stop(s)	Consumption(ml/h)
G1	30s	270s	0.07
G2	60s	240s	0.13
G3	90s	210s	0.20
G4	120s	180s	0.27
G5	150s	150s	0.33
G6	180s	120s	0.40
G7	210s	90s	0.47
G8	240s	60s	0.53
G9	270s	30s	0.60
Customized	Customized	Customized	

+ up grade - down grade

Note:1. Above data is based on standard test oil.

2. Above data only for reference,different oil may with different consumption.

WARNING



After installation, please keep the machine vertical. Tilted or angled may cause oil overflow, which will contaminated equipment circuit, affecting the normal use and unnecessary waste.

EQUIPMENT CLEANING

Equipment cleaning

1. When changing oil clean out the diffuser.
2. If scent diffusion comes weak.

Cleaning steps:

1. Put 50-100ml alcohol in the bottle.
2. Screw the bottle into the diffuser and turn the machine ON 5-10 mins to clean out the diffuser head and tube.
3. Take off the alcohol bottle and replace with the bottle with aroma oil.

Tips:

You can start using the scent machine immediately after cleaning. There is no need to mash the tube.

TROUBLE SHOOTING

Before asking to have the machine repaired please try to diagnose the problem first following to below instructions.

Problem	Solution
No diffusion	<ul style="list-style-type: none">- Check if the power is ON or OFF.- The pump is damaged and needs replacing.- If there is no diffusion or it is weak, replace the oil with rubbing alcohol and run it through the machine for 5 minutes.
Little or no spray coming out	<ul style="list-style-type: none">- Atomization head is blocked. Clean diffuser by running rubbing alcohol through it. Or replace diffuser core.- Diffuser core with straw is missing or damaged. Replace with a new one.- Pump is damaged and may need replacing.
Diffuser spraying liquid	<ul style="list-style-type: none">- Diffuser core is damaged. Replace diffuser core.- Machine is tilted or angled. Make sure it's upright at all times.
Oil leaking	<ul style="list-style-type: none">- Bottle is loose. Screw it in properly and straight.- Seal is broken or missing. Replace the supplied seal that came with the machine.
Abnormal sound	<ul style="list-style-type: none">- Pump is loose or damaged. Tighten the pump or replace.
No display on screen	<ul style="list-style-type: none">- Make sure the power is ON.- Check the plug for damage. Try another outlet. If plug is damaged replace.- Display screen is damaged. Replace.