

BENCH

## F603 FID BENCH



### F603 FID Bench CODE: CF603G



#### FEATURE

- Modern, compact, multi-purpose bench designed to work with Functional Trainers, Free-Weight Systems, and Dumbbells.
- Assist bar: can be used as a foot brace for rows or stabilizer assist for functional training exercises. Weight can also be added to serve as a ballast
- Integrated lift handle and transport wheels for easy maneuvering.
- 3 point stance provides stability on all surfaces.
- 6 different positions: adjusts from flat to incline- 0, 15, 30, 45, 60, 85 degrees.
- Recommended to use with the HFT & PFT Functional Trainer

#### SPEC

- Construction: 2" X 3", heavy-gauge steel tubing
- Upholstery: 2" thick high density foam, fully wrapped with double stitched industrial grade vinyl.
- Dimension: 72cm (L) x 127cm (W) x 41cm (H)
- Weight capacity: 363kg/800lbs

# BODYCRAFT

## BENCH



- The chrome steel assist handles provide stability during standing exercises.
- Or used as a foot brace during seated row exercises.

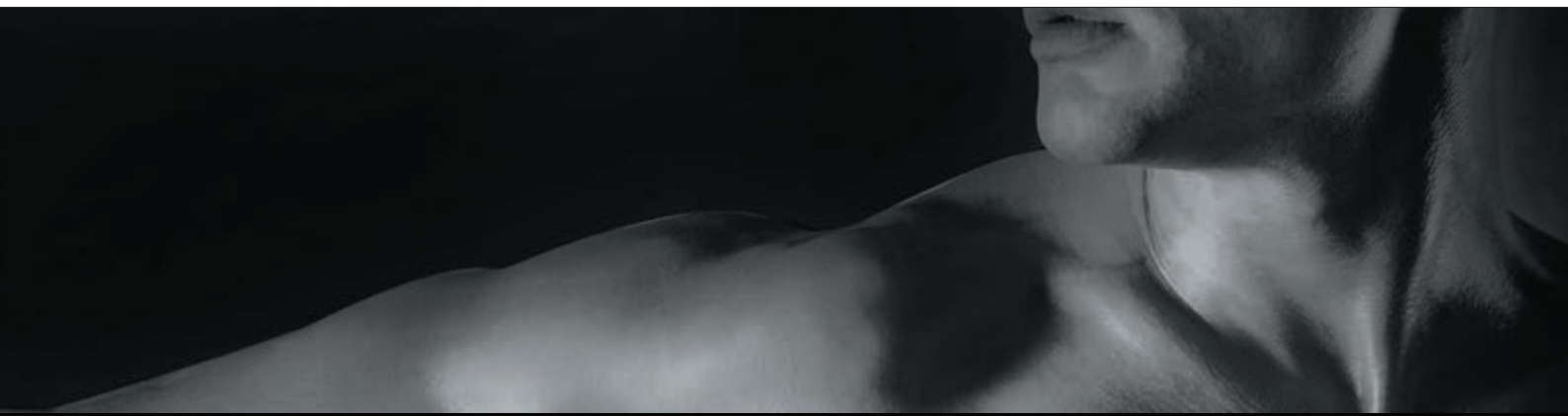


### Back Adjustment

- 6 different positions: adjusts from flat to incline- 0, 15, 30, 45, 60, 85 degrees.



### Transportation Wheel



**GPI** Sports & Fitness

[gpisports.com.au](http://gpisports.com.au)

**FREECALL 1800 334 898 | E: [customerservice@gpi.com.au](mailto:customerservice@gpi.com.au)**

Notice: Bodycraft reserves the right to improve or change product specifications and designs at any time.