



For YLK series only

**PROGRAMMABLE WATCH WINDER
OWNER'S MANUAL**

CATALOGUE

1. Introduction	2
2. Getting Started	3
2.1 Power	3
2.2 Pause Switch	3
2.3 Optional Plug	4
2.4 Watch Cuff	4
2.4.1 Specification	4
2.4.2 How to put your watch inside the cuff	5
2.4.3 Extra Patch / Cushion	5
3. Controls	6
3.1 Step 1 – LCD Touchscreen Control Panel	6
3.2 Step 2 – Remote Control	6
4. Features	7
4.1 Backlit Display	7
4.2 Fingerprint & Key Lock	7
4.2.1 How to set fingerprint account	8
4.2.2 How to delete/reset fingerprint account	9
5. Winding Programs	9
5.1 Winder Cycle Chart	10
6. Contact	10

Introduction

Congratulations on your purchase of this watch winder. Please review this quick start guide so that your automatic watch will benefit fully from the features that have been engineered into this product.

This appliance can be used by children aged from 8 years and above and persons with reduced physical, sensory or mental capabilities or lack of experience and knowledge if they have been given supervision or instruction concerning use of the appliance in a safe way and understand the hazards involved. Children shall not play with the appliance. Cleaning and user maintenance shall not be made by children without supervision. Appliance is only to be used with the power supply unit provided with the appliance.

2. GETTING STARTED

2.1 Power

This module fingerprint watch winder comes with a power adapter (AC/DC5.0-volt. 2A output)

Note: Never use any unauthorized power adapter.






2.2 Pause Switch

When you turn on the "pause switch" and open the front cover, all drums will immediately stop rotating. When you turn off the "pause switch" and open the front cover, all drums continue rotating. Your watch will always stop at the 12 o'clock position when the cycle is complete.



2.3 Optional Plug

Power supply: AC Adapter(US/UK/AU/EU)

Switching Power Supply					
MODEEXSC-0502000SEU	LPS				MADE IN CHINA
INPUT : 100-240V-50 / 60HZ 0.4A	LTE. POWER SUPPLY				FOR HOME OR OFFICE USE ONLY
OUTPUT : 5V === 2000MA					Shenzhen Sunshine Technological Co.,Ltd.



US Standard



EU Standard



UK Standard



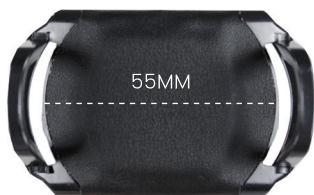
AU Standard

2.4 Watch Cuff

2.4.1 Specification

It can fit Max 53mm watch dial, watch thickness is up to 20mm, and the bracelet/wrist limited from 47 - 62mm.

Watch Dial	Dial Thickness	Bracelet / Wrist
0 - 53mm	0 - 20mm	47 - 62mm



2.4.2 How to put your watch inside the cuff



Step 1

Remove the cuff from the winder drum by pulling on the two tabs. Close the strap or bracelet of your watch. Compress the cuff, and slide your watch over the cuff, watch dial facing outward. Push the cuff into the drum until it locks into place, an audible click will be heard.

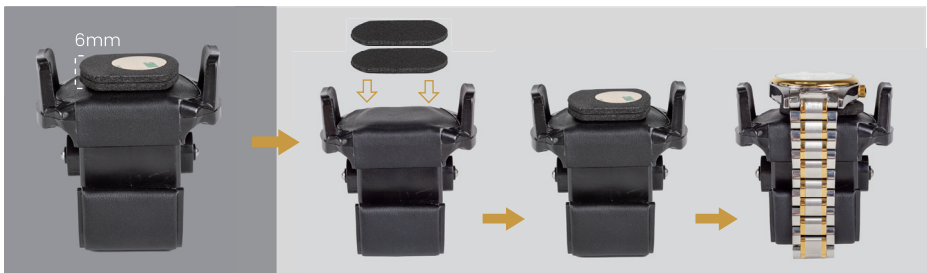
Note: Never insert or remove your watch when the drum is rotating.

Step 2

With the adapter connected, turn on the "Power Switch" to the "I" position. The display will be lit and you can set the programs by Touchscreen Control Panel or the Remote Control.

2.4.3 Extra Patch / Cushion

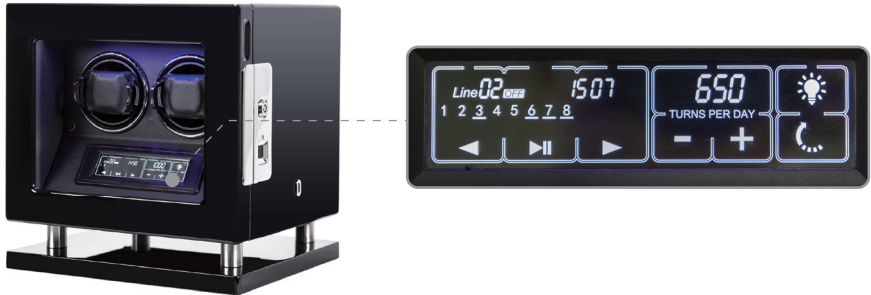
If your watch band is larger than 62mm in diameter, you can use our attached patch to increase the height of the watch cuff.



3. CONTROLS

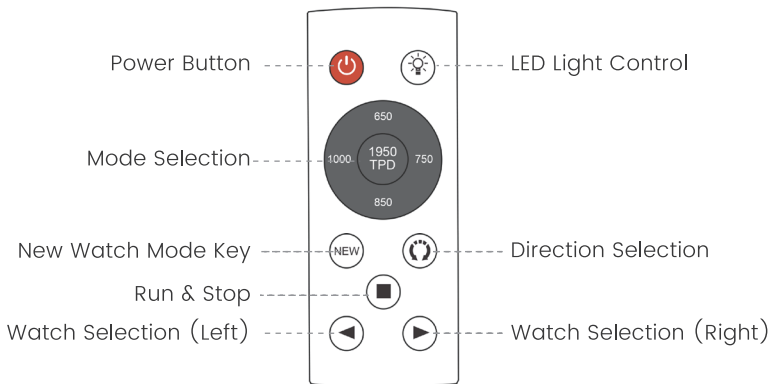
The module YLK winder has two control selection.

3.1 Step 1 - LCD Touchscreen Control Panel



Line 02	Number of the working watch	◀	Watch Selection (Left)
1 2 3 4	Number of the watch	⏸	Pause Switch
15:07	Time Display	▶	Watch Selection (Right)
650	TPD Display	💡	LED Light Control
- +	TPD Selection	↻	Direction Selection

3.2 Step 2 - Remote Control



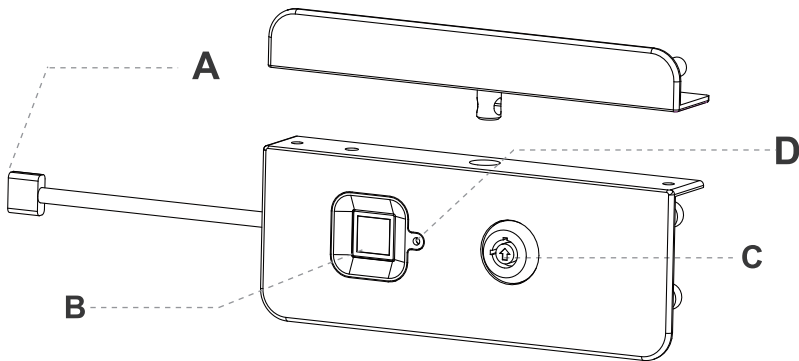
Note: New Watch Mode means: '-----', rotate for 4 hours and rest for 8 hours, then back to default setting when cycle complete or reset power.

4. FEATURES

4.1 Backlit Display

The LCD backlight assists users to read the LCD. It will be activated when the power switch on, either the front cover open or program have been manipulated. In order to save power, the backlight will automatically turn off when there is no input detected for about 10 seconds.

4.2 Fingerprint & Key Lock



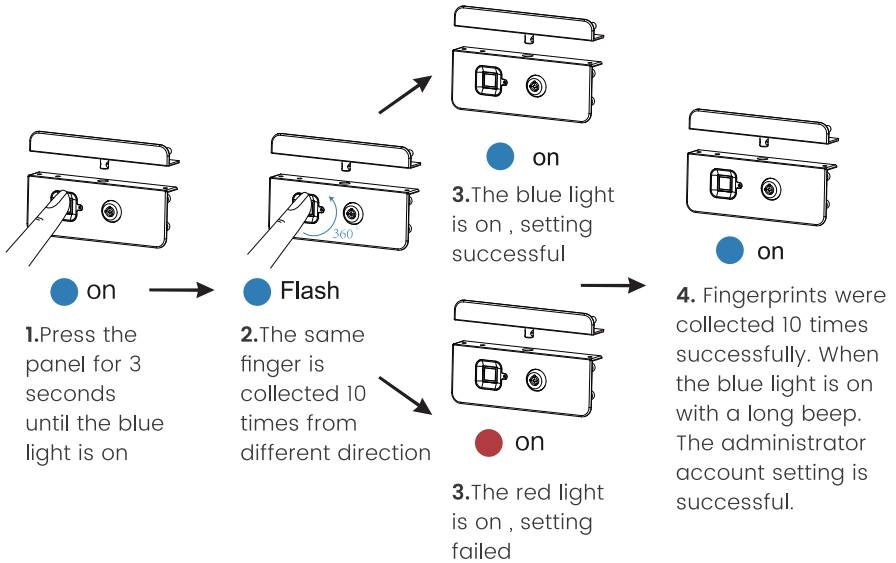
- A. USB type-C port: Charging the fingerprint lock for the first time.
- B. Fingerprint panel: Put your finger in here to identify.
- C. Key lock hole
- D. LED Status: There are two LED status, one blue and one red.

Note:

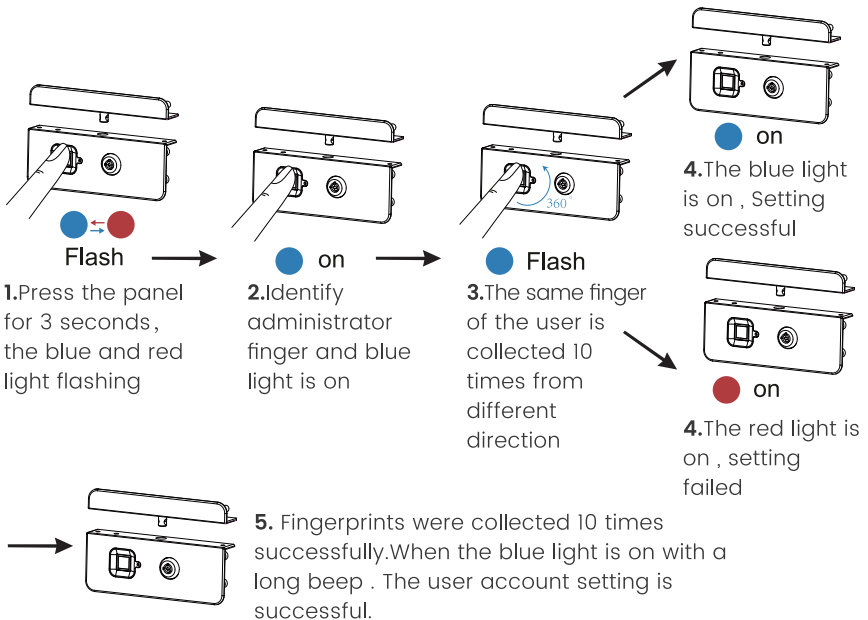
- The first fingerprint is defaulted to be administrator.
- It takes around 1.5 hours to be fully charged for the fingerprint lock, and the LED won't flash when it is fully charged.
- The administrator can set up to 10 fingerprint users.
- The 2~10 fingerprints setting need to be confirmed by administrator.
- When collecting fingerprints, the blue LED indicates fingerprint collection successful. The red LED indicates fingerprint collection fail. When deleting fingerprints, the red LED with a long beep indicates fingerprint deletion successful, the red LED flashing indicates fingerprint deletion fail.

4.2.1 How to set fingerprint account

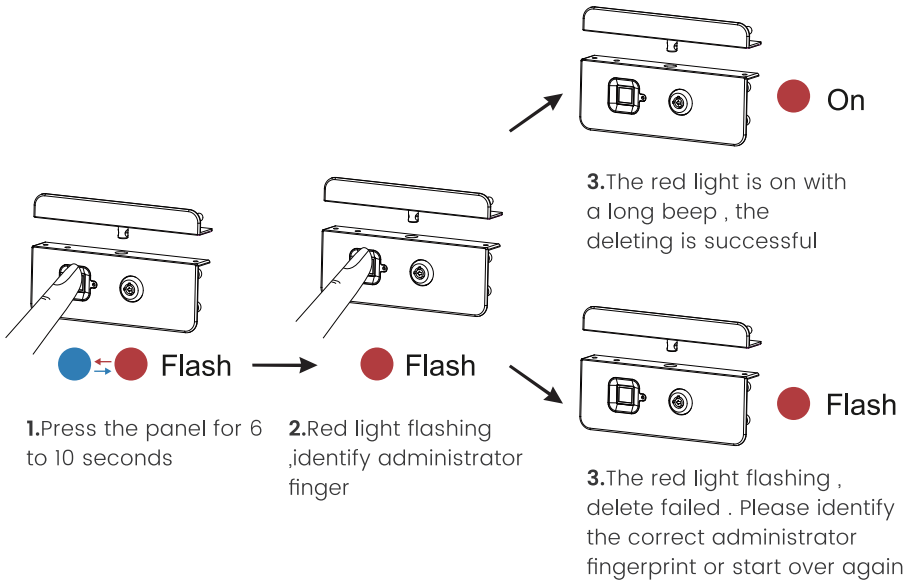
1) Administrator Account



2) The 2~10 Users Account



4.2.2 How to delete/reset fingerprint account



Note: If you can't manually clear your fingerprints, please contact us to provide a technical installation package for clearing your fingerprint users.

5. WINDING PROGRAMS

The module YLK winder provides 5 TPD settings and 3 directional modes, giving 15 possible rotation programs. (clockwise/counter clockwise/-clockwise+counter clockwise)

There are 5 distinct rotation programs with respect to the TPD settings and their parameters are listed in the following table. The actual number of rotations will be double that of the TPD value when the rotator is in bi-directional mode.

YLK Series

TPD	No.of Cycle	Turns per Cycle	Cycle Period (second)
650	10	65	665
750	10	75	756
850	10	85	508
1000	10	100	432
1950	10	195	222

Note:

There is no magic number of rotations that will wind your watch. Things such as how active you are, how many complications your watch has, how frequently you use the chronograph function, how frequently you wear your watch, the watch make, how long it has been since it was last serviced and a host of other variables will impact what your watch requires to stay wound. And a watch winder won't wind a watch that is fully stopped. So, you need to manually wind the timepiece to get it running first. You will have to make this determination by trying the various settings.

5.1 Winder Cycle Chart

650TPD	10 turns every 665 seconds, rotate for 12 hours and rest for 12 hours then repeat.
750TPD	10 turns every 576 seconds, rotate for 12 hours and rest for 12 hours then repeat.
850TPD	10 turns every 508 seconds, rotate for 12 hours and rest for 12 hours then repeat.
1000TPD	10 turns every 432 seconds, rotate for 12 hours and rest for 12 hours then repeat.
1950TPD	10 turns every 222 seconds, rotate for 12 hours and rest for 12 hours then repeat.
TPD: Turns per day	

Note:

The default setting is "1000TPD" and "clockwise then counter-clockwise" mode, this mode will fit 95% of the watch. If your watch manufacturers can not give you advice for the TPD setting, just use the default setting.

6. Contact

If we don't answer your question here, then email us at below:

For our website: support@dukwinwatchwinders.com

After-sales for other selling platform : dukwinwatchwinder@gmail.com

Whatsapp: +1 6315455745

