



MAXVAC

**INDUSTRIAL
VACUUM
SV1 875 MBS**



**INSTRUCTION
MANUAL**



INSTRUCTION MANUAL

INTRODUCTION	3
TECHNICAL SPECIFICATIONS	4
INFORMATION	5
SAFETY	9
INSTALLATION	15
OPERATION	18
MAINTENANCE	25
TROUBLESHOOTING	33
EU DECLARATION OF CONFORMITY	34



INTRODUCTION

This manual provides all the information needed to use and service your vacuum cleaner. Good operation and durability depend on proper maintenance and careful use.

Before leaving the factory, this particular model has undergone stringent tests to ensure utmost reliability. Always check however to make sure the vacuum cleaner has not been damaged during transport in such a way as to affect operation and safety.

The vacuum cleaner is equipped with the following filters:

M-Filter / Washable Nylon Filter

This manual should be considered an integral part of the vacuum cleaner and must be kept together with the unit until this is scrapped. In case of loss of or damage to the manual, ask MAXVAC for a new copy.

The technical details contained in this manual are the property of MAXVAC and should be deemed of a confidential nature.

Even partial reproduction of the graphic project, the text and the illustrations is legally forbidden.

Some details shown in the illustrations in this manual may be different from those of your vacuum cleaner. Some component parts may have been removed for greater clarity.

For easier reference, this manual is split into sections, identifiable by specific graphic symbols.

The subjects dealt with in this manual are those expressly required by "Machine Directive 2006/42/CE" and the technical details shown are those provided by the manufacturer at the time of compilation.

This manual must be kept in a place accessible to all the personnel charged with operating and servicing the vacuum cleaner.



In case of any doubts, always immediately phone the After-Sales Service.

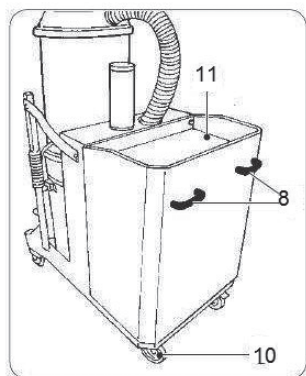
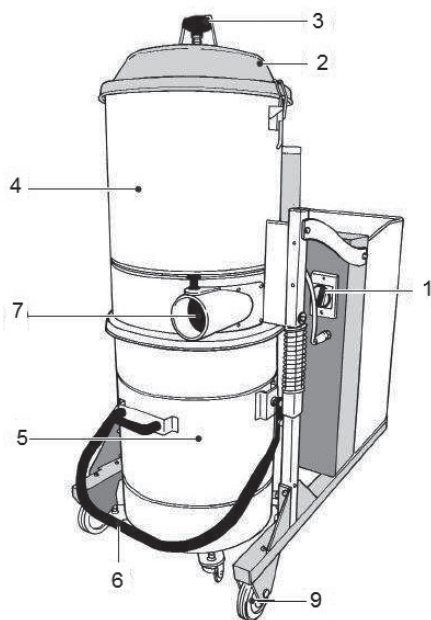
The competent Law Court for all disputes is that of Switzerland.

The manual must be kept with the vacuum cleaner in case of resale!

TECHNICAL SPECIFICATIONS

1.1 Identification of main parts

- 1) On/off control
- 2) Cover
- 3) Filter shaker knob
- 4) Filter chamber
- 5) Extracted refuse container
- 6) Refuse container locking/release lever
- 7) Suction hose inlet
- 8) Carry handles
- 9) Fixed casters
- 10) Swivel casters with brake
- 11) Accessory container



A wide range of optional accessories are available from MAXVAC depending on the intended use of the vacuum.



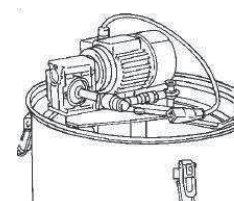
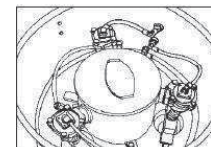
INFORMATION

1.2 Options

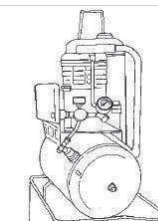
MAXVAC provides a wide range of optional accessories, according to the application of the vacuum.



Automatic air filter cleaning system (CCA)



Automatic rotational filter cleaning system



CCA system with compressor

1.3 Marking plate

In compliance with the Machine Directive 2006/42/CE on vacuum cleaners, the machine is fitted with CE plates.

When contacting the manufacturer or dealer, always quote the details shown on the vacuum cleaner plate.

MOD.	<input type="text"/>	S/N	<input type="text"/>
DESC.	<input type="text"/>	YEAR	<input type="text"/>
50 Hz	<input type="text"/>		
60 Hz	<input type="text"/>	FILTER	<input type="text"/>
www.max-vac.com		Made in Swiss.	



1.4 Intended uses

This model has been designed, manufactured and protected solely for professional industrial extraction of non-flammable and non-toxic dry dust.

For hazardous Zone 22 dusts, request the B1 version from MAXVAC.

If equipped with a special filter and float, the vacuum can also be used to extract non-flammable and noncorrosive liquids.

Any other use is considered IMPROPER.

1.5 Allowed environmental conditions

To ensure the correct operation of the vacuum cleaner, this must be positioned protected against atmospheric agents (rain, hail, snow, fog, dusts in suspension, etc.) with an environmental running temperature between 5°C and 45°C and relative humidity not above 70%.

The work environment must be clean, well-enough lit and devoid of explosive atmosphere.

1.6 Noise level

Noise level readings were taken in accordance with the provisions of Machine Directive 2006/42/CE standards.

Sound tests performed on this specific vacuum cleaner model have been taken from a distance of 1 meter and from a height of 1,60 meters, showing an acoustic pressure no higher than: 76 dB (A)

Attention!

Pursuant to articles L.D. 81/08, workers exposed to sound pressure levels above 85 dB (A) must be protected by special individual protection devices.

It is therefore necessary, if such working conditions exist, to provide workers with such approved individual protection devices and to inform them of the risks relating to noise exposure.



1.7 Storage

Remove the filter and clean it, empty the debris collecting container or remove the bag part with the debris and store the vacuum cleaner in a place protected from atmospheric agents with temperatures between 0° and 40°C, covering it with a nylon sheet so as to avoid dust build up.

TECHNICAL INFORMATION

SV1 875 MBS	
Power	5.5 kW
Max Depression	510 mBar
Voltage	400V-50/60Hz
Maximum airflow rate	320m ³ /h
Noise Level	76 dB(A)
Waste capacity	100 Litres
Weight*	175 Kg
Dimensions**	660 x 1200 x 1510

(*) weight without packaging

- packaging weight = 18 Kg

(**) machine dimensions

without packaging

1.10 Warranty

MAXVAC guarantees this vacuum cleaner model for a period of 12 months from the date of purchase indicated on the tax document at the time of delivery of the vacuum cleaner by the seller.

The warranty shall be invalidated in the event of the vacuum cleaner having been repaired by unauthorised third parties or of equipment or accessories being used that have not been supplied by MAXVAC or which have not been recommended or approved by MAXVAC or whose serial number has been removed or altered during the warranty period.



INFORMATION

MAXVAC undertakes to repair or replace, free of charge, those parts which, during the warranty period show manufacturing faults. Repairs shall be made in the MAXVAC facilities only or in a Technical Assistance Centre indicated by us and machines shall be sent to us carriage free (transport costs to be paid by the user, unless otherwise agreed).

The warranty does not cover any cleaning of working parts.

Faults not directly attributable to materials or manufacture shall be examined only in our facility or in a Technical Assistance Centre indicated by us. If claims appear unjustified, all the costs relating to repair and/or replacement of parts shall be charged to the buyer.

The purchase tax document shall be shown to the technical personnel making the repairs and must accompany the vacuum cleaner dispatched for repair.

The warranty does not cover: accidental damage, caused by transport or carelessness or inadequate treatment, or improper use not in compliance with the instructions in the instruction manual, or in any case by occurrences not dependent on normal operation or use of the vacuum cleaner. MAXVAC declines all responsibility for any damage to persons or things caused by bad or improper use of the vacuum cleaner.

All disputes shall be referred to the Law Court of Switzerland.

The manufacturer declines all liability in the following cases:

- Failure to send the warranty Certificate
- Failure to follow the instructions
- Use of non-original spare parts
- Failure to service the machine properly



ATTENTION!

In the event of doubts, avoid interpreting the information!
Call MAXVAC immediately!



SAFETY

2.1 Safety details

The person in charge of safety shall be responsible for informing workers about the risks associated with vacuum cleaner operation.

The obligation also exists of training workers so they are able to protect themselves and others.

Failure to observe basic safety regulations and Warnings could cause accidents during vacuum cleaner operation, maintenance and repair. Accidents can often be avoided by recognising potentially dangerous situations before these occur.

Operators should be aware of potential hazards and be trained and skilled enough. They should also have the tools necessary to perform these duties properly.

MAXVAC shall under no circumstances be deemed liable for accidents or damage caused by use of the vacuum cleaner by personnel not properly trained or who use it in an improper manner, as well as by even partial failure to comply with the safety regulations and intervention procedures indicated in this manual.

The safety WARNINGS and warning notices are indicated in this manual and on the product.

Unless these hazard messages are heeded, the operator could become involved in accidents with serious consequences for him/herself and for other people.

The safety messages are highlighted by the following symbols:



ATTENTION!

Unless these messages are heeded, operator injuries could occur.



WARNING!

Unless these messages are heeded, vacuum cleaner damage could occur.

MAXVAC cannot foresee all possible circumstances capable of representing a potential hazard.



SAFETY

The warnings in this manual and on the products should not therefore be deemed exhaustive. In the event of tools, procedures, work or machining methods being used that are not explicitly recommended by MAXVAC, make sure no hazards exist for operators and others.

IMPORTANT!

Only ever use original MAXVAC spare parts. MAXVAC declines all liability in the event of non-original spare parts being used.

2.2 Safety warnings



ATTENTION!

The following indications are, by themselves, not enough to fully protect against all the hazards that could arise during vacuum cleaner operation. These will have to be integrated with common sense and the experience of the operator, both of which are crucial factors for preventing accidents. Each section of this manual lists further specific safety warnings for the various operations.

- Maintenance jobs must always be performed with the power plug detached from the power point.
- The employer must inform and train the user according to the provisions of applicable laws.
- Before using the machine, prepare and train yourself by reading this manual carefully. Use of the machine by untrained and unauthorised persons is forbidden.
- Using the machine to vacuum toxic substances is forbidden unless this has been equipped with special filters required for the specific type of dusts. Such filters must be explicitly requested by you.
- If the machine is used to vacuum toxic-harmful substances, the Longopac® container must be emptied and the filters cleaned using adequate individual protection devices, selected according to the type of substances to be vacuumed.
- Do not vacuum flammable materials or substances which could cause explosions (fuels, solvents, etc.). To vacuum such materials, the machine must be built with Anti-explosion Motor and Electric System and this must be requested by you explicitly.



- Do not vacuum corrosive substances unless the machine is equipped with containers suitable for this purpose (Stainless-steel AISI 304).
- Use of the machine without the supplied filters is not recommended.
- If the filters are correctly fitted, the machine will not eject any objects.
- Never rest miscellaneous materials on the horizontal protection guard.
- The machine casing containing moving parts must not be removed by the user.
- When using the machine, mind other people, especially children.
- Use the machine cautiously on slopes and ramps.
- Do not change direction on gradients.
- Make sure the parked machine remains stable by operating the braked wheel.
- Only skilled persons should carry out repairs.
- During cleaning operations, maintenance jobs or when changing parts, the starter switch must be off and the machine must be disconnected from the power mains by removing the cable from the socket.
- During use, mind the power supply cables and avoid crushing or pulling these.
- Periodically check the mains power cable to ensure this is not damaged.
- In the event of the cable being damaged, the machine must not be used.
- In the event of the cable, plugs or couplings being replaced, make sure these are protected against water spray and check mechanical strength.
- Never pull the machine by means of the power cable and the vacuum pipe.
- Motor brushes and burnt-out fuses must be replaced by MAXVAC or authorised dealers. Always use original spare parts.
- The user is responsible for disposing of vacuumed substances in accordance with applicable laws.
- After 10 years of use, we recommend sending the machine for a complete overhaul to MAXVAC.
- The machine is supplied with: instruction manual, Exploded Spare Parts drawing, Test Sheet, Warranty Slip, Approval Certificate.
- In the event of Customers fitting a tool to the machine not supplied by MAXVAC, make sure the safety conditions required by Machine Directive 2006/42/CE are complied with and in any event, MAXVAC is unable to accept liability for any problems arising from use of such tool.
- The vacuum cleaner must not be operated in a corrosive or explosive environment.



SAFETY

- Always make sure the vacuum cleaner is free of all foreign materials such as debris, oil, equipment and other objects that could affect operation and cause injury to persons.
- Avoid using flammable or toxic solvents such as petrol, benzene, ether and alcohol for cleaning.
- Avoid prolonged contact with solvents and inhaling their vapours. Avoid use close to open flames or sources of heat.
- Never use the vacuum cleaner without the filter.
- Do not vacuum lit cigarette ends. The filter could be damaged.
- Do not vacuum petrol or flammable liquids in general.
- Make sure all the guards and protection devices are in place and that all the safety devices are in place and working properly.
- Do not wear loose or hanging clothing such as ties, scarves or torn garments that could become trapped and be sucked up by the cleaner.
- Do not open the vacuum Longopac® container (if applicable) with the machine running.
- The manual should always be kept handy for reference so the operating cycle can be checked every time there are doubts.
- In the event of this manual being lost or damaged, ask MAXVAC for a new copy.
- Structural damage and improper alterations or repairs could change the protection capacity of the vacuum cleaner and therefore cancel this certification.
- Any alterations to the appliance must only be made by MAXVAC engineers.
- During maintenance jobs, affix a notice to the appliance indicating "MACHINE BEING SERVICED, DO NOT START".
- Climbing on the cleaner is forbidden.
- Never touch electric wires, switches, buttons, etc. with wet hands.
- Before connecting to the power mains, make sure the power voltage and frequency are those shown on the machine plate.
- Make power connections to a mains supply with efficient earth system.
- In the event of an extension being used, make sure this is in perfect condition, marked CE and that the cross section of the cable is suitable for the vacuum cleaner power input.



- When restoring original working conditions, the appointed personnel should make sure that at the end of the operating procedure, proper vacuum cleaner operation safety conditions are restored, especially the safety devices and the protective guards.
- Only adult persons should use the vacuum cleaner.
- During vacuuming operations, always brake the vacuum cleaner using the special revolving wheel lock.

2.3 Safety plates and symbols

Plates are affixed to the vacuum cleaner showing safety symbols and/or messages.



ATTENTION!

Make sure all the safety messages are legible. Clean these with a cloth, soap and water. Do not use solvents, diesel fuel or petrol. Replace the damaged plates with new ones supplied by MAXVAC. If a plate is affixed to a replaced part, make sure a new plate is affixed to the new part.

ATTENTION!

Read the operator's and maintenance manual carefully before using the cleaner or doing any maintenance jobs.

IMPORTANT

Do not breathe in inflammable and/or explosive liquids or powders

WARNING!

Risk of crushing upper limbs while fitting and locking the material Longopac® container on the vacuum cleaner. Never place hands between the material Longopac® container and vacuum cleaner while locking. Do not place hands on sides of Longopac® container near the guide pins while locking. Perform the Longopac® container locking operation by means of the lever, USING BOTH HANDS!



SAFETY

2.4 Outstanding risks

Careful analysis of risks performed by the manufacturer and stored in the technical file has made it possible to eliminate most of the risks associated with vacuum cleaner operation.

The manufacturer advises carefully following the instructions, procedures and advice contained in this manual as well as applicable safety regulations, including the use of the envisaged protection devices, both those integrated in the cleaner and individual.

Outstanding risks associated with the vacuum cleaner could be:

Electrical maintenance risks caused by the need to work under power. Pursuant to Presidential Decree 81/08, only trained personnel should work on the machine with the power supply connected and this must have double earth insulation.

Risk of improper use in the presence of explosive and flammable substances. The vacuum cleaner must not be used in environments containing substances in the form of liquids that could vaporize at room temperature and flammable dusts and gas.

Risks of operation in humid environments. Keep to the limits shown in this manual in section 1.5 - Allowed environmental conditions.

Risk of erroneous interpretation of the safety pictograms. Having identified the various outstanding risks, the manufacturer has affixed to the cleaner a number of hazard labels in compliance with regulations relating to the graphic symbols to be used.

The user must immediately replace any safety plates that become illegible due to wear or damage.



ATTENTION!

Removing the safety plates on the vacuum cleaner is strictly forbidden. The manufacturer declines all liability in relation to vacuum cleaner safety in the event of failure to comply with the above indications.



2.5 Applied directives

The following directives apply to the vacuum cleaner described in this manual:

- 2006/42/CE Machine Directive
- 2014/30/EU Electromagnetic Compatibility Directive

INSTALLATION

3.1 Handling

The instructions below also include the operations to be carried out in the event that the vacuum must be packed or unpacked again for subsequent transport.

The vacuum must be lifted and handled only using a forklift whose load bearing capacity is suited to the weight.

When using a forklift, lift the load 200mm off the ground and swing backwards. Always keep the height of the working environment in mind when lifting loads.

Before starting any movement, ensure that the area is cleared and that there are no moving objects on the packaging. For lifting and handling operations, comply with the occupational safety standards in force and with the normal forklift driving instructions.



Depth: 750mm

Width: 1300mm

Height: 1900mm

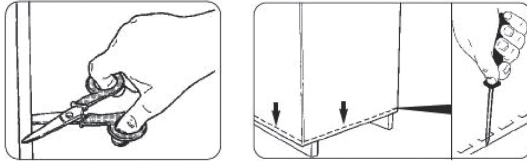
Weight: 38Kg



INSTALLATION

3.2 Unpacking

Cut and remove the two packaging fasteners with a screwdriver remove the staples that secure the carton to the pallet

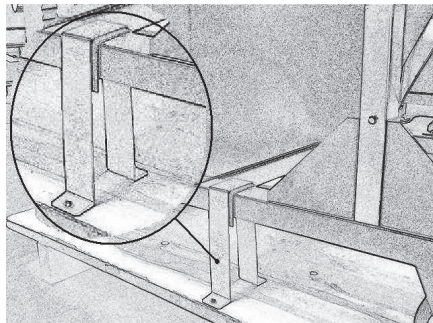


Remove the carton, loosen and remove the fastening screws and brackets from both sides



The cardboard packaging is recyclable and should be collected separately to prevent environmental impact.

Loosen and remove off both sides the fastening screws and brackets



ATTENTION!

Keep the pallet and the fastening brackets. In the event of subsequent transport, the vacuum must be secured to the pallet using the same fastening system.



3.3 Installation



WARNING!

Before installing the vacuum, it is important to carry out a thorough preventive visual inspection to identify any damage occurred during transport.

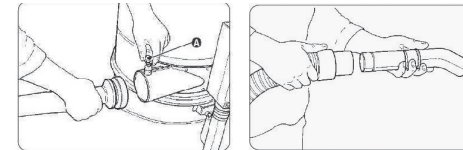
In the event that one or more components are damaged, do not continue with installation and inform MAXVAC about the anomaly and agree upon the actions to be taken.

The vacuum is already equipped with a suction filter, which allows extracting only dry dust or debris.

Lift the knob (A) and insert the hose equipped with end fitting in the suction inlet, releasing the knob.

Insert the accessory according to the type of extraction on the opposite side of the hose.

Note: The hose and its fittings and accessories are not included in the standard supply.



Contact MAXVAC for information regarding the various types of OPTIONS that can be used on this specific model.

The following operation must be carried out by a qualified electrician. Ensure that the power supply line corresponds to the voltage and frequency indicated on the identification plate and that it is efficiently earthed.



ATTENTION!

Do not insert the plug into the socket with wet hands. The use of extensions is not allowed.



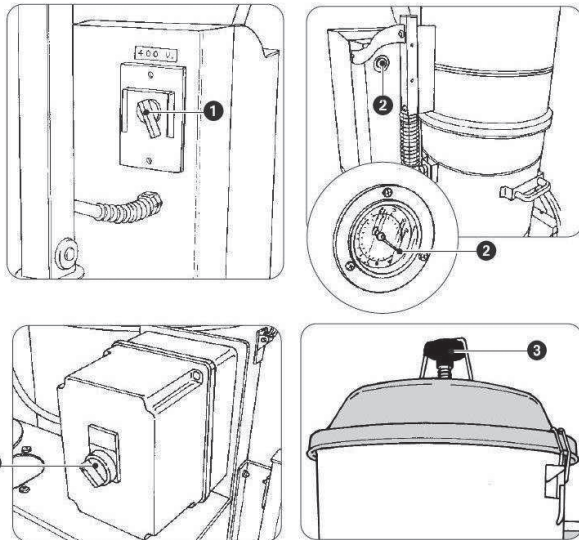
OPERATION

4.1 Description of controls



ATTENTION!

The vacuum can be used solely by authorised personnel after having read these use and maintenance instructions. The user of the equipment and the maintenance technician, who carry out interventions on the vacuum, must be adequately educated, informed and trained, in compliance with the occupational safety standards in force and, during the various operations, must wear personal protective equipment (PPE), such as safety footwear, gloves, protective goggles, mask, etc. The user must comply with the provisions in force concerning extracted materials and their disposal.



1 = ON-OFF switch **2 = Vacuum meter:** indicates suction filter clogging
3 = Manual knob (filter shaker) **4 = manual/automatic Compressed Air Filter Cleaning selector**



4.2 Operating cycle

Ensure that the power cord is intact and in perfect state.



ATTENTION!

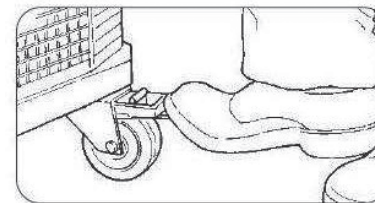
Before inserting the plug, ensure that the voltage of the power supply line corresponds to that indicated on the vacuum's identification plate. Ensure that the power plug is inserted into the socket correctly.

Ensure that the power plug is inserted correctly into the socket.

Ensure that the hose is inserted properly and locked into the suction inlet.

Ensure that the refuse collection container is properly locked to the vacuum.

Block the vacuum using the brake on the swivel caster, as shown in the figure.



ATTENTION!

Do not shift the vacuum while it is operating.

Hold the end of the hose with the chosen accessory.

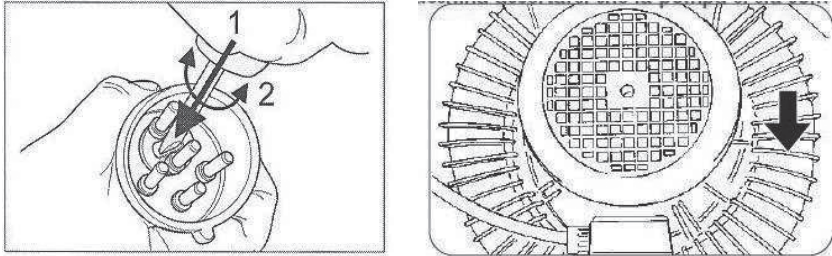
Turn the main switch (1) to "I" and start vacuuming.

If, upon switching the machine on, the hose blows instead of vacuuming, switch the machine off by turning the main switch to "0", unplug it and reverse the pins on the plug using the dedicated inverter.



OPERATION

The rotation direction must be that indicated by the arrow in the figure.



WARNING!

Before turning the vacuum on again, ensure that the pump has fully stopped.

Upon completing this operation, turn the main switch (1) to "0"

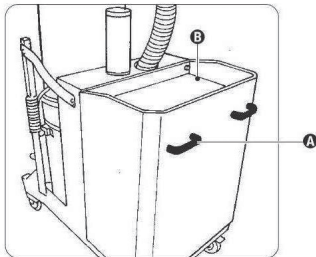


ATTENTION! Dust coming out from the vacuum can indicate a broken filter. In this case, stop the vacuum immediately and verify the cause.

For any emergency, turn the main switch (1) to "0"

Use the handles (A) to move the vacuum – see figure

For greater practicality, the accessories used more frequently can be located in the dedicated accessory compartment (B).



Warning!

During operation, prevent the hose from rolling up or bending

A vacuum meter is installed on the side of the vacuum to indicate the level of negative pressure inside the vacuum. The vacuum meter indicates the condition of the filter: an increase in negative pressure indicates increased filter clogging, with a reduction of the suction power as a result.

When the filter is clogged, the vacuum meter indicates the value shown in the table below. In this case, stop the machine and shake the filter.

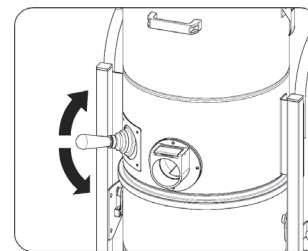
Clogged filter value -0.20 bar/-20 kPa



Warning!

Do not, under any circumstance, use the machine with a clogged filter.

This model features a vacuum gauge indicating the level of negative pressure inside the vacuum. The vacuum gauge indicates the condition of the filter: negative pressure increases indicate filter clogging, with consequent reduction of the suction power. When the filter is clogged, the vacuum meter indicates the value of 0.22 bar.



In the event that the red indicator light turns on or the negative pressure is higher than that reported in the table, check firstly that the hose and/or the suction accessory is not clogged. In this case, remove the cause of the clog. Otherwise it will be necessary to clean the filter as described below: turn off the machine wait for the rotating motors to come to a complete stop lift and then lower the lever energetically to shake the internal filter.

OPERATION



Attention!

If the vacuum is not working properly after having cleaned the filter, it can mean that the filter is clogged and needs to be replaced.

Warning!

In the event that the vacuum still indicates an irregular negative pressure, it can mean that the hose or the suction accessory are clogged. In this case, clean it, removing the cause of the clog.

Vacuum with rotational filter shaker

In the event that the vacuum is equipped with rotational filter shaker, the filter is automatically cleaned upon switching the vacuum on and off.

Vacuum with compressed air filter cleaning system (CCA)

The vacuum must be connected to a compressed air supply with a maximum 5 bar pressure, through the dedicated regulator filter (see 3.3 of this manual).

The filtering cartridges are automatically cleaned while vacuuming. We recommend manually activating the ACC system every 40 hours for further cleaning of the filtering cartridges. In this case:

- 1) Turn the vacuum off
- 2) turn the CCA selector (4) to manual (see 4.1 of this manual)
- 3) Wait for 5 minutes and then bring the CCA selector (4) back to automatic
- 4) Restart the vacuum.

4.3 Emptying the refuse container



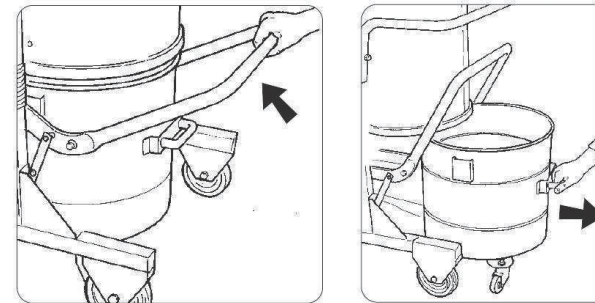
Attention!

Wear PPE (gloves, dust mask, goggles, etc.) during this operation

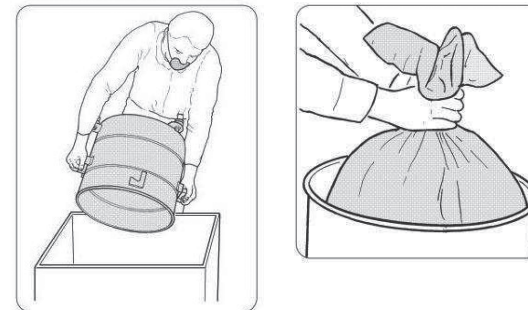
According to the amount and type of extracted material, it is important to periodically verify the refuse container, preventing it from filling up excessively.

To empty the container, proceed as follows:

- Switch the machine off by turning the main switch (1) to "0"
- As previously mentioned, the vacuum is locked by the lever located on the swivel caster
- Unlock the container by lifting the lever



- Remove the container from the vacuum, using the handle
- Empty the debris in the dedicated container and dispose of it in compliance with the standards in force in the country of use



- In the event a plastic bag is used to collect the refuse:
 - Upon removing the container
 - Tie the bag
 - Remove the bag
 - Insert a new bag.



OPERATION



Attention!

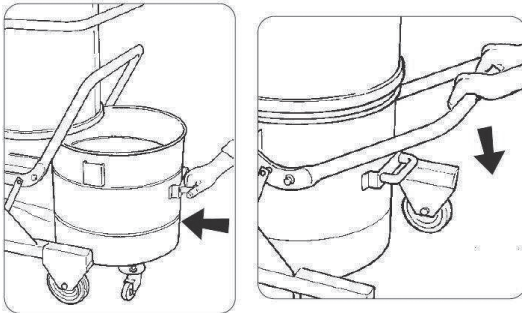
In the event that the container (or the bag) weighs over 15 Kg, have somebody help you. A special drum lifting kit is available for significant loads: you can request it from MAXVAC.

Waste must be disposed of in compliance with the standards in force in the country of use – for Italy with Legislative Decree 152/2006 and subsequent amendments and additions.

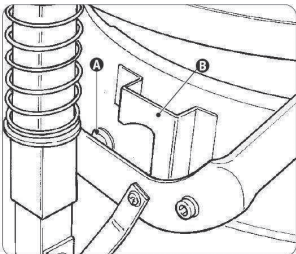
In the event of use with class M and H dusts, these must be conveyed to a special plastic bag.

4.4 Inserting and locking the refuse container

- Insert the container under the vacuum
- Fully lower the lever that locks the container using both hands.



- The pins (A) on both sides must be aligned to the eyelets (B).



Attention!

Upper limb crushing hazard!

Do not, under any circumstance, place your hands between the container and the vacuum while locking it.

4.5 Storage - decommissioning

Remove the filter and clean it; empty the refuse collection container and store the vacuum in a place protected against weather agents with the temperature ranging between 5 and 45 °C and cover it with a nylon tarp to protect it against dust.

MAINTENANCE



Attention!

Special vacuum maintenance must be carried out solely by specialised technicians authorised by the MAXVAC dealer.

5.1 Information notes

This section describes the verifications and routine maintenance operations required to ensure proper vacuum operation.

Maximum reliability and minimum maintenance costs are the result of a planned maintenance and inspection schedule carefully followed throughout the entire lifespan of the vacuum.

Observe the set maintenance intervals and schedule the interventions according to specific requirements in relation with the vacuum production cycle.

Always use tools that are in perfect state and that are specifically intended for the operation to be carried out; the use of inadequate or inefficient tools can cause serious damage.

Any other intervention required to eliminate faults or malfunctions must be expressly authorised by the manufacturer.



MAINTENANCE

In these cases, always communicate the vacuum identification data - see para 1.4 of this manual.

For important repairs, refer to the authorised dealer, whose specialised personnel has the technological expertise and is always available for prompt interventions.

As for interventions carried out by the user, the vacuum must be disassembled, cleaned and maintained, where possible, in such a way as to prevent hazards to the maintenance personnel and to third parties.

Suitable precautions include decontamination prior to disassembly, forced filtered ventilation of the room where the equipment is disassembled, cleaning the maintenance area and wearing suitable personal protective equipment.

In order to prevent dust dispersion, before taking a class M vacuum out of a hazardous zone, its external parts must be:

- Decontaminated by vacuuming methods - using a vacuum of the same or higher class
- Washed, passing a damp cloth over its surface, and
- Treated with sealing means.

Once every three months (or more frequently, according to the operating cycle and the conditions of use), the manufacturer or a qualified technician must verify the filters, ensuring that they are not damaged, the tightness of the air system and proper operation of the control devices.

Should maintenance operations or repairs be carried out, all contaminated objects must be adequately cleaned, placed in waterproof bags and disposed of in compliance with the standards in force.



Attention!

All the operations described above must be carried out with the plug disconnected from the socket (and the air disconnected from the CCA system). Before starting any maintenance or cleaning operation, wear suitable PPE (protective clothing, goggles and/or gloves, etc.) according to the work to be done.



Place a sign on the vacuum with the message:
“**MACHINE UNDER MAINTENANCE DO NOT START**”

Before resuming operation, verify the entire system according to start-up procedures. Run a few trial operating cycles after every maintenance operation to ensure proper machine operation.

Failure to comply with these precautions can cause serious injuries to the personnel.

Maintenance operations must be carried out by trained technicians specialised in the following sectors:

- Mechanical maintenance
- Electrical maintenance

It is the Safety Manager's duty to ensure the professionalism and skills of these technicians.

Before starting any maintenance operation, the Safety Manager must:

- Keep unauthorised personnel out of the work area.
- Ensure that the necessary tools are in good conditions and readily available to the maintenance technician.
- Ensure that the maintenance technician is equipped with the personal protective equipment required for the specific operation (gloves, goggles, shoes, mask, etc.).
- Ensure that the maintenance technician has carefully read the instructions contained in this manual and knows the operation of the vacuum and its components perfectly well.
- Ensure that there is enough light and, if necessary, provide 24 Volt torches.

Before starting any maintenance operation, the Maintenance technician must:

- Disconnect all power supplies and safely lock the vacuum and
- Disconnect the compressed air supply (where available).



Attention!

Should it be absolutely necessary to operate with the power supply on, where provided by Italian Legislative Decree 81/08, the maintenance technician must keep a safety distance, have the emergency stop buttons at hand and must never place his hands between the refuse container and the vacuum.



MAINTENANCE

Upon completing the intervention and before starting up again, the maintenance technician must verify the efficiency of the safety devices and the integrity of the protective guards.

Interventions on the motors or on other electrical components must only be carried out by the specially trained electrical maintenance technician authorised by the Safety Manager.



Attention!

After every maintenance operation, the Safety Manager is obliged to ensure the safety conditions of the vacuum and its protection devices.

Before every work shift

- Ensure that the power cord and plug are not damaged: replace the power cord immediately at the slightest
- Sign of wear with one of the same type (refer to MAXVAC for information). This operation must be carried out only by a qualified electrician.
- Ensure the integrity of the safety symbols (pictograms) applied to the vacuum.
- Ensure that the refuse collection container is empty and properly locked under the vacuum.
- Ensure the efficiency of the filter by means of the vacuum meter.
- Ensure the integrity of the suction hose and of the accessories to be used.



Attention!

A perforated hose reduces suction power and disperses dust in the air.

5.3 Replacing the filter

To replace the filter, proceed as follows:

1. switch the machine off by turning the master switch (1) to "O"
2. disconnect the vacuum plug from the socket (and the air for the CCA system)

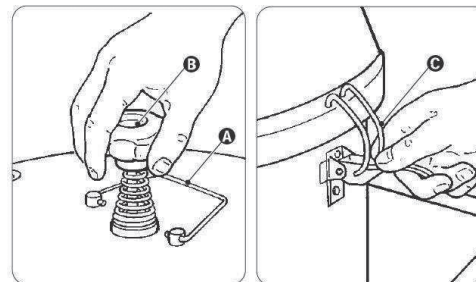


Attention!

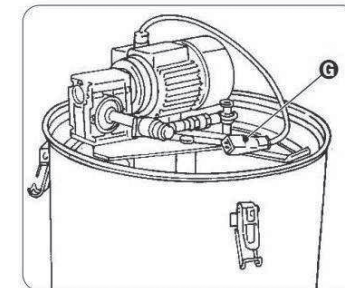
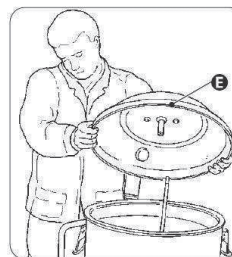
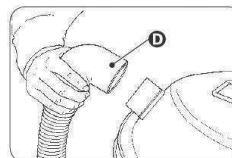
Wear appropriate PPE (dust mask, latex gloves, goggles, etc.).



3. lower the lever (A), loosen and remove the knob (B)
4. release the two latches (C) of the cover from both sides



5. detach the suction hose (D), using a hex key to unscrew the clamp
6. remove the cover (E)



7. remove the filter (F) and place everything on a worktop
8. if the vacuum is equipped with a rotational filter shaker, the plug (G) must be disconnected after removing the cover (E)
9. remove the fastening clamp (H); detach the filter from its support and use a pair of scissors to cut the inner wires that lock it.



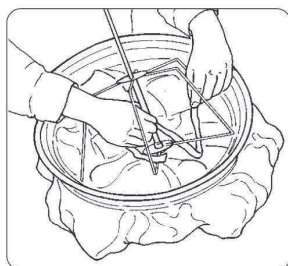
MAINTENANCE

10. remove the filter, place it inside a plastic bag, close it and dispose of it in compliance with the laws in force, according to the extracted material.



To assemble the new filter, proceed as follows:

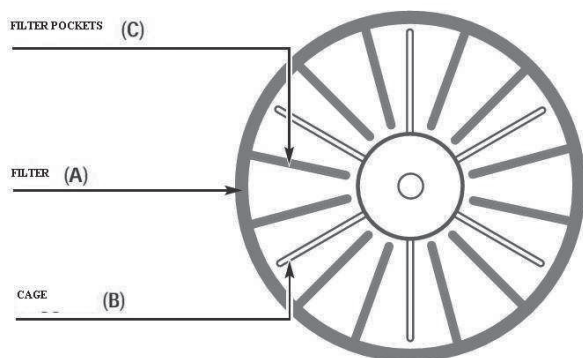
1. Insert the filter into its support ring, locking it by means of the fastening clamp (H)



2. Secure the filter to its support cage by means of the wires

3. For the automatic rotational shaker, the filter (A) must be installed by inserting 2 pockets (C) in every single space in the filter support cage (B)

Note: the spaces in the filter support are 6 and the filter pockets are 12.



4. Insert the filter and its support (F) into the vacuum.



5. Insert the upper cover (E) on the vacuum
6. Insert the upper cover, paying attention to the position of the suction inlet, which must be in direction of the hose (D)
7. Lock the two fastening latches (C)
8. Connect the hose (D)
9. Connect the compressed air to the valve fitting (A) – see paragraph 3.3
10. Connect the power supply
11. Turn the vacuum on, verifying its operation.

5.4 Replacing the filter cartridge (optional CCA)

(Every 500 hours of vacuuming)

To replace the filtering cartridges, proceed as follows:

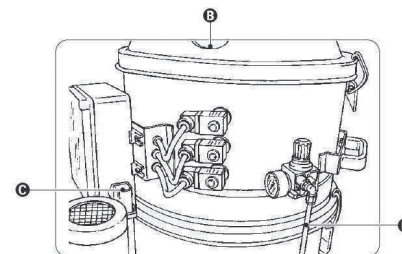
1. Switch the machine off by turning the main switch to “0”
2. Unplug the vacuum
3. Disconnect the compressed air from the valve.



Attention!

Wear appropriate PPE (dust mask, latex gloves, goggles, etc.).

4. Unlock the two latches (A) on both sides
5. Disconnect the suction fitting (B)
6. Disconnect the plug (C)
7. Connect the pneumatic supply pipe (D)



8. Remove the upper cover (E) equipped with filtering cartridges.



Attention!

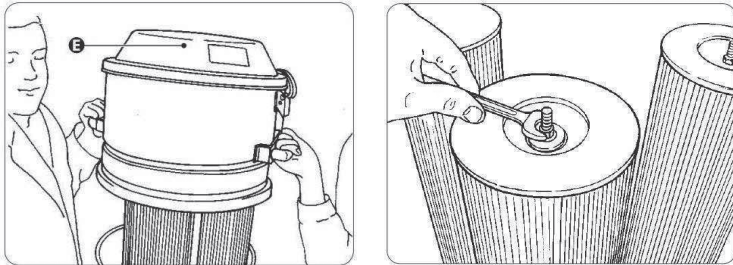
This operation must be carried out by two persons.



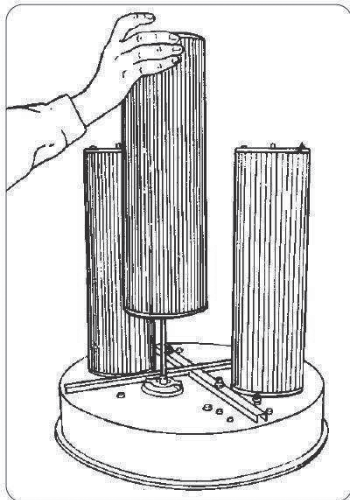
MAINTENANCE

9. Place the cover upside-down on a worktop

10. Unscrew and remove the nuts to release the single cartridges



11. Remove and replace the filtering cartridges with others having the same characteristics



12. Place the old filtering cartridges inside a plastic bag, close it and dispose of it in compliance with the laws in force, according to the extracted material.

Reassemble everything following the previous instructions.



TROUBLESHOOTING

Problems	Causes	Solutions
The appliance will not start	No power	<p>Ensure the presence of voltage in the socket</p> <p>Ensure the integrity of the plug and of the power cord</p> <p>Contact the MAXVAC technical assistance service</p>
The vacuum meter indicates an irregular negative pressure	<p>Clogged filter</p> <p>Clogged suction pipe</p>	<p>Shake the filter. Should this not be enough, replace it.</p> <p>Check the suction pipe and clean it.</p>
Dust comes out from the vacuum	<p>Perforated filter</p> <p>Filter not suitable for the type of material to be vacuumed</p>	<p>Replace the filter</p> <p>Install a filter suitable for the type of material to be vacuumed</p>
Motor too noisy	Faulty pump	Contact the MAXVAC technical assistance service



Do not dispose of electrical appliances with household waste!

In compliance with European Directive 2002/96/EC on waste electrical and electronic equipment (WEEE) and its implementation in accordance with national law, electric tools that have reached the end of their lifecycle must be collected separately and returned to an environmentally compatible recycling facility.

"EC DECLARATION OF CONFORMITY"

The manufacturer declares that the products described in these instructions

SV1 875 MBS

Comply with the essential requisites of European Directives:

2006/42/CE

and is in accordance with standards

This declaration was drawn up in October 2016.

EN 60335-1: 2012 + A11: 2014

EN 60335-2-69:2012

EN 62233: 2008

EN 55014-1: 2006 + A1: 2009 + A2: 2011


EN 55014-2: 2015

EN 61000-3-2: 2014

EN 61000-3-3: 2014



MAXVAC

 Mülibodenstrasse 3
CH-8172 Niederglat
Zürich, Schweiz

 +41(0) 43 411 4195

 max-vac.com

Version 1.1