

## Product Datasheet

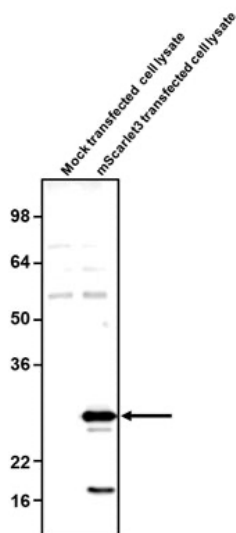
Chickens make *better* antibodies.

# Anti-mScarlet3 Antibody

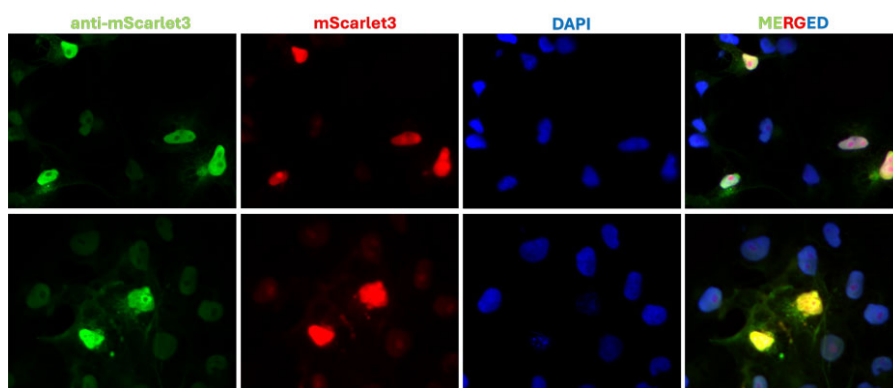
## Overview

<b>Catalog #</b>	mScarlet3-0100 (500 µL size) or mScarlet3-0020 (100 µL size)
<b>Concentration</b>	0.2 mg/mL
<b>Host Species</b>	Chicken Polyclonal
<b>Format</b>	Affinity-Purified IgY
<b>Buffer</b>	Phosphate-buffered (10 mM) isotonic (0.9%, w/v) saline ("PBS," pH 7.2) with sodium azide (0.02%, w/v) added as a preservative.
<b>Applications</b>	ICC 1:50-1:200, IHC, WB 1:500-1:1000
<b>Species Reactivity</b>	N/A
<b>Immunogen</b>	Purified recombinant mScarlet3 expressed in <i>E.Coli</i>
<b>Molecular Weight</b>	26 kDa
<b>Cite this Antibody</b>	Aves Labs Cat# mScarlet3-0100 or Aves Labs Cat# mScarlet3-0020; RRID: AB_3665368

## Images



Western blotting of mock or mScarlet3 transfected COS-7 cell lysates with chicken anti-mScarlet3 antibody (0.5 µg/ml) and detected with anti-chicken HRP. Chicken anti-mScarlet3 recognizes exogenous mScarlet3 in COS-7 cells.



Immunofluorescence of COS7 cells expressing mScarlet3 using chicken anti-mScarlet3 antibody (green) and showing mScarlet3 autofluorescence (red). The cells were mounted with ICT's Fluoroshield with DAPI mounting medium (Cat. AR-6501). The DAPI nuclear stain (blue) shows the nuclei of both transfected and untransfected cells. The staining revealed a complete overlap between the signal from chicken anti-mScarlet3 antibody and mScarlet3 autofluorescence in transfected cells.

## Details

---

<b>Target Description</b>	mScarlet3 is a next-generation red fluorescent protein (RFP) widely used in cellular and molecular biology for live-cell imaging. It is part of the mScarlet series, developed to improve brightness, photostability, tolerance to acidity, and maturation speed over previous RFPs (Bindels et al 2017). mScarlet3 introduces enhancements like better acid tolerance and increased brightness, enabling the capture of clearer, precise, long-term images of live cells. These improvements are especially valuable in studying dynamic cellular processes, such as protein expression and cell signaling where prolonged and high-resolution imaging is essential. mScarlet3 enables the tracking of protein expression, cell signaling, and subcellular dynamics with greater fidelity and less cellular stress.
<b>Purification Method</b>	Eggs from hens hyperimmunized with target were used to prepare an IgY fraction which was then subjected to antigen-specific affinity purification.
<b>Quality Control Tests</b>	Each new lot of this antibody is tested to confirm that it recognizes a single immunoreactive band of expected molecular weight when used in Western blot.
<b>Storage</b>	Store at 4°C in the dark. Under these conditions, the antibodies should have a shelf life of at least twelve months, provided they remain sterile. For longer term storage, aliquot and freeze to avoid freeze-thaw of the antibody.

## Our Guarantee

---

As an original manufacturer, we are dedicated to creating quality and reproducible antibodies that further your research. We provide personalized customer support from the scientists that made the antibody and offer a free replacement or 100% refund if we cannot resolve an issue. Order today and experience how chickens make better antibodies.

**Note:** For research use only. Not intended for therapeutic or diagnostic use. Use of all products is subject to our terms and conditions, viewable on our website.