

Product Datasheet

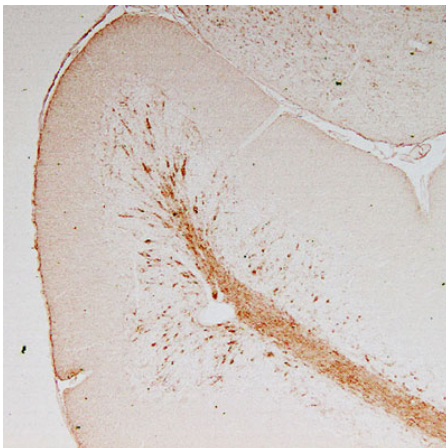
Chickens make *better* antibodies.

Anti-Vimentin

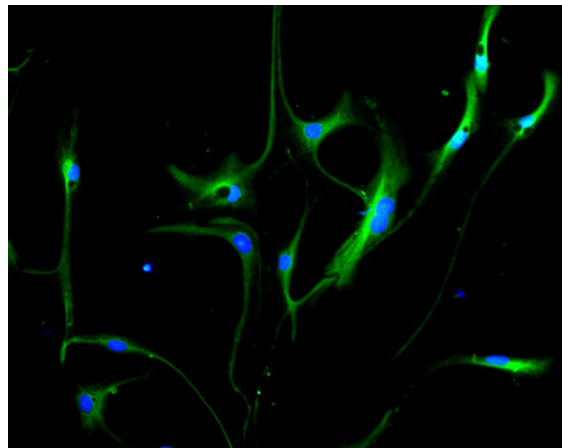
Overview

Catalog #	VIM
Concentration	300 µg/mL
Host Species	Chicken Polyclonal
Format	Affinity-Purified IgY
Buffer	Phosphate-buffered (10 mM) isotonic (0.9%, w/v) saline ("PBS," pH 7.2) with sodium azide (0.02%, w/v) added as a preservative.
Applications	IHC 1:1000-1:2000 ICC 1:1000-1:2000 WB 1:2000-1:5000
Species Reactivity	Human, Mouse, and Rat
Immunogen	Synthetic peptides
Molecular Weight	52 kDa
Cite this Antibody	Aves Labs Cat# VIM, RRID: AB_2313565

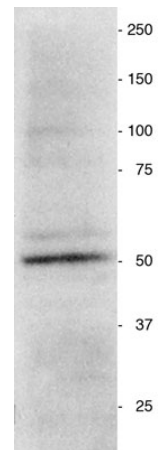
Images



Immunostaining of adult mouse cerebellum, showing staining in the granule cell layer and white matter tracts. Anti-vimentin antibody, 1:1000; HRP-labeled goat anti-chicken IgY, 1:500.



Culture of neurosphere cells from an e16 mouse brain immunostained for vimentin immunoreactivity. Vimentin antibody, 1:1000. Secondary, fluorescein-labeled goat anti-chicken antibody (Aves Labs, Cat.No. F-1005), 1:500. Hoda Ilias, Aves Labs.



Vimentin western blot of a homogenate prepared from a neurosphere culture. Vimentin antibody, 1:2000; Secondary, HRP-labeled goat anti-chicken antibody (Aves Labs, Cat.No. H-1004), 1:1000. Hoda Ilias, Aves Labs.

Details

Target Description	Human Vimentin is a 53,521 dalton protein (466 amino acids) expressed in many cell types of mesodermal origin and is one of the intermediate filament types that form the cytoskeleton. In the embryonic nervous system, however, Vimentin is expressed by migrating neural crest cells forming the PNS and by neural stem cells of the CNS. In some forms of glioblastoma, Vimentin is re-expressed by the tumor cells and serves as a general indicator of their undifferentiated state
Purification Method	Chickens were immunized with three synthetic peptide / keyhole limpet hemocyanin (KLH) conjugates. These synthetic peptides corresponded to different regions of the vimentin gene product, but are shared between the human (NP_003371, NCBI) and mouse (NP_035831, NCBI) protein sequences. After repeated injections, immune eggs were collected, and the IgY fractions were purified from the yolks. These IgY fractions were then affinity-purified using a peptide column, and the concentrations of the eluates adjusted to 300 µg/mL. Finally, equal volumes of each of the three affinity-purified anti-peptide antibodies were mixed, and the preparation was filtersterilized.
Quality Control Tests	Each of the three antibodies were analyzed by immunohistochemistry (at a dilution of 1:2000) using fluorescein-labeled goat anti-chicken IgY (1:500 dilution, Aves Labs Cat.# F-1005) as the secondary reagent.
Storage	Store at 4°C in the dark. Under these conditions, the antibodies should have a shelf life of at least twelve months, provided they remain sterile. For longer term storage, aliquot and freeze to avoid freeze-thaw of the antibody.

Our Guarantee

As an original manufacturer, we are dedicated to creating quality and reproducible antibodies that further your research. We provide personalized customer support from the scientists that made the antibody and offer a free replacement or 100% refund if we cannot resolve an issue. Order today and experience how chickens make better antibodies.

Note: For research use only. Not intended for therapeutic or diagnostic use. Use of all products is subject to our terms and conditions, viewable on our website.