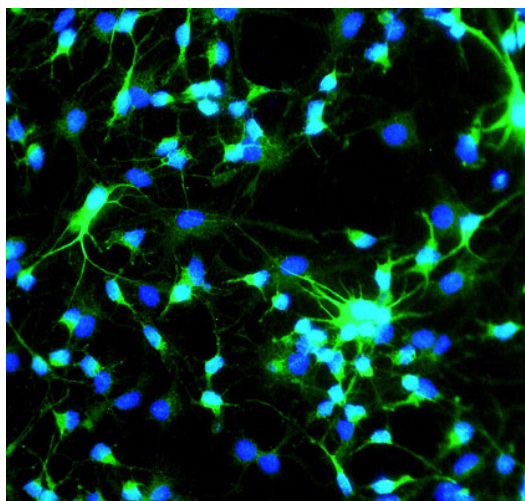
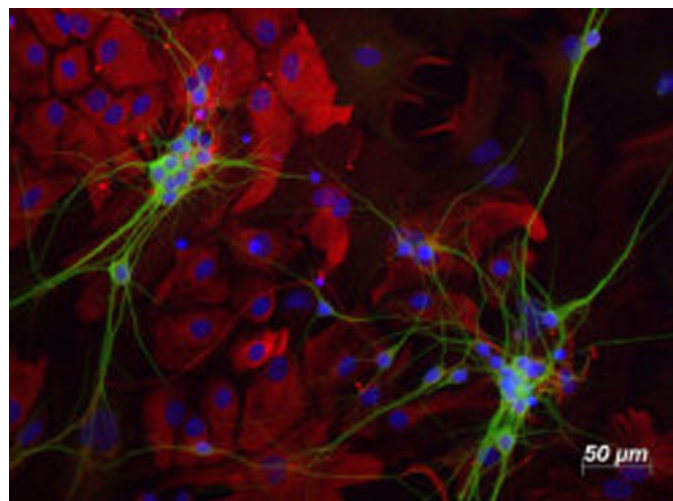


Product Datasheet**Chickens make *better* antibodies.****Anti-Microtubule-Associated Protein (MAP2) Antibody****Overview**

Catalog #	MAP (1000 μ L size) or MAP-0020 (100 μ L size)
Concentration	200 μ g/mL
Host Species	Chicken Polyclonal
Format	Affinity-Purified IgY
Buffer	Phosphate-buffered (10 mM) isotonic (0.9%, w/v) saline ("PBS," pH 7.2) with sodium azide (0.02%, w/v) added as a preservative.
Applications	IHC 1:1000-1:2000 ICC 1:1000-1:2000 WB 1:5000-1:10000
Species Reactivity	Human, Mouse, and Rat
Immunogen	Synthetic peptides
Molecular Weight	280 kDa
Cite this Antibody	Aves Labs Cat# MAP, or Aves Labs Cat# MAP-0020; RRID: AB_2313549

Images

MAP-2 immunoreactivity in neurosphere cultures from an e18 mouse brain (1:1000 dilution, green); 2° antibody was a fluorescein-labeled goat anti-chicken IgY (Aves Labs Cat No. F-1005, 1:500 dilution). Blue staining is DAPI nuclear stain. (Hoda Ilias, Aves Labs.)



Neonatal mouse brain cortical cultures were stained with Aves Labs MAP2 (green) and GFAP (red, rabbit antibody); Blue is DAPI nuclear stain. Photo courtesy of Dr. Gerry Shaw, Univ. Florida.

Details

Target Description	Human MAP-2 is a 199,296 dalton protein (1827 amino acids) expressed in neurons of the PNS and CNS, where it serves as a major component of the neuronal cytoskeleton. MAP-2 contributes to structural integrity and cell shape.
Purification Method	Chickens were immunized with two synthetic peptide / keyhole limpet hemocyanin (KLH) conjugates. These synthetic peptides corresponded to different regions of the MAP-2 gene product, but are shared between the human (NP_002365, NCBI) and mouse (P20357, NCBI) sequences. After repeated injections, immune eggs were collected, and the IgY fractions were purified from the yolks. These IgY fractions were then affinity-purified using a peptide column, and the concentrations of the eluates adjusted to 200 µg/mL. Finally, equal volumes of both of these affinity-purified anti-peptide antibodies were mixed, and the preparation was filter-sterilized.
Quality Control Tests	Both of these anti-peptide antibodies were analyzed by immunohisto-chemistry (at a dilution of 1:2000) using fluorescein-labeled goat anti-chicken IgY (1:500 dilution, Aves Labs Cat.# F-1005) as the secondary reagent.
Storage	Store at 4°C in the dark. Under these conditions, the antibodies should have a shelf life of at least twelve months, provided they remain sterile. For longer term storage, aliquot and freeze to avoid freeze-thaw of the antibody.

Our Guarantee

As an original manufacturer, we are dedicated to creating quality and reproducible antibodies that further your research. We provide personalized customer support from the scientists that made the antibody and offer a free replacement or 100% refund if we cannot resolve an issue. Order today and experience how chickens make better antibodies.

Note: For research use only. Not intended for therapeutic or diagnostic use. Use of all products is subject to our terms and conditions, viewable on our website.