

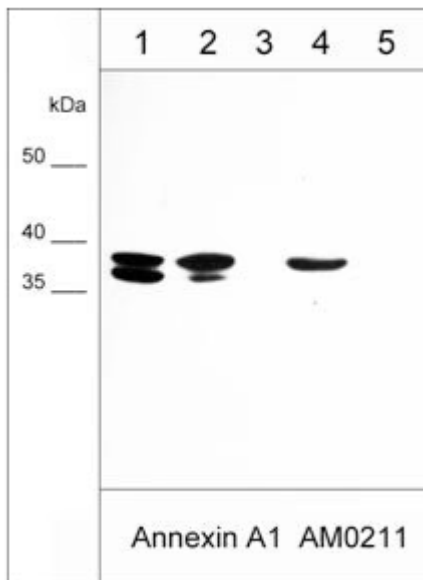
Product Datasheet

Anti-Annexin A1 Antibody

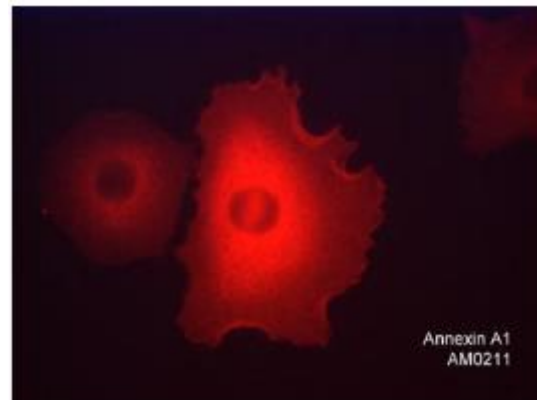
Overview

Catalog #	AM0211
Size	100 µL
Host Species	Mouse Monoclonal
Format	Protein G Purified
Applications	WB 1:1000 ICC 1:100 IP 1:100
Species Tested	Human
Immunogen	Clone M021 was generated from a proprietary antigen related to human Annexin A1 in the A549 lung carcinoma cell line.
Molecular Weight	38 kDa
Cite this Antibody	PhosphoSolutions Cat# AM0211, RRID:AB_3068354

Images



Western blot of human A431 cells (lane 1), A549 cells (lane 2), LNCaP cells (lane 3), full-length recombinant human annexin A1 (lane 4), and recombinant human annexin A2 (lane 5). The blot was probed with mouse monoclonal anti-Annexin A1 antibody (AM0211) at 1:1000 (lanes 1-5).



Immunocytochemical labeling of Annexin A1 in paraformaldehyde fixed human A549 cells. The cells were labeled with mouse monoclonal anti-Annexin A1 (clone M021). The antibody was detected using goat anti-mouse Ig DyLight® 594.

Details

Target Description

The Annexin family is composed of at least thirteen mammalian genes (Annexin A1-13). These proteins are characterized by a conserved core domain which binds to phospholipids in a Ca²⁺-dependent manner and a unique amino terminal region which may confer binding specificity. Annexins have roles in membrane fusion, endocytosis, secretion, and repair. Annexin A1 binds to cellular membranes in a calcium-dependent manner, promotes membrane fusion and endocytosis, and has been implicated as an anti-inflammatory mediator. Annexin A2 is a cytoskeletal calcium-dependent phospholipid binding protein, which has been shown to be a mediator of corticosteroid activity, a substrate for serine/threonine kinases and growth regulated tyrosine kinases, and may play a role in secretion. Annexin A5 is a PKC inhibitor, directly interacts with VEGFR2 receptor, and binds phosphatidylserine to inhibit blood coagulation. Annexin A6 reverses transformation of A431 cells after overexpression, and this effect may involve annexin A6 targeting of p120 RasGAP to the plasma membrane to inactivate Ras.

Specificity

Clone M021 detects a 38 kDa* protein corresponding to the molecular mass of Annexin A1 on SDS-PAGE immunoblots of human A431, MDA-MB-231, and A549. The antibody also detects full length recombinant human Annexin A1, but not Annexin A2 or Annexin A5 recombinant proteins. The antibody works for western blot, ELISA, immunocytochemical labeling, and immunoprecipitation.

Quality Control

Western blots performed on each lot.

Buffer

PBS + 1 mg/ml BSA, 0.05% NaN₃ and 50% glycerol

Storage

Storage at -20°C is recommended, as aliquots may be taken without freeze/thawing due to presence of 50% glycerol. Stable for at least 1 year at -20°C.

Stability

After date of receipt, stable for at least 1 year at -20°C.

Significant Citations

Vais, H., Wang, M., Mallilankaraman, K., Payne, R., McKennan, C., Lock, J.T., Spruce, L.A., Fiest, C., Chan, M.Y.L., Parker, I. and Seeholzer, S.H., 2020. ER-luminal [Ca²⁺] regulation of InsP3 receptor gating mediated by an ER-luminal peripheral Ca²⁺-binding protein. *Elife*, 9, p.e53531.

Vaňková, K., Marková, I., Jašprová, J., Dvořák, A., Subhanová, I., Zelenka, J., Novosádová, I., Rasl, J., Vomastek, T., Sobotka, R. and Muchová, L., 2018. Chlorophyll-mediated changes in the redox status of pancreatic cancer cells are associated with its anticancer effects. *Oxidative Medicine and Cellular Longevity*, 2018.

Our Guarantee

As an original manufacturer, we are dedicated to creating quality and reproducible antibodies that further your research. We provide personalized customer support from the scientists that made the antibody and offer a free replacement or 100% refund if we cannot resolve an issue. Order today and experience **Antibodies that Work™**.

Note: For research use only. Not intended for therapeutic or diagnostic use. Use of all products is subject to our terms and conditions, viewable on our website.