

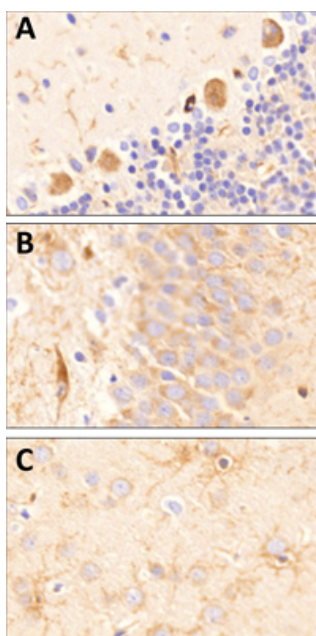
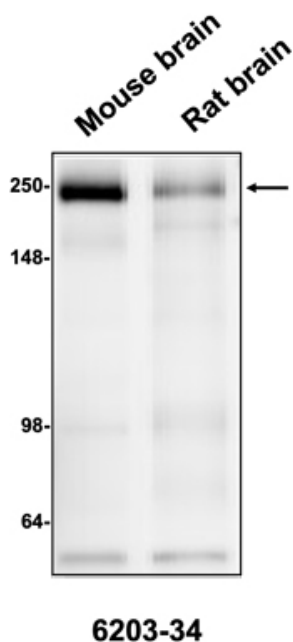
Product Datasheet

Anti-CSPG4/NG2 Antibody

Overview

Catalog #	77-523 (100 μ L size) or 77-523-020 (20 μ L size)
Conjugate	Unconjugated
Isotype	IgG1
Clone Number	6203-34
Concentration	1 mg/mL
Host Species	Mouse Monoclonal
Format	Purified by Protein A chromatography
Buffer	10 mM Tris, 50 mM Sodium Chloride, 0.065% Sodium Azide pH 7.4
Applications	IHC, WB
Species Reactivity	Human, Mouse, and Rat
Immunogen	Fusion protein amino acids S1583-S2224 of human CSPG4/NG2 (accession number Q6UVK1) produced in CHO cells
Molecular Weight	250 kDa
Cite this Antibody	Antibodies Inc Cat# 77-523, RRID: AB_2938812

Images



Far left: Western blotting of mouse or rat brain homogenate (10 μ g/lane) with Antibodies Incorporated anti-CSPG4/NG2 antibody at 1:50 dilution and detected with anti-mouse HRP.

Near left: Sagittal section of formalin-fixed, paraffin-embedded rat brain showing strong staining for CSPG4/NG2 in the cerebellum, hippocampus and cortex (A-C respectively). Sections were stained with Antibodies Incorporated mouse anti-CSPG4/NG2 (clone 6203-34) antibody at 1:40 dilution and detected with anti-mouse HRP.

Details

Target Description	Neuron-glia antigen 2 (NG2) is a chondroitin sulfate proteoglycan that is encoded by the CSPG4 gene in humans. It is an excellent oligodendrocyte marker. NG2 is a hallmark protein of oligodendrocyte progenitor cells (OPCs) and has been linked with familial schizophrenia (de Vrij, F.M., et al, 2018). NG2 also plays a role in stabilizing cell-substratum interactions during early events of melanoma cell spreading on endothelial basement membranes. It represents an integral membrane chondroitin sulfate proteoglycan expressed by human malignant melanoma cells (Luo, W., et al, 2006). NG2 localizes at the apical plasma membrane and relocates to the lamellipodia of astrocytoma upon PRKCA phosphorylation.
Specificity	No cross-reactivity reported.
Purification Method	Produced by in vitro bioreactor culture of hybridoma lines followed by Protein A affinity chromatography. Purified mAbs are >90% specific antibody.
Quality Control Tests	Each new lot of antibody is quality control tested by western blot on rat whole brain lysate and confirmed to stain the expected molecular weight band.
Storage	Aliquot and store at $\leq -20^{\circ}\text{C}$ for long term storage. For short term storage, store at $2-8^{\circ}\text{C}$. For maximum recovery of product, centrifuge the vial prior to removing the cap.

Our Guarantee

As an original manufacturer, we are dedicated to creating quality and reproducible antibodies that further your research. We provide personalized customer support from the scientists that made the antibody and offer a free replacement or 100% refund if we cannot resolve an issue. Order today and experience our 50+ year passion for science.

Note: For research use only. Not intended for therapeutic or diagnostic use. Use of all products is subject to our terms and conditions, viewable on our website.