

# CERTIFICATE OF ANALYSIS

## ISO/IEC 17025:2017 ACCREDITATION #103104



Order #: 60007  
 Order Name: Rice Treat  
 Batch#: 72020  
 Received: 06/14/2022  
 Completed: 06/22/2022

Protect Your Peace CBD  
 219 Jones Kane Rd, Williamstown  
 NJ 08094  
 pyp.cbdinfused@gmail.com  
 856-515-0336



### Sample



<b>0.022%</b> D9-THC	<b>N/D</b> Total CBD
<b>25.5 mg</b> Cannabinoids per unit	<b>N/D mg</b> CBD per unit

### Cannabinoids Test

SHIMADZU INTEGRATED UPLC-PDA

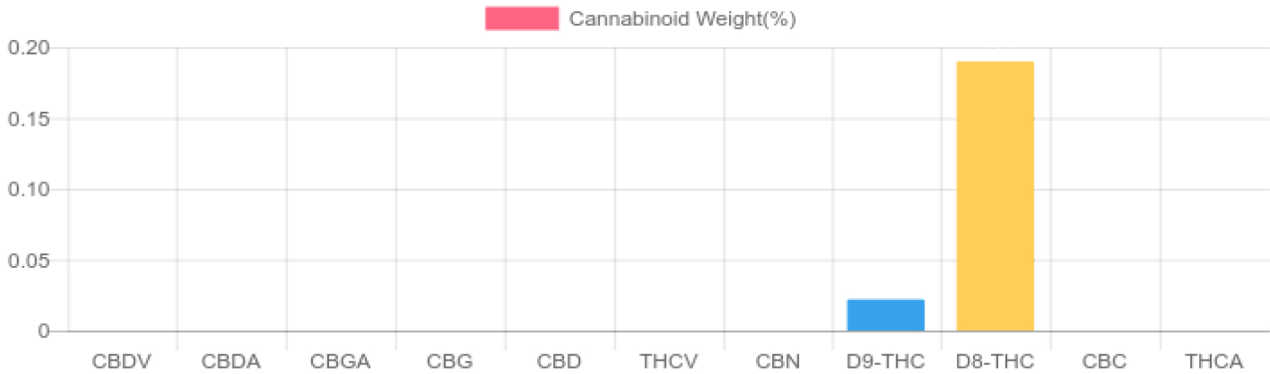
GSL SOP 400

PREPARED: 06/16/2022 18:36:08

UPLOADED: 06/20/2022 11:43:32

Cannabinoids	LOQ	weight(%)	mg/g	mg/unit
D9-THC	10 PPM	0.022%	0.223	2.7
THCA	10 PPM	N/D	N/D	N/D
CBD	10 PPM	N/D	N/D	N/D
CBDA	20 PPM	N/D	N/D	N/D
CBDV	20 PPM	N/D	N/D	N/D
CBC	10 PPM	N/D	N/D	N/D
CBN	10 PPM	N/D	N/D	N/D
CBG	10 PPM	N/D	N/D	N/D
CBGA	20 PPM	N/D	N/D	N/D
D8-THC	10 PPM	0.190%	1.901	22.8
THCV	10 PPM	N/D	N/D	N/D
TOTAL D9-THC		0.022%	0.022%	2.7
TOTAL CBD*		N/D	N/D	N/D
TOTAL CANNABINOIDS		0.212%	2.124	25.5

1 unit = 12 grams per unit x Cannabinoid concentration



Reporting Limit 10 ppm  
 \*Total CBD = CBD + CBDA x 0.877  
 N/D - Not Detected, B/LOQ - Below Limit of Quantification

Dr. Andrew Hall, Ph.D., Chief Scientific Officer

Ben Witten, MS, MT., Lab Director

**Green Scientific Labs**  
 info@greenscientificlabs.com  
 1-833 TEST CBD



Green Scientific Labs uses its best efforts to deliver high quality results and to verify that the data contained therein are based on sound scientific judgment and levels listed are guidelines only and all data was reported based on standard laboratory procedures and deviations. However Green Scientific Labs makes no warranties or claims to that effect and further shall not be liable for any damage or misrepresentation that may result from the use or misuse of the data contained herein in any way. Further, Green Scientific Labs makes no claims regarding representations of the analyzed sample to the larger batch from which it was taken. Data and information in this report are intended solely for the individual(s) for whom samples were submitted and as part of our strict confidentiality policy, Green Scientific Labs can only discuss results with the original client of record.