

Certificate of Analysis

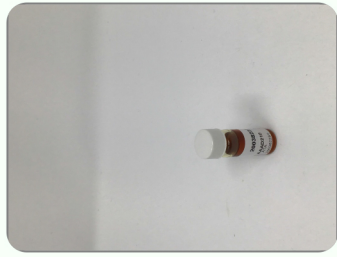
Order #: ATA200304-020031 **Order Date:** 2022-06-14 **Collection Date:** 2022-06-15 **Report Date:** 2022-06-22

Batch #: 2003822.80
Sample #: AAAD210
Specimen Type: CBD/HEMP Derivative Products (Ingestion)
Extracted From: Hemp
Description: 80 mg/ml CBD Gold in MCT

Initial Gross Weight: 8617mg
Density: .9713mg
Method: SOP-3



Potency
 Tested



The photos on this report are of a sample collected by the lab and may vary from the final packaging.

CBD Total 10.2758%	THC Total 0.2795%	CBG Total 0.0630%
CBN Total 0.0417%	Other Cannabinoids 0.2904%	Total Cannabinoids 10.9504%

Potency - 11 (Tested)

Analyte	Result (mg/ml)	(%)	LOQ (%)	Analyte	Result (mg/ml)	(%)	LOQ (%)	Analyte	Result (mg/ml)	(%)	LOQ (%)
CBC	2.821	0.290	0.001	CBD	91.506	9.421	0.001	CBDA	9.467	0.975	0.001
CBDV	<LOQ	0.001		CBG	0.612	0.063	0.001	CBGA	<LOQ	0.001	
CBN	0.405	0.042	0.001	Delta-8-THC	<LOQ	0.001		Delta-9-THC	2.715	0.280	0.001
THCA-A	<LOQ	0.001		THCV	<LOQ	0.001		Total CBD	99.809	10.276	0.001
Total THC	2.715	0.280	0.001								

*Total CBD = CBD + (CBD-A * 0.877), *Total THC = THCA-A * 0.877 + Delta 9 THC, *CBG Total = (CBGA * 0.877) + CBG, *CBN Total = (CBNA * 0.877) + CBN, *Other Cannabinoids Total = CBC + CBDV + THCV + THCV-A, *Total Detected Cannabinoids = CBD Total + CBG Total + CBN Total + THC Total + CBC + CBDV + THCV + THCV-A (mg/ml) = Milligrams per Milliliter, LOQ = Limit of Quantitation

Xueli Gao
 Xueli Gao
 Ph.D., DABT Lab Toxicologist

Aixia Sun
 Aixia Sun
 D.H.Sc., M.Sc., B.Sc., MT (AAB) Principal Scientist

This report shall not be reproduced, without written approval, from ACS Laboratory. The results of this report relate only to the material or product analyzed. Test results are confidential unless explicitly waived otherwise. Accredited by a third-party accrediting body as a competent testing laboratory pursuant to ISO/IEC 17025 of the International Organization for Standardization.