

RoHS 2011/65/EU & (EU) 2015/863 COMPLIANT

REV.	DESCRIPTION	DATE
△		2022/12/21
△	Correct the core wire color of the head	2023/01/05

APPROVED BY:

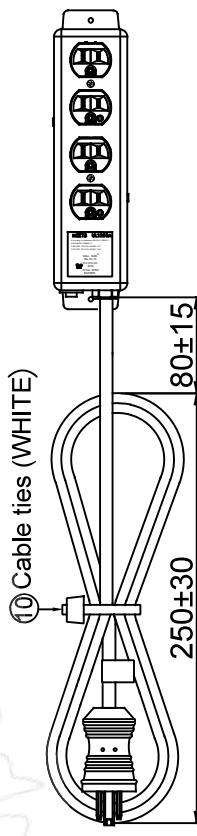
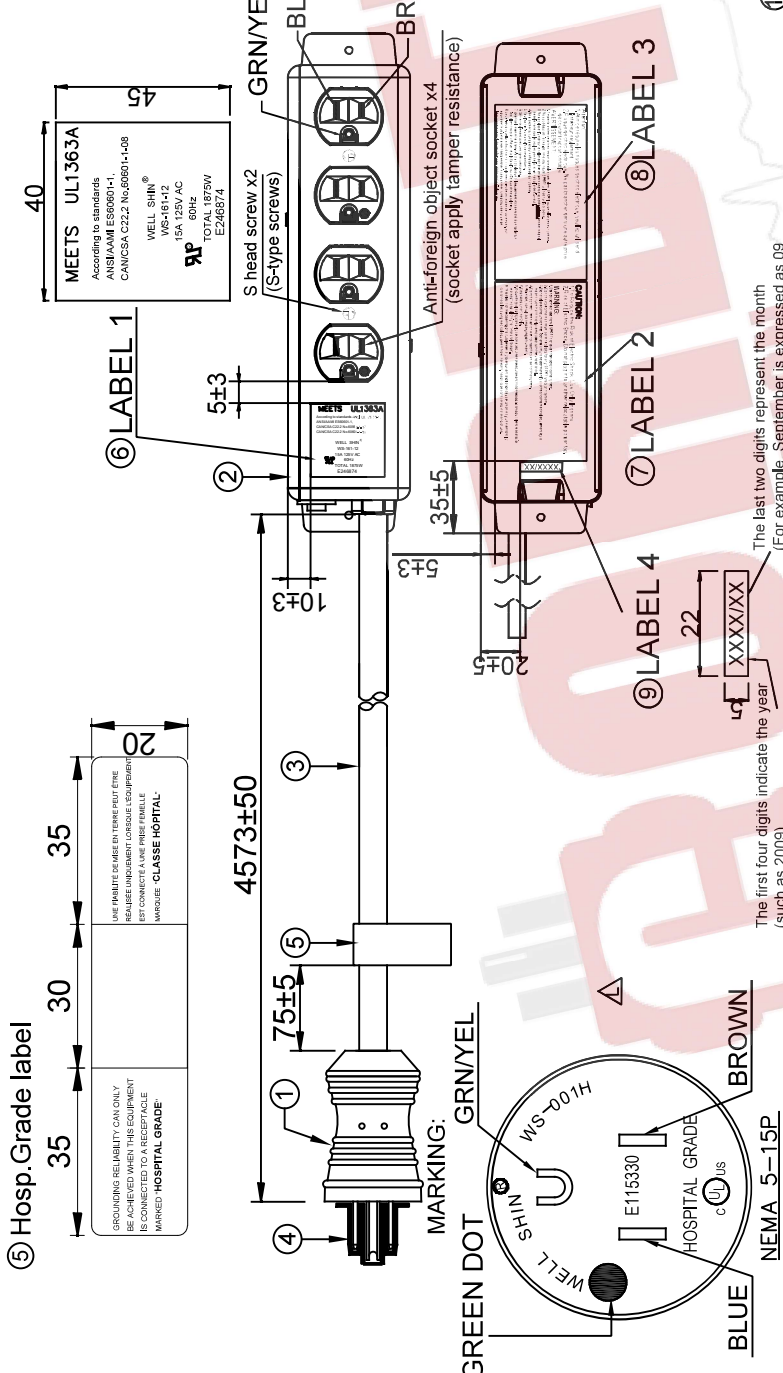
REV.

P/N: MD203-15

CUSTOMER:

NOTES:

- Each PCS is first wrapped with bubble cloth, then packed in a small bag, and built-in for use. Instruction manual, please refer to 0096-1729-1, Rev.B.
- "HOSPITAL GRADE" is in bold.
- The baking paint of the iron shell cannot fall off.
- The breaker should be assembled in place.
- WS-161-12A needs to refer to CNS when feeding the upper and lower covers. Standard salt spray test.
- Medical-grade sockets use anti-foreign object sockets (socket apply tamper resistance).
- Production in Changhua began to be issued from "Version C" ZH(Zhang Hua) factory begin with revision C.
- The outer box must be marked with RoHS (RoHS shown on the carton).
- Lock socket without gasket (No fiber washer on the screws holding the duplex outlets).
- The lock socket uses S-head screws (Use S type self locking screw to lock outlets).
- On the screw thread at the bottom of the S head, dip the screw fixative (material number: BB-2100) on the lock, and let stand for 24 hours.
- S base spiral tooth place, maintains the screw fixing agent (the material number: BB-2100) is locking, and settles for 24 hours.
- 12,13. For content and specifications of LABEL 2 and 3, please refer to: 0096-1729-2, Rev.A



ITEM	DESCRIPTION	COLOR	QTY
⑩	Cable ties	WHITE	1
⑨	LABEL 4	---	1
⑧	LABEL 3	---	1
⑦	LABEL 2	---	1
⑥	LABEL 1	---	1
⑤	Hosp.Grade label	WHITE	1
④	Plastic cap	RAL 9016 (WE-2985)	1
③	SJTW 14AWG 3C 105°C	APPROVAL: UL,CUL	1
②	WS-161-12A(5-15R)	15(A) 125(V) APPROVAL: UL, RU	1
①	WS-001H(5-15P)	15(A) 125(V) APPROVAL: UL,CUL	1

頭	尾	線種	線規	芯線數	溫度	顏色	總長度
WS-001H-1	WS-161-12A	SJTW	14AWG	3C	105°C	WE-2985	4573mm



AC Connectors of Cordtec Power Corp
 Main: 1-414-434-2220 Fax: 1-414-323-8886 Text: 1-414-323-3240
 Email: Info@CordtecPower.com
 Website: CordtecPower.com/ ACWORKS.com

SIGNATURE	
SAFETY ENGINEER:	
MANAGER BY:	
CHECKED BY:	
DRAWN BY:	

