



## User Manual

GoveeLife Smart Rice Cooker Pro



# Contents

<b>Safety Instructions</b>	<b>01</b>
<b>Included in the Box</b>	<b>02</b>
<b>Introduction</b>	<b>03</b>
<b>Getting Started</b>	<b>07</b>
<b>Govee Home App</b>	<b>10</b>
<b>Troubleshooting</b>	<b>11</b>
<b>Appendix</b>	<b>14</b>

# GoveeLife Smart Rice Cooker Pro User Manual

## Safety Instructions

### General Safety

## IMPORTANT SAFEGUARDS

When using electrical appliances, basic safety precautions should always be followed including the following:

- Read all instructions.
- Do not touch hot surfaces. Use handles or knobs.
- To protect against electrical shocks, do not immerse cords, plugs, or the appliance in water or other liquids. See instructions for cleaning.
- Close supervision is necessary when any appliance is used by or near children.
- Unplug from the outlet when not in use and before cleaning. Allow it to cool before putting on or taking off parts.
- Do not operate any appliance with a damaged cord or plug or after the appliance malfunctions or has been damaged in any manner. Return the appliance to the nearest authorized service facility for examination, repair, or adjustment.
- The use of accessory attachments not recommended by the appliance manufacturer may cause injuries.
- Do not use outdoors. Household use only.
- Do not let the cord hang over edge of the table or counter, or touch hot surfaces.
- Do not place on or near a hot gas or electric burner, or in a heated oven.
- Extreme caution must be used when moving the appliance containing hot oil or other hot liquids.
- Always attach the plug to the appliance first, then plug the cord into the wall outlet. To disconnect, turn any control to "off", then remove the plug from the wall outlet.
- Do not use the appliance for other than the intended use.
- Do not need to preheat when using the appliance.
- Intended for countertop use only.
- **WARNING:** Spilled food can cause serious burns. Keep the appliance and cords away from children. Never drape cord over edge of counter, never use outlet below counter, and never use with an extension cord.

## SAVE THESE INSTRUCTIONS

## Power Cord & Plug

- This appliance has a polarized plug (one blade is wider than the other). To reduce the risk of electric shock, this plug is intended to fit into a polarized outlet only one way. If the plug does not fit fully into the outlet, reverse the plug. If it still does not fit, contact a qualified electrician. Do not attempt to modify the plug in any way.
- A short power-supply cord is provided to reduce the risk resulting from becoming entangled in or tripping over a longer cord.
- Do not use an extension.
- If the power cord or the plug is damaged, please contact customer service for repair or similar professionals to avoid danger.

## Risk of Leaks & Electric Shock

- The appliance must be disconnected from power before cleaning or other maintenance, and any other servicing should be performed by an authorized service representative.
- To reduce the risk of electrical shock. Cook only in the removable inner cooking pot provided.
- Always make sure the exterior surface of the inner cooking pot is dry before use. The wet surface of the pot may damage or cause the product to malfunction.

## Included in the Box

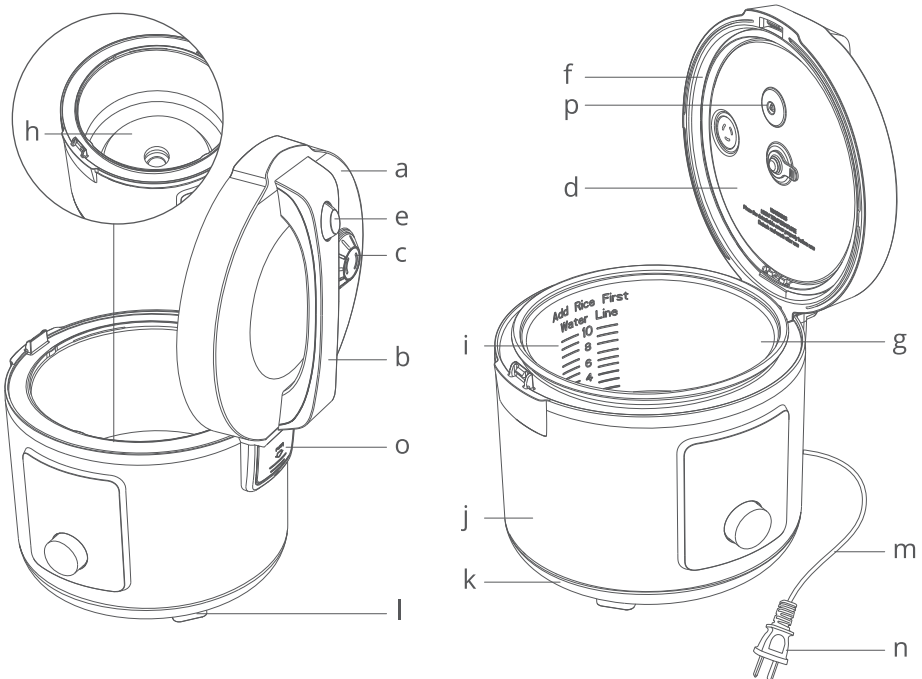
Item	Quantity
Rice Cooker	1
Steamer	1
Rice Spatula	1
Soup Spoon	1
Inner Lid	1 (Built-in)
Condensation Collector	1 (Built-in)
User Manual	1

# Introduction

The GoveeLife Smart Rice Cooker Pro is specially designed for American kitchens. It has a unique weighing scale in the inner pot, and a high-power heating element, which can make the cooking process of each dish more interesting.

## Part Names

- a. Upper Lid
- b. Handle
- c. Steam Release
- d. Inner Lid (detachable)
- e. Release Button
- f. Sealing Ring
- g. Inner Pot
- h. Heating Element
- i. Max Fill Line
- j. Cooker Housing
- k. Base
- l. Non-slip Feet
- m. Power Cord
- n. Plug
- o. Condensation Collector
- p. Temperature Sensor



## Controls

**RICE:** Touch to enter the RICE Mode. You can set the timer. The screen will display the corresponding countdown based on the food's weight.

**Note:** Due to different amounts of rice, the device will automatically modify the countdown of finishing the cooking. This may deviate by up to 20 minutes from the scheduled finishing time.

**SAUTE:** Touch to enter the SAUTE Mode and the screen will start to display how long the device has been working.

**Note:** Do not use any metal or hard spatulas to avoid damaging the internal surfaces of the pot. Silicone or wooden cookware is recommended.

**STEAM:** Touch to enter the STEAM Mode. You can set the timer and working time. The screen will display the countdown.

**Note:** The countdown of STEAM Mode will be calculated from the moment the water boils. Similarly, due to different amounts of water, the boiling time will also affect the scheduled finishing time.

**SLOW COOK:** Touch to enter the SLOW COOK Mode. You can set the timer and working time. The screen will display the countdown.

**DIY:** Touch to enter the DIY Mode. You can set the target temperature and working time in the app, and the screen will display the countdown. You can also set the target temperature and working time for different time periods in the app to meet specific cooking demands. For example, boiling water for tea, slow cook, soaking, etc., which need different heating temperatures in different periods.

When any of the five modes above is readying, the indicator will flash. Touch START, and the indicator will turn solid white.

**SCALE:** Touch to enter the SCALE Mode or delete the current reading. The screen will display the weight of the food. Touch to enter the SCALE Mode. Then you can select the unit of the scale from g, oz, and lb by rotating the knob clockwise.

**Note:** 1. The Max weight is 5KG.

2. To ensure the precision of the weight, please place the product on a level, hard surface.

3. If there is no operation under SCALE Mode within 2 minutes, or you press CANCEL, it will exit SCALE Mode.

**TIMER:** Set the timer with the knob.









**KEEP WARM:** Start to keep warm.

**START:** Start the current procedure.

**CANCEL:** Cancel the current procedure and enter the Standby Mode.

**Knob:** Adjust the time and heating level (only in SAUTE and SLOW COOK Mode).  
Twist counterclockwise to decrease or clockwise to increase.

## Indicator Status

Indicator	Working Status	Light Status
	Bluetooth Broadcasting	Flashes White
	Wi-Fi is Connected	Solid White
	Wi-Fi is not Connected/is Disconnecting	Light Off
	Timer is Set	Solid White
	In Standby Mode	Solid White
	Keeping Warm	Solid White
MIN	Displaying Minutes	Solid White
SEC	Displaying Seconds	Solid White
g	Displaying Weight	Solid White
OZ		
lb		
  	Displaying the Heating Level (Only in SAUTE and SLOW COOK Mode)	Solid White
	RICE/SAUTE/STEAM/SLOW COOK/DIY Mode is Readying	Flashes White
	RICE/SAUTE/STEAM/SLOW COOK/DIY/SCALE Mode is On	Solid White



## Functions

### Memory Function

This rice cooker will save its previous settings when powered off. When it is powered back on, the settings will resume.

### Smart Function

After connecting with Govee Home App, you can set the device according to your cooking habits and explore more delicious food with the help of the in-app recipes.

### Boil Dry Protection

The product will automatically stop heating and enter the Standby Mode after detecting no food/water remaining in the pot to avoid safety risks due to high temperatures. If the protection is triggered, the product will only resume work after it has cooled down.

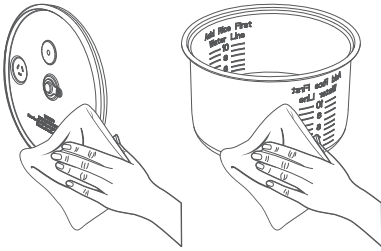
### Scale Function

The rice cooker is equipped with a high-precision weight sensor which can weigh food within 5KG to make your cooking easier.

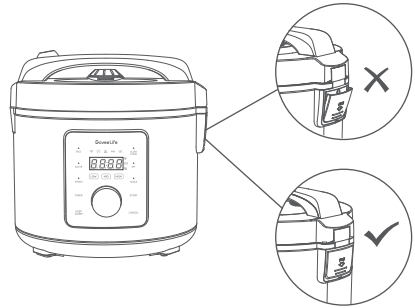
Note: To ensure the precision of the weight, please place the product on a level, hard surface.

# Getting Started

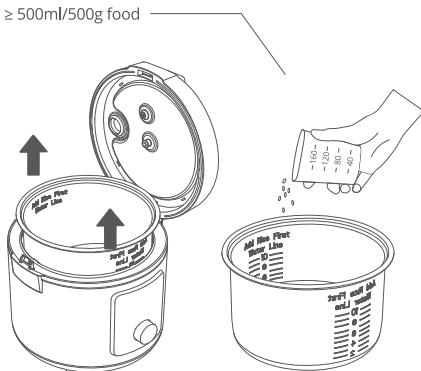
1. Carefully read all safety instructions and labels. Remove all packaging of the rice cooker and its accessories.
2. Before the first use, clean the inner pot, inner lid and all other accessories.



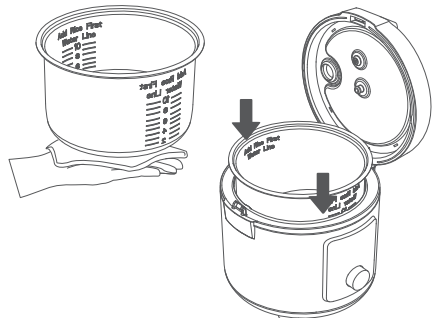
3. Make sure the condensation collector is correctly installed before use. Grip the upper part of the condensation collector (with the remark "PUSH" facing towards you), slide it into the slot, and press the top of it to put it into place. Press at the PUSH mark and slide it out.



4. Press the release button on the handle. Open the upper lid and take out the inner pot. Add food into it according to your needs. Please do not add less than 500ml/500g of food at any time.



5. Wipe the surfaces of the inner pot to make them clean and dry before placing it back onto the heating element. Make sure no food or water is left on the bottom of the inner pot. After that, gently twist the pot left and right to make sure it is placed properly.



6. Decide whether it is necessary to close the lid while cooking according to the cooking procedure or recipe. If you need to close the lid, put down the lid and then gently press to make sure the lid is fixed.



7. Start cooking: After selecting the mode, the indicator will start to flash. Touch START to start the procedure. If you do not touch START after selecting the mode, the cooker will automatically work in the mode you selected 10 seconds later. The screen will display the countdown or how long it has been working according to the mode you set.



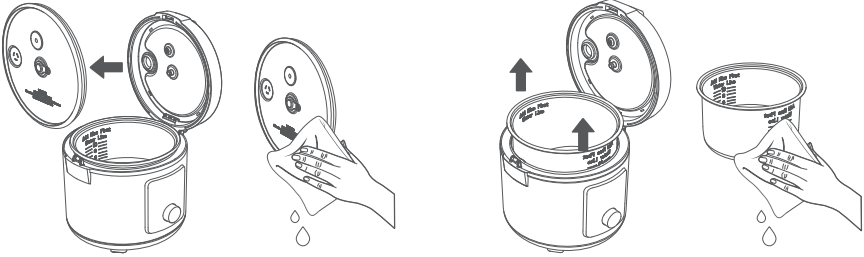
8. It is recommended that after finishing every cooking procedure, wait until the inner lid reaches the room temperature to detach and wash it, and put the inner lid back to place before using it next time. Do not forget to clean the water in the condensation collector.

### Safety Tips:

1. Before using, make sure the product is properly placed onto the heating element. Do not let other containers other than the included inner pot touch the heating element directly. The inner lid and condensation collector should be properly placed. Make sure the surfaces of the inner pot are clean and dry before putting it back onto the heating element.
2. Do not touch hot surfaces during use. If you need to open the lid, beware of the hot steam emitted from the steam vent.
3. Do not add food that exceeds the Max fill line.

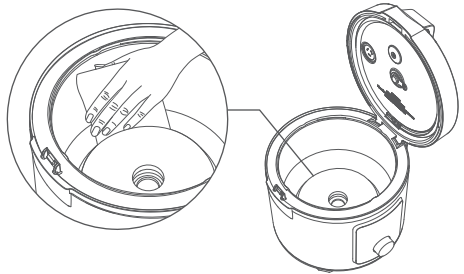
## Cleaning Tips:

1. Before cleaning, unplug the power cord to let the product cool down until it reaches the room temperature.
2. Open the lid and detach the inner lid. Take out the inner pot and clean the pot and the inner lid.

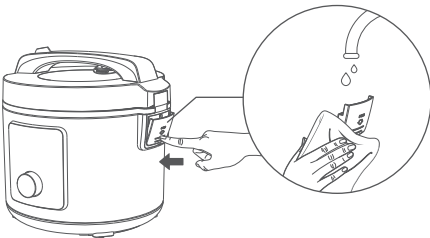


3. Use a clean cloth to wipe the surfaces of the inner pot. Pay special attention to clean the groove surrounding the heating element.

Note: When cleaning, do not use any hard objects that may easily scratch the surfaces of the pot, such as steel wool.



4. Detach and wash the condensation collector.



5. Clean the outer surfaces of the cooker with a wet cloth.



**Note:**

- All accessories including the inner pot, inner lid, steamer etc., are all dishwasher safe.
- Do not use corrosive detergent.
- The inner pot has non-stick coating. Avoid cleaning or scrubbing it with steel wool or metals so that it won't affect your normal use.

## Govee Home App

You can access more features using Govee Home App.

### Downloading Govee Home App

To download Govee Home App, scan the QR code or search for “Govee” in the Apple App Store® (iOS) or Google Play Store (Android).



Govee Home App



**Note:**

- Choose “Allow” to the permissions requested when opening Govee Home App for the first time. These permissions allow the app’s features to function normally and are not used to record personal, private information.
- Due to ongoing updates, Govee Home App may be slightly different than shown in this manual. In case of any differences, always follow the in-app instructions.

### Pairing with Govee Home App

1. Turn on your smartphone's Bluetooth.
2. Open Govee Home App, tap the “+” icon in the top right corner and search for “H7180.”
3. Tap the device icon and follow the on-screen instructions to complete pairing.

**Note:**

- You can use Govee Home App to connect your rice cooker to Amazon Alexa or Google Assistant. Follow the in-app instructions to connect to each voice assistant.
- Govee Home App is being continually updated and its features do expand.

# Troubleshooting

The troubleshooting section below is for solving frequently asked questions. If your problem persists, please contact Customer Support.

## For Rice Cooker

Problem	Solution
The upper lid cannot be opened	Check if the release button is damaged or not. If it is damaged, contact Customer Support.
	Wait until the cooker reaches room temperature and try again.
	The overflow of food might have stuck the upper lid and the cooker body. Clean the cooker and try again.
The upper lid cannot be closed	Do not add food or water that exceeds the Max fill line.
	Check whether the inner pot is properly placed (refer to "Getting Started 5").
	Check whether the inner lid is properly placed (refer to "Safety Tips 1").
The buzzer does not sound	Check whether the Do Not Disturb Mode is on.
The screen and indicator lights do not light up	Check whether the Do Not Disturb Mode is on.
The device is not working	Check whether the plug is plugged in properly.
	Check whether the outer surface of the pot is dry.
	Contact Customer Support.
The screen displays "err0"	The cooker is boiling dry. Add food to the pot or unplug the power cord.
The screen displays "err1"	The unit is overheating inside. Unplug the power cord.
The screen displays "err2"	The internal accessories of the product are broken. Stop using and contact Customer Support.

The screen displays "err4"	The food surpasses the 5kg weight limit of the scale.
The rice is overcooked	Added too much water. Refer to a recipe or adjust the amount of water based on the water level lines inside the pot.
The rice is underdone or too hard	Not enough water. Refer to a recipe or adjust the amount of water based on the water level lines inside the pot.
	Do not open the lid during the cooking process or right after the cooking is finished. It is recommended to let the rice rest inside the cooker for at least 5 minutes when the unit finishes cooking to get a better rice texture.
The temperature is too high for saute or slow cook	Twist the knob to cycle through LOW, MID, and HIGH levels.
The food is underdone after being braised	Please add water to the Min Water Level.
The food is too soft after being braised	Properly reduce the cooking time for braising.
	Do not add excessive water to the pot to avoid wetting the food after the water boils.
The scale has a large error range	Touch to delete the current reading.
	Place the product on a level and hard surface.
	Contact Customer Support.
The knob is broken / Cannot make any settings	Contact Customer Support.

## For App & Connectivity

### 1. Cannot connect to Govee Home App.

- Make sure your phone is powered on and is not connected with other Bluetooth devices.
- Enable the phone's Location Services.
- Try connecting with another phone.
- Make sure your app is updated to the latest version.
- Make sure you connect to your Wi-Fi router's 2.4GHz network and that the network is working correctly.
- Make sure the Wi-Fi password you entered is correct.
- Shorten the distance between the rice cooker, Wi-Fi router, and the phone.
- Make sure your rice cooker and the Wi-Fi router are located away from appliances that produce electromagnetic radiation (e.g. microwave ovens, refrigerators, etc.)
- If you are using a VPN, try turning it off and then connecting the rice cooker.
- Disable portal authentication for your Wi-Fi network. If portal authentication is enabled, this rice cooker will not be able to access your Wi-Fi network, and setup will fail. Portal authentication means that you need to sign in to your Wi-Fi network through a web page before you can use the Internet.

### 2. Cannot find the device on the Bluetooth Device Nearby page of the app.

- The rice cooker may be connected with another phone. Disconnect it from the other phone first.

### 3. The rice cooker is offline.

- Make sure the rice cooker is plugged in and powered on, then refresh "My Devices" in Govee Home App by swiping down on the screen.
- Make sure your router is connected to the internet, and your phone's network connection is working.
- If the Wi-Fi password has been changed, the rice cooker will automatically go offline. Try connecting it to the network again.
- Delete the offline rice cooker from Govee Home App, then add and reconfigure the rice cooker again in the app.



# Appendix

## After-Sales Service

-  Warranty: 12-Month Limited Warranty
-  Support: Lifetime Technical Support
-  Email: support@govee.com
-  Official Website: www.govee.com
-  @Govee     @goveeofficial     @govee.official
-  @GoveeOfficial     @GoveeOfficial

## Specifications

Model Name	H7180
Power Supply	AC 120V, 60Hz
Rated Power	1000W
Working Temperature	-5°C to 40°C / 23°F to 104°F

## Compliance Information

### FCC Statement

This device complies with Part 15 of the FCC Rules. Operation is subject to the following two conditions:

(1) This device may not cause harmful interference, and (2) This device must accept any interference received, including interference that may cause undesired operation.

Warning: Changes or modifications not expressly approved by the party responsible for compliance could void the user's authority to operate the equipment.

**Note:** This equipment has been tested and found to comply with the limits for a Class B digital device, pursuant to Part 15 of the FCC Rules. These limits are designed to provide reasonable protection against harmful interference in a residential installation.

This equipment generates uses and can radiate radio frequency energy and, if not installed and used in accordance with the instructions, may cause harmful interference to radio communications. However, there is no guarantee that interference will not occur in a particular installation. If this equipment does cause harmful interference to radio or television reception, which can be determined by turning the equipment off and on, the user is encouraged to try to correct the interference by one or more of the following measures:

- (1) Reorient or relocate the receiving antenna.
- (2) Increase the separation between the equipment and receiver.
- (3) Connect the equipment into an outlet on a circuit different from that to which the receiver is connected.
- (4) Consult the dealer or an experienced radio/TV technician for help.

## FCC Radio Frequency Exposure Statement

This equipment complies with FCC radiation exposure limits set forth for an uncontrolled environment. This equipment should be installed and operated with minimum distance 20cm between the radiator & your body.

The following importer is the responsible party

Name: GOVEE MOMENTS (US) TRADING LIMITED

Address: 2501 Chatham Rd Suite R Springfield IL 62704

Email: support@govee.com

Contact information: <https://www.govee.com/support>



FOR INDOOR USE ONLY

The Bluetooth® word mark and logos are registered trademarks owned by Bluetooth SIG, Inc. and any use of such marks by Shenzhen Qianyan Technology LTD is under license.

The trademark GoveeLife has been authorised to Shenzhen Qianyan Technology LTD. Copyright ©2021 Shenzhen Qianyan Technology LTD. All Rights Reserved.



**Govee Home App**

For FAQs and more information,  
please visit: [www.govee.com](http://www.govee.com)