

## Troubleshooting

### ① The adhesive tape is not strong enough.

Use the clips to secure the light firmly during installation.

### ② Cannot connect to Bluetooth.

- Do not skip the Bluetooth connection steps in the app.
- Ensure the Bluetooth on your smartphone has been turned on.
- Your smartphone may be incompatible with Govee Home App. Try using a different smartphone then reconnect.
- Power the light and your smartphone's Bluetooth off then on, then try again.
- Ensure that your smartphone is within 1m/3.28ft of the light when connecting.
- Clear any obstructions that are between the light and your smartphone.

### ③ Some LED beads flicker./Some LED beads do not light up.

- Apply any color in Color Mode to check if any DIY or Scene Mode is turned on.
- Check whether the waterproof connector and nuts are fixed firmly.
- Plug out the adapter port. Wait for 5 seconds and plug it back in.

### ④ For other issues

Please contact the Govee support team.

### ⑤ Cannot sync the light to the beat of my music.

- Move the control box closer to the music source.
- Clean the mic on the control box then try again.

### ⑥ Cannot connect to Wi-Fi.

- Do not skip the Wi-Fi connection steps in the app.
- 5GHz network is not supported. Please set the router to 2.4GHz

and then reset it.

- Connect your smartphone to Wi-Fi and check whether the network works well.
- Make sure you have entered the correct Wi-Fi name and password.
- Change your Wi-Fi password to a brief one. 8 numbers and letters are suggested.
- Connect your smartphone's hotspot to the lights and check whether the router works with the lights.

### ⑦ Cannot connect to Alexa or Google Assistant.

- Pull out every connective part of the lights and firmly reconnect them.
- Reconnect your smartphone to Wi-Fi.
- Plug out the adapter port and plug it back in.




## Customer Service

 Warranty: 12-Month Limited Warranty

 Support: Lifetime Technical Support

 Email: support@govee.com

 Official Website: www.govee.com

 @Govee  @govee\_official  @govee.official

 @Goveeofficial  @Govee.smarthome

## FCC and ISED Canada Statement

This device complies with Part 15 of the FCC Rules and Industry Canada licence-exempt RSS standard(s). Operation is subject to the following two conditions:

- (1) This device may not cause harmful interference, and
- (2) This device must accept any interference received, including interference that may cause undesired operation.

Warning: Changes or modifications not expressly approved by the party responsible for compliance could void the user's authority to operate the equipment.

Le présent appareil est conforme aux CNR d'Industrie Canada applicables aux appareils radio exempts de licence.

L'exploitation est autorisée aux deux conditions suivantes :

- (1) l'appareil ne doit pas produire de brouillage, et
- (2) l'utilisateur de l'appareil doit accepter tout brouillage radioélectrique subi, même si le brouillage est susceptible d'en compromettre le fonctionnement.

**NOTE:** This equipment has been tested and found to comply with the limits for a Class B digital device, pursuant to Part 15 of the FCC Rules.

These limits are designed to provide reasonable protection against harmful interference in a residential installation. This equipment generates uses and can radiate radio frequency energy and, if not installed and used in accordance with the instructions, may cause harmful interference to radio communications. However, there is no guarantee that interference will not occur in a particular installation. If this equipment does cause harmful interference to radio or television reception, which can be determined by turning the

equipment off and on, the user is encouraged to try to correct the interference by one or more of the following measures:

1. Reorient or relocate the receiving antenna.
2. Increase the separation between the equipment and receiver.
3. Connect the equipment into an outlet on a circuit different from that to which the receiver is connected.
4. Consult the dealer or an experienced radio/TV technician for help.

This Class B digital apparatus complies with Canadian ICES-005. Cet appareil numérique de la classe B est conforme à la norme NMB-005 du Canada.

The trademark Govee has been authorised to Shenzhen Qianyan Technology LTD. Copyright ©2021 Shenzhen Qianyan Technology LTD. All Rights Reserved.

## FCC and IC Radiation Exposure Statement

This equipment complies with FCC and IC radiation exposure limits set forth for an uncontrolled environment. This equipment should be installed and operated with minimum distance 20cm between the radiator & your body.

Lors de l'utilisation du produit, maintenez une distance de 20 cm du corps afin de vous conformer aux exigences en matière d'exposition RF.

This device uses a non-replaceable light source. When the light source reaches the end of its life cycle, this device should be replaced.

Not intended for illumination. Only used for creating ambiance.

- 1.Do not connect the rope light to the supply while it is in the packing or wound onto a reel;
- 2.Do not use the rope light when covered or recessed into a surface;
- 3.Do not open or cut the rope light;

### Responsible party :

Name: GOVEE MOMENTS(US) TRADING LIMITED

Address: 2501 Chatham Rd Suite R Springfield IL 62704

Email: certification@govee.com

Contact information: <https://www.govee.com/support>



# User Manual

Model: H70A2

Govee Outdoor Strip Light Pro

## READ AND SAVE THESE INSTRUCTIONS

### Safety Instructions

- This product and control box are both rated as IP65. It can be used outdoors but cannot be immersed in water.
- The power adapter is rated as IP44. It can be used outdoors but cannot be rinsed or immersed in water.
- To prevent the strip light from falling down, ensure it is installed with both the adhesive tape and the clips.
- Tighten up the waterproof cap before using the light.
- Do not allow children to assemble and install this product.
- Avoid installing this product near major heat sources or other dangerous sources.
- Avoid using other non-standard adapters for this product.
- External dimmer cannot be used with this product.
- Use this product with the provided power adapter only.

### Introduction

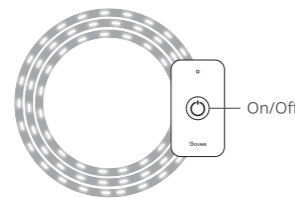
Thanks for choosing the Govee Outdoor Strip Lights. This product supports app and voice control via Alexa and Google Assistant. RGBIC is Govee's latest lighting display technology. With an IP65 water-resistant rating, the strip light can safely bring you a colorful lighting experience.

01

### What You Get

Item	Quantity
Strip Light	2
Power Adapter	1
User Manual	1

### At a Glance



Press to turn on or off.  
Press and hold for 5 seconds to reset.

02

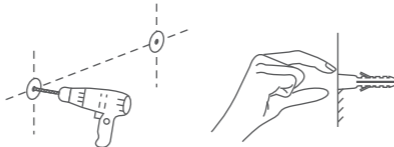
### Installing Your Device

#### Before You Install

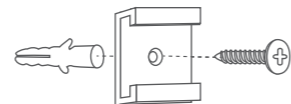
- ① Unpack the box and check all items listed in the packing list.
- ② Power on the strip light and check whether it lights up.

#### Installing Steps

- ① Drill a hole in the wall for clip installation. Make sure the plastic anchor can fit in the hole firmly.

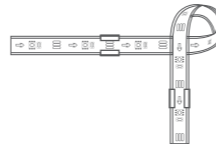


- ② Align the clip with the plastic anchor and attach it to the wall. Insert the screw into the hole and firmly secure it in the plastic anchor.

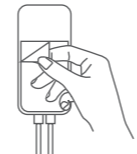


03

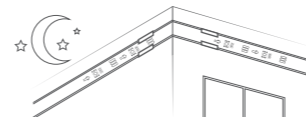
- ③ Wipe the surface of the wall to ensure it is dry and clean. Tear off the film on the 3M adhesive tape and stick the strip light onto the installing location. Press down on the strip light repeatedly to ensure it is firmly attached.



- ④ Remove the protective film on the control box to stick it to the chosen location.



- ⑤ Power on the strip light and begin using!



04

### Pairing Your Light with Govee Home App

#### What You Need

- A Wi-Fi router supporting the 2.4GHz and 802.11 b/g/n bands. 5GHz is not supported.
- A smartphone or tablet running iOS 8.0 (or above) or Android 4.3 (or above).



- ① Download Govee Home app from the App Store (iOS devices) or Google Play (Android devices).
- ② Turn on the Bluetooth on your smartphone.
- ③ Open the app, tap the "+" icon in the top right corner and search for "H70A2".
- ④ Tap the device icon and follow the on-screen instructions to complete pairing.

05

### Controlling the Light with Your Voice

1. Open the app, then tap the device icon to enter the details page.
2. Tap the settings icon in the top right corner.
3. Select User Guide and follow the on-screen instructions to control the device using your voice.

### Specifications

Power Input (Adapter)	100-240VAC 50/60Hz
Power Input (Light)	36VDC 1.5A
Length	65.6ft/20m
Waterproof	Strip Light: IP65 Control Box: IP65 Adapter: IP44
Light Displaying Technology	RGBIC
Color Temperature	2700K-6500K
Working Temperature	-20 to 40° C (-4° to 104°F)

06



Govee Home App

For FAQs and more information,  
please visit: [www.govee.com](http://www.govee.com)

H70A2 英文说明书

版本:1.0

料号:807-0003-00689

成型尺寸:75×105 (mm)

材质:80G书页纸

工艺:单色印刷

折叠方式:风琴折