

READ AND SAVE THESE INSTRUCTIONS

Safety Instructions

- This product is rated as IP65 Waterproof. It can be used outdoors but cannot be immersed in water.
- The power adapter is rated as IP44 Waterproof. It can be used outdoors but cannot be rinsed or immersed in water.
- Tighten up the waterproof cap before installing the Spotlights.
- The internal light sources of the light bars and strip light cannot be replaced. If the light sources sustain damage, the product should be replaced.
- Do not allow children to assemble and install this product without adult supervision.
- Avoid installing this product near major heat sources.
- External dimmers cannot be used with this product.
- Use this product with the provided power adapter only.

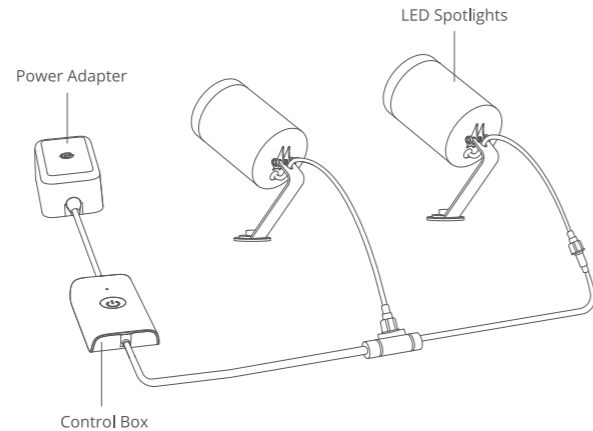
Introduction

Thanks for choosing Govee LED Spotlights. You can use Govee Home App to adjust light color, select modes, and set timers.

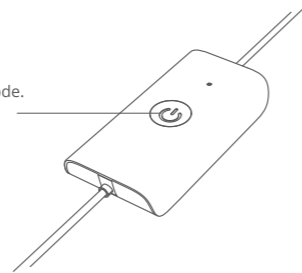
What You Get

Item	Quantity
LED Spotlights	2
Power Cable	1
Ground Sticks	2
Screws	2
User Manual	1
Service Card	1

At a Glance



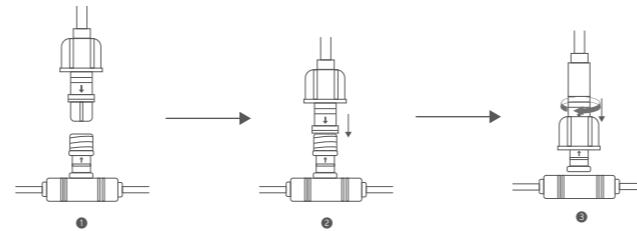
- Press to turn the light on and off.
- Press twice to switch the light to Illumination Mode.
- Press and hold for 5 seconds to reset.



Installing Your Spotlights

Installing Your Spotlights on the ground

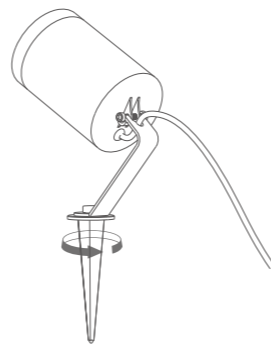
1. Attach the 2 LED Spotlight to the control cable. Tighten the waterproof cable protector.



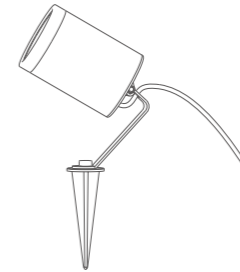
Note: Only when all two lights are attached on the control cable can this device function properly.

2. Attach a ground stake to the stand of each LED Spotlights.

Note: If you plan to install this product on very hard ground, please separately purchase expansion bolts or metal stakes.

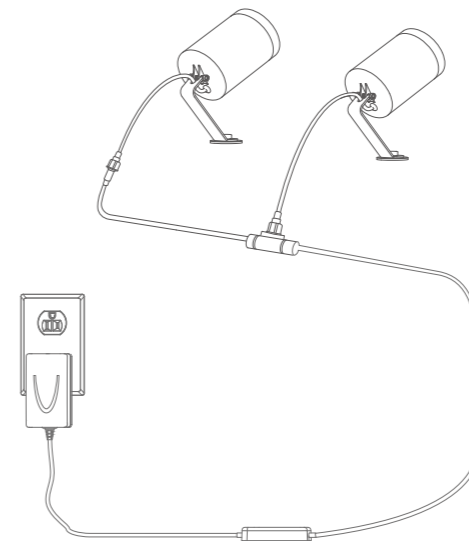


3. Install each spotlight on the ground and adjust the angle of its beam.



4. Plug the power adapter into power.

Note: Avoid placing the control box directly on the ground, otherwise the Wi-Fi and Bluetooth connection may be intervened.

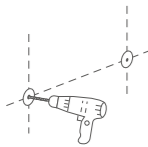


Govee Home App

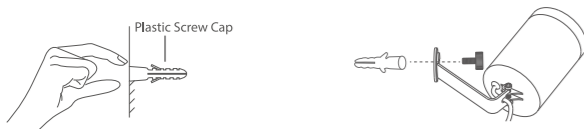
For FAQs and more information, please visit: www.govee.com

Installing Your Spotlights on the wall

1. Select a suitable installation area on the wall and use an electric drill to make holes for attaching the mounting brackets.



2. Insert a plastic screw cap into each hole. Next, align the mounting brackets with the drilled holes and screw caps (making sure each bracket is pointing front), and screw the brackets into the wall.



3. Attach the 2 LED Spotlight to the control cable. Tighten the waterproof cable protector. **Note:** Only when all two lights are attached on the control cable can this device function properly.

4. Plug the power adapter into power. **Note:** Avoid placing the control box directly on the ground, otherwise the Wi-Fi and Bluetooth connection may be intervened.

Pairing Your Device with Govee Home App

What You Need:

- A Wi-Fi router supporting the 2.4GHz and 802.11 b/g/n bands (5GHz is not supported).
- A smartphone or tablet running iOS (or above) or Android (or above).

Pairing Instructions

Download Govee Home App from App Store (IOS) or Google Play (Android).

Enable your smartphone's Bluetooth.

Open the app, tap the "+" icon in the top right corner and search for "H7065."

Tap the device icon and follow the on-screen instructions to complete pairing.



Specifications

Power Input (Adapter)	100-240VAC 50/60Hz
Power Input (Path lights)	24VDC 1A
Length	25.6ft/7.8m (Including power cable)
Light Color	RGBWW
Color Temperature	2200K-6500K
Luminous	500lm/per Spotlight
Waterproof	Adapter (IP44) Control Box (IP65) Spotlights (IP65)
Control Method	App, Control Box, Voice Control
Working Temperature	-10° to 45°C (4° to 113°F)

Troubleshooting

Cannot connect to Govee Home App.

- Make sure the device is powered on.
- Make sure your smartphone's Bluetooth has been enabled.
- Make sure your smartphone is connected to a 2.4GHz WiFi network.
- Position your smartphone close to the control box, then try connecting again.

One or more LED Spotlights fail to light up.

- Remove the light and then reattach it to the power cable. Also unplug the power adapter and then plug back into power.
- If the problem persists, please contact Govee Customer Service.

Customer Service

Warranty: 12-Month Limited Warranty

Support: Lifetime Technical Support

Email: support@govee.com

Official Website: www.govee.com

@Govee @govee_official @govee.official
@Goveeofficial @Govee.smarthome

FCC and ISED Canada Statement

This device complies with Part 15 of the FCC Rules and Industry Canada licence-exempt RSS standard(s). Operation is subject to the following two conditions:

- (1) This device may not cause harmful interference, and
- (2) This device must accept any interference received, including interference that may cause undesired operation.

Warning: Changes or modifications not expressly approved by the party responsible for compliance could void the user's authority to operate the equipment.

Le présent appareil est conforme aux CNR d'Industrie Canada applicables aux appareils radio exempts de licence. L'exploitation est autorisée aux deux conditions suivantes :

- (1) L'appareil ne doit pas produire de brouillage, et
- (2) l'utilisateur de l'appareil doit accepter tout brouillage radioélectrique subi, même si le brouillage est susceptible d'en compromettre le fonctionnement.

NOTE: This equipment has been tested and found to comply with the limits for a Class B digital device, pursuant to Part 15 of the FCC Rules.

These limits are designed to provide reasonable protection against harmful interference in a residential installation. This equipment generates uses and can radiate radio frequency energy and, if not installed and used in accordance with the instructions, may cause harmful interference to radio communications. However, there is no guarantee that interference will not occur in a particular installation. If this equipment does cause harmful interference to radio or television reception, which can be determined by turning the equipment off and on, the user is encouraged to try to correct the interference by one or more of the following measures:

1. Reorient or relocate the receiving antenna.
2. Increase the separation between the equipment and receiver.
3. Connect the equipment into an outlet on a circuit different from that to which the receiver is connected.
4. Consult the dealer or an experienced radio/TV technician for help.

FCC and IC Radiation Exposure Statement

This equipment complies with FCC and IC radiation exposure limits set forth for an uncontrolled environment. This equipment should be installed and operated with minimum distance 20cm between the radiator & your body.

La distance entre l'utilisation et l'appareil ne doit pas être inférieure à 20 cm. This device uses a non-replaceable light source. When the light source reaches the end of its life cycle, this device should be replaced. Not intended for illumination. Only used for creating ambiance.

1. Do not connect the rope light to the supply while it is in the packing or wound onto a reel;
2. Do not use the rope light when covered or recessed into a surface;
3. Do not open or cut the rope light;

This Class B digital apparatus complies with Canadian ICES-005. Cet appareil numérique de la classe B est conforme à la norme NMB-005 du Canada.

Responsible party :

Name: GOVEE MOMENTS(US) TRADING LIMITED
Address: 2501 Chatham Rd Suite R Springfield IL 62704
Email: support@govee.com
Contact information: https://www.govee.com/support

The Bluetooth® word mark and logos are registered trademarks owned by Bluetooth SIG, Inc. and any use of such marks by Shenzhen Qianyan Technology LTD. is under license.

The trademark Govee has been authorised to Shenzhen Qianyan Technology LTD. Copyright ©2021 Shenzhen Qianyan Technology LTD. All Rights Reserved.

This Class B digital apparatus complies with Canadian ICES-005. Cet appareil numérique de la classe B est conforme à la norme NMB-005 du Canada.



User Manual

Model: H7065
Govee RGBIC Spotlights