

TERAFLEX

PRODUCT INSTALLATION GUIDE

TeraFlex, Inc.
5241 South Commerce Dr.
Murray, Utah 84107
Phone/801.288.2585
Fax/801.713.2313
www.teraflex.biz

Rev. 24, February 2011 TT

JK S/T Swaybar System

Part # 1753710

Part # 1753715



Important Notes:

Prior to beginning this or any installation read these instructions to familiarize yourself with the required steps and evaluate if you are experienced and capable to personally perform these modifications.

Refer to the parts list to ensure that all necessary components and hardware has been included. If any parts are missing please contact your local retailer for assistance.

Tools needed:

- Set of metric sockets
- Set of standard sockets
- Set of standard wrenches
- Set of metric wrenches
- 3/8" drive ratchet
- Dead blow hammer
- Thread locker- Blue
- Cut off wheel or equivalent
- 3/16" allen
- Tape
- 7/8" open end wrench
- 1 1/2" open end wrench
- Marker, paint pen or scribe tool
- Square
- Grinder
- Tape measure

Kit Contents

ite Forged S/T : JK SingelRate Forged S/T Swaybar Kit

Item ID	Item Name	Quantity
1755010 JK Front Single Rate Swaybar		
75	Bolt 1/4"-20 x 3/4"	1
104	Nut 3/8"-24 Flange	4
123	Lock Washer 3/8"	4
1001	Bolt 3/8"-24 UNF x 3/4"	2
97514	Washer 3/8" Lock	2
600991	Bolt 3/8"-24 UNF x 1.5" GRADE 8	4
753300	Forged Swaybar: Arm w/ Extended Boss to mount Lockir	1
753302	Forged Swaybar: Small Arm	1
753304	Endcap	2
753306	Metal Composite Bushing	2
753309	Forged Swaybar: Spacer	1
753310	Forged Swaybar: Large Solid Torsion Bar	1
753317	Forged Swaybar: Arm	1
753320	Forged Swaybar: Knob	1
1756010 JK Swaybar Bushing Kit		
78	Washer 9/16" Lock	6
113	Bolt 9/16"-12 UNC x 1"	6
119	Nut 9/16"-12	4
753328	Forged Swaybar: Bushing	2
753901	Bracket JK Swaybar Left	1
753902	Bracket JK Swaybar Right	1
1756012 JK Link Kit		
24	Bolt 1/2"-13 UNC x 3"	2
35	Washer 1/2" Lock	2
134	Washer 7/16"	6
214	Nut 1/2"-13 UNC Stover	2
2391	Bolt 1/2"-20 UNF x 2.5"	2
97520	Nut 1/2"-20 UNF JAM Nut RIGHT HAND	2
97522	Nut 1/2"-20 UNF JAM Nut LEFT HAND	2
975126	Spacer Misalignment	8
9751211	4" Long 1/2"-20 sway bar link 0"-3"	2
97512	7.5" Long 1/2"-20 sway bar link 4"-6"	2
9751213	Rod End 1/2"-20 Left hand thread	2
9751214	Rod End 1/2"-20 Right hand thread	2

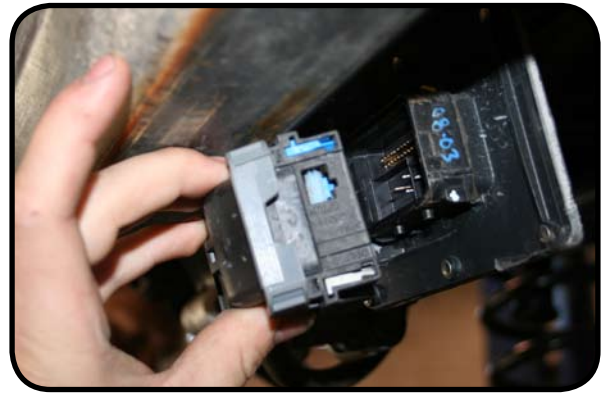
1. Remove front bumper using an 18mm socket, or a 3/4" socket if you have a teraflex bumper.



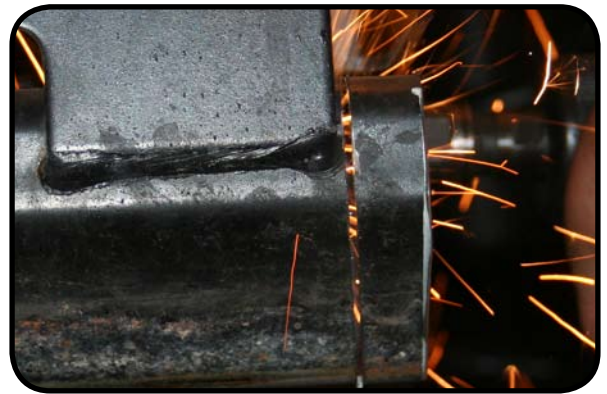
2. Remove sway bar links at the axle using 18 mm socket (if using quick disconnects just slide them off the mount pin)



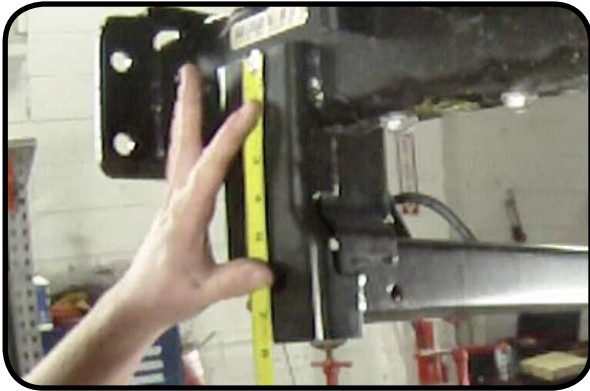
3. Remove the bolts from the sway bar mount using a 16mm socket. Make sure the sway bar is supported while removing the bolts from frame. (If Rubicon, disconnect the wire harness at the sway bar prior to removing mounting bolts)



4. Cut the front cross member piece flush with the inner part of the frame channel and grind straight. If JK is 2009 or 2010 skip this step, cross member is already shortened from the factory.



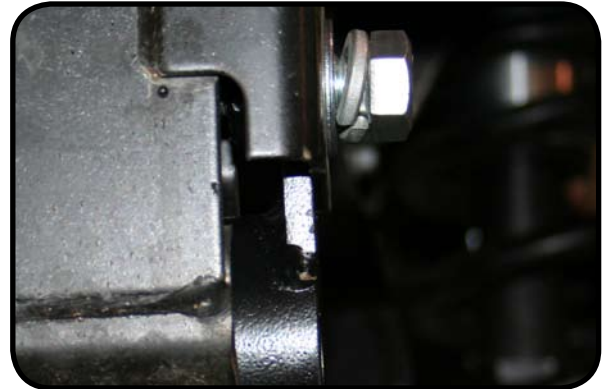
5. For 2011 measure 4 5/8" from the top of the cross member down. Use a square to scribe the line. Cut and remove the section the covers the cross member. Cut the welds and grind smooth.



6. Insert left and right brackets. The welded nut goes on the inside of the frame channel with the two inside holes aligning with the factory holes. Lower hole should be further forward than the top. (Note left and right brackets are different)



7. Install the 9/16" x 1 1/2" bolt into the outside welded nut using a flat washer and lock washer.



8. Install the two inside lower bolts using the supplied 9/16"x1/2" bolts and lock washers. Use an 7/8" open end wrench and tape, hold the nut on the wrench. Start the nut and **leave loose**.





9. Install the bushings into the mounts on the frame.



10. Grease the inside of the bushings and install the main shaft.



11. Tighten the bushing mount bolts. Use an alignment tool to keep the upper hole aligned. Then install the upper mount bolt and Torque bolts to 55 Ft-lbs.



12. Install the alignment spacer onto the drivers side of the shaft and leave loose.



13. Install the driver side sway bar arm onto the shaft.



14. Install the end cap so that the slot key engages with the torsion shaft and leave loose. Use blue thread locker to prevent the bolt from coming loose.



15. Install the locking arm on the shaft of the passenger side.



16. Install the passenger sway bar arm.



17. Install the end cap using 9/16" socket and blue thread locker. Make sure that the slot key engages with the torsion shaft. Torque both end caps to 20 Ft-lbs.



18. Install the locking knob into the arm using a 1 1/2" open wrench and blue thread locker.



19. Tighten the sway bar arm pinch bolts using a 9/16 socket and wrench. Torque to 50 Ft-lbs



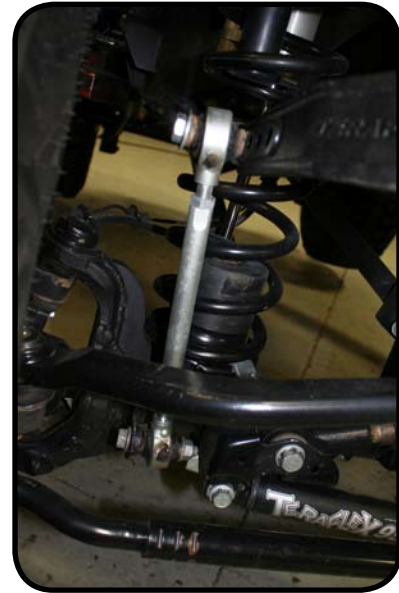
20. Tighten the alignment spacer bolt using 3/16" allen.



21. Install the top sway bar links on the outside of the sway bar arm using the supplied hardware and 3/4" socket or wrench. Torque to 75 Ft-lbs, use blue thread locker.



22. Install the bottom sway bar link at the inside of the axle tab using the factory hardware and torque to 75 Ft-lbs.



23. Adjustments need to be made to the sway bar links by rotating the threaded bar. Adjust one side so that the locking knob pin will engage into the locking arm. This is due to the un-level ride height of the JK due to the fuel tank.
24. Re-torque after 500 miles.



PRODUCT INFORMATION & WARRANTY

MAINTENANCE INFORMATION:

It is the buyer's responsibility to have all suspension, drivetrain, steering, and other components checked for proper tightness and torque after the first 100 miles and every 3000 miles after that.

NOTICE TO INSTALLER:

The enclosed "Warning to Driver" sticker must be installed in the vehicle in driver's view. This sticker is to act as a constant safety reminder when operating the vehicle. It is your responsibility as the equipment installer to install the provided sticker and to forward the product instructions to the vehicle's owner for review. If a "Warning to Driver" sticker or product installation guide were not included in the kit, FREE replacement stickers and instructions are available by request. It is the installer's duty to ensure a safe and controllable vehicle after the modifications have been performed.

WARNING:

Neither the seller nor the manufacturer will be liable for any loss, damage, or injury directly or indirectly arising from the use of or inability to determine the use of these products. Before using, the user shall determine the suitability of the products for its intended use, and the user shall assume all responsibility and risk in connection therewith.

WARNING TO DRIVER:

This vehicle has been modified to enhance off road performance and has unique handling characteristics. Use in harsh environments can cause extreme stress on the components. Vehicle should be inspected after being off road to make sure that all the components are in working order and safe to travel on the highway. All fasteners should be checked so that they are at the correct torque specifications as the vibration and stresses from off roading may cause critical fasteners to work loose. Extra care should be taken to inspect the critical components, steering, and brake systems. During each oil change components such as arms, tie rod ends, etc should be greased and checked for excessive wear. Any worn components should be replaced. When returning to the pavement always set or restore tire air pressure to the factory recommendation and connect or engage any disabled sway bar mechanisms. Because of the higher center of gravity and larger tires, this vehicle handles and reacts differently than many passenger cars, both on and off road. You must drive it safely! Extreme care should be taken to prevent vehicle rollover or loss of control, which can result in serious injury or death. Avoid sudden sharp turns or abrupt maneuvers. Generally, braking performance and capabilities are decreased when significantly larger/heavier tires are used, especially when used in combination with transfer case low-range reduction kits. Take this into consideration while driving. Do not add, alter or fabricate any factory or aftermarket parts to increase vehicle height over the intended height of the TeraFlex product purchased. Mixing component brand is not recommended. TeraFlex Inc. will not be responsible for any altered product or any improper installation or use of our products. We will be happy to answer any questions concerning the design, function, and correct use of our products. It is ultimately the buyer's responsibility to have all bolts/nuts checked for tightness after the first 100 miles and then every 3000 miles. Wheel alignment, steering system, suspension and drive line systems must be inspected by a qualified professional mechanic at least every 3000 miles.

TERAFLEX PRODUCT WARRANTY:

Tera Manufacturing warrants TeraFlex Suspension products to the original retail purchaser to be free of defects in material and workmanship for as long as the original purchaser owns the vehicle on which products were originally installed.

Failure to complete regular maintenance (grease every 3000 miles) on TeraFlex FlexArms will void this warranty. All other conditions of the standard TeraFlex product warranty apply.

All TeraLow products are covered by TeraFlex's two (2) year warranty to be free of defects in material and workmanship for two years from date purchased.

Tera axles are covered by a 12-month warranty to be free of defects in materials and workmanship.

This warranty does not cover or include product finish, improperly installed or applied products, improperly maintained products, products or components used for racing or competition or damage due to abuse or neglect, products that fail due to the use of larger tire and wheel combinations.

All returns must be accompanied by an original invoice. It is the customer's responsibility to remove the product from the vehicle. Shipping charges are the responsibility of the customer. Tera Manufacturing will pay the return freight if the product meets the terms of warranty.

This warranty is for the replacement or repair of defective TeraFlex products only and does not include freight charges, labor charges for removal of or installation of TeraFlex or related products or components, costs incurred due to down time of the vehicle, or lost profits due to vehicle down time.

A returned goods authorization number (RGA#) must accompany any returned products. For more information please contact a TeraFlex customer service representative.

COPYRIGHT

©Copyright 2008. All rights reserved, TeraFlex Inc. Reproduction of this catalog and/or any of its contents without written permission is strictly prohibited.

TeraFlex® is a registered trademark of TeraFlex Inc. All trade names and logos including but not limited to TeraFlex, FlexArms, RockGuard, Monster, and LCG are protected by law and duplication of trade names and/or logos are strictly prohibited.

TeraFlex Inc. reserves the right to update, discontinue, redesign, modify finish, part number or component build parts if deemed necessary without written notice. TeraFlex Inc., and any associated dealers are not responsible for misprints or typographical errors that may have inadvertently been made within this instruction sheet.

Jeep® and the Jeep® grill are registered trademarks of Chrysler LLC, and have no affiliation with TeraFlex Inc.

TeraFlex, Inc. 5241 South Commerce Dr. Murray, Utah 84107
Phone/801.288.2585 Fax/801.713.2313 www.teraflex.biz