



PPM-8056/PPM-8090 JK REAR TRACK BAR RELOCATION BRACKET

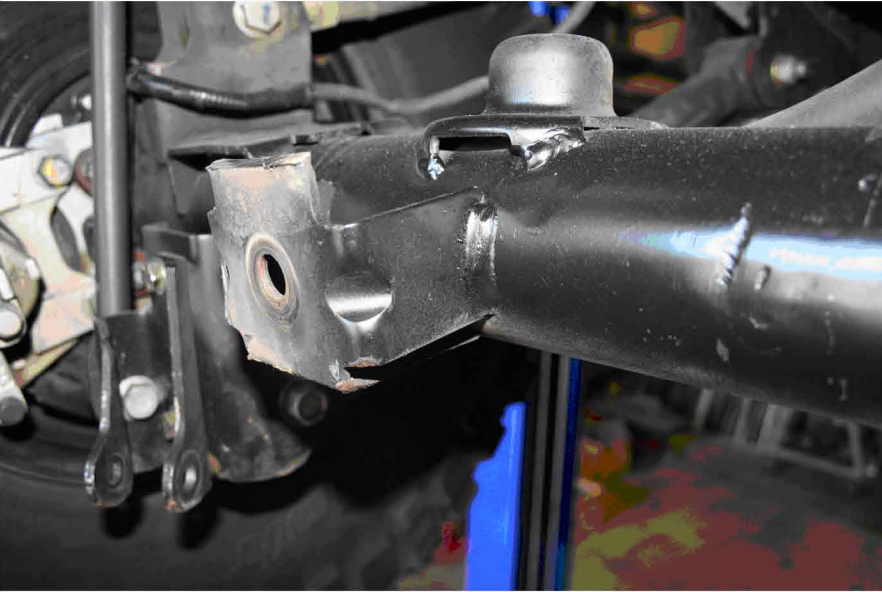
GENERAL NOTES

- These instructions are also available on our website; www.synergysuspension.com. Check the website before you begin for any updated instructions and additional photos for your reference.
- The installation of this bracket requires cutting part of the factory track bracket off.
- You must use a minimum of 3" of rear bump stop extension, PPM-8058 (3") or PPM-8076 (4") to prevent the track bar from contacting the exhaust at full jounce travel.

1. Remove the factory rear track bar from the axle bracket and loosen the track bar from the frame bracket to allow the track bar to rotate out of the way. Secure the track bar up and out of the way with a bungee cord or something similar.

2. Cut part of the factory track bar off as shown in the following pictures. The pictures show using a 4 ½" grinder with a cut off wheel but a sawzall can also be used.





3. Attach the new track bar relocation bracket to the factory bracket as shown with the new 9/16" bolt and lock nut, use a flat washer under the bolt head and lock nut.

4. Install the u-bolts over the axle tube and through the track bar relocation bracket, use a flat washer and nylock nut to secure the u-bolt.
5. Torque the 9/16 bolt to 150 ft-lbs, and the 3/8" u-bolts to 40 ft-lbs.
6. Attach the track bar to the new track bar relocation bracket using the factory nut and bolt. It helps to have someone push the back of vehicle from side to side to align the track bar bushing to the hole in the bracket. Tighten the track bar bolt to 125 ft-lbs.



Note:

PPM-8056 - JK Rear Track Bar Relocation Bracket

PPM-8090 - JK Rear Track Bar Relocation Bracket w/ Cam Bolt Adjustment