



SYNERGY MFG. 870 INDUSTRIAL WAY, SAN LUIS OBISPO, CA (805) 242-0397

## 5018 – JEEP JK 2012+ BRAKE PUMP RELOCATION BRKT

### **GENERAL NOTES:**

- These instructions are also available on our website; [www.synergymfg.com](http://www.synergymfg.com). Check the website before you begin for any updated instructions and additional photos for your reference.
- Note, this product can be installed in a variety of locations. This install covers one location which works well when used in conjunction with a Synergy front bumper.

### **PARTS LIST:**

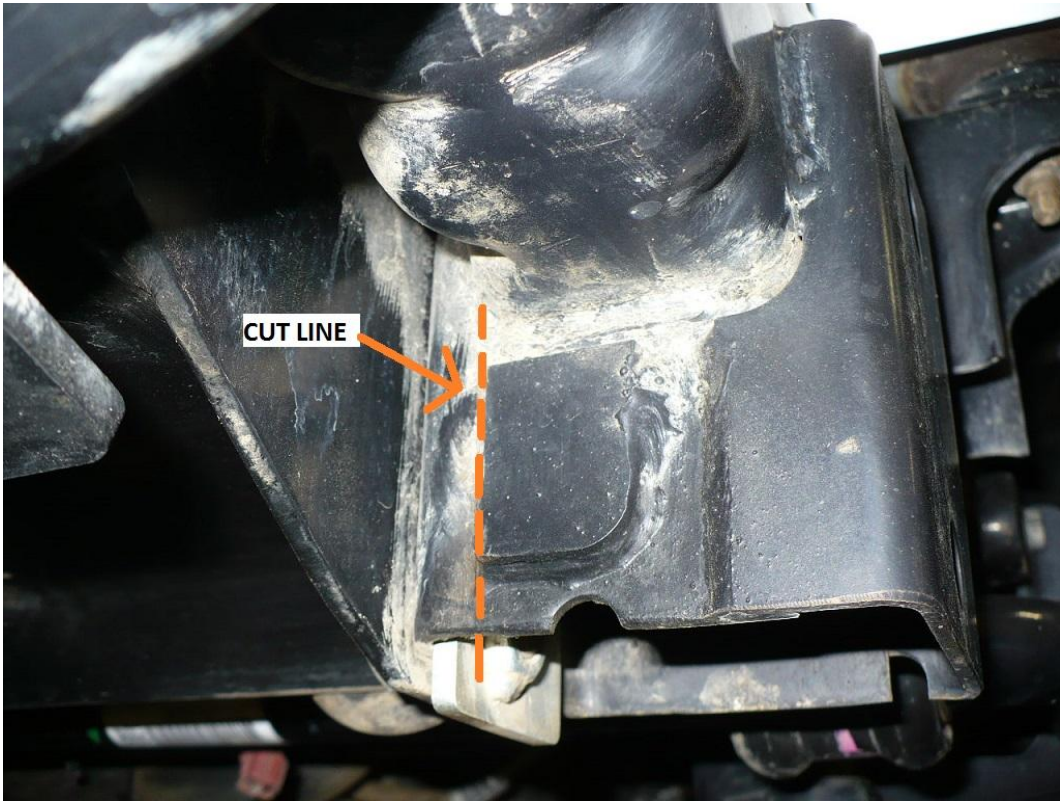
- (1) 501801-01 Brake Pump Relocation Bracket
- (2) 3/8-16 Hex head thread cutting screws
- (2) M6 flat washers
- (2) M6-1.00 x 25 mm bolts

### **Parts / Tools Needed to complete installation:**

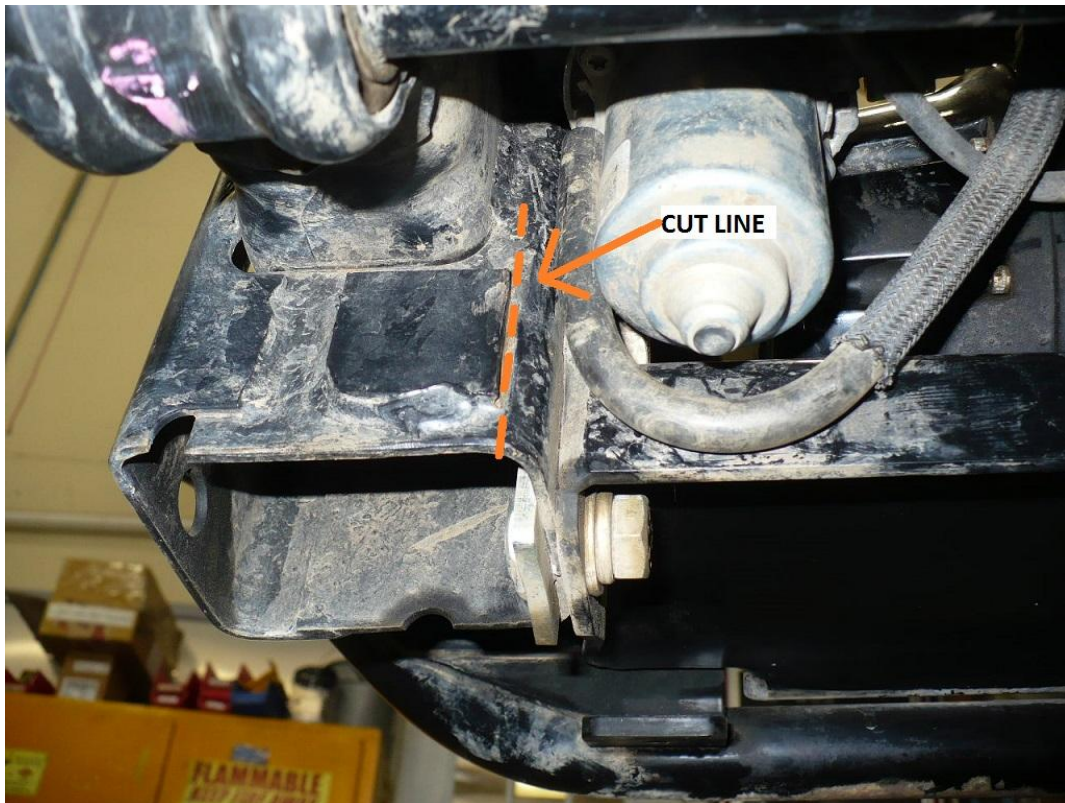
- Basic simple hand tools.
- Drill with 5/16" metal cutting bit.
- 4-1/2" angle grinder with cut off wheel or similar cutting tool.

### **INSTALLATION:**

- 1) Begin by unbolting the brake pump from the factory mount. Use a 10mm socket or wrench. **\*\*Save the factory nuts as they will be re-used.\*\***
- 2) With pump removed from mount, cut off the factory mount. This can be done in 2 simple cuts using a 4-1/2" angle grinder and cut off wheel or similar metal cutting tool. Cut lines shown in IMG 2.1 & 2.2 below.



IMG 2.1



IMG 2.2

3) The factory bracket removed should appear as pictured below.



- 4) Next, determine a suitable mounting location for the 5018 relocation bracket. This bracket can be installed in a variety of areas to best suit different manufacturer's bumpers. In this installation, we are going to remount in the same approximate area as factory to allow our bumper and winch adequate clearance.
- 5) With a suitable location determined, mark holes for mounting, and drill using a 5/16" drill bit. With holes drilled, secure to frame / chassis with the supplied 3/8" self tapping screws.
- 6) Bolt the brake pump to the bracket using the supplied M6-1.00 x 25 mm bolts. Use a washer under the head of the bolt and re-use the factory flange nuts to secure.



Installation is Complete