



PART NUMBER-**JK-FB-M-ASMO**

PART DESCRIPTION: **JK MODULAR  
FRONT BAR**

SUITED VEHICLES: **CHYRSLER JEEP JK  
WRANGLER 2007 ON**

## ***MODULAR BULL BAR- JK***

### ***Attention!!!***

- When installed in accordance with these instructions, the front protection bar does not affect operation of the SRS airbag.
- This product must be installed exactly as per these instructions using only hardware supplied
- In the event of damage to any bull bar component, contact Double Black Offroad for options. Repairs or modifications to the impact absorption system must not be attempted.
- Do not use this product for any vehicle make or model, other than specified on these instructions.
- Do not remove labels from this product.
- This product or its fixings must not be modified in any way.
- The installation of this product is recommended by trained personnel.
- These instructions are correct as at the publication date. Double Black Offroad cannot be held responsible for the impact of any changes subsequently made by the vehicle manufacturer.
- During installation, it is the duty of the installer to check correct operation/ clearances of all components
- Supplied recovery hooks are designated offroad only. Do not drive around urban areas with these hooks as they are dangerous to pedestrians.
- Installation time is estimated at 2.5 hours



## TORQUE SETTINGS FOR FASTENERS

SIZE	TORQUE (Nm)	TORQUE (lb ft)
M6	9	4
M8	22	16
M10	44	32
M12	77	57

## BOLT KIT CONTENTS

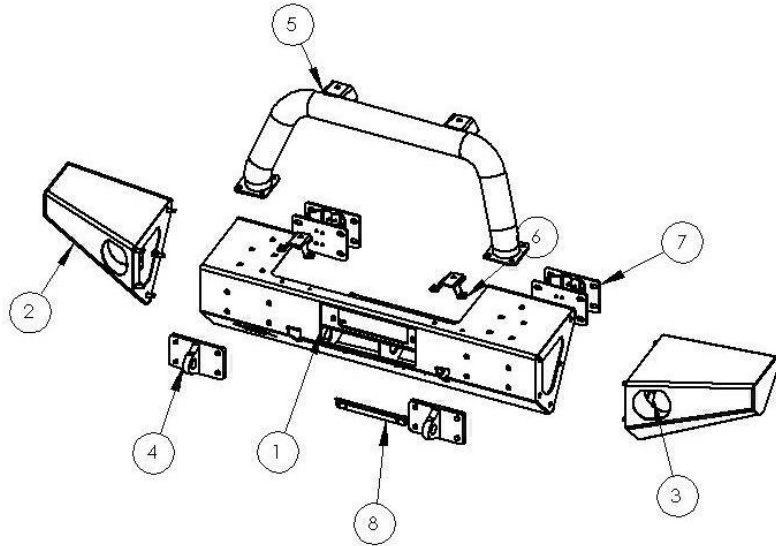
BOLTS	QTY
• M12 x 40 button head cap screws Grd 10.9	8
• M12 x 40 Hex head bolts Grd 8.8	8
• M12 washers	24
• M12 nyloc nuts	16
• M10 nuts	10
• M10 washers	10
• M10 spring washers	10
• M8 x30 button head caps screws z/p	10
• M8 washers	12
• M8 nyloc nuts	12
• M6 x12 pan head screws z/p	4
• M6 nyloc nuts	4
• M4x 16 pan head screws z/p	8

### Fitting Instructions:

Tools required:	Allen Keys Hand Spanners and or Socket set Phillips head screw driver
-----------------	---

### Contents

Item No.	Part Number	Part Description	Qty
1	JK-FB-M-ASM1	CENTRE CRADEL	1
2	JK-FB-M-ASM2R	PLATE WING RH	1
3	JK-FB-M-ASM2	PLATE WING LH	1
4	JG-TH-ASM	TOW HOOK	2
5	JK-FB-M-ASM3	TOP HOOP LEAN BACK	1
6	JK-FB-M-11	SPOT LIGHT MOUNT	2
7	JG-CC-ASM1	CRUSH CAN	2
8	JK-FB-M-15	NUMBER PLATE BRKT JK FRONT BAR MODULAR BOLT KIT	1
9	JK-FB-M-BK		1



### Step 1:

Remove original plastic bumper and all hardware behind as per your factory service manual.

Unplug your fog lights loom and leave wires hanging as these will be reused later.

Remove your fog lights from the plastic bumper.



### Step 2:

The picture to the right shows what your car will look like with the factory bumper and hardware removed.



### Step 3:

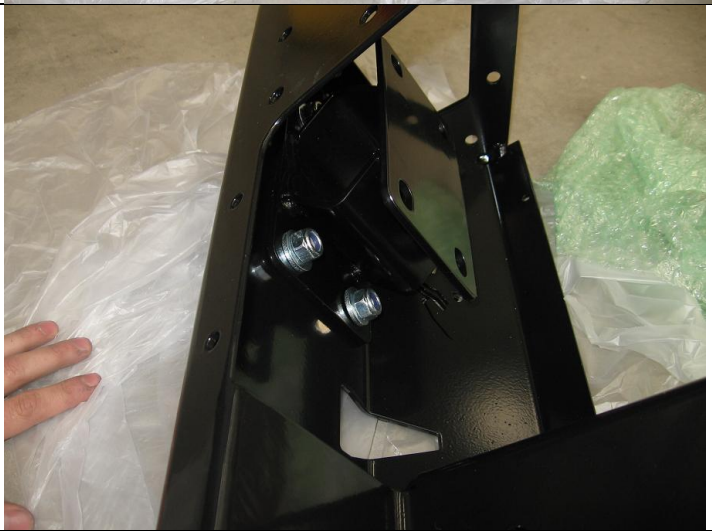
Unpack your DBOR bull bar



Step 4.

Fit M12 button head cap screws through the front of the bar. If you wish to install the offroad recovery hooks, insert these bolts through the tow hook, then through the bull bar, then through your crush can. Use M12 washer and M12 nyloc nut on the inside as show to the right.

Repeat until all 8 bolts are fitted. Torque up each bolt



Step 5:

Fit a wing to the centre cradle by simply offering the wing up to centre cradle and putting an M10 washer, spring washer and nut on each bolt which is welded to the wing.

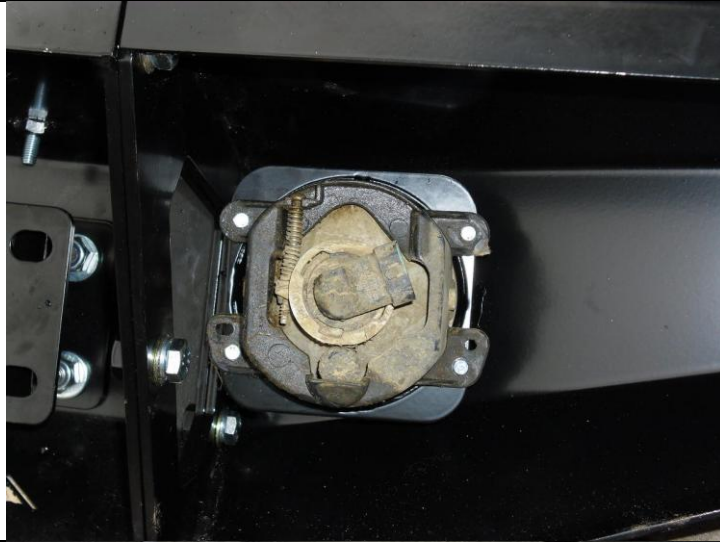
Line up the edges of the wing to the centre cradle and torque up the bolts.

Repeat for other wing.  
 Wings can be fitted after centre cradle.



Step 6:

Line up your stock fog lights with the mounting holes in the wings and secure with M4 pan head screws



Step 7:

Your spot light mounts can be fitted at any time or left off all together if you are not running auxiliary lights.

To fit use M8 button head cap screws with nyloc nuts and washers underneath.



Step 8:

Fit top hoop with M8 button head cap screws using an Allen key. The bar leans back towards your jeep. The bar comes with weld nuts already inserted so just line up the holes and tighten the bolts

( hex bolts shown in photo to the right are not supplied in your bolt kit, use m8 button head cap screws with washers)



**Step 9:**

This step requires the help of a friend.

Lift bar up to your jeep with your friend and insert M12 hex bolts with M12 washer pushed up to head through crush can then through jeep chassis then through M12 washer then into M12 nyloc nut.

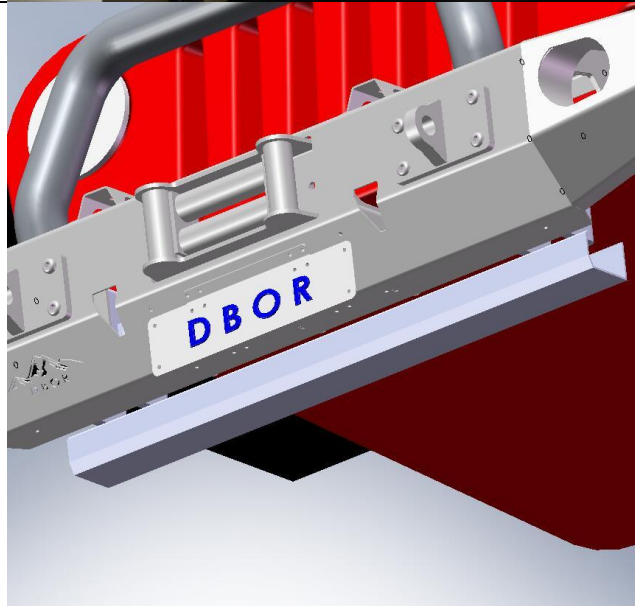
Centralise bar to your jeep.

Repeat until all 8 M12 hex bolts are in and torque up each bolt.



**Step 10:**

Fit number plate bracket with M6 pan head screws and nyloc nuts through centre cradle. Fit your number plate to number plate bracket with M6 pan head screws and nyloc nuts



**Step 11:**

The picture to the right shows a finished bar.

Don't forget to reconnect your fog lights loom.



**Step 12:**

Your DBOR bar has been designed to suit a roller fair lead for your winch; however a hawse fair lead will still fit.

When fitting a winch first fit the fairlead by inserting bolts (supplied with your winch) through the inside of the bar and nuts and spring washer on the outside. Torque up the bolts.

Next place the winch on the bar's cradle and insert the 4 bolts from underneath and torque up.



**Step 13:**

The picture to the right shows a DBOR bar with the wings removed. This allows fitment of tyres + 37".

Your bar is not road legal with the wings removed so only take them off when you reach your offroad destination.



**Step 14:**

Some winches have extended motor housings which could come into contact with a folded edge of sheet metal on your wrangler.

If this is the case you may need to trim the section shown to the right with an angle grinder.

Most winches will not require this trimming operation.





Step 15:

Now go out and enjoy your new bar with confidence!!!



**DOUBLE BLACK OFF-ROAD PTY. LTD.**

17 of 150 Chesterville rd Moorabbin 3189

PHONE: +6195530744

EMAIL: [sales@doubleblackoffroad.com](mailto:sales@doubleblackoffroad.com)