



Installation Instructions:

SRC Bumper (Part # SB76614)

2007-2015 Jeep JK Generation 2 SRC Rear Bumper

SRC Bumper (Part # SB76858)

2007-2015 Jeep JK Generation 2 XRC Rear Bumper

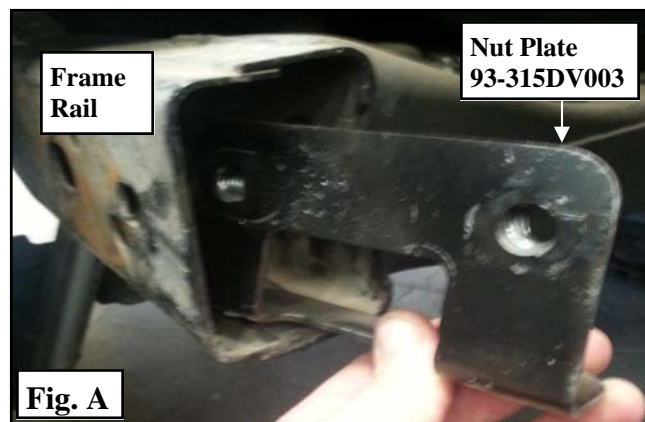
SB76614 Parts Included	Qty
93-313AR001 GEN 2 SRC REAR BUMPER	1
93-315DV002 NUT PLATE: CENTER FRAME	2
90-9540 NUT PLATE: PASS FRAME	2
93-315DV003 NUT PLATE: DRVR FRAME	1
93-315BH013 PIVOT MOUNT NUT PLATE	1
90-313BH001R TOP PLATE: DRVR	1
90-315BH001Y TOP PLATE: PASS	1
1/2"-13 X 4" GR. 8 HEX BOLT	4
1/2"-13 X 1 3/4" GR. 8 HEX BOLT	3
1/2"-13 X 1 1/2" GR. 8 HEX BOLT	2
1/2"-13 X 1 1/4" GR. 8 HEX BOLT	2
1/2" SAE FLAT WASHER	10
1/2" I.D. X 1 1/8" O.D. WASHER	1
5/16"-18 X 1" GR. 8 HEX BOLT	24

SB76858 Parts Included	Qty
93-315DV001 GEN 2 XRC REAR BUMPER	1
93-315DV002 NUT PLATE: CENTER FRAME	2
90-9540 NUT PLATE: PASS FRAME	2
93-315DV003 NUT PLATE: DRVR FRAME	1
93-315BH013 PIVOT MOUNT NUT PLATE	1
90-313BH001R TOP PLATE: DRVR	1
90-315BH001Y TOP PLATE: PASS	1
1/2"-13 X 4" GR. 8 HEX BOLT	4
1/2"-13 X 1 3/4" GR. 8 HEX BOLT	3
1/2"-13 X 1 1/2" GR. 8 HEX BOLT	2
1/2"-13 X 1 1/4" GR. 8 HEX BOLT	2
1/2" SAE FLAT WASHER	10
1/2" I.D. X 1 1/8" O.D. WASHER	1
5/16"-18 X 1" GR. 8 HEX BOLT	24

Installation Instructions:

Step 1: Remove the factory rear bumper and hardware from the vehicle.

Step 2: On the driver side, slide nut plate (93-315DV003) into the inside of the rear frame rail. (Fig A)



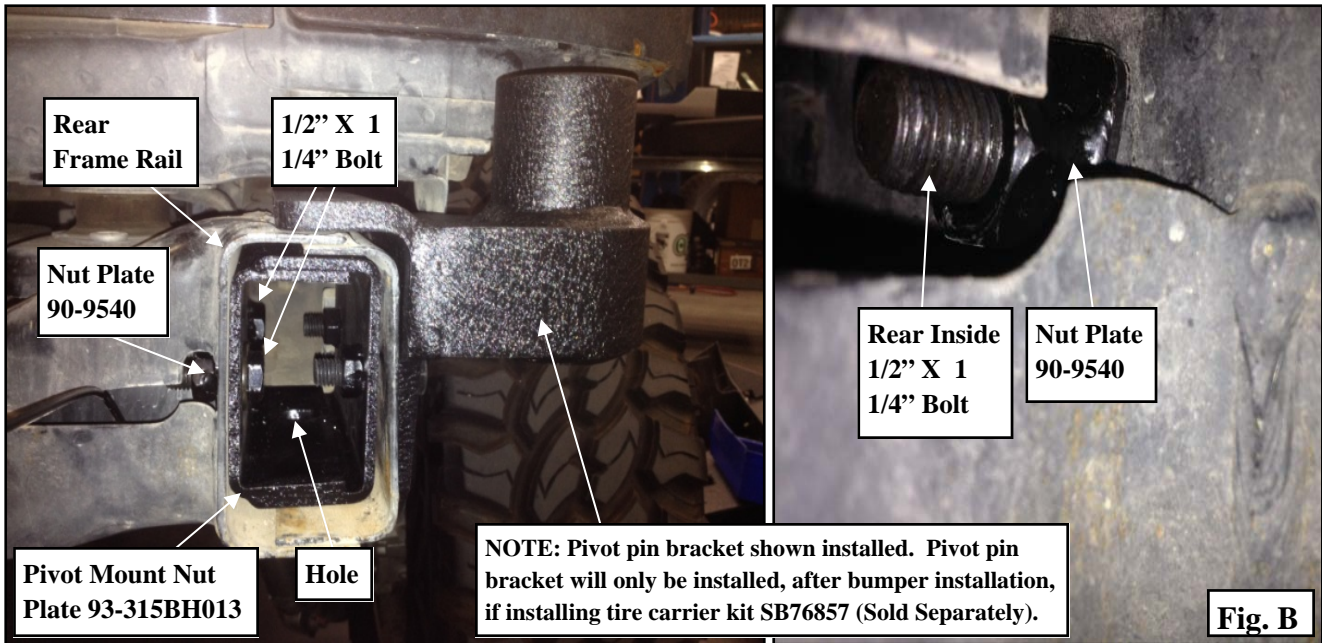
Step 3: On the passenger side, install the pivot mount nut plate (93-315BH013), with the hole on the bottom, into the passenger side frame rail so the (2) inner and outer slots hole in the frame line up with the corresponding holes in the pivot mount nut plate. (Fig. B)

For Technical Support/Warranty Information please call 310-762-9944



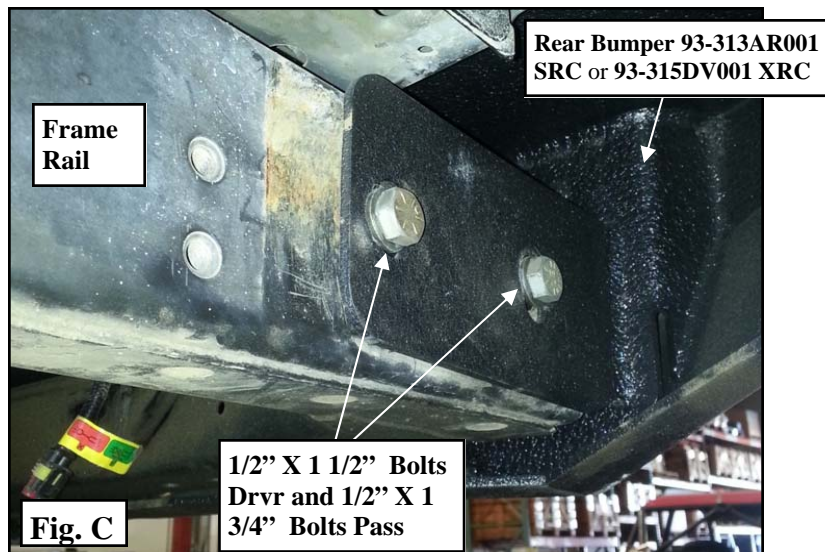
Installation Instructions:

*SRC Bumper (Part # SB76614)
2007-2015 Jeep JK Generation 2 SRC Rear Bumper
SRC Bumper (Part # SB76858
2007-2015 Jeep JK Generation 2 XRC Rear Bumper*



Step 4: Insert the (1) supplied 1/2" X 1 1/4" bolt and 1/2" X 1 1/8" flat washer (98029A033) (from the outside) into the front inside frame mounting hole. Insert the (1) supplied 1/2" X 1 1/4" bolt and washer (from the inside) into the rear inside frame mounting hole and secure using (1) nut plate (90-9540). Leave bolts loose at this time. (Fig. B)

Step 5: *NOTE: This step might require 2 people.* Carefully raise the rear bumper (93-313AR001 SRC or 93-315DV001 XRC) against the outer frame rails. Secure to the outer frame rails and previously installed nut plates (93-315DV003 **drv**r and 93-315BH013 **pass**) using the (2) supplied 1/2" X 1 1/4" bolts and washers on the driver side and the (2) supplied 1/2" X 1 3/4" bolts and washers on the passenger side. Leave the bolts loose at this time. (Fig C)



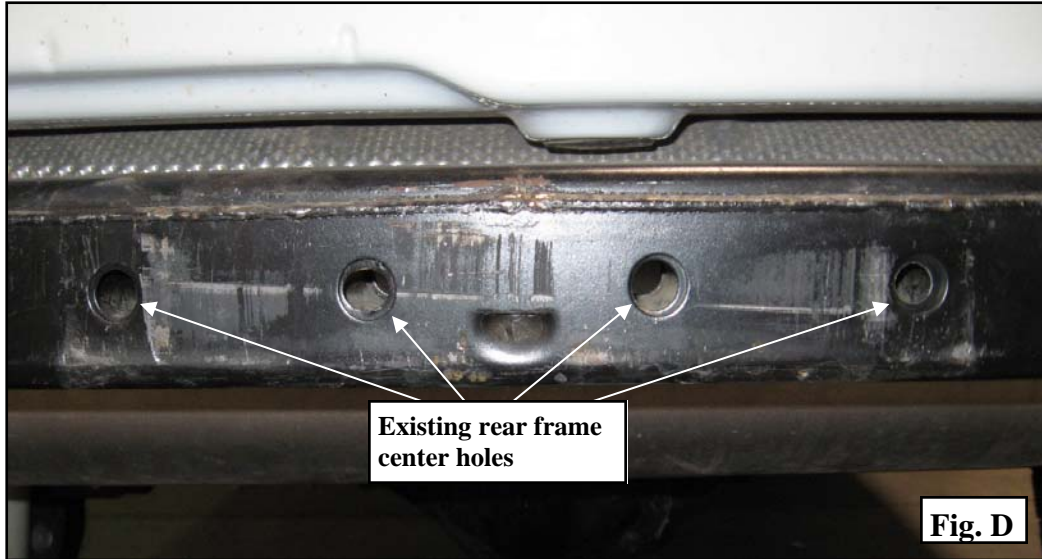
For Technical Support/Warranty Information please call 310-762-9944



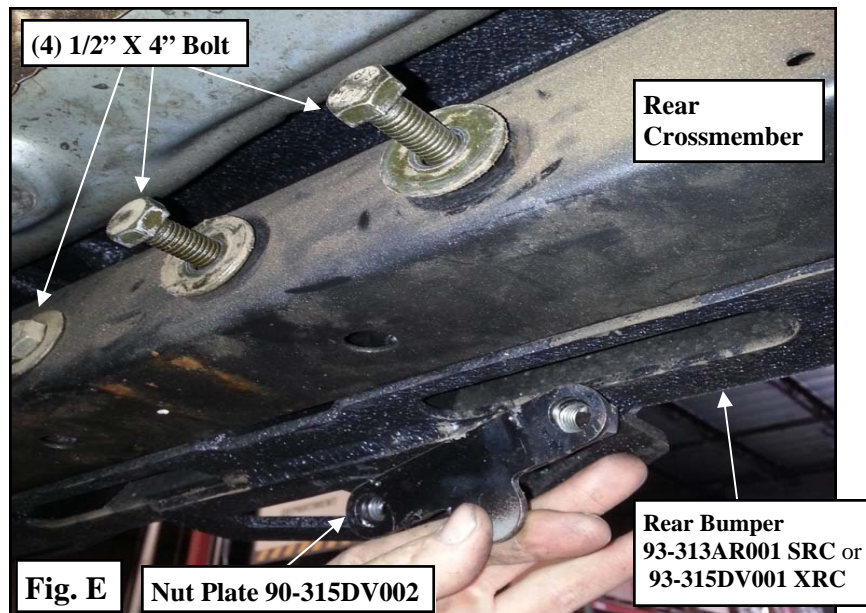
Installation Instructions:

*SRC Bumper (Part # SB76614)
2007-2015 Jeep JK Generation 2 SRC Rear Bumper
SRC Bumper (Part # SB76858
2007-2015 Jeep JK Generation 2 XRC Rear Bumper*

Step 6: Drill out the (4) holes in the center of the frame to 1/2". (Fig D)



Step 7: Insert the (2) nut plates (90-315DV002) into the center (4) holes in the rear bumper (93-313AR001 SRC or 93-315DV001 XRC). (Fig E)



Step 8: Secure the rear bumper (93-313AR001 SRC or 93-315DV001 XRC) to the rear frame crossmember using the (4) supplied 1/2" X 4" bolts, washers and previously installed (2) nut plates (90-315DV002). Level the rear bumper and torque the 1/2" bolts to 90 ft./lbs. (Fig E)

For Technical Support/Warranty Information please call 310-762-9944



Installation Instructions:

*SRC Bumper (Part # SB76614)
 2007-2015 Jeep JK Generation 2 SRC Rear Bumper
 SRC Bumper (Part # SB76858
 2007-2015 Jeep JK Generation 2 XRC Rear Bumper*

Step 9: Installation is now complete.

Use this only as a guide for hardware without a called out torque specification in the instruction manual.

Bolt Torque and ID							
Decimal System				Metric System			
All Torques in Ft. Lbs. Maximums							
Bolt Size	Grade 5	Grade 8	Bolt Size	Class 9.8	Class 10.9	Class 12.9	
5/16	15	20	M6	5	9	12	
3/8	30	45	M8	18	23	27	
7/16	45	60	M10	32	45	50	
1/2	65	90	M12	55	75	90	
9/16	95	130	M14	85	120	145	
5/8	135	175	M16	130	165	210	
3/4	185	280	M18	170	240	290	

<p>1/2-13x1.75 HHCS</p> <p>D T L X</p> <p>Grade 5 Grade 8 (No. of Marks + 2)</p>	<p>M12-1.25x50 HHCS</p> <p>D T L X</p> <p>P = Property Class (Bolt Strength) D - Nominal Diameter (Millimeters) T = Thread Pitch (Thread Width, mm) L = Length (Millimeters) X = Description (Hex Head Cap Screw)</p>

For Technical Support/Warranty Information please call 310-762-9944



Installation Instructions:

SRC Bumper (Part # SB76614)

2007-2015 Jeep JK Generation 2 SRC Rear Bumper

SRC Bumper (Part # SB76858)

2007-2015 Jeep JK Generation 2 XRC Rear Bumper

Product cleaning and maintenance instructions

Stainless Steel Finish – Aluminum polish may be used to polish small scratches and scuffs on the finish. Mild soap, window or glass cleaner may be used to clean the finish. **Dual state powder coat finish** – Mild soap, window or glass cleaner may be used to clean the finish. In order to protect the finish, you may wax your product on a regular basis with pure carnauba automotive wax. Do not use any types of soap, polish or wax that contains abrasive that could damage the finish. **Textured coated finishes** should be cleaned with a mild soap on a damp sponge. Do not apply polish or wax that requires to be removed by means of buffing. This type of wax is commonly used at car wash facilities. **Chrome Finish** – Mild soap, window or glass cleaner may be used to clean the finish. In order to protect the finish you should wax your product on a regular basis with pure carnauba automotive wax. Do not use any types of soap, polish or wax that contains abrasive that could damage the finish.

For Technical Support/Warranty Information please call 310-762-9944



Installation Instructions:

SRC Bumper (Part # SB76614)

2007-2015 Jeep JK Generation 2 SRC Rear Bumper

SRC Bumper (Part # SB76858)

2007-2015 Jeep JK Generation 2 XRC Rear Bumper

Limited Warranties

Smittybilt's products are covered under the following limited warranties only. Note that the duration of the limited warranty differs according to the material and finish of the product purchased. Subject to the duration and conditions of the limited warranty stated below, Smittybilt warrants to the original retail purchaser that its products are free from defects in material and workmanship. All other warranties and representations express or implied, are hereby disclaimed, including fitness for merchantability and buyer's intended use or purpose. All parts are sold "AS IS" except for the limited warranties granted herein. Buyer assumes all risks as to the selection, suitability and performance of all goods and products selected. This limited warranty does not cover damage or impairment in any part due to misuse, improper installation, accident or contact with on-road or off-road hazards, product modification, improper or inadequate cleaning and/or maintenance. Smittybilt is not responsible for items damaged during shipping. This warranty is not transferable from the original buyer. For the original Buyer to be eligible for the limited warranty coverage, the Buyer must provide proof of purchase. Smittybilt strongly recommends returning the warranty registration card.

Customer's remedy hereunder shall be limited only to repair or replacement (at Smittybilt's option) of any defective part(s) returned to Smittybilt at customer's expense. The determination of whether or not a returned part is defective or subject to coverage under the limited warranties stated herein shall be made at Smittybilt's sole discretion.

To assure product quality, Smittybilt reserves the right to change product design, material, specification and finishes without prior notice to customers. This limited warranty gives you specific legal rights and you may also have other rights, which may vary from state to state. Some states do not allow limitations on how long an implied warranty lasts, so the above limitations may not apply as to you. Also, some states do not allow the exclusion or limitation of incidental or consequential damages, so the above limitations or exclusions may not apply to you. Smittybilt reserves the right to discontinue product lines and substitute products, or provide other remedies than those listed in this limited warranty for those discontinued products.

Warning

Rollover and other types of vehicle accidents may result in serious injury or death to you, your passengers and others sharing the road. Smittybilt accessories are decorative and are not intended to reduce or avoid injury or damage in the event of an accident. The weight and location of Smittybilt accessories may affect your vehicles' handling, stability and performance, creating an increased risk of accident or rollover. Before installing any accessory, check state laws and assure that the accessory will not obscure any lights or interfere with proper operation on your vehicle's safety equipment. Consult your owner's manual and the Smittybilt instructions, or additional safety information. Smittybilt products, nor the warnings contained herein, are not a substitute for your safe driving. Don't drink and drive, always use seat belts and don't drive faster than conditions permit.

For Technical Support/Warranty Information please call 310-762-9944

Smittybilt, 400 W Artesia, Compton, CA 90220



WWW.SMITTYBILT.COM

Installation Instructions

Part # 612800-04
Light Kit for 76858 and 76614
Rear Bumpers

Read and follow wiring diagram carefully.

- Control Box must be used when wiring up lights
- Do not hook up lights directly to a 12v source (this will damage lights)
- Make sure all connections are secure
- Make sure wires do not contact sharp objects or extreme heat area

PARTS



NOTE: The wire is connected with the lamp when it leaves the factory.

- Please follow the wiring diagram to connect the circuit. According to the wiring diagram to connect the circuit, LED light will be open automatically when the engine is started.
- Please follow the ECE R97/28 and ECE R48 standard to install.

For Technical Support/Warranty Information please call 310-762-9944

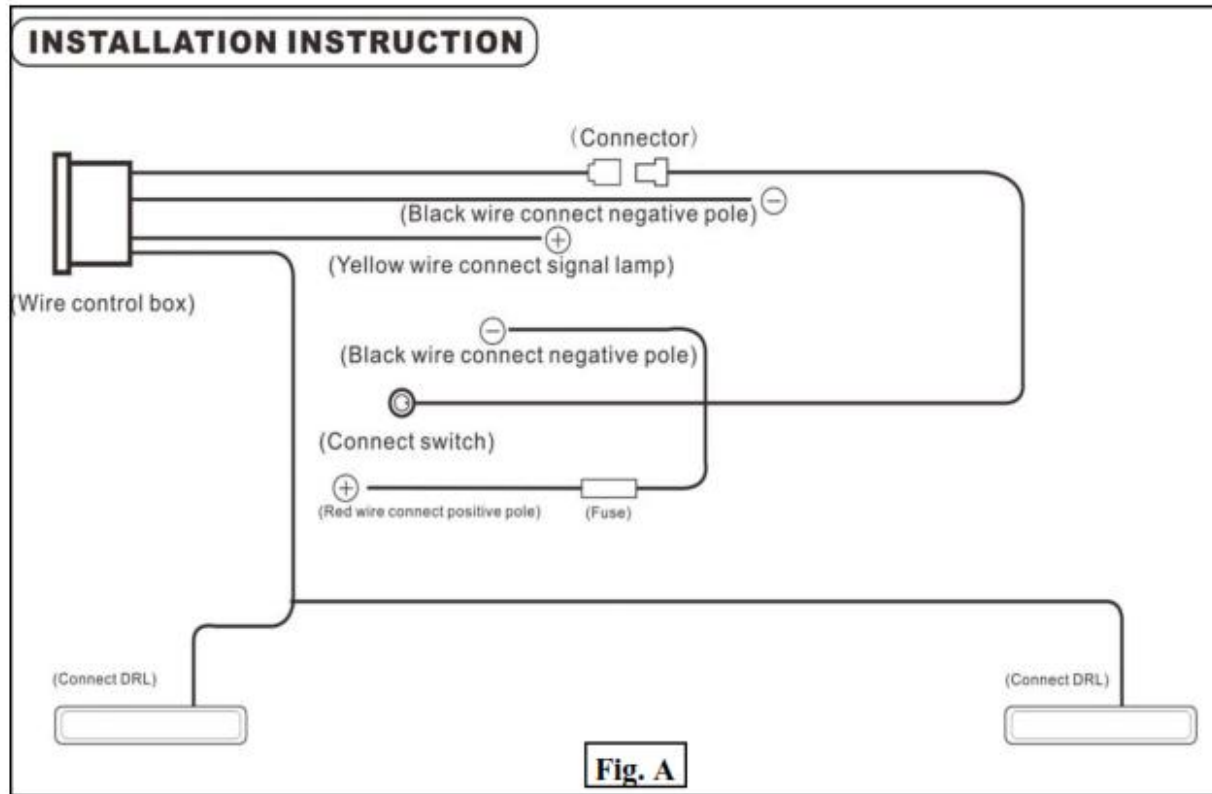
Smittybilt, 400 West Artesia Blvd, Compton, CA 90220



WWW.SMITTYBILT.COM

Installation Instructions

Part # 612800-04
Light Kit for 76858 and 76614
Rear Bumpers



There are 4 power wires; a minimum of 3 wires must be connected for the lights to function.

A. Red wire to + positive on battery or power source.

B. Black wires(2) to – ground (one Ground wire will be the short black wire coming out of the power control box, The other will be the long black wire on the main wire loom.)

OPTIONAL: Yellow wire to + of backup light or other + switched accessory power wire. Only use yellow if you want an auxiliary on/off switch such as a reverse light. This wire can be used in conjunction with Smittybilts JK towing wire harness (Part# 2912) which has extra lead wires.

You do not have to hook up the yellow wire, if you choose not to hook up yellow wire, then the on/off switch will power the lights. If yellow wire is not used, insulate the exposed wire.

NOTE: When powering the lights using yellow AUX wire, light output will be 35%. (this is intentional as when used as backup light , many states have regulation on how bright the backup aux light may be.) For 100% light power use on/off switch.

Amp draw.

* Max 0.6 amp 9 when powered via on/off switch.

* 0.45 amps when powered via yellow AUX power wire.

For Technical Support/Warranty Information please call 310-762-9944

Smittybilt, 400 West Artesia Blvd, Compton, CA 90220



WWW.SMITTYBILT.COM

Installation Instructions

Part # 612800-04

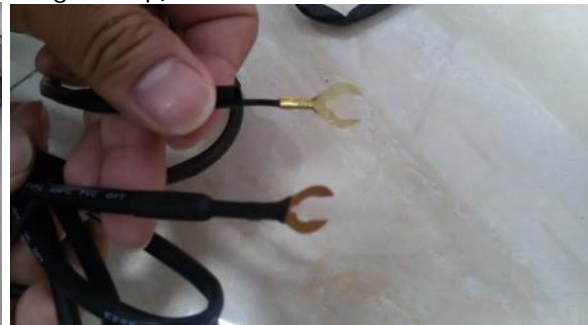
Light Kit for 76858 and 76614
Rear Bumpers



(Complete Wiring Set up)



(Plug wire loom into light plugs)



(Ground both black negative wires)



(Connect Red wire to positive terminal on battery)



(Optional- Connect yellow wire to auxiliary power-like back up lighting)

For Technical Support/Warranty Information please call 310-762-9944

Smittybilt, 400 West Artesia Blvd, Compton, CA 90220