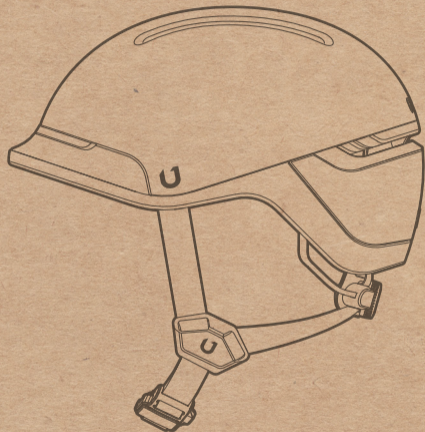


U | F A R O

User manual.



www.unitgear.com

@unitgear

Smart urban helmet

Congrats!

You are among the first to ever experience **FARO**.

This embodies the work of creators, designers, engineers and entrepreneurs trying to build something unique. **FARO** is our best shot at what an urban commuter helmet should be and our small input towards making the roads safer.

You are now a part of this story - you helped make this happen. Wear it with pride.

Welcome to the UNIT 1 family.



IMPORTANT

Please read this manual carefully before using your helmet.

1. Safety information

► **WARNING**



FARO was made for non-motorized recreational pedal cycling only. No helmet can prevent against all injuries. Serious injury or death may occur while cycling even with a helmet. Unit 1 Gear, Inc. and/or its subsidiaries make no claim that this helmet will eliminate all possibilities of injury.



Lights are a supplement (not a replacement) of regular mounted bike lights. Certain places have laws that require lights, comply with local regulations. Turn signals are supplements, not a replacement of hand signals. Unit 1 Gear, Inc. and/or its subsidiaries are not responsible for any failure of communication resulting from turn signals or brake lights. Lights are no guarantee against preventing an accident or collision.



When activating the turn signal, at glance the remote to ensure that you activated the correct turn signal. Activating the wrong turn signal can increase the risk of an accident. If using the turn signals in manual mode, always remember to turn off the signal once used.



This helmet was not designed for motor vehicle use, neither for sporting. Everytime you use this helmet check if nothing is torn, worn, missing, or out of adjustment. This helmet should not be used by children.



Your helmet has a built-in battery. Be careful to follow all the safety guidelines.



Do not use the helmet in direct sunlight, or very warm places for a long period of time. This can damage the product and generate heat that can cause serious injuries. Do not leave the product near open flames. Do not dispose de product in a fire. This can damage the battery, explode or ignite and cause serious injury. Never charge the helmets battery with a flawed charger, it may cause an explosion or ignition. Battery life may vary depending on conditions, environmental factors, usage, etc.



Please note some countries require the use of regular cycling lights. If this is the case, **FARO** may not replace them. Before using **FARO**, make sure you comply with local laws and regulations.

2. Package content



1. FARO Helmet



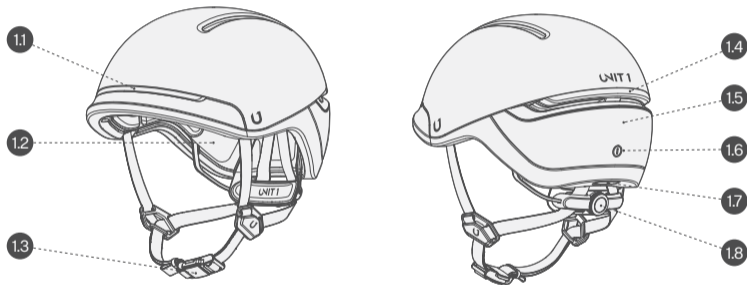
2. USB Type-C / Type-A



3. Navigation remote (optional)

3. Overview

EN

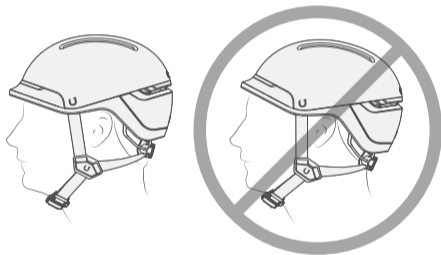


1.1 Front light / **1.2** MIPS liner (optional) / **1.3** Magnetic buckle / **1.4** Back light / **1.5** Hidden lights / **1.6** Power button / **1.7** Charging port / **1.8** Fitting system

4. Fitting instructions

► How to wear your helmet

FARO has a great fit. Follow these instructions carefully to apply your helmet correctly. Consult us if you are not sure which features your helmet has.

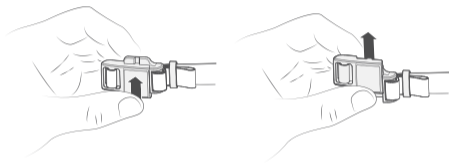


A correct fitted helmet should sit comfortably on your head without pressing or chafing and should not move forward to obscure your vision or rearward to expose your forehead. Please make sure the helmet is positioned the right way.

Be sure to position the buckle under the chin and back against the throat. The straps should fit comfortably around your ears. Test these adjustments before every ride.

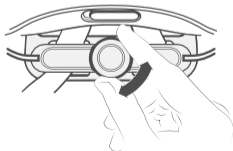
▶ **Adjust your buckles**

To lock the Magnetic buckles bring the two parts together until they snap. To unlock them, slide them sideways as shown below. To keep the chinstrap from loosening or flapping, it must be tucked through the keeper.



▶ **Fitting system**

Tighten or loosen the Fitting system dial to fit the circumference of your head as required.



5. Function guide

▶ **UNIT 1 App**

By simply pairing your phone with your Bluetooth system, you can use the **FARO** app for quicker, easier setup and management.

Download

- ▶ Android: Google Play Store > FARO app
- ▶ iOS: App Store > FARO app
- ▶ or scan the QR code below.



Apple Store



Google Play

▶ **Helmet functions overview**

Action with power button

- Press & hold the power button for 1 sec: **Power On / Off**



- 4 taps: **Helmet reset**

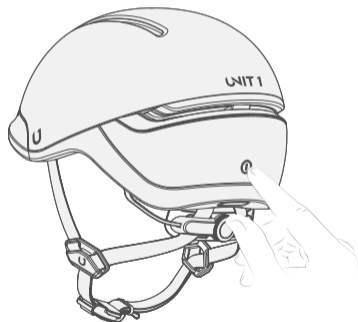


- 8 taps: **Full factory reset (forgets app and remote)**



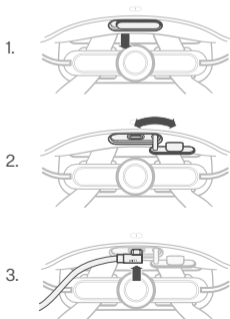
▶ **Power on / off**

Press & hold the power button for 1 sec.



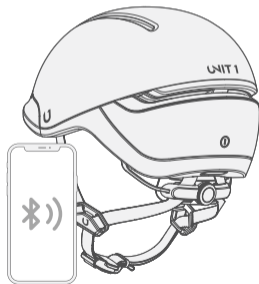
▶ Charging

Pull and turn the silicone lid. Then plug the USB-C cable into the charging port. Once plugged in the hidden lights will display the status of your battery using 6 levels. All 6 levels in a solid green color mean the battery is full. For safety purposes, **FARO** functions are not available while charging. **DO NOT** use the helmet while charging with a powerbank.



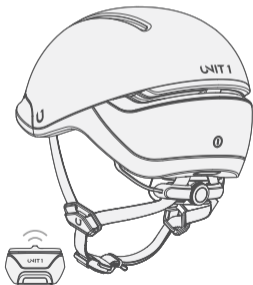
▶ Pairing FARO with the U1 App

1. Make sure your phone's bluetooth connection is active.
2. Power up your helmet
3. Look for your helmet using the U1 App
4. Pair directly from the U1 App



▶ **Pairing FARO with a Navigation Remote**

1. Power on your helmet (should be off before you begin)
2. Press & hold any button on the Nav Remote (lights will blink left & right)
3. Wait for connection. Helmet will show 3 green flashes when complete, Nav Remote will also flash 3 times.



▶ **Troubleshooting**

If you are having trouble with your helmet, follow these steps.

Not powering on

Charge the helmet using the USB-C cable.

Not charging

Make sure the USB-C power source is switched on and plugged correctly.

Not pairing

Make sure your helmet is fully charged and your bluetooth connection is active.

Helmet not responding

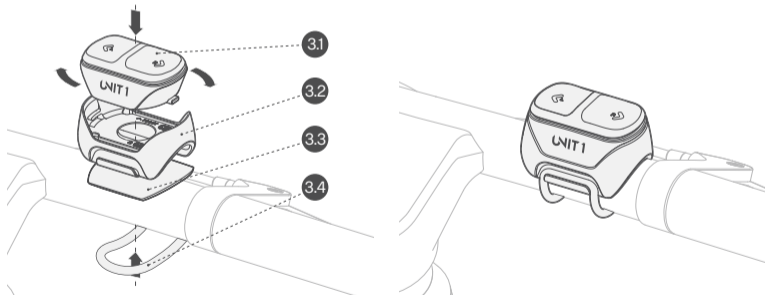
Reset the helmet by pressing the power button for 5 times.

6. Navigation remote

The navigation remote is an optional feature.

► Installation

Attach the dock to your handlebar using 1 of the rubber bands included in the package. Do so by looping the band in the center of the dock as shown below. Place the remote on the dock and twist it clockwise to lock it into place.

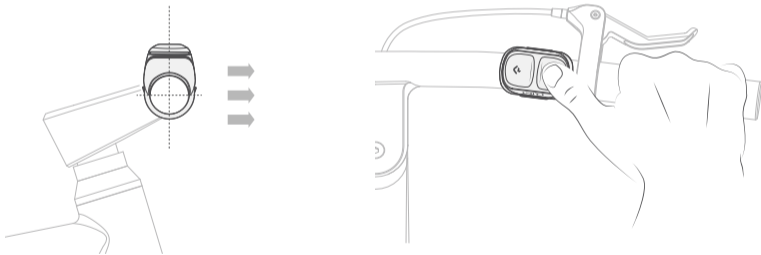


3.1 Navigation remote / **3.2** Dock / **3.3** Rubber pad / **3.4** Rubber band

► **WARNING**



For the Navigation Remote to work properly, always align it perpendicular to the ground and facing up. If the Navigation Remote is not properly aligned, brake lights may not work correctly, which could lead to serious injury or death.



▸ Navigation remote function overview

Action with L&R button

- 1 tap (L or R): **Turn signal Activation**



- > If set on **Automatic**, turn signal will end automatically after designated time
- > If set on **Manual**, Turn Signal will end by tapping any button (L or R)

- hold 3 secs: **System reset**



▸ Pairing your Navigation Remote

1. Start with both Helmet & Nav Remote OFF and close to each other (Fig 1.)

2. Power on your helmet

3. Press & hold any button on the Nav Remote (lights will blink left & right) (Fig 2.)

4. Helmet will show 3 green flashes when complete and Nav Remote will flash 3 times when connection is made (Fig 3.).

5. Your remote will stay paired to your helmet unless you replace it by another one or perform a factory reset of your helmet.



Fig 1.



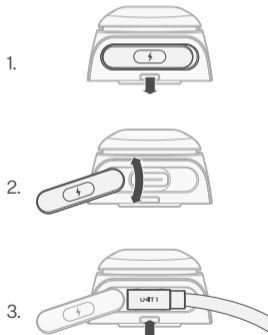
Fig 2.



Fig 3.

▶ **Charging**

Pull and turn the silicone lid. Then plug the USB-C cable into the charging port. Use the same cable than the helmet.



▶ **Troubleshooting**

If you are having trouble with your Navigation Remote, follow these steps.

Not powering on

Charge the remote using the USB-C cable.

Not charging

Make sure the USB-C power source is switched on and plugged correctly. The LED indicator will display a slow pulse when charging.

Not pairing

Move the device closer to each other and away from any interference or obstruction. Make sure the helmet is not connected to another remote when entering pairing mode.

Remote not responding

Reset the remote by pressing & holding either button for 3 seconds.

5. More about your helmet

▸ **General safety**

No helmet can protect the wearer against all possible impacts. A severe impact, sharp object, improper use, or incorrect adjustment could cause conditions beyond the protection of the helmet. To be effective, a helmet must fit and be worn correctly. The helmet is designed to be retained by a strap under the lower jaw. To check for correct fit, place the helmet on your head and make any adjustments indicated. Securely fasten retention system. Grasp the helmet and try to rotate it to the front and rear. A correctly fitted helmet should be comfortable and should not move forward to obscure vision or rearward to expose the forehead. Failing to properly position the helmet can result in serious injury to you or others.

The helmet is designed to absorb shock by partial destruction of the shell and liner. This damage may not be visible. Therefore, if subjected to a severe blow, the helmet should be destroyed and replaced even if it appears undamaged. The helmet has a limited lifespan in use and should be replaced when it shows obvious signs of wear. Helmets parts lose strength over time, so even if the helmet has not been impacted or damaged, replace it after three years.

▸ **Regulatory**

FARO was designed to comply with most International Safety Certifications and meets C.P.S.C. 16 CFR Part 1203 United States Federal Safety Standard for Bicycle Helmets (Consumer Product Safety Commission) and with the CE, EN1078:2012 +A1:2012 Helmets for pedal cyclists, Skateboarders or Rollerskaters (European Safety Standard).

SPECIFICATION OF RADIO TRANSMISSION

| | | |
|-----------------------------|-----------------|------------------------|
| PRODUCT: | FARO | FARO Navigation Remote |
| MODEL NUMBER: | FARO_HELMET | FARO_REMOTE |
| OPERATING FREQUENCY: | 2402 - 2480MHz | 2402 - 2480MHz |
| POWER: | DC 3.7V 1850mAh | DC 3.7V 100mAh |

The above product is in conformity with the PPE Regulation(EU) 2016/425 and is identical to the PPE which is subject of EU certificate (TBC) issued by ITS Testing services UK Ltd

The above product is in conformity with the European Radio Equipment Directive (RED) (2014/53/EU) which is subject of EU certificate (TBC) issued by Telefication

Bluetooth LE
Maximum Output Power: 0dBm EIRP Average (Calculated)
Maximum Antenna Gain: 1dBi

You can find the declaration of conformity by the following links:
www.unit1gear.com/EU_DoC

FCC STATEMENT

This device complies with Part 15 of the FCC Rules. Operation is subject to the following two conditions:

- (1) This device may not cause harmful interference, and
- (2) This device must accept any interference received, including interference that may cause undesired operation.

Warning: Changes or modifications not expressly approved by the party responsible for compliance could void the user's authority to operate the equipment.

NOTE: This equipment has been tested and found to comply with the limits for Class B digital device, pursuant to Part 15 of the FCC Rules. These limits are designed to provide reasonable protection against harmful interference in a residential installation. This equipment generates uses and can radiate radio frequency energy and, if not installed and used in accordance with the instructions, may cause harmful interference to radio communications. However, there is no guarantee that interference will not occur in a particular installation. If this equipment does cause harmful interference to radio or television reception, which can be determined by turning the equipment off and on, the user is encouraged to try to correct the interference by one or more of the following measures:

Reorient or relocate the receiving antenna.

Increase the separation between the equipment and receiver.

Connect the equipment into an outlet on a circuit different from that to which the reciver is connected.

Consult the dealer or an experienced radio/TV technician for help.

RF WARNING STATEMENT:

The device has been evaluated to meet general RF exposure requirement. The device can be used in portable exposure condition without restriction.

-English: "This device complies with Industry Canada license-exempt RSS standard(s). Operation is subject to the following two conditions:

(1) This device may not cause interference, and

(2) This device must accept any interference, including interference that may cause undesired operation of the device."

▶ **Helmet care**

Store your helmet in a dry place, away from excessive heat sources like radiators, automobile trunks or direct sunlight. Clean your helmet only using a slightly damp soft cloth or sponge.

The helmet can be damaged using chemical cleaners, specialty petroleum base solvents.

Replace your helmet if there is any sign or hint of damage, DO NOT use a damaged helmet. Using a damaged helmet or worn may result in more serious injuries in the event of a fall.

Inner pads are removable and can be washed by hand with mild soap and water, rinsed and dried.

The protection of this helmet may be severely reduced by the application of paint, adhesive stickers and transfers, cleaning fluids, chemicals, and other solvents.

Never remove or modify the original elements that constitute the helmet, or add any accessories not recommended by Unit 1 Gear, Inc., this may affect the protection given by the helmet.

Store in a dry place, away from heat (for example, sunlight through a car window) .

6. Warranty

▶ **1 year limited warranty**

Unit 1 Gear, Inc. warrants to the original purchaser of this product that the product is free of defects in material and workmanship for a period of (1) year from the original date of purchase. This warranty does not apply to defects of physical damage resulting from abuse, neglect, improper repair, improper fit, alterations, or use unintended by the manufacturer.

If your **FARO** is found to be defective in materials or workmanship within one year from the date of purchase, Unit 1 gear, Inc. will at its sole option either repair or replace the helmet free of charge. Unit 1 Gear, Inc. does not warrant any helmet damaged due to heat or contact with solvents. This warranty does not affect your statutory rights. This warranty is in lieu of all other agreements and warranties, general or special, express or implied and no representative or person is authorized to assume liability on behalf of Unit 1 Gear, Inc. in connection with the sale or use of this product.

This limited warranty only applies to products purchased directly from Unit 1 Gear, Inc. official stores or a Unit 1 Gear, Inc. authorized reseller.

This limited warranty does not cover normal wear and tear.

Unit 1 Gear, Inc. does not offer warranty regarding battery life used in **FARO**. Battery life may vary depending on its configuration and use. Unit 1 Gear, Inc. does not guarantee or promise any specific level of performance or battery life associated with the use of its product or any feature in it.

U | F A R O

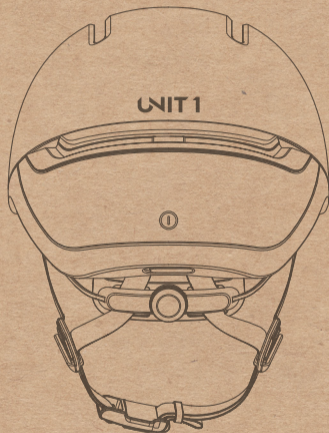
contact@unit1gear.com

Unit 1 Gear, Inc.

3411 Silverside Road, Rodney Building #104
Wilmington. DE 19810
USA.

www.unit1gear.com

youtube.com/unit1news
facebook.com/u1gear
instagram.com/unit1gear



www.unitgear.com

@unitgear

Smart urban helmet