



**EMPIRE**  
**OFFROAD**

## JK INFERNO Series Tail Lights Installation Instructions

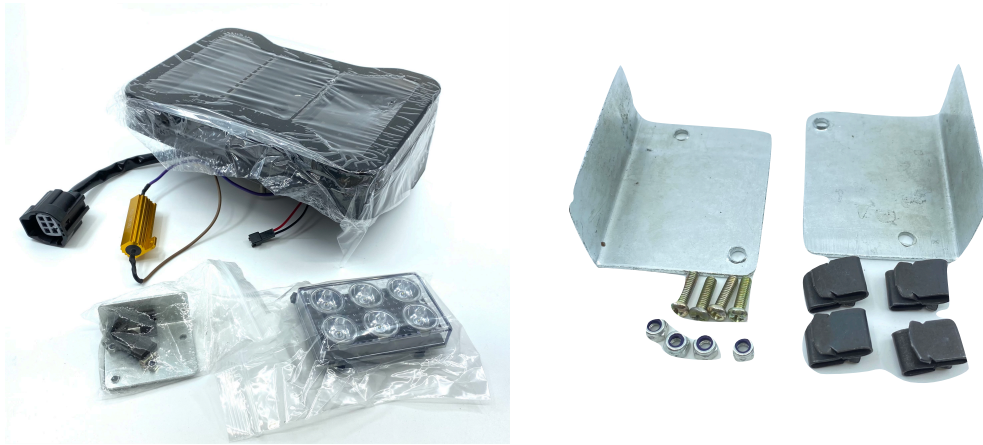
***!!! Disconnecting battery is recommended before attempting any electrical work or installation!!!***

### **Installation Guide:**

1. Disconnecting battery is recommended.
2. Remove old tail lights and inspect vehicle wiring harness and connectors for any damage. Repair if needed.
3. Disconnect old tail light connector and set aside old lights and screws.
4. Using bolts and nuts provided in parts bag, attach load resistors to the supplied mounting brackets as shown in the image below. Attach “z” clips as shown as well. Attach load resistor bracket to the body panel inside the body compartment behind the tail light.
5. Loosen Inferno mounting screws using 5mm Allen wrench.
  - **DO NOT REMOVE SCREWS COMPLETELY**
6. Feed center reverse light connector wire thru the center opening hole before mounting light to Jeep. **NOTE LEFT VS RIGHT HOUSINGS**
7. Connect tail light harness to Jeep harness.
8. Attach tail light to Jeep and hold in place while you tighten the mounting screws. These are clamping style brackets so take care to not over tighten or the housing can crack.
9. Wiggle the tail light to make sure it is tight to the Jeep before installing the center reverse light. The reverse lights cover up the mounting screws and must be removed to tighten or loosen the tail light housing.
10. Connect center reverse light and snap into taillight housing.
11. Reconnect battery and test each function for correct operation.



## What's In the box



## Attach Load Resistors

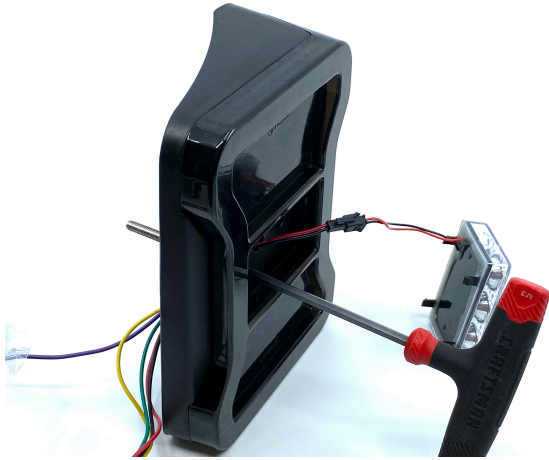


## Feed Thru Reverse Wire





## Attach Light Housing



## Snap in Reverse Light

