



EMPIRE
OFFROAD

Highrise 8-Channel RGB G2 Universal Control Switch Panel System

Product Specifications

Input Voltage 12-24 vdc
Total Power 1200w at 12vdc
*total input current limit is 100A

Max output

channels 1-2 5A ea
channels 3-4 10A ea
channels 5-6 20A ea
channels 7-8 30A ea

!!! Disconnect battery before installation!!!

Installation Guide:

1. Disconnect battery
2. Attach switch box using supplied mounting bracket ensuring you have enough main supply cable to reach your battery.
3. Attach BLACK cable to switch then attach to negative battery terminal.
4. Attach RED cable to switch then to main breaker.
5. Attach second RED cable to the main breaker, then to the positive battery terminal.
6. Attach the small red wire to a power source.
 - ACC wire- if you attach the small red wire to an accessory circuit the ignition will need to be on to be able to power up the switch.
 - Positive battery terminal - Attach directly to the positive battery terminal if you wish for the switch to operate without the ignition switch being on. This could risk draining the battery if the switch is left on for an extended period of time. Crank up the vehicle to recharge the battery.
7. Attach the white wire to a switch or just tap to positive terminal for setting backlight brightness control. There are 5 brightness levels to choose from. Each cycle on will change modes.
8. Attach all desired components to each terminal. Ensure the positive wire is attached to the positive terminal and negative wires are attached to negative terminal of each relay position. also check to make sure you don't overload each relay position. Use chart above for circuit loading.
9. Reconnect battery and test each circuit for correct operation.



Small RED Wire provides signal power to relays. See instructions above for connection options.

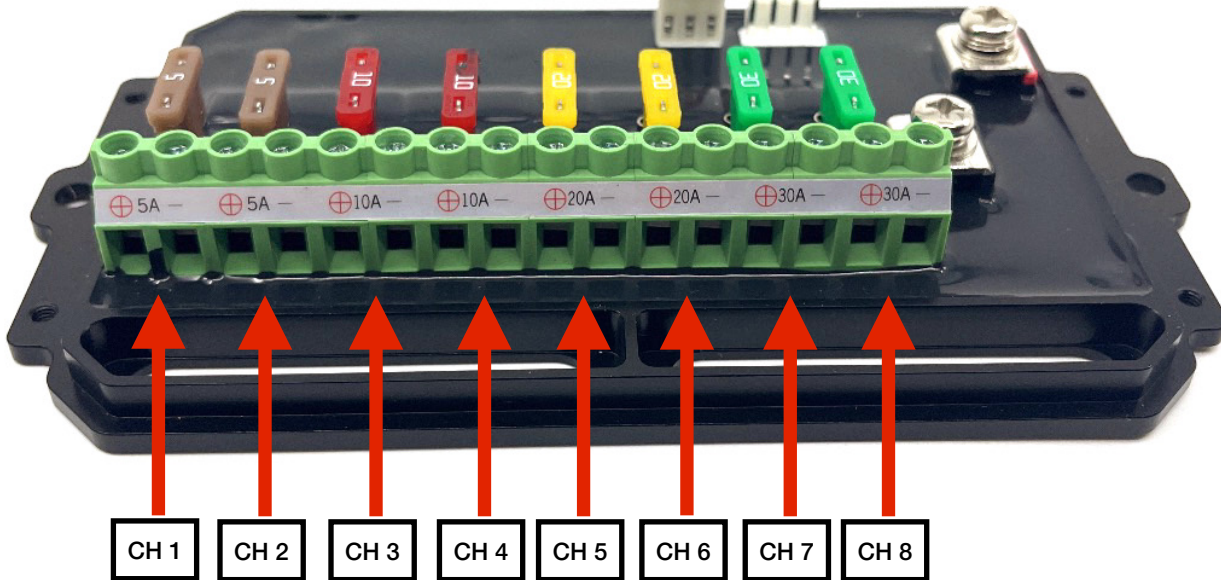
Small YELLOW Wire -NOT USED

Small WHITE Wire controls switch panel backlight brightness. After the switch is powered up, apply 12v+ to this wire momentarily to cycle thru the 5 brightness settings.

EMPIRE OFFROAD



Plug the control panel wire harness to this plug.



MAIN POSITIVE POWER LUG

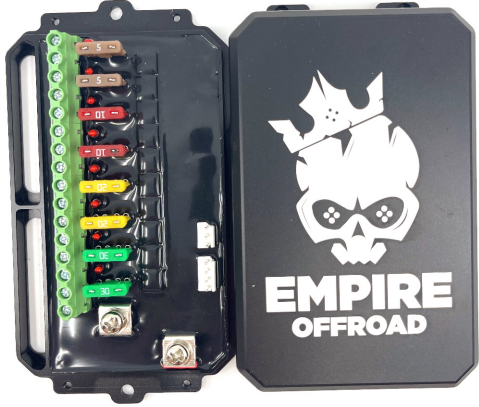
MAIN NEGATIVE POWER LUG

LED indicator on switch panel illuminates when fuse is blown for quick diagnostics.



WHATS INCLUDED

SWITCH BOX WITH COVER



CONTROL PANEL



CONTROL PANEL WIRE



CONTROL PANEL MOUNTS



SIGNAL WIRE HARNESS



100A BREAKER



HARDWARE BAG



FUSE PULLER



WIRE TIES



FUSE TAP



STICKER SHEETS



SWITCH BOX MOUNTING BRACKETS



POWER CABLES



RED 9" RED 24" BLACK 24"

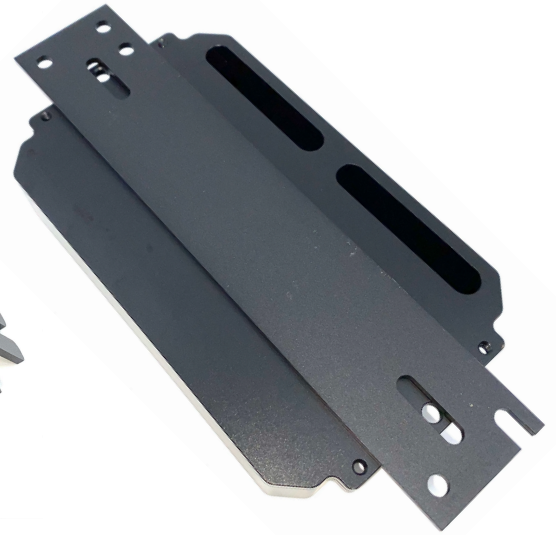


SWITCH BOX MOUNTING OPTIONS

ANGLE
MOUNT

ANGLE MOUNT
REVERSED

FLAT SURFACE
MOUNT



CONTROL SWITCH MOUNTING OPTIONS

ANGLE
MOUNT

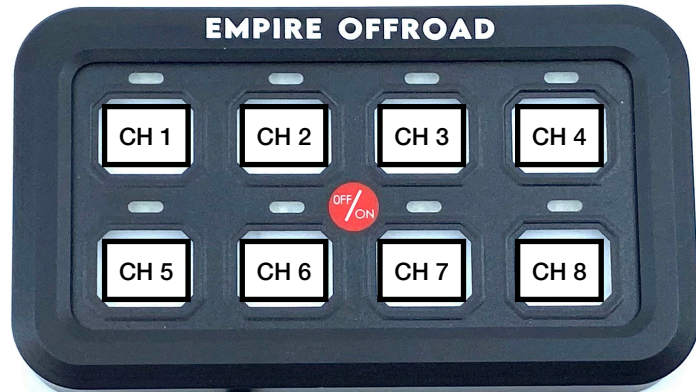
FLAT SURFACE
MOUNT



PROGRAMMING THE CONTROLLER

COLOR MODES

1. RED
2. GREEN
3. BLUE
4. CYAN
5. YELLOW
6. MAGENTA
7. TEAL
8. OFF(SCROLL)-this mode will scroll thru colors while the switch is on



CHANGING BACKGROUND COLOR

With all channels OFF, simultaneously press the “OFF/ON” button as well as the “CH 8” button. Once the colors start changing, release the “CH 8” button while still holding in the “OFF/ON” button. The background colors will begin scrolling thru the different options. Once you get to the color you want, release the “OFF/ON” button. Then, press and release the “OFF/ON” button again to exit programming mode.

OPERATION MODES:

- *mode 1- continuous - press channel button once for on and again for off
- *mode 2 - momentary - press channel button once and hold for on. Release for off.
- *mode 3 - strobe mode - press once for on strobe and again for off

PROGRAMMING THE SWITCHING MODES FOR EACH CHANNEL

- With all channels OFF, press and hold the “OFF/ON” button until the channel lights flash then released the “OFF/ON” button.
- This is mode 1 - by default all channels are programmed to this mode.
- Press the “OFF/ON” button once to move to mode 2. Press each channel you wish to be programmed to mode 2.
- Press the “OFF/ON” button once more to move to mode 3. Press each channel you wish to be programmed to mode 3.
- Press the “OFF/ON” button to move back to mode 1.
- Continue pressing the “OFF/ON” button to cycle thru the modes until you have successfully programmed each channel to the mode of your choice.
- Once you are finished, press and hold the “OFF/ON” button until the lights go off. This exits programming mode.

