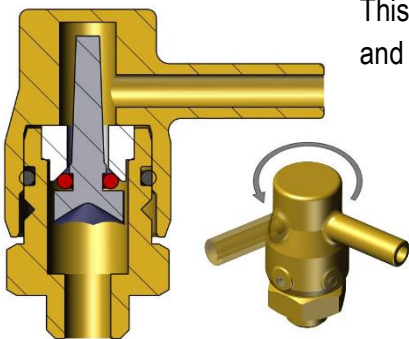


# la marzocco technical bulletin 174

## New Anti-Suction Valve

January 25, 2022

We would like to inform you about the introduction of a new version of the L192 anti-suction valve (vacuum breaker). The new valve can rotate 360 degrees. This makes assembling and disassembling easier and allows for installation in tighter spaces.

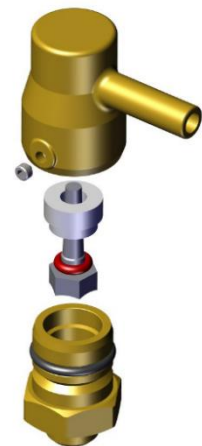


This new L192, 1/8" fitting, will replace both the previous L192, 1/8" fitting, and L193, 1/4" fitting.

In the new valve, the upper housing is secured onto the valve body with two set screws and a seal is ensured using an o-ring. To rotate or remove the housing, simply loosen the two set screws, and turn or pull apart.

The internal components; pin, internal o-ring, PTFE seal; are all identical to previous L192

and L193 versions. When replacing the anti-suction valve, it is recommended that you also change the copper washer to ensure a proper seal. Note: when the valve is attached directly to the steam valve the L100/D, copper washer, can be substituted for the B.1.001.TR, copper crush washer, when using the new L192.



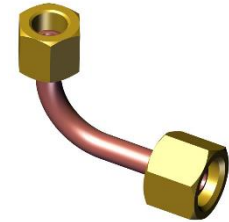
The new anti-suction valve is present in machines with the following serial numbers and higher:

- Linea Classic: L069990
- Linea PB: PB027795
- GB5 S: GN000493
- KB90: KB002261
- Linea Mini: LM0030142
- Leva: next in production
- Strada: next in production

The new L192 version is a drop-in replacement for the previous L192. When replacing the L193 with the L192, an adapter must be used. Please take note of the following cases when doing so:

### Linea Mini/GS3/Strada Steam Boiler

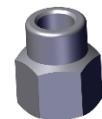
The new L192 must be installed with a new version of A.2.017, copper tube. While it is the same part number, the A.2.017 is now 1/4" BSP to 1/8" BSP. All A.2.017 are now this new version.



It is recommended that you retrofit your machine to use the B.2.029, SMA vacuum breaker. B.2.029 attaches directly to the boiler and seals with copper washer L100/1A. You will need to remove the L037/3, 1/4" BSP M to 1/4" BSP M fitting, and its sealing copper washer to make this retrofit.

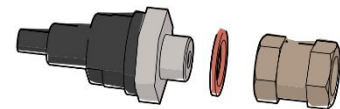
### Proportional Steam Valve

For machines that have the proportional steam valve; Strada AV, Strada EE, Strada EP, Strada EP 1 Group, Leva X, Leva 1 Group; the new L192 must be installed using an A.5.154, 1/8" BSP to 1/4" BSP.



### Linea PB Steam Boiler

On the Linea PB, you may rebuild the existing L193 with new internal components or you can retrofit the new B.2.029, SMA vacuum breaker. To retrofit the B.2.029 you will remove the TL09, tube from steam boiler to pressure switch, and replace it with an A.2.003, fitting 1/4" BSP F to 1/4" BSP F. Use PTFE tape to seal between the L129, cross fitting, and the A.2.003. A copper washer, L100/1A, is used to seal between the B.2.029 and the A.2.003.



Do not hesitate to contact our solutions team with any questions you have about this technical bulletin.  
solutions.usa@lamarzocco.com  
206.706.9104 x101