



**CANADA  
2023**

# **Stainless trench drains**



# VODALAND today

Established in 2000, Vodaland is an international manufacturer and supplier specializing in the fields of water collection and removal, custom project engineering, and terrain development.

**7** countries  
USA, Canada, France, Spain, Poland, Romania, Ukraine



<b>4</b> Production Plants	<b>11</b> Sales offices	<b>ISO</b> certified according to ISO 9001	<b>R&amp;D</b> own service R&D	 Project Service	<b>350</b> international team of workers
-------------------------------	----------------------------	---	-----------------------------------	---------------------	---

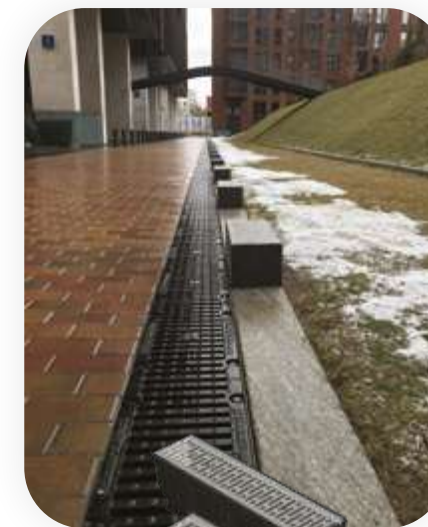
## Categories

  <ul style="list-style-type: none"> <li>✓ Trench Drains</li> <li>✓ Slot drains</li> <li>✓ Industrial Drains</li> <li>✓ Catch Basins</li> </ul>	  <ul style="list-style-type: none"> <li>✓ Oil/water separators</li> </ul>	  <ul style="list-style-type: none"> <li>✓ Erosion Control Grids</li> <li>✓ Plastic Paving Grids</li> </ul>	  <ul style="list-style-type: none"> <li>✓ Manhole Covers</li> <li>✓ Garden Border/Edging</li> </ul>
---	--	---	--

# Product Title Terminology

Series	
<b>BASE</b>	Classified as load classes A-C
<b>PRO</b>	Classified as load classes D-E
<b>MEGA</b>	Classified as load classes D-F
Product Lines	
<b>Concrete</b>	Product made of Fiber Concrete material
<b>Polymer concrete</b>	Product made of Polymer Concrete material
<b>Plastic</b>	Product made of PPE Plastic material
<b>STAINLESS</b>	Fully Stainless Steel system
Width	
<b>Inches</b>	The inches in product title refers to internal width

## Series explanation



**BASE series:**  
**Load Class A15-C250**  
Small & medium loads, being ideal for residential areas and light commercial application.



**PRO series:**  
**Load Class D400-E600**  
Medium & heavy-duty loads such as gas stations, parking garages, warehouses & forklifts, and curbsides.









**MEGA series:**  
**Load Class D400-F900**  
Used for heavy duty & extreme loads such as heavy traffic roads & highways, industrial zones, and airports.

# Load Classifications

Load classifications have been done according to EN 1433; the only standard written specifically for grated trench drains, and internationally recognized.

Each item is designed for a specific load class. The load classes will aid you in choosing the right channels and Grates in accordance with the requirements of your construction project.

EASY Series		A 15 (3,300 lbs.)	Pedestrians, bicycles and wheel chair traffic. Pedestrian zones, parks, recreation areas, stadiums etc.
		B 125 (27,500 lbs.)	Medium-duty pneumatic tire traffic, autos and light trucks at speeds less than 20 m.p.h. Residential areas, parking lots, etc.
		C 250 (55,000 lbs.)	Heavy-duty pneumatic tire forklifts, tractor-trailers, buses. Road shoulders, auto services, garages, etc.
PRO Series		D 400 (88,000 lbs.)	Heavy-duty hard tire forklifts, trucks. Gas stations, car washes, industrial areas, warehouses, etc.
		E 600 (132,000 lbs.)	General dock and aircraft pavements.
		F 900 (198,000 lbs.)	General docks and aircraft pavements subject to high wheel loads.

# Type of Surface Drainage

**Linear Drainage Systems** are used to collect storm-water and melted snow from a large area.



Linear and Point Drainage Systems are both used in storm-water removal and distribution, each with their own function and purpose. The linear channels collect and drain water from the surface, providing safety for road surfaces and pedestrian traffic.

**Point Drainage Systems** are used for local collection of storm-water and snowmelt.



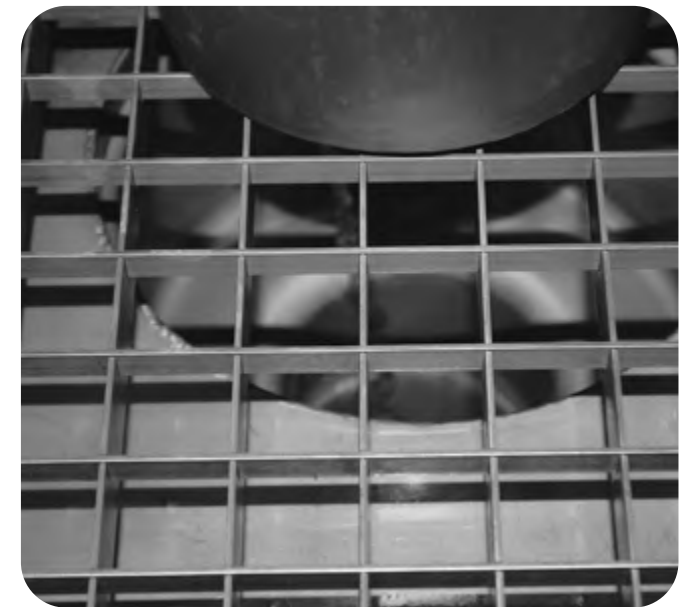
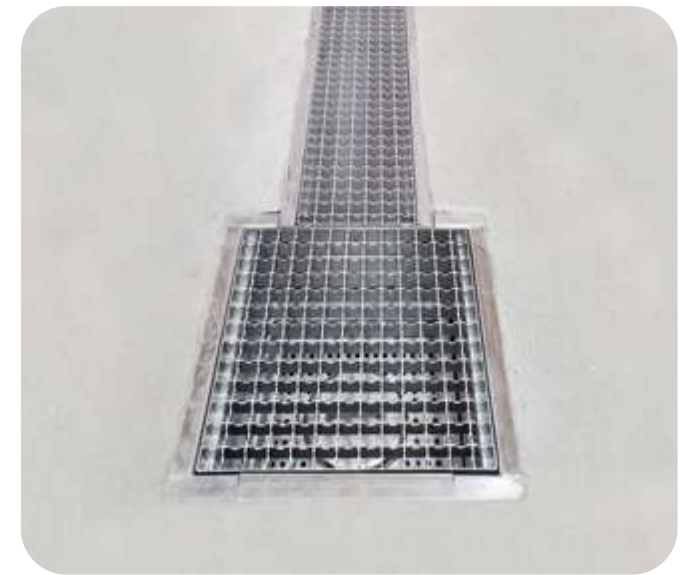
Point drainage systems perform the function of collecting water at a center point. Our catch basins and inline inline catch basins are equipped with a basket to catch debris and sand, preventing excess sediments going into the system.

## CONTENTS

### DRAIN

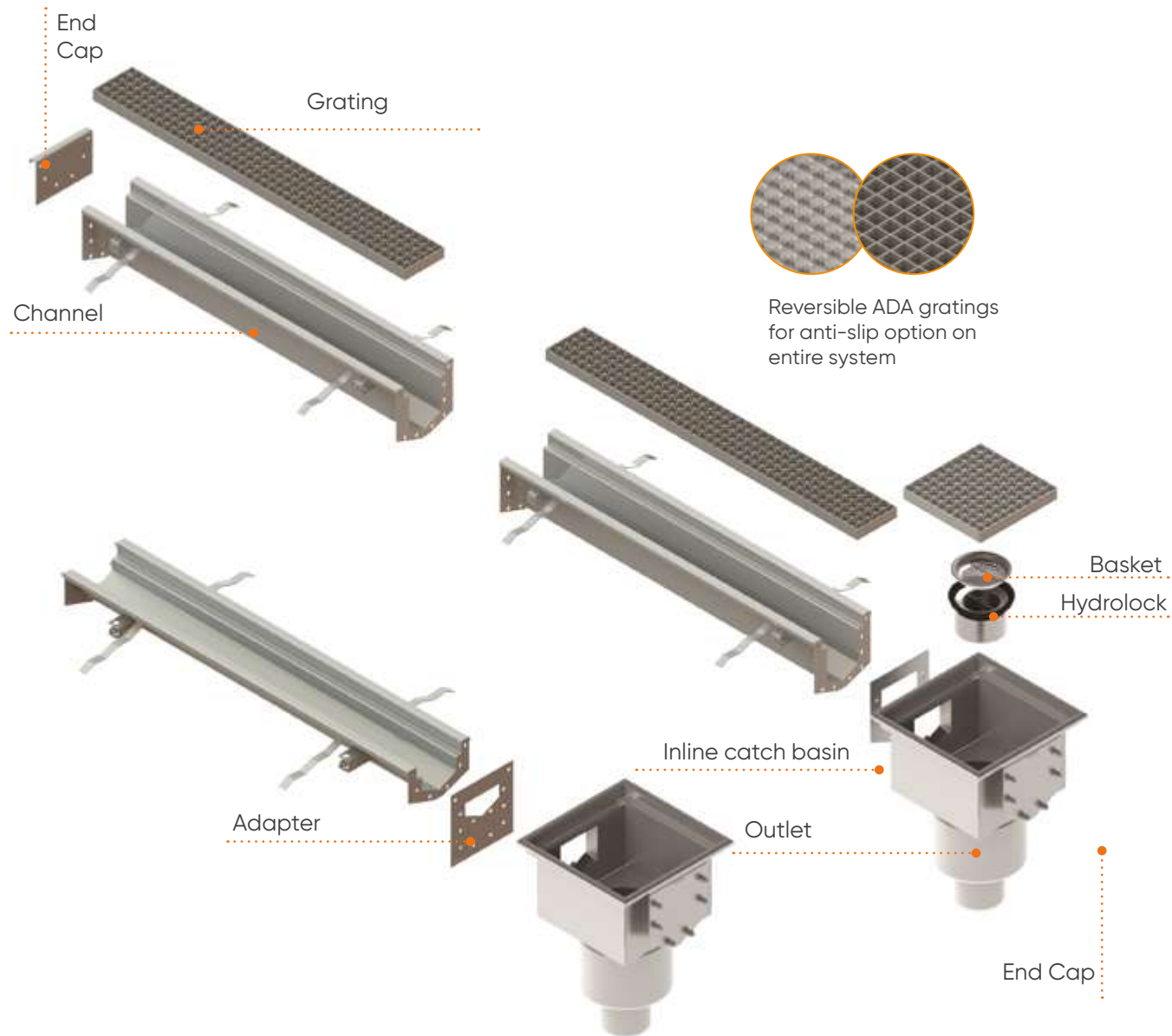
#### Industrial STAINLESS steel systems

- 4" STAINLESS trench drain ..... 7
- 8" STAINLESS trench drain ..... 9
- 12"x12" STAINLESS trap ..... 11
- STAINLESS slot drain system ..... 12

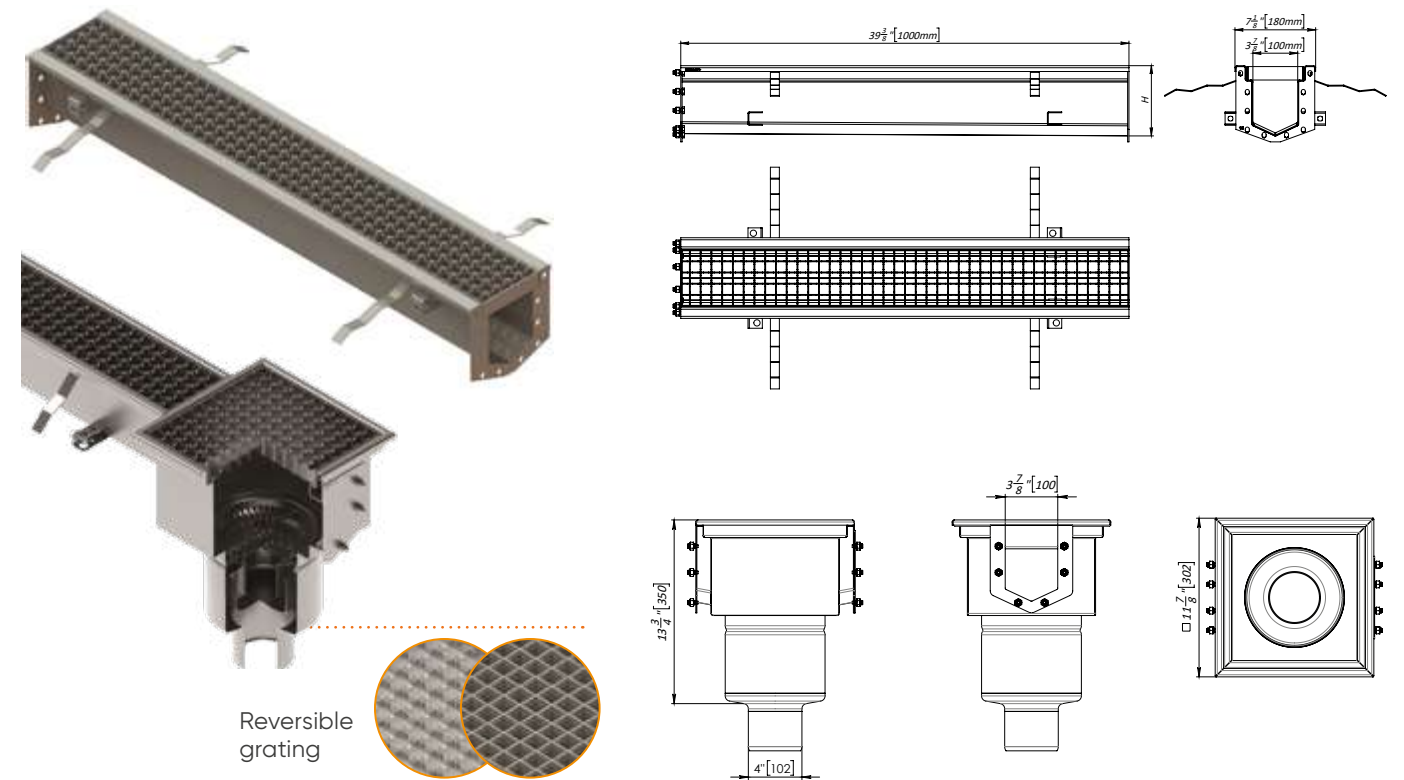


# Industrial STAINLESS steel systems

Perfect for kitchens, plants, wineries, and sanitary locations.  
 Composed grade 304 stainless steel.  
 Reversible ADA gratings for anti-slip option on entire system.  
 Comes with channel, grates, and end caps.  
 Chemical, Acid, and corrosion resistant.  
 Equipped with leveling rebar brackets already on the system.  
 V-Convex bottom enables faster water movement  
 Can be used with our 100% STAINLESS steel inline basin.



## 4" STAINLESS trench drain

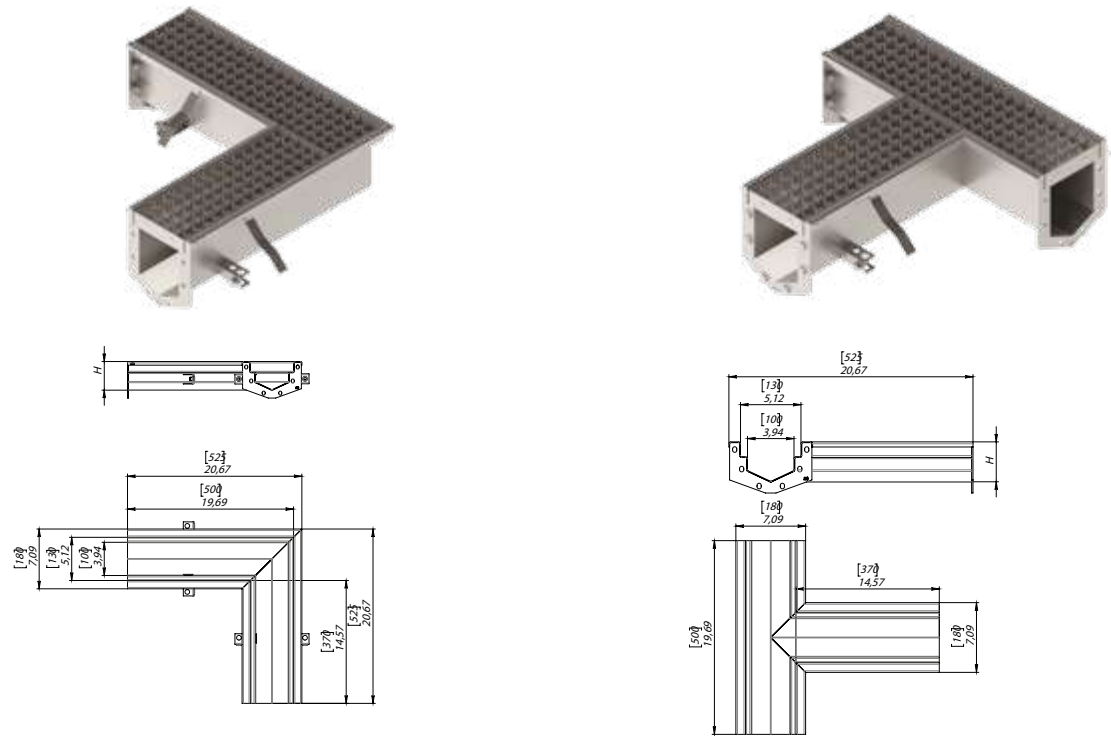


### 1% PRESLOPED

Article	Name	h, in	h, mm	H, in	H, mm	W, lbs
1 992201	4" STAINLESS trench drain H3.3"-3.1"	3.1	80	3.3	85	13.3
2 992202	4" STAINLESS trench drain H3.5"-3.3"	3.3	85	3.5	90	13.7
3 992203	4" STAINLESS trench drain H3.7"-3.5"	3.5	90	3.7	95	14.1
4 992204	4" STAINLESS trench drain H3.9"-3.7"	3.7	95	3.9	100	14.5
5 992205	4" STAINLESS trench drain H4.1"-3.9"	3.9	100	4.1	105	14.8
6 992206	4" STAINLESS trench drain H4.3"-4.1"	4.1	105	4.3	110	15.2
7 992207	4" STAINLESS trench drain H4.5"-4.3"	4.3	110	4.5	115	15.6
8 992208	4" STAINLESS trench drain H4.7"-4.5"	4.5	115	4.7	120	16
9 992209	4" STAINLESS trench drain H4.9"-4.7"	4.7	120	4.9	125	16.4
10 992210	4" STAINLESS trench drain H5.1"-4.9"	4.9	125	5.1	130	16.7
11 992211	4" STAINLESS trench drain H5.3"-5.1"	5.1	130	5.3	135	17.1
12 992212	4" STAINLESS trench drain H5.5"-5.3"	5.3	135	5.5	140	17.5
13 992213	4" STAINLESS trench drain H5.7"-5.5"	5.5	140	5.7	145	17.9
14 992214	4" STAINLESS trench drain H5.9"-5.7"	5.7	145	5.9	150	18.2
15 992215	4" STAINLESS trench drain H6.1"-5.9"	5.9	150	6.1	155	18.6

### NEUTRAL

Article	Name	H, in	H, mm	W, lbs
1 992221	4" STAINLESS trench drain H3.3"	3.3	85	13.5
2 992222	4" STAINLESS trench drain H3.5"	3.5	90	13.9
3 992223	4" STAINLESS trench drain H3.7"	3.7	95	14.3
4 992224	4" STAINLESS trench drain H3.9"	3.9	100	14.7
5 992225	4" STAINLESS trench drain H4.1"	4.1	105	15
6 992226	4" STAINLESS trench drain H4.3"	4.3	110	15.4
7 992227	4" STAINLESS trench drain H4.5"	4.5	115	15.8
8 992228	4" STAINLESS trench drain H4.7"	4.7	120	16.2
9 992229	4" STAINLESS trench drain H4.9"	4.9	125	16.6
10 992230	4" STAINLESS trench drain H5.1"	5.1	130	16.9
11 992231	4" STAINLESS trench drain H5.3"	5.3	135	17.3
12 992232	4" STAINLESS trench drain H5.5"	5.5	140	17.7
13 992233	4" STAINLESS trench drain H5.7"	5.7	145	18.1
14 992234	4" STAINLESS trench drain H5.9"	5.9	150	18.4
15 992235	4" STAINLESS trench drain H6.1"	6.1	155	18.8



4" Corner element

Article	Name	H, in	H, mm	W, lbs
1 992241	4" STAINLESS trench drain (corner element)	3.3	85	8.96
2 992242		3.5	90	9.14
3 992243		3.7	95	9.31
4 992244		3.9	100	9.84
5 992245		4.1	105	10
6 992246		4.3	110	10.2
7 992247		4.5	115	10.4
8 992248		4.7	120	10.9
9 992249		4.9	125	11.1
10 992250		5.1	130	11.3
11 992251		5.3	135	11.5
12 992252		5.5	140	12
13 992253		5.7	145	12.2
14 992254		5.9	150	12.3
15 992255		6.1	155	12.5

4" End Cap

Article	Name	For Channel Height, in
992301	Type A	3.7 - 3.1
992302	Type B	4.5 - 3.9
992303	Type C	5.3 - 4.7
992304	Type D	6.1 - 5.5

4" End Cap with vertical outlet

Article	Name	For Channel Height, in
992320	Type A	3.7 - 3.1
992321	Type B	4.5 - 3.9
992322	Type C	5.3 - 4.7
992323	Type D	6.1 - 5.5

4" T-element

Article	Name	H, in	H, mm	W, lbs
1 992261	4" STAINLESS trench drain (T-element)	3.3	85	8.29
2 992262		3.5	90	8.43
3 992263		3.7	95	8.57
4 992264		3.9	100	9.24
5 992265		4.1	105	9.38
6 992266		4.3	110	9.52
7 992267		4.5	115	9.66
8 992268		4.7	120	10.36
9 992269		4.9	125	10.49
10 992270		5.1	130	10.63
11 992271		5.3	135	10.77
12 992272		5.5	140	11.44
13 992273		5.7	145	11.58
14 992274		5.9	150	11.72
15 992275		6.1	155	11.86

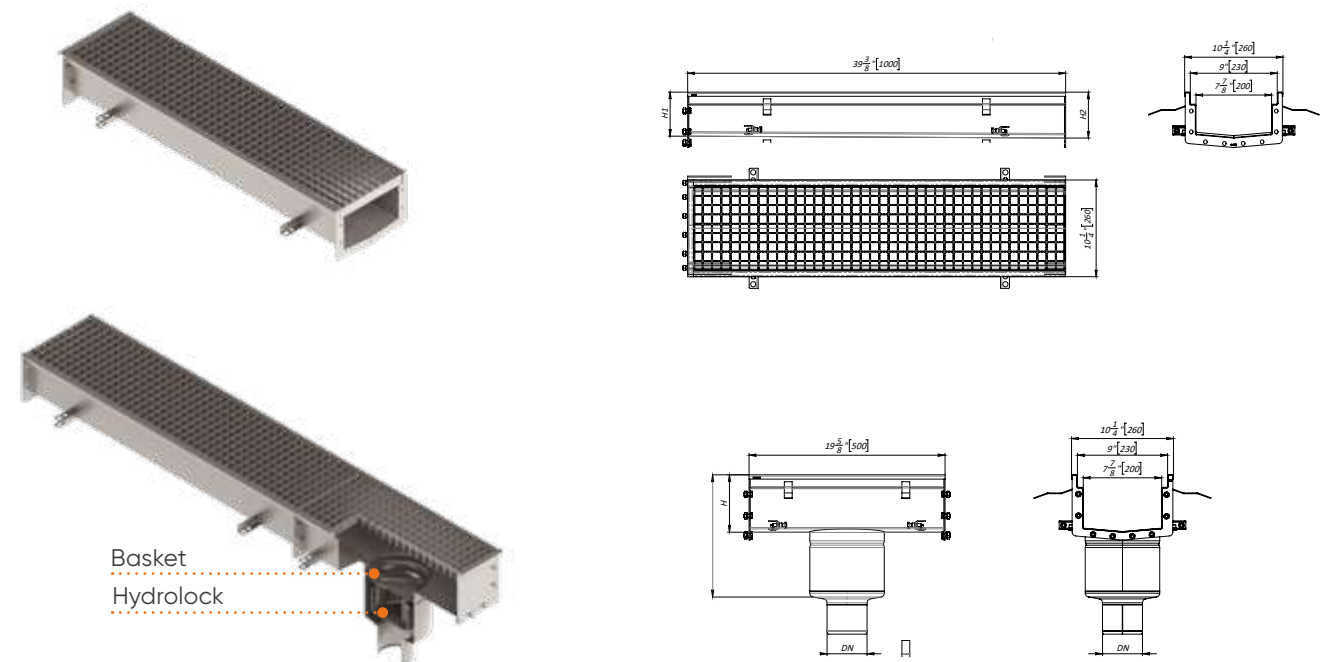
4" Transition Flange

Article	Name	For Channel Height, in
992307	Type A	3.7 - 3.1
992308	Type B	4.5 - 3.9
992309	Type C	5.3 - 4.7

4" End Cap with horizontal outlet

Article	Name	For Channel Height, in
992330	Type A	3.7 - 3.1
992331	Type B	4.5 - 3.9
992332	Type C	5.3 - 4.7
992333	Type D	6.1 - 5.5

8" STAINLESS trench drain

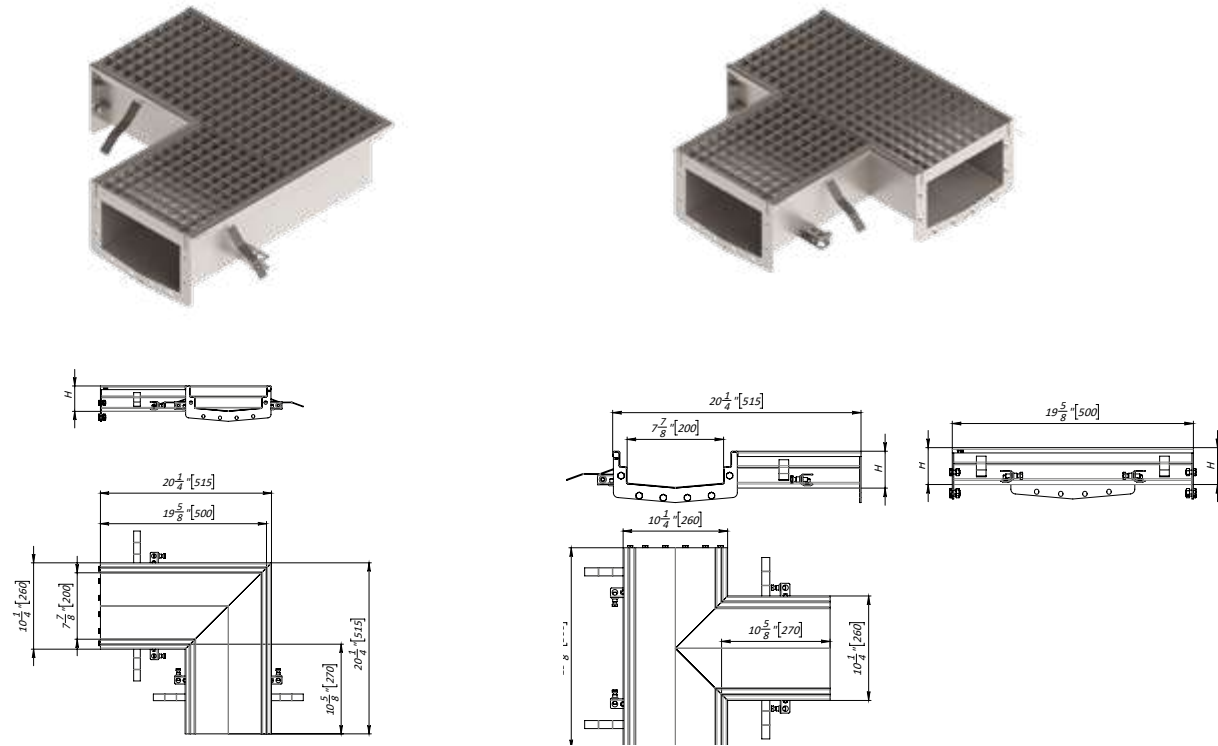


1% PRESLOPED

Article	Name	h, in	h, mm	H, in	H, mm	W, lbs
1 992401	8" STAINLESS trench drain H3.0"-2.8"	2.8	70	3.0	75	12.3
2 992402	8" STAINLESS trench drain H3.1"-3.0"	3.0	75	3.1	80	12.4
3 992403	8" STAINLESS trench drain H3.3"-3.1"	3.1	80	3.3	85	12.6
4 992404	8" STAINLESS trench drain H3.5"-3.3"	3.3	85	3.5	90	13.0
5 992405	8" STAINLESS trench drain H3.7"-3.5"	3.5	90	3.7	95	13.4
6 992406	8" STAINLESS trench drain H3.9"-3.7"	3.7	95	3.9	100	13.6
7 992407	8" STAINLESS trench drain H4.1"-3.9"	3.9	100	4.1	105	13.7
8 992408	8" STAINLESS trench drain H4.3"-4.1"	4.1	105	4.3	110	14.1
9 992409	8" STAINLESS trench drain H4.5"-4.3"	4.3	110	4.5	115	14.6
10 992410	8" STAINLESS trench drain H4.7"-4.5"	4.5	115	4.7	120	14.7
11 992411	8" STAINLESS trench drain H4.9"-4.7"	4.7	120	4.9	125	14.9
12 992412	8" STAINLESS trench drain H5.1"-4.9"	4.9	125	5.1	130	15.3
13 992413	8" STAINLESS trench drain H5.3"-5.1"	5.1	130	5.3	135	15.7
14 992414	8" STAINLESS trench drain H5.5"-5.3"	5.3	135	5.5	140	15.9
15 992415	8" STAINLESS trench drain H5.7"-5.5"	5.5	140	5.7	145	16.1

NEUTRAL

Article	Name	H, in	H, mm	W, lbs
1 992421	8" STAINLESS trench drain H3.0"	3.0	75	12.3
2 992422	8" STAINLESS trench drain H3.1"	3.1	80	12.4
3 992423	8" STAINLESS trench drain H3.3"	3.3	85	12.6
4 992424	8" STAINLESS trench drain H3.5"	3.5	90	13.0
5 992425	8" STAINLESS trench drain H3.7"	3.7	95	13.4
6 992426	8" STAINLESS trench drain H3.9"	3.9	100	13.6
7 992427	8" STAINLESS trench drain H4.1"	4.1	105	13.7
8 992428	8" STAINLESS trench drain H4.3"	4.3	110	14.1
9 992429	8" STAINLESS trench drain H4.5"	4.5	115	14.6
10 992430	8" STAINLESS trench drain H4.7"	4.7	120	14.7
11 992431	8" STAINLESS trench drain H4.9"	4.9	125	14.9
12 992432	8" STAINLESS trench drain H5.1"	5.1	130	15.3
13 992433	8" STAINLESS trench drain H5.3"	5.3	135	15.7
14 992434	8" STAINLESS trench drain H5.5"	5.5	140	15.9
15 992435	8" STAINLESS trench drain H5.7"	5.7	145	16.1



8" Corner element

Article	Name	H, in	H, mm	W, lbs
1 992441	8" STAINLESS trench drain (corner element)	3.0	75	9.9
2 992442		3.1	80	10.0
3 992443		3.3	85	10.1
4 992444		3.5	90	10.7
5 992445		3.7	95	10.8
6 992446		3.9	100	10.9
7 992447		4.1	105	11.0
8 992448		4.3	110	11.6
9 992449		4.5	115	11.7
10 992450		4.7	120	11.8
11 992451		4.9	125	11.9
12 992452		5.1	130	12.5
13 992453		5.3	135	12.7
14 992454		5.5	140	12.7
15 992455		5.7	145	12.8

8" T-element

Article	Name	H, in	H, mm	W, lbs
1 992461	8" STAINLESS trench drain (T-element)	3.0	75	10.4
2 992462		3.1	80	10.4
3 992462		3.3	85	10.4
4 992463		3.5	90	11.2
5 992463		3.7	95	11.2
6 992464		3.9	100	11.3
7 992464		4.1	105	11.3
8 992465		4.3	110	12.1
9 992465		4.5	115	12.1
10 992466		4.7	120	12.2
11 992466		4.9	125	12.2
12 992467		5.1	130	13.0
13 992467		5.3	135	13.0
14 992468		5.5	140	13.0
15 992468		5.7	145	13.1

8" End Cap

Article	Name	For Channel Height, in
992501	Type A	4.6
992502	Type B	5.4
992503	Type C	6.2
992504	Type D	6.6

8" Transition Flange

Article	Name	For Channel Height, in
992507	Type A	3.3
992508	Type B	4.1
992509	Type C	4.9

8" End Cap with vertical outlet 4"

Article	Name	For Channel Height, in
992520	Type A	3.3
992521	Type B	4.1
992522	Type C	4.9
992523	Type D	5.7

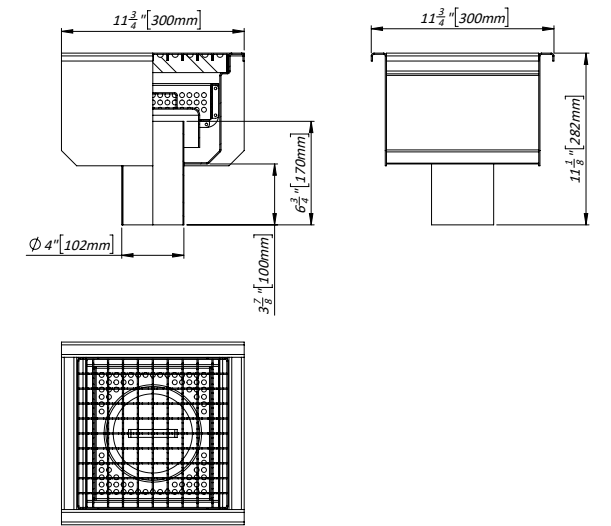
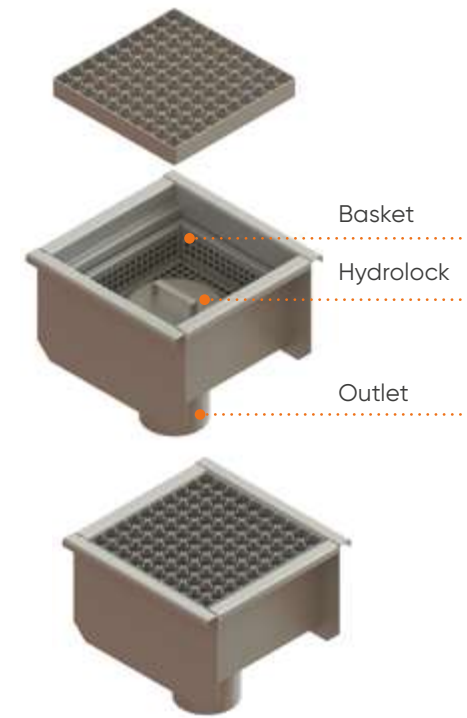
8" End Cap with vertical outlet 6"

Article	Name	For Channel Height, in
992530	Type A	3.3
992531	Type B	4.1
992532	Type C	4.9
992533	Type D	5.7

8" End Cap with horizontal outlet 4"

Article	Name	For Channel Height, in
992540	Type A	3.6
992541	Type B	4.1
992542	Type C	4.9
992543	Type D	5.7

12"x12" STAINLESS trap



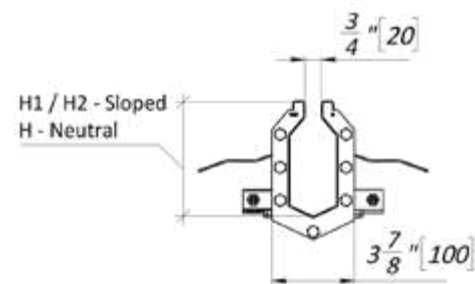
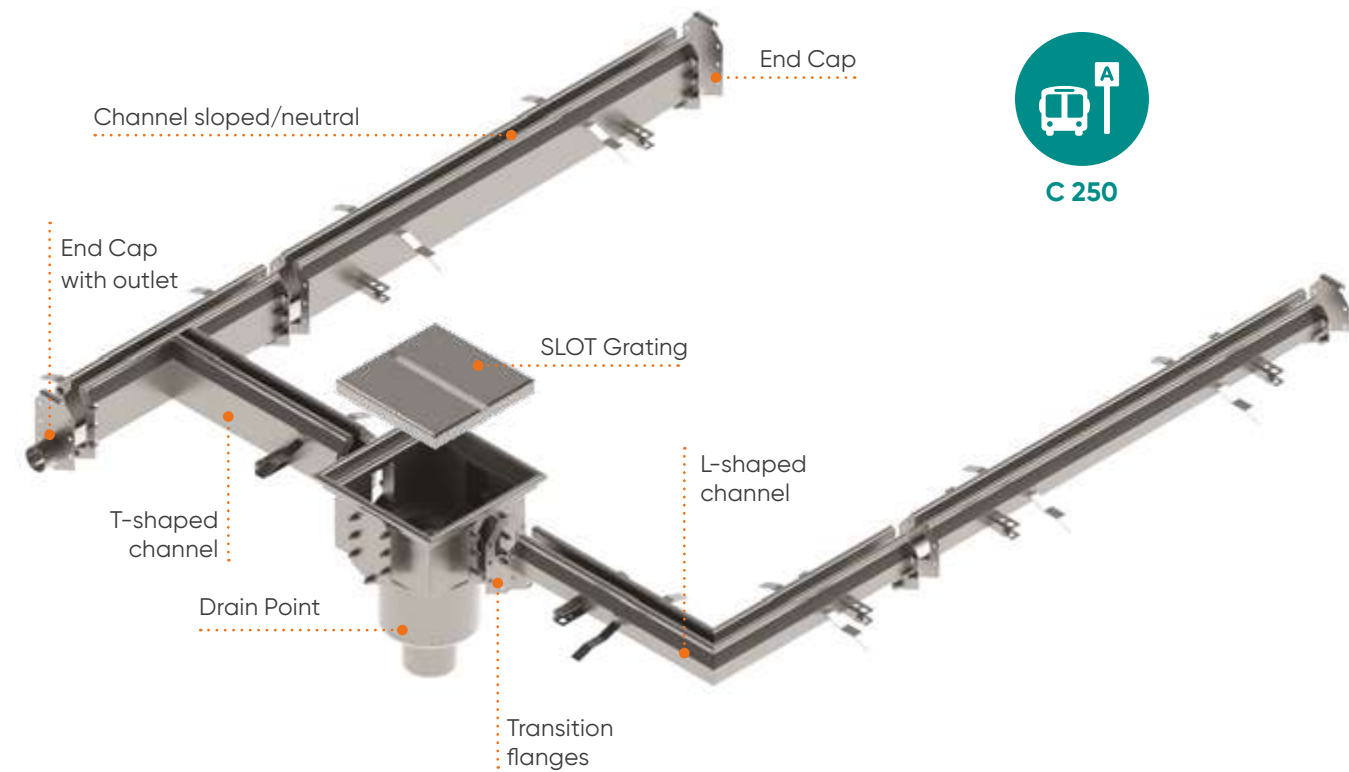
Article	Name	H, in	W, lb
529.102.11	12"x12" STAINLESS trap	11.1	18.3
992393	12"x12" STAINLESS trap	11.8	23.0



# STAINLESS slot drain system

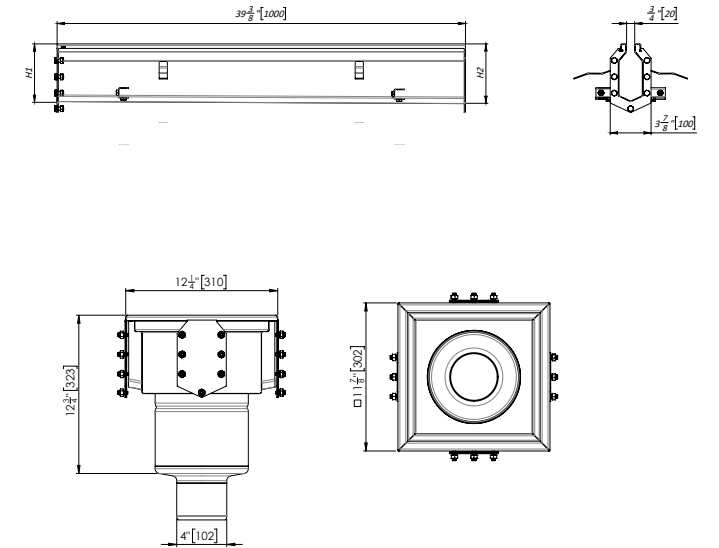
STAINLESS slot drain is the modular channel drain (with 2" wide interior) that has a functional and esthetical design for installation into concrete floors, making it a practical solution. With its grate-free design of the channel drain and despite the narrow slot, it is easy to clean and maintain.

Used anywhere, where hygiene and corrosion protection are important: Pharmaceutical industries, Laboratories, Chemical industries, Professional kitchens, Food processing facilities, Brewing, Warehouses, Restaurants, Hospitals, schools, hotels



**Flange gasket**  
It is possible to use gaskets instead of liquid sealant to improve the waterproofing and facilitate installation.

## 4" STAINLESS slot drain system



### PRE SLOPED

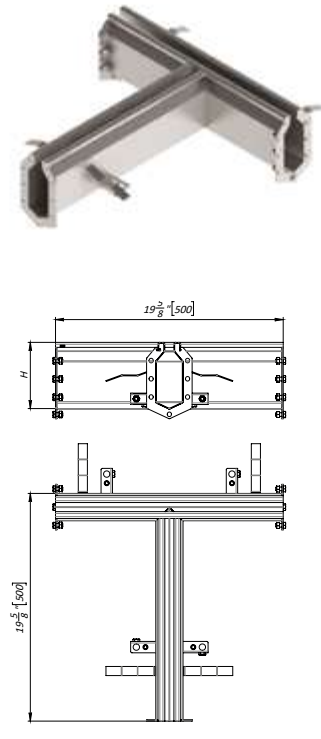
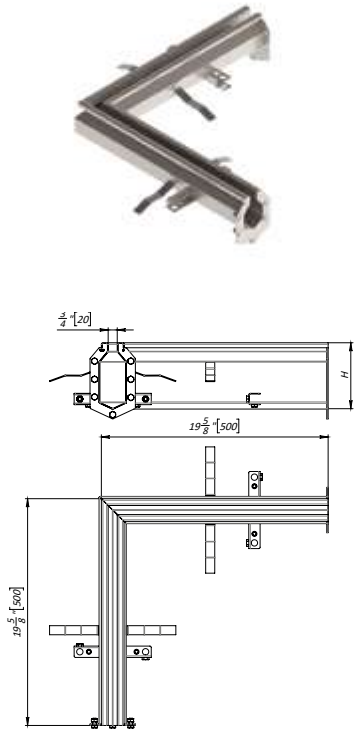
Article	Name	H1, in	H2, in	W, lb	
1	992001	4" Channel sloped 01	2.8	3.0	7.8
2	992002	4" Channel sloped 02	3.0	3.1	8.0
3	992003	4" Channel sloped 03	3.1	3.3	8.3
4	992004	4" Channel sloped 04	3.3	3.5	8.6
5	992005	4" Channel sloped 05	3.5	3.7	8.9
6	992006	4" Channel sloped 06	3.7	3.9	9.2
7	992007	4" Channel sloped 07	3.9	4.1	9.5
8	992008	4" Channel sloped 08	4.1	4.3	9.8
9	992009	4" Channel sloped 09	4.3	4.5	10.1
10	992010	4" Channel sloped 10	4.5	4.7	10.4
11	992011	4" Channel sloped 11	4.7	4.9	10.6
12	992012	4" Channel sloped 12	4.9	5.1	10.9
13	992013	4" Channel sloped 13	5.1	5.3	11.3
14	992014	4" Channel sloped 14	5.3	5.5	11.5
15	992015	4" Channel sloped 15	5.5	5.7	11.7

### NEUTRAL

Article	Name	H, in	W, lb	
1	992021	4" Channel neutral 01	3.0	7.9
2	992022	4" Channel neutral 02	3.1	8.1
3	992023	4" Channel neutral 03	3.3	8.4
4	992024	4" Channel neutral 04	3.5	8.8
5	992025	4" Channel neutral 05	3.7	9.0
6	992026	4" Channel neutral 06	3.9	9.3
7	992027	4" Channel neutral 07	4.1	9.5
8	992028	4" Channel neutral 08	4.3	10.0
9	992029	4" Channel neutral 09	4.5	10.3
10	992030	4" Channel neutral 10	4.7	10.5
11	992031	4" Channel neutral 11	4.9	10.7
12	992032	4" Channel neutral 12	5.1	11.2
13	992033	4" Channel neutral 13	5.3	11.4
14	992034	4" Channel neutral 14	5.5	11.6
15	992035	4" Channel neutral 15	5.7	11.9

### 4" Drain Point

Article	Name	H, in	W, lb
992193	Drain Point 12"x12" with vertical outlet 4"	16.5	15.7



**4" L-shaped channel**

Article	Name	H, in	W, lbs	
1	992041	4" L-shaped channel 01	3.0	7.6
2	992042	4" L-shaped channel 02	3.2	7.8
3	992043	4" L-shaped channel 03	3.4	8.1
4	992044	4" L-shaped channel 04	3.5	8.5
5	992045	4" L-shaped channel 05	3.7	8.7
6	992046	4" L-shaped channel 06	3.9	8.9
7	992047	4" L-shaped channel 07	4.1	9.1
8	992048	4" L-shaped channel 08	4.3	9.6
9	992049	4" L-shaped channel 09	4.5	9.8
10	992050	4" L-shaped channel 10	4.7	10.1
11	992051	4" L-shaped channel 11	4.9	10.3
12	992052	4" L-shaped channel 12	5.1	10.7
13	992053	4" L-shaped channel 13	5.3	10.9
14	992054	4" L-shaped channel 14	5.5	11.2
15	992055	4" L-shaped channel 15	5.7	11.4

**4" T-shaped channel**

Article	Name	H, in	W, lbs	
1	992061	4" T-shaped channel 01	3.0	8.1
2	992062	4" T-shaped channel 02	3.2	8.2
3	992063	4" T-shaped channel 03	3.4	8.4
4	992064	4" T-shaped channel 04	3.5	8.9
5	992065	4" T-shaped channel 05	3.7	9.1
6	992066	4" T-shaped channel 06	3.9	9.3
7	992067	4" T-shaped channel 07	4.1	9.5
8	992068	4" T-shaped channel 08	4.3	10.1
9	992069	4" T-shaped channel 09	4.5	10.3
10	992070	4" T-shaped channel 10	4.7	10.5
11	992071	4" T-shaped channel 11	4.9	10.7
12	992072	4" T-shaped channel 12	5.1	11.2
13	992073	4" T-shaped channel 13	5.3	11.4
14	992074	4" T-shaped channel 14	5.5	11.6
15	992075	4" T-shaped channel 15	5.7	11.7

**4" End Cap**

Article	Name	For Channel Height, in
992101	Type A	3.0 - 3.4
992102	Type B	3.5 - 4.1
992103	Type C	4.3 - 4.9
992104	Type D	5.1 - 5.7

**4" Transition Flange**

Article	Name	For Channel Height, in
992107	Type A	3.0 - 3.4
992108	Type B	3.5 - 4.1
992109	Type C	4.3 - 4.9

**4" End Cap with horizontal outlet 2"**

Article	Name	For Channel Height, in
992120	Type A	3.0 - 3.4
992121	Type B	3.5 - 4.1
992122	Type C	4.3 - 4.9
992123	Type D	5.1 - 5.7







Vodaland Canada Inc.  
5900 Ambler Drive, Unit 1 & 2, Mississauga, ON L4W 2N3  
+1 (905) 238 1771

[VODALAND.CA](http://VODALAND.CA)

